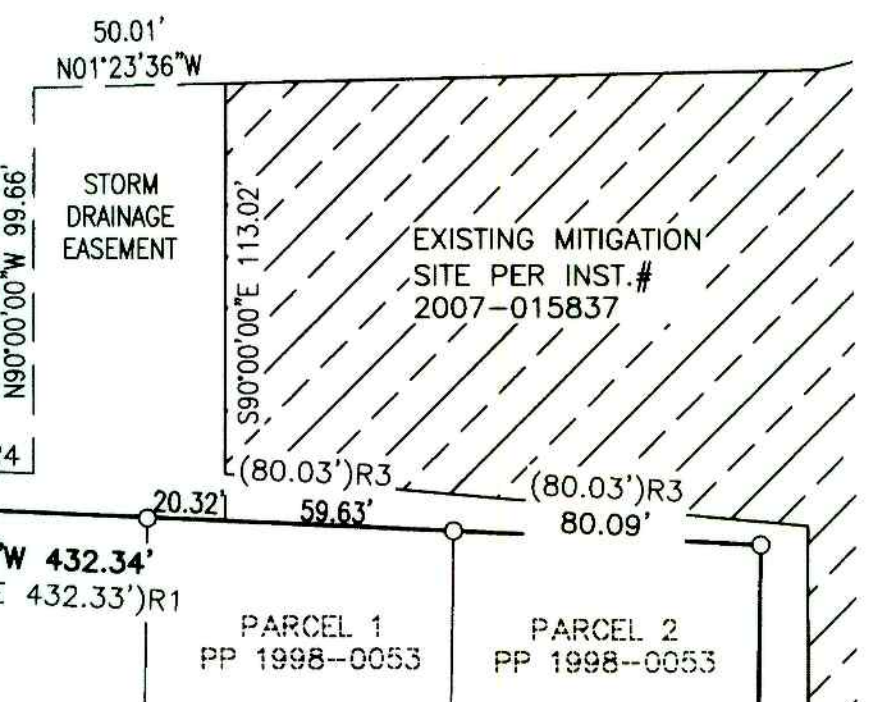


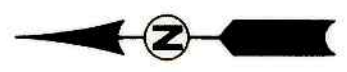
LEGEND:
 ● SET 5/8" x 30" IRON ROD w/CAP MARKED "I.E. ENGINEERING" UNLESS OTHERWISE NOTED
 ○ FOUND 5/8" IRON ROD UNLESS OTHERWISE NOTED
 △ CALCULATED POSITION
 () R1 RECORD AS PER PP 2001-0063
 () R2 RECORD AS PER M141-22
 () R3 RECORD AS PER PP 1998-0053
 () R4 RECORD AS PER PP 2002-0031
 () R5 RECORD AS PER PP 1997-0034
 () R6 RECORD AS PER PP 1996-0096
 () R7 RECORD AS PER PP 1996-0002

TRACT A
329,441 SQFT±

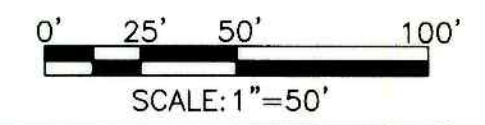


CURVE	CHORD BEARING	CHORD LENGTH	RADIUS	CURVE LENGTH	DELTA
C3	S45°58'30"W	35.36'	25.00'	39.27'	90°00'00"
C4	S44°01'30"E	35.36'	25.00'	39.27'	90°00'00"
C5	S16°24'23"W	10.38'	19.50'	10.50'	30°51'47"
C6	N04°39'32"E	37.91'	41.50'	39.37'	54°21'28"
C7	N43°13'46"W	29.35'	41.50'	30.00'	41°25'07"
C8	S88°05'12"W	38.93'	41.50'	40.52'	55°56'58"
C9	N75°32'36"E	10.38'	19.50'	10.50'	30°51'47"
C10	S61°57'07"E	18.21'	20.00'	18.90'	54°08'48"
C11	N61°57'07"W	45.51'	50.00'	47.25'	54°08'48"
C12	S68°14'50"W	38.64'	50.00'	39.67'	45°27'19"
C13	S23°38'59"W	37.25'	50.00'	38.17'	43°44'23"
C14	S19°45'53"E	36.72'	50.00'	37.60'	43°05'19"
C15	S61°43'15"E	34.88'	50.00'	35.63'	40°49'27"
C16	N67°20'52"E	50.78'	50.00'	53.27'	61°02'19"
C17	S63°54'06"W	18.21'	20.00'	18.90'	54°08'48"
C18	N44°01'30"W	27.58'	19.50'	30.63'	90°00'00"
C19	S59°34'47"E	9.83'	10.00'	10.28'	58°53'28"
C20	N65°23'52"W	50.78'	50.00'	53.27'	61°02'19"
C21	S66°53'39"W	29.55'	50.00'	30.00'	34°22'39"
C22	S30°41'55"W	32.57'	50.00'	33.17'	38°00'48"
C23	S40°57'39"E	79.50'	50.00'	91.90'	05°18'21"
C24	N59°14'06"E	45.63'	50.00'	47.39'	54°18'09"
C25	S61°31'46"W	9.83'	10.00'	10.28'	58°53'28"
C26	N45°58'30"E	35.36'	25.00'	39.27'	90°00'00"
C27	S84°36'29"E	26.19'	170.00'	26.21'	8°50'04"
C28	S73°21'33"E	40.44'	170.00'	40.54'	13°39'48"
C29	N69°18'53"W	22.37'	230.00'	22.38'	5°34'29"
* C20	N63°01'32"W	54.41'		57.41'	65°46'59"

LINE	BEARING	LENGTH
L1	S88°56'57"E	3.39'
L2	S11°06'27"E	63.99'
L3	S77°13'46"W	24.85'
L4	S19°55'50"E	30.02'
L5	S04°15'53"E	24.02'
L6	S05°26'45"W	44.23'
L7	N81°55'28"E	22.53'
L8	S17°54'06"E	28.88'



CURVE	CHORD BEARING	CHORD LENGTH	RADIUS	CURVE LENGTH	DELTA
C30	N80°29'46"W	67.15'	230.00'	67.39'	16°47'17"
C31	N79°06'05"W	57.81'	170.00'	58.09'	19°34'43"
C32	N67°55'11"W	8.26'	170.00'	8.26'	2°47'05"
C33	S73°45'50"E	57.94'	230.00'	58.10'	14°28'22"
C34	S85°00'46"E	32.19'	230.00'	32.21'	8°01'29"
C35	N44°01'30"W	35.36'	25.00'	39.27'	90°00'00"
C36	N77°42'41"W	77.58'	200.00'	78.08'	22°22'04"
C37	S77°46'35"E	78.03'	200.00'	78.53'	22°29'52"
C38	N44°01'30"W	57.28'	40.50'	63.62'	90°00'00"
C39	N45°58'30"E	25.74'	18.20'	28.59'	90°00'00"
C40	S44°01'30"E	25.74'	18.20'	28.59'	90°00'00"



S01°01'51"W 60.02'
(N01°05'05"E 60.00')R1
BROCKWAY-LOOKINGGLASS ROAD
 COUNTY ROAD NO. 47
 (R/W VARIES)

*AFFIDAVIT OF CORRECTION
 RECORDED JUNE 24, 2009
 AS CO. CLERK INSTRUMENT
 No. 2009-011535
 CS. FILE 65/68-5

REGISTERED PROFESSIONAL LAND SURVEYOR

OREGON
 JULY 14, 1978
RONALD A. GUMMY
 1954
 EXPIRES: 12/31/2008

CREEKSIDE MEADOWS SUBDIVISION PHASE 1
 LYING IN THE NW 1/4 AND THE SW 1/4 OF SECTION 20, T 28 S, R 6 W, WILLAMETTE MERIDIAN, DOUGLAS COUNTY, OREGON

SURVEYED FOR:
 CRAIG KOCH
 2278 W 29TH AVENUE
 EUGENE, OR 97405

SURVEYED BY:

 505 SE Main Street
 Roseburg, Oregon 97470
 PHONE (541) 673-0166
 FAX (541) 440-9392
 email@ieengineering.com

JOB NO: 2076-01
 DATE: OCT., 2007
 DWG. BY: RNP
 PM: EDR
 SCALE: AS SHOWN
 PAGE: 2 OF 3