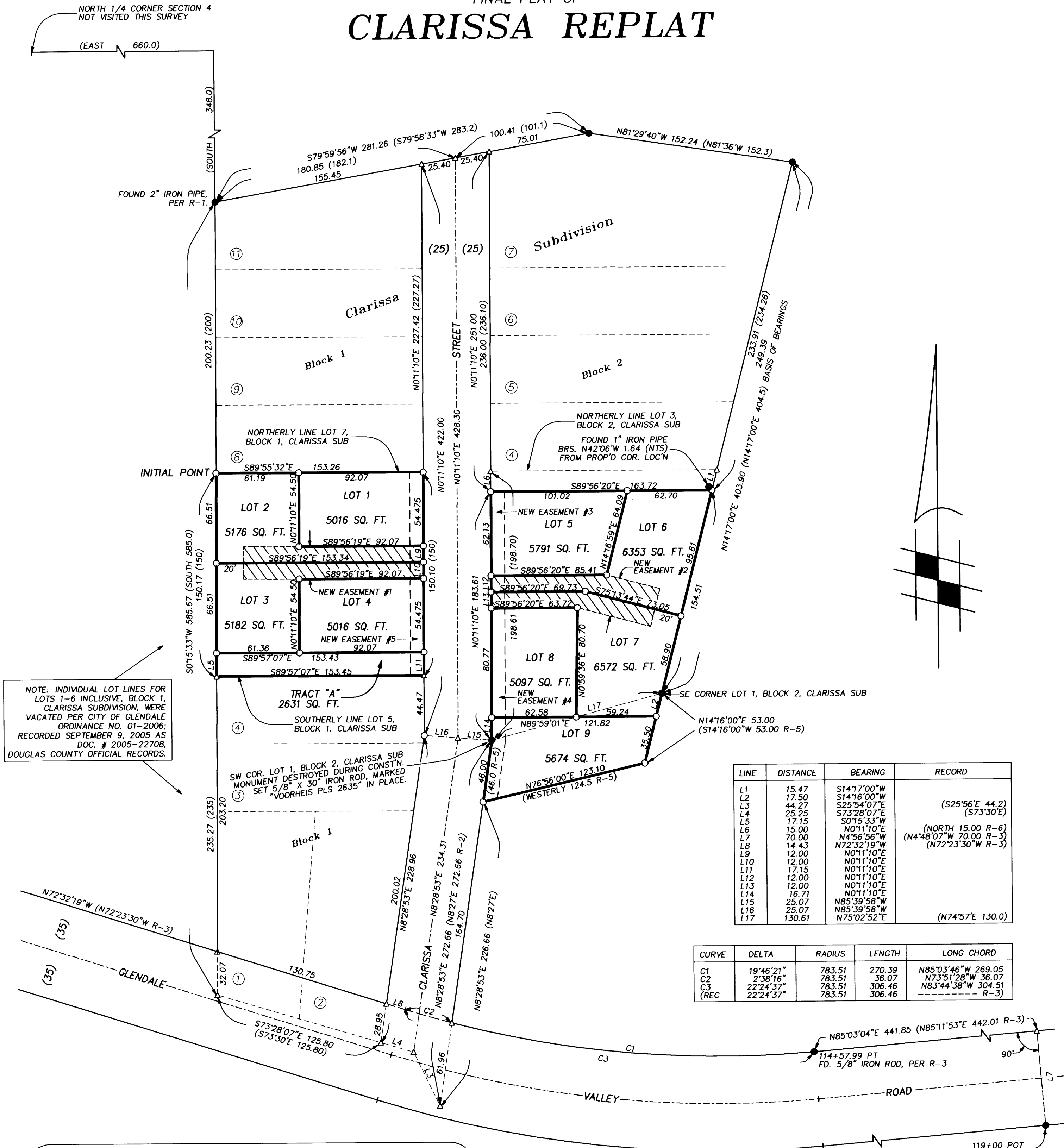


FINAL PLAT OF CLARISSA REPLAT



NOTE: INDIVIDUAL LOT LINES FOR LOTS 1-6 INCLUSIVE, BLOCK 1, CLARISSA SUBDIVISION, WERE VACATED PER CITY OF GLENDALE ORDINANCE NO. 01-2006, RECORDED SEPTEMBER 9, 2005 AS DOC. # 2005-22708, DOUGLAS COUNTY OFFICIAL RECORDS.

LINE	DISTANCE	BEARING	RECORD
L1	15.47	S14°17'00"W	
L2	17.50	S14°16'00"W	
L3	44.27	S25°54'07"E	(S25°56'E 44.2)
L4	25.25	S73°28'07"E	(S73°30'E)
L5	17.15	S07°53'33"W	
L6	15.00	N0°11'10"E	(NORTH 15.00 R-6)
L7	70.00	N4°56'56"W	(N4°48'07"W 70.00 R-3)
L8	14.43	N72°32'19"W	(N72°23'30"W R-3)
L9	12.00	N0°11'10"E	
L10	12.00	N0°11'10"E	
L11	17.15	N0°11'10"E	
L12	12.00	N0°11'10"E	
L13	12.00	N0°11'10"E	
L14	16.71	N0°11'10"E	
L15	25.07	N85°39'58"W	
L16	25.07	N85°39'58"W	
L17	130.61	N75°02'52"E	(N74°57'E 130.0)

CURVE	DELTA	RADIUS	LENGTH	LONG CHORD
C1	19°46'21"	783.51	270.39	N85°03'46"W 269.05
C2	2°38'16"	783.51	36.07	N73°51'28"W 36.07
C3	22°24'37"	783.51	306.46	N83°44'38"W 304.51
(REC)	22°24'37"	783.51	306.46	----- R-3

LEGEND

- = SET 5/8" X 30" IRON ROD, WITH YELLOW PLASTIC CAP MARKED "VOORHEIS, PLS 2635", UNLESS NOTED OTHERWISE.
- = FOUND 1" IRON PIPE, PER PLAT OF CLARISSA SUBDIVISION (VOL. 8, PAGE 18), UNLESS NOTED OTHERWISE.
- Δ, — = CALCULATED POSITION ONLY, NOTHING FOUND OR SET.

BASIS OF BEARINGS: THE EASTERLY LINE OF BLOCK 2, CLARISSA SUBDIVISION, SHOWN AS N14°17'00"E, PER PLAT OF CLARISSA SUBDIVISION (VOL. 8, PAGE 18)

() = RECORD INFORMATION PER PLAT OF CLARISSA SUBDIVISION (VOL. 8, PAGE 18), UNLESS NOTED OTHERWISE.

PT = POINT OF TANGENCY POT = POINT ON TANGENT NTS = NOT TO SCALE

④ = LOT NUMBER PER CLARISSA SUBDIVISION PLAT (VOL. 8, PAGE 18)

REFERENCES

- R-1 = PLAT OF CLARISSA SUBDIVISION (VOL. 8, PAGE 18)
- R-2 = SURVEY M35-57
- R-3 = DOUGLAS CO. ROAD DEPT. PLANS FOR GLENDALE VALLEY ROAD #313 (AUG. 1969 SHT. 7)
- R-4 = DOCUMENT NO. 99-12920, DOUGLAS COUNTY DEED RECORDS
- R-5 = DOCUMENT NO. 2000-10736, DOUGLAS COUNTY DEED RECORDS
- R-6 = DOCUMENT NO. 2000-25401, DOUGLAS COUNTY DEED RECORDS
- R-7 = DOCUMENT NO. 2004-28478, DOUGLAS COUNTY DEED RECORDS
- R-8 = DOCUMENT NO. 2005-22708, DOUGLAS COUNTY DEED RECORDS

NEW EASEMENTS

- 1) A 24 FOOT RECIPROCAL ACCESS EASEMENT, TO BENEFIT LOTS 2 & 3, CREATED ON THIS PLAT. (SHOWN AS "HATCHED AREA")
- 2) A 24 FOOT RECIPROCAL ACCESS EASEMENT, TO BENEFIT LOTS 6 & 7, CREATED ON THIS PLAT. (SHOWN AS "HATCHED AREA")
- 3) 10 FOOT SEWER EASEMENT, CREATED ON THIS PLAT.
- 4) 10 FOOT PUBLIC UTILITY EASEMENT, DEDICATED ON THIS PLAT.
- 5) 10 FOOT PUBLIC UTILITY EASEMENT, DEDICATED ON THIS PLAT.

REGISTERED PROFESSIONAL LAND SURVEYOR
John J. Voorheis
 OREGON
 JULY 28, 1993
 JOHN J. VOORHEIS
 2635
 LICENSE RENEWAL DATE: JUNE 30, 2008

VOORHEIS LAND SURVEYING, John J. Voorheis, PLS 2635
 3388-B Merlin Road # 113, Grants Pass, Oregon (541) 476-0801

FINAL PLAT OF
CLARISSA REPLAT
 A REPLAT OF PORTIONS OF BLOCKS 1 & 2 OF CLARISSA SUBDIVISION, TOGETHER WITH THAT TRACT OF LAND DESCRIBED IN DOCUMENT NO. 2000-10736, DOUGLAS COUNTY DEED RECORDS, SITUATED IN THE NE 1/4 OF SECTION 4, TOWNSHIP 33 SOUTH, RANGE 6 WEST, W.M., DOUGLAS COUNTY, OREGON
 SURVEY FOR: Woodruff Construction & Design DATE: April 16, 2008
 Post Office Box 1057
 Grants Pass, Oregon 97528 SCALE 1" = 50'