

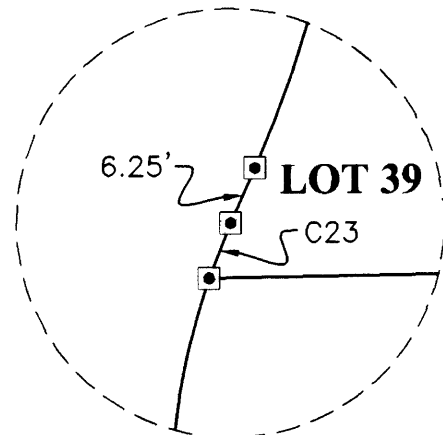
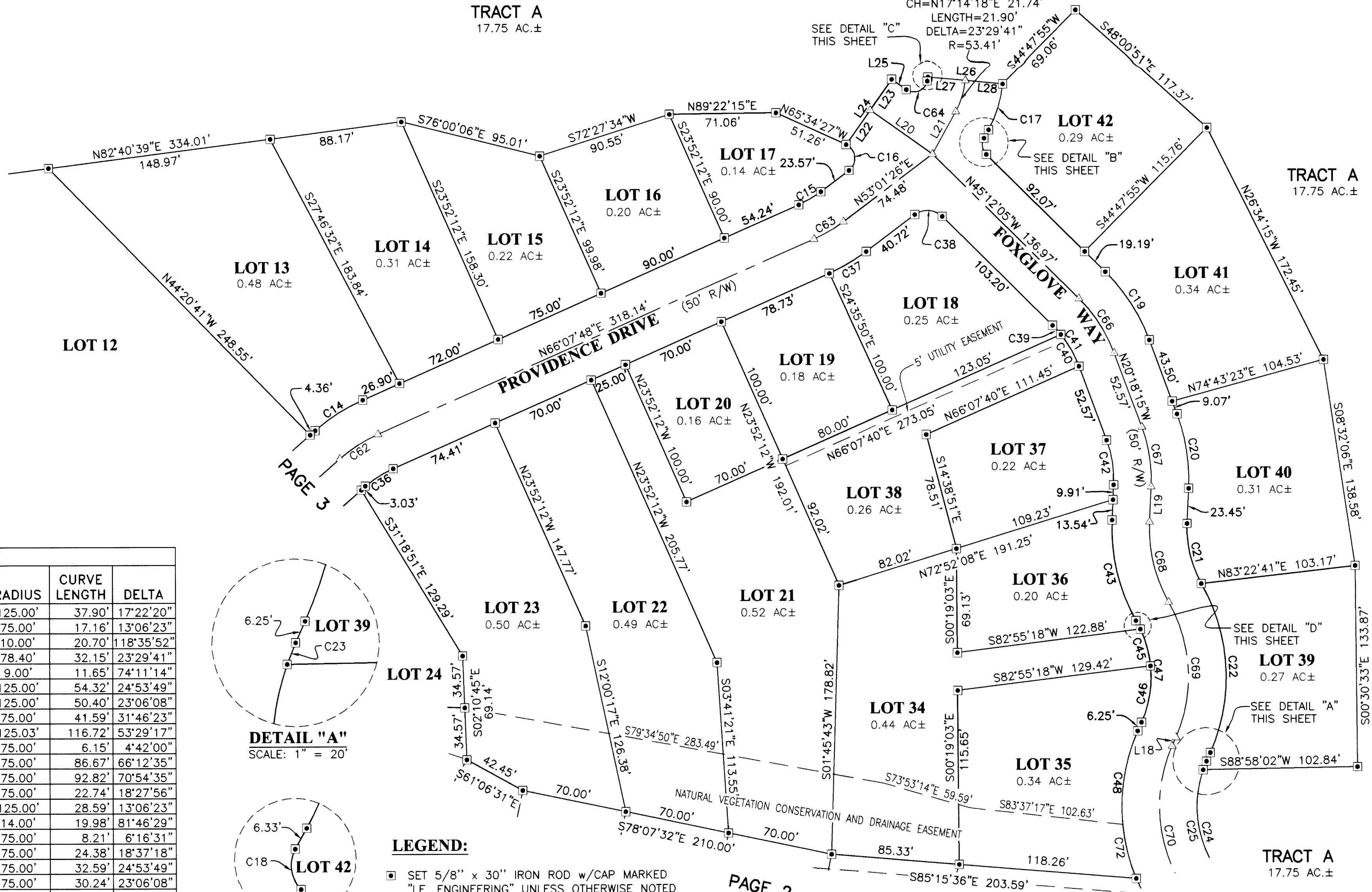
TRACT A
17.75 AC±

TRACT A
17.75 AC±

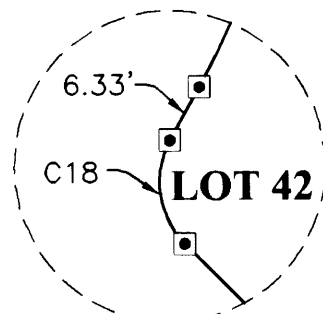
TRACT A
17.75 AC±

LINE TABLE		
LINE	BEARING	LENGTH
L18	N23°52'35"E	6.25'
L19	N02°47'53"E	23.45'
L20	N54°49'13"W	50.78'
L21	N28°59'09"E	32.04'
L22	N35°10'47"E	27.92'
L23	N35°10'47"E	25.00'
L24	N35°10'47"E	52.92'
L25	N54°49'13"W	11.95'
L26	N84°30'32"W	50.00'
L27	S84°30'32"E	25.00'
L28	S84°30'32"E	25.00'

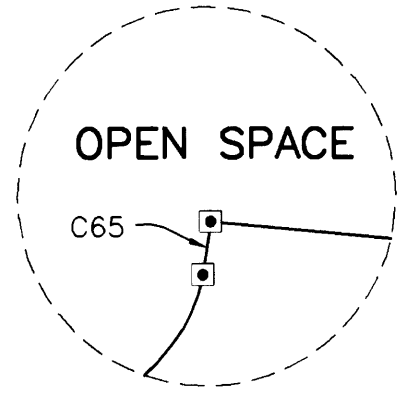
CURVE TABLE					
CURVE	CHORD BEARING	CHORD LENGTH	RADIUS	CURVE LENGTH	DELTA
C14	S57°26'30"W	37.76'	125.00'	37.90'	17°22'20"
C15	N59°34'37"E	17.12'	75.00'	17.16'	13°06'23"
C16	N06°16'30"W	17.20'	10.00'	20.70'	118°35'52"
C17	N17°14'18"E	31.92'	78.40'	32.15'	23°29'41"
C18	S08°06'28"E	10.86'	9.00'	11.65'	74°11'14"
C19	N32°45'10"W	53.89'	125.00'	54.32'	24°53'49"
C20	N08°45'11"W	50.06'	125.00'	50.40'	23°06'08"
C21	S13°05'19"E	41.06'	75.00'	41.59'	31°46'23"
C22	N02°52'17"W	112.53'	125.03'	116.72'	53°29'17"
C23	S21°31'35"W	6.15'	75.00'	6.15'	4°42'00"
C24	S13°55'43"E	81.93'	75.00'	86.67'	66°12'35"
C25	S11°34'42"E	87.01'	75.00'	92.82'	70°54'35"
C36	S57°26'38"W	22.65'	75.00'	22.74'	18°27'56"
C37	N59°34'37"E	28.53'	125.00'	28.59'	13°06'23"
C38	N86°05'19"W	18.33'	14.00'	19.98'	81°46'29"
C39	N42°03'49"W	8.21'	75.00'	8.21'	6°16'31"
C40	N29°36'54"W	24.27'	75.00'	24.38'	18°37'18"
C41	N32°45'10"W	32.33'	75.00'	32.59'	24°53'49"
C42	N08°45'11"W	30.04'	75.00'	30.24'	23°06'08"
C43	S13°10'07"E	68.77'	125.00'	69.67'	31°55'59"
C44	N27°19'58"W	6.39'	75.03'	6.40'	4°53'06"
C45	N15°12'06"W	25.25'	75.03'	25.37'	19°22'38"
C46	N09°10'47"E	38.06'	75.03'	38.48'	29°23'09"
C47	N02°57'05"W	67.71'	75.03'	70.25'	53°38'53"
C48	S09°16'30"W	63.02'	125.00'	63.71'	29°12'11"
C49	S34°40'47"E	53.49'	125.00'	53.90'	24°42'25"
C62	S57°26'38"W	30.20'	100.00'	30.32'	17°22'20"
C63	N59°34'37"E	22.82'	100.00'	22.87'	13°06'23"
C64	N68°08'39"E	15.10'	9.00'	17.92'	114°04'15"
C65	N08°18'00"E	2.78'	28.40'	2.78'	5°37'04"
C66	N32°45'10"W	43.11'	100.00'	43.45'	24°53'49"
C67	N08°45'11"W	40.05'	100.00'	40.32'	23°06'08"
C68	S13°08'01"E	54.90'	100.00'	55.61'	31°51'48"
C69	N02°54'23"W	90.13'	100.03'	93.50'	53°33'28"
C70	S11°34'42"E	116.01'	100.00'	123.76'	70°54'35"
C71	N07°18'48"W	127.81'	100.00'	138.65'	79°26'25"
C72	S13°49'59"E	36.92'	125.00'	37.06'	16°59'59"



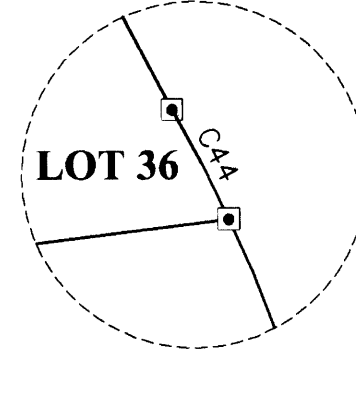
DETAIL "A"
SCALE: 1" = 20'



DETAIL "B"
SCALE: 1" = 20'



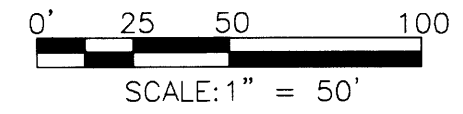
DETAIL "C"
SCALE: 1" = 10'



DETAIL "D"
SCALE: 1" = 10'

LEGEND:

- SET 5/8" x 30" IRON ROD w/CAP MARKED "I.E. ENGINEERING" UNLESS OTHERWISE NOTED
- FOUND ALUMINUM CAP AS NOTED
- FOUND 5/8" IRON ROD UNLESS OTHERWISE NOTED
- △ CALCULATED POSITION
- Ⓜ RECORD AS PER M152-47



PAGE 2

<p>REGISTERED PROFESSIONAL LAND SURVEYOR</p> <p>OREGON JULY 14, 1978 RONALD A. QUIMBY 1654</p> <p>EXPIRES: 12/31/2008</p>	<p>PROVIDENCE SUBDIVISION</p> <p>LYING IN THE SW 1/4 OF SEC. 33, T21S, R12W AND THE NW 1/4 OF SEC. 4, T22S, R12W, W.M., DOUGLAS COUNTY, OREGON</p>	
	<p>SURVEYED FOR: PROVIDENCE PROPERTIES, INC. 120 N. 7TH REEDSPORT, OR. 97467</p>	<p>SURVEYED BY: i.e. ENGINEERING 505 SE Main Street Roseburg, Oregon 97470 PHONE (541) 673-0166 FAX (541) 440-9392 iemail@ieengineering.com</p>
<p>SCALE: 1" = 50'</p>	<p>JOB NO: 1831-01 DATE: JULY, 2007</p>	<p>DWG. BY: DAF PM: DAF PAGE: 4 OF 5</p>