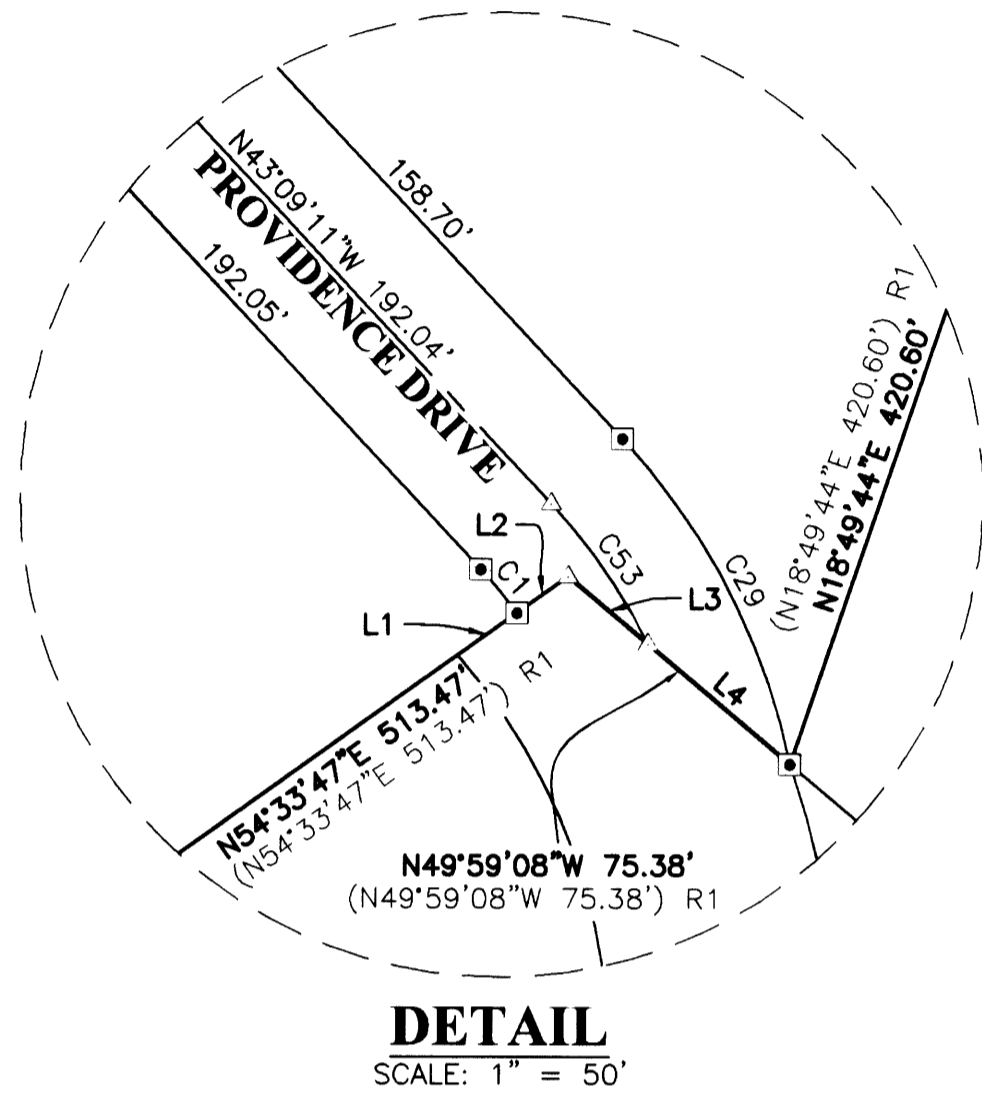


# PROVIDENCE SUBDIVISION

VOL. 22 PAGE 51A

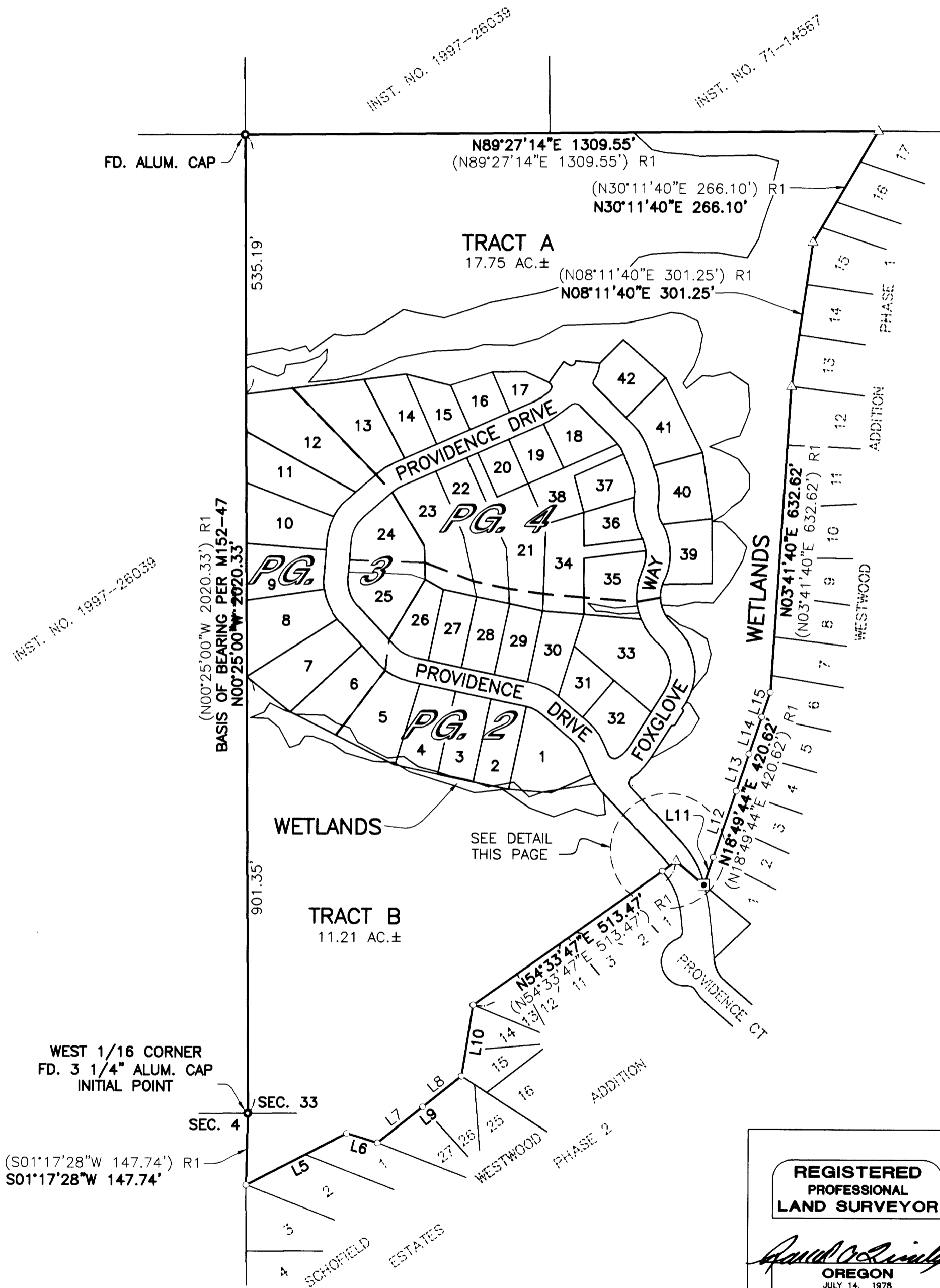


**NOTE:**

1. WETLAND AREAS AND NATURAL VEGETATION CONSERVATION EASEMENTS DEPICTED ON THIS PLAT ARE GOVERNED AND RESTRICTED BY INSTRUMENT NUMBER 2007-013448 AS RECORDED IN THE DEED RECORDS OF DOUGLAS COUNTY.
2. TRACTS A AND B ARE FOR FUTURE DEVELOPMENT.

**PAGE INDEX**

- PAGE 1 OVERALL SITE, BASIS OF BEARING, SHEET INDEX, DETAIL, LINE TABLE, CURVE TABLE
- PAGE 2 LOTS 1-5 AND 26-33, LINE TABLE, CURVE TABLE
- PAGE 3 LOTS 6-12 AND 24-25, CURVE TABLE
- PAGE 4 LOTS 13-23 AND 34-42, LINE TABLE, CURVE TABLE
- PAGE 5 NOTES, SURVEYOR CERTIFICATE, APPROVALS, DECLARATION, NARRATIVE

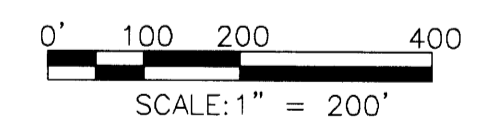
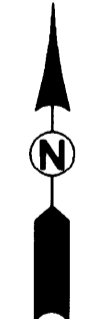


CURVE TABLE					
CURVE	CHORD BEARING	CHORD LENGTH	RADIUS	CURVE LENGTH	DELTA
C1	N39°48'06"W	14.55'	125.85'	14.55'	6°37'34"
C29	N27°25'58"W	95.06'	175.85'	96.26'	31°21'51"
C53	N34°43'48"W	44.41'	150.85'	44.57'	16°55'45"

LINE TABLE		
LINE	BEARING	LENGTH
L1	N54°33'47"E	18.85'
L2	N54°33'47"E	16.25'
L3	N49°59'08"W	27.22'
L4	N49°59'08"W	48.16'
L5	N62°45'57"E	234.10'
	(N62°45'57"E	234.10') R1
L6	S73°22'01"E	66.81'
	(S73°22'01"E	66.81') R1
L7	N51°16'25"E	119.77'
	(N51°16'25"E	119.77') R1
L8	N51°16'25"E	102.20'
	(N51°16'25"E	102.20') R1
L9	N51°16'25"E	221.97'
	(N51°16'25"E	221.97') R1
L10	S09°04'12"W	148.62'
	(S09°04'12"W	148.62') R1
L11	N18°49'44"E	60.63'
	(N18°49'44"E	60.63') R1
L12	N18°49'44"E	144.42'
	(N18°49'44"E	144.42') R1
L13	N18°49'44"E	81.08'
	(N18°49'44"E	81.08') R1
L14	N18°49'44"E	80.88'
	(N18°49'44"E	80.88') R1
L15	N18°49'44"E	53.61'
	(N18°49'44"E	53.61') R1

**LEGEND:**

- ◻ SET 5/8" x 30" IRON ROD w/CAP MARKED "I.E. ENGINEERING" UNLESS OTHERWISE NOTED
- FOUND ALUMINUM CAP AS NOTED
- FOUND 5/8" IRON ROD UNLESS OTHERWISE NOTED
- △ CALCULATED POSITION
- ( ) R1 RECORD AS PER M152-47



VOL. 22 PAGE 51A

<p><b>REGISTERED PROFESSIONAL LAND SURVEYOR</b></p> <p><i>Ronald A. Quimby</i></p> <p><b>OREGON</b> JULY 14, 1978 <b>RONALD A. QUIMBY</b> 1864</p> <p>EXPIRES: 12/31/2008</p>	<p><b>PROVIDENCE SUBDIVISION</b></p> <p>LYING IN THE SW 1/4 OF SEC. 33, T21S, R12W AND THE NW 1/4 OF SEC. 4, T22S, R12W, W.M., DOUGLAS COUNTY, OREGON</p>	
	<p>SURVEYED FOR:</p> <p>PROVIDENCE PROPERTIES, INC. 120 N. 7TH REEDSPORT, OR. 97467</p>	<p>SURVEYED BY:</p> <p><b>i.e.</b> ENGINEERING</p> <p>505 SE Main Street Roseburg, Oregon 97470 PHONE (541) 673-0166 FAX (541) 440-9392 iemail@ieengineering.com</p>
<p>SCALE: 1" = 200'</p>	<p>JOB NO: 1831-01 DATE: JULY, 2007</p>	<p>DWG. BY: DAF PM: DAF</p>