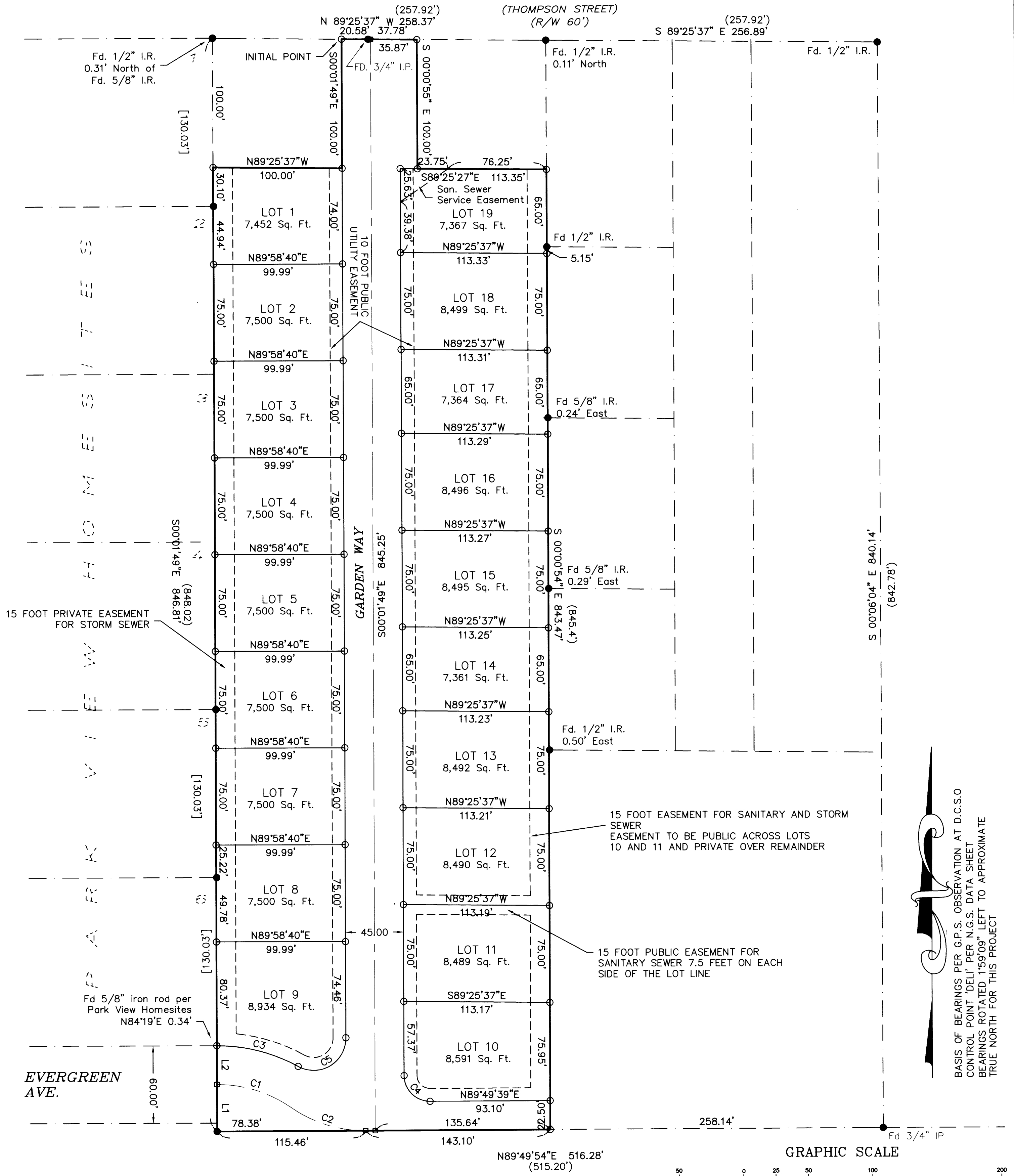
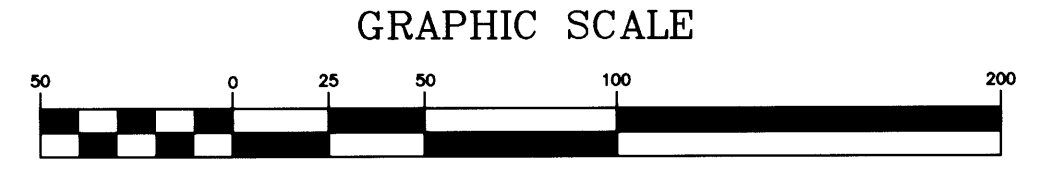


WINSTON PARK RD.
(THOMPSON STREET)
(R/W 60')



BASIS OF BEARINGS PER G.P.S. OBSERVATION AT D.C.S.O
CONTROL POINT 'DELI' PER N.G.S. DATA SHEET
BEARINGS ROTATED 1°59'09" LEFT TO APPROXIMATE
TRUE NORTH FOR THIS PROJECT



Legend

- Found 5/8" iron rod unless noted
- Set 5/8" x 30" iron rod w/ plastic cap marked "LANDMARK 2287"
- Calculated Point, No Monumentation.

Record Information

- () CS 51/219
- [] Park View Homesites Vol. 13, Page 18

LINE TABLE		
LINE	LENGTH	BEARING
L1	36.41	N00°01'49"W
L2	30.00	N00°01'49"W
L3	13.15	N03°32'41"E
L4	12.70	S01°02'54"W

CURVE TABLE			
CURVE	LENGTH	RADIUS	CHORD
C1	61.15	100.00	N72°33'48"W 60.22
C2	61.32	100.00	S72°36'29"E 60.37
C3	65.66	130.00	N75°36'16"W 64.96
C4	31.47	20.00	S45°06'05"E 28.32
C5	52.06	25.00	N59°12'33"E 43.15

Sheet 1 of 2

LEGACY ACRES
In the SW 1/4, Section 22

Township 28 South, Range 6 West, W.M.
City of Winston, Douglas County, Oregon
May 15, 2005

REGISTERED PROFESSIONAL LAND SURVEYOR
Mark A. Heimbürger
OREGON JULY 16, 1987
MARK A. HEIMBURGER 2287
RENEWS JUNE 30, 2009

FOR: Legacy Builders, Inc.
P.O. Box 1124
Winchester, OR 97495

LM LAND MARK SURVEYING, INC.

3329 N.E. STEPHENS ST.
ROSEBURG, OREGON 97470
TEL. (541) 677-9400
FAX (541) 677-9401

LM Proj. No. 2005-0053