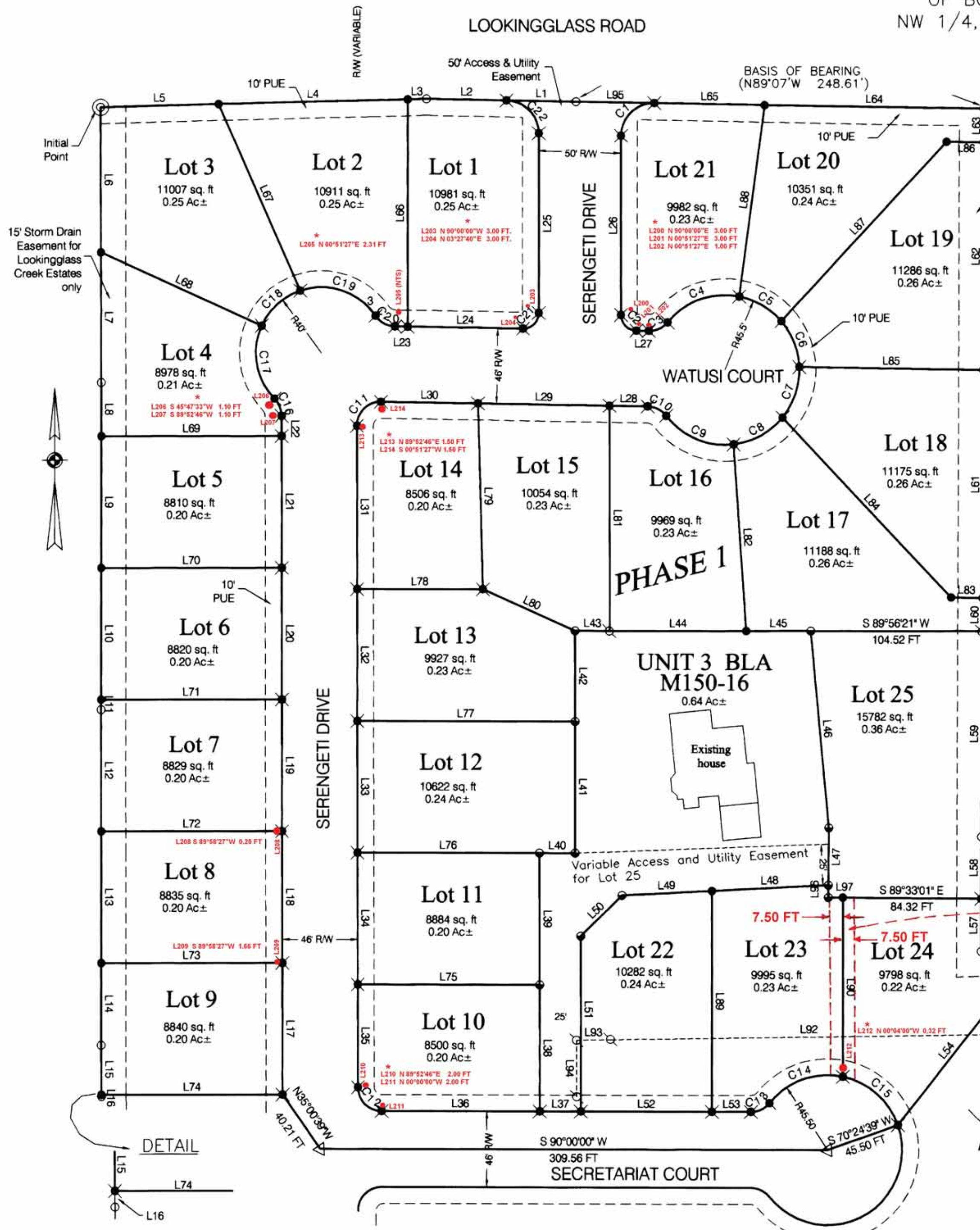


# LOOKINGGLASS CREEK ESTATES PHASE 1

UNIT 1, UNIT 2, UNIT 4 AND A PORTION OF UNIT 5  
 OF BOUNDARY LINE ADJUSTMENT M150-16  
 NW 1/4, SECTION 20, TWP 28 S, R 6 W, WM  
 WINSTON, OR 97496

MARCH 2007  
 SCALE: 1" = 50'



## M150-16 LEGEND

- ⊙ INITIAL POINT
  - FOUND 5/8" IR PER LP 1991-0009
  - FOUND 5/8" IR PER LP 2000-0060
  - FOUND 5/8" IR PER M150-16
  - SET 5/8"X30" I.R. WITH PLASTIC CAP MARKED M.E. FARR LS 1181
  - ◁ FOUND 5/8" IR PER M150-16
- PUE PUBLIC UTILITY EASEMENT  
 PVTUE PRIVATE UTILITY EASEMENT  
 ( ) = RECORD PER LP 1991-0009
- ★ DENOTES A 5/8"X30" I.R. W/PLASTIC CAP MARKED M.E. FARR 1181 TO BE SET WITHIN TIME SPECIFIED IN THE SURVEYOR'S CERTIFICATE. SET ON MARCH 2008
- \* DENOTES REFERENCE MONUMENT SET INSTEAD OF TRUE CORNER LOCATION. SEE AFFIDAVIT FILED AS INSTRUMENT 2009-011616 - C.S. FILE 65/068-8

TIE TO PROPERTY CORNERS

NO.	DIRECTION	DISTANCE
L91	S 01°03'46" E	29.77 FT
L92	S 89°07'16" W	242.74 FT
L93	S 89°07'16" W	20.61 FT
L94	S 00°02'44" E	34.28 FT

LINE TABLE					
NO.	DIRECTION	DISTANCE	NO.	DIRECTION	DISTANCE
L1	N 89°07'00" W	42.31 FT	L48	S 87°03'31" W	71.19 FT
L2	N 89°07'00" W	48.75 FT	L49	S 87°03'31" W	55.07 FT
L3	S 88°32'29" W	11.57 FT	L50	S 45°11'29" W	35.20 FT
L4	S 88°32'29" W	115.36 FT	L51	S 00°04'00" E	106.62 FT
L5	S 88°32'29" W	72.08 FT	L52	N 90°00'00" E	80.00 FT
L6	S 00°07'14" E	88.38 FT	L53	N 90°00'00" E	23.83 FT
L7	S 00°07'14" E	79.05 FT	L54	N 38°07'14" E	107.95 FT
L8	S 00°01'33" E	32.59 FT	L55	N 01°03'46" W	21.13 FT
L9	S 00°01'33" E	80.00 FT	L56	S 88°01'16" W	15.72 FT
L10	S 00°01'33" E	80.00 FT	L57	N 00°10'34" E	31.94 FT
L11	S 00°01'33" E	6.06 FT	L58	N 00°10'34" E	37.97 FT
L12	S 00°03'45" E	73.94 FT	L59	N 00°10'34" E	124.60 FT
L13	S 00°03'45" E	80.00 FT	L60	N 00°10'34" E	20.00 FT
L14	S 00°03'45" E	49.28 FT	L61	N 00°10'34" E	138.51 FT
L15	S 00°19'10" E	30.72 FT	L62	N 00°10'34" E	138.25 FT
L16	S 00°19'10" E	0.98 FT	L63	N 00°10'34" E	20.69 FT
L17	N 00°07'14" W	80.00 FT	L64	N 89°07'00" W	133.80 FT
L18	N 00°07'14" W	80.00 FT	L65	N 89°07'00" W	67.40 FT
L19	N 00°07'14" W	80.00 FT	L66	S 00°00'00" W	138.13 FT
L20	N 00°07'14" W	80.00 FT	L67	S 23°41'32" E	123.92 FT
L21	N 00°07'14" W	80.00 FT	L68	S 65°35'20" E	107.85 FT
L22	N 00°07'14" W	12.17 FT	L69	N 89°58'27" E	110.05 FT
L23	N 89°08'33" W	7.77 FT	L70	N 89°58'27" E	110.19 FT
L24	S 89°08'33" E	70.37 FT	L71	N 89°58'27" E	110.32 FT
L25	N 00°00'00" E	109.23 FT	L72	N 89°58'27" E	110.40 FT
L26	S 00°00'00" E	108.88 FT	L73	N 89°58'27" E	110.48 FT
L27	S 89°08'33" E	7.59 FT	L74	N 89°58'27" E	110.43 FT
L28	N 89°08'33" W	23.25 FT	L75	N 90°00'00" W	111.01 FT
L29	N 89°08'33" W	80.01 FT	L76	N 90°00'00" W	111.09 FT
L30	N 89°08'33" W	59.26 FT	L77	S 90°00'00" W	132.81 FT
L31	S 00°07'14" E	99.25 FT	L78	N 90°00'00" W	76.80 FT
L32	S 00°07'14" E	80.00 FT	L79	N 01°32'28" W	112.94 FT
L33	S 00°07'14" E	80.00 FT	L80	S 65°59'53" E	61.43 FT
L34	S 00°07'14" E	80.00 FT	L81	N 00°07'14" W	136.66 FT
L35	S 00°07'14" E	62.53 FT	L82	N 03°54'21" W	113.61 FT
L36	N 90°00'00" E	96.47 FT	L83	N 89°08'33" W	19.19 FT
L37	N 90°00'00" E	25.00 FT	L84	N 43°18'17" W	149.96 FT
L38	N 00°04'00" W	77.00 FT	L85	N 89°08'33" W	112.12 FT
L39	N 00°04'00" W	80.00 FT	L86	N 89°00'00" W	22.85 FT
L40	N 90°00'00" E	21.65 FT	L87	S 42°42'55" W	148.44 FT
L41	N 00°04'00" W	80.00 FT	L88	S 07°34'35" W	117.53 FT
L42	N 00°04'00" W	55.01 FT	L89	N 00°04'00" W	134.25 FT
L43	N 89°56'21" E	21.14 FT	L90	N 00°04'00" W	108.83 FT
L44	N 89°56'21" E	83.27 FT	For 91-94 see table at left		
L45	N 89°56'21" E	39.42 FT	L95	N 89°07'00" W	47.70 FT
L46	S 05°17'36" E	119.93 FT	L96	S 00°26'59" W	7.47 FT
L47	S 00°26'59" W	34.85 FT	L97	S 89°33'01" E	8.97 FT

CURVE TABLE						
NO.	DELTA ANGLE	DEGREE OF CURVE-ARC	RADIUS	ARC LGTH	CHORD DIRECTION	CHORD LGTH
C1	90°53'00"	286°28'44"	20.00	31.72	S 45°26'30" W	28.50
C2	89°08'33"	603°06'48"	9.50	14.78	S 44°34'17" E	13.33
C3	51°19'04"	395°08'36"	14.50	12.99	N 65°11'55" E	12.56
C4	61°34'48"	125°55'29"	45.50	48.90	S 70°19'47" W	46.58
C5	38°05'25"	125°55'29"	45.50	30.25	N 59°50'06" W	29.69
C6	38°29'51"	125°55'29"	45.50	30.57	N 21°32'28" W	30.00
C7	41°48'25"	125°55'29"	45.50	33.20	N 18°36'40" E	32.47
C8	43°40'32"	125°55'29"	45.50	34.68	N 61°21'08" E	33.85
C9	58°59'07"	125°55'29"	45.50	46.84	S 67°19'02" E	44.80
C10	51°19'04"	395°08'36"	14.50	12.99	N 63°29'01" W	12.56
C11	90°58'41"	395°08'36"	14.50	23.02	S 45°22'06" W	20.68
C12	89°52'46"	395°08'36"	14.50	22.75	S 45°03'37" E	20.48
C13	51°19'04"	395°08'36"	14.50	12.99	N 64°20'28" E	12.56
C14	63°07'22"	125°55'29"	45.50	50.13	S 70°14'37" W	47.63
C15	58°36'22"	125°55'29"	45.50	46.54	N 48°53'32" W	44.54
C16	44°05'13"	381°58'19"	15.00	11.54	N 22°09'50" W	11.26
C17	68°37'07"	143°14'22"	40.00	47.90	S 09°53'53" E	45.09
C18	46°40'10"	143°14'22"	40.00	32.58	S 47°44'45" W	31.69
C19	74°35'27"	143°14'22"	40.00	52.07	N 71°37'27" W	48.47
C20	54°48'50"	395°08'36"	14.50	13.87	S 61°44'08" E	13.35
C21	90°51'27"	603°06'48"	9.50	15.06	N 45°25'43" E	13.54
C22	89°07'00"	286°28'44"	20.00	31.11	N 44°33'30" W	28.07

REGISTERED PROFESSIONAL LAND SURVEYOR  
 MAURICE E. FARR  
 SEPT. 23, 1977  
 1181  
 307  
 EXPIRES 12-31-07

VOL. 22 PAGE 41A

VOL. 22 PAGE 41A