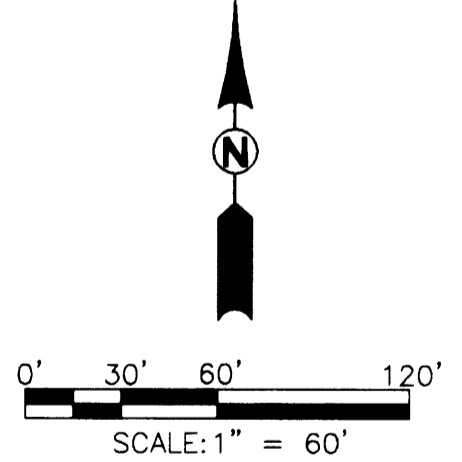
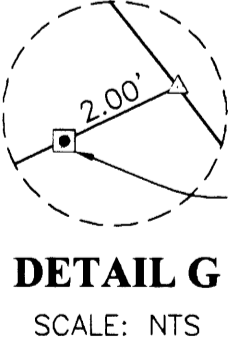
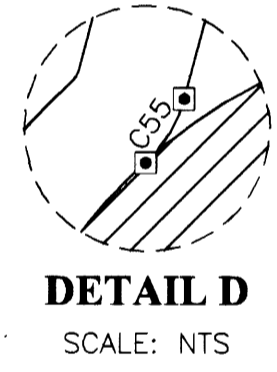
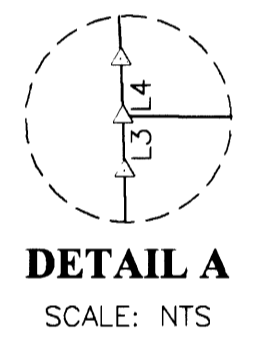
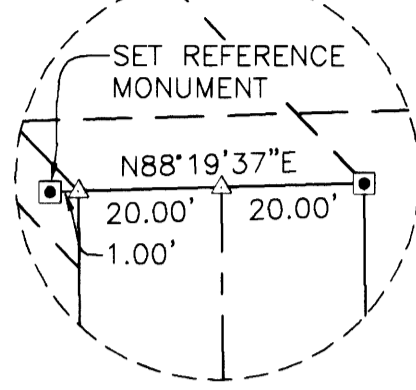


CURVE TABLE					
CURVE	CHORD BEARING	CHORD LENGTH	RADIUS	CURVE LENGTH	DELTA
C6	S31°17'44"W	28.40'	50.00'	28.80'	32°59'54"
C7	N06°29'00"E	52.05'	180.00'	52.23'	16°37'35"
C8	N06°29'00"E	57.83'	200.00'	58.04'	16°37'35"
C37	N20°09'47"W	81.78'	130.00'	83.19'	36°39'58"
C39	N25°33'04"W	76.16'	170.00'	76.82'	25°53'23"
C40	N20°09'47"W	94.36'	150.00'	95.99'	36°39'58"
C41	S34°39'58"E	24.05'	180.00'	24.06'	7°39'35"
C42	S26°35'41"E	90.74'	220.00'	91.40'	23°48'10"
C43	S15°40'48"E	94.12'	180.00'	95.23'	30°18'45"
C44	S07°36'31"E	54.27'	220.00'	54.41'	14°10'11"
C45	S19°30'36"E	130.14'	200.00'	132.55'	37°58'21"
C46	S44°11'23"W	16.89'	12.00'	18.73'	89°25'37"
C47	S45°48'37"E	17.06'	12.00'	18.97'	90°34'23"
C48	S71°31'34"W	30.82'	50.00'	31.33'	35°54'01"
C49	S14°12'30"W	126.86'	100.00'	137.42'	78°44'07"
C50	S63°22'08"W	140.12'	145.00'	146.24'	57°47'02"
	(N63°22'08"E	140.12'	145.00'	146.24'	57°47'02"R1
C51	N79°45'36"E	179.12'	415.00'	180.54'	24°55'34"
	(N79°45'36"E	179.12'	415.00'	180.54'	24°55'34"R1
C52	S81°24'01"W	65.19'	140.00'	65.79'	26°55'32"
	(N81°24'01"E	65.19'	140.00'	65.79'	26°55'32"R1
C53	N84°59'30"E	56.29'	165.00'	56.57'	19°38'35"
	(N84°59'30"E	56.29'	165.00'	56.57'	19°38'35"R1
C54	N52°44'04"W	26.59'	17.00'	30.53'	102°53'09"
	(S52°44'04"E	26.59'	17.00'	30.53'	102°53'09"R1
C55	N31°17'44"E	6.82'	12.00'	6.91'	32°59'54"

LINE TABLE		
LINE	BEARING	LENGTH
L1	N75°12'13"W	20.00'
L8	N01°49'48"W	9.29'
L9	N00°31'25"W	15.00'
L10	N00°31'25"W	15.00'
L11	S88°54'12"W	53.39'
L12	N88°19'37"E	40.00'
L13	S88°54'12"W	20.89'
L14	S88°54'12"W	53.00'
L15	N88°54'12"E	21.13'



**NOTE:**  
TROOST STREET, A PRIVATE ROADWAY, ALONG WITH THE MAINTENANCE EASEMENTS AS SHOWN HEREON ARE SUBJECT TO AN ACCESS EASEMENT OVER THEIR ENTIRETY, FOR THE INGRESS AND EGRESS OF MAINTENANCE PERSONNEL AND EQUIPMENT FOR THE ADJACENT PROPERTY KNOW AS THE POINT IN WAREWOOD.

**REMAINING PORTION OF PARCEL 2 OF LP 2005-0069**  
6.96 AC±

APPROXIMATE CENTERLINE OF A 40' WIDE POWER LINE EASEMENT PER VOL. 243, PG. 319 OF THE DOUGLAS COUNTY PLAT RECORDS

**LOT 26**  
0.46 AC±  
HATCHED AREA DEDICATED TO THE PUBLIC (SEE DECLARATION PG. 1)

- LEGEND**
- SET 5/8" x 30" IR w/CAP MARKED "I.E. ENGINEERING" UNLESS OTHERWISE NOTED
  - FOUND 5/8" IRON ROD UNLESS OTHERWISE NOTED
  - ⊙ FOUND 3/4" IRON PIPE
  - △ CALCULATED POSITION
  - ( ) R1 RECORD AS PER LP 2005-0069

**REGISTERED PROFESSIONAL LAND SURVEYOR**  
*Ronald A. Gumbly*  
**OREGON**  
JULY 14, 1978  
**RONALD A. GUMBLY**  
1854  
EXPIRES: 12/31/2006

**WAREWOOD TERRACE P.U.D.**  
LYING IN THE NW 1/4 OF SECTION 11, TOWNSHIP 27 SOUTH, RANGE 6 WEST, WILLAMETTE MERIDIAN, DOUGLAS COUNTY, OREGON

**SURVEYED FOR:**  
JERRY TABOR  
615 DAIRY LOOP RD.  
ROSEBURG, OR 97470

**SURVEYED BY:**  
741 SE Jackson Street  
Roseburg, Oregon 97470  
**PHONE (541) 673-0166**  
FAX (541) 440-9392  
iemail@ieengineering.com

**DWG. BY: JAC**

SCALE: AS SHOWN DATE: JULY, 2006 JOB NO: 104-30 PAGE: 3 OF 3