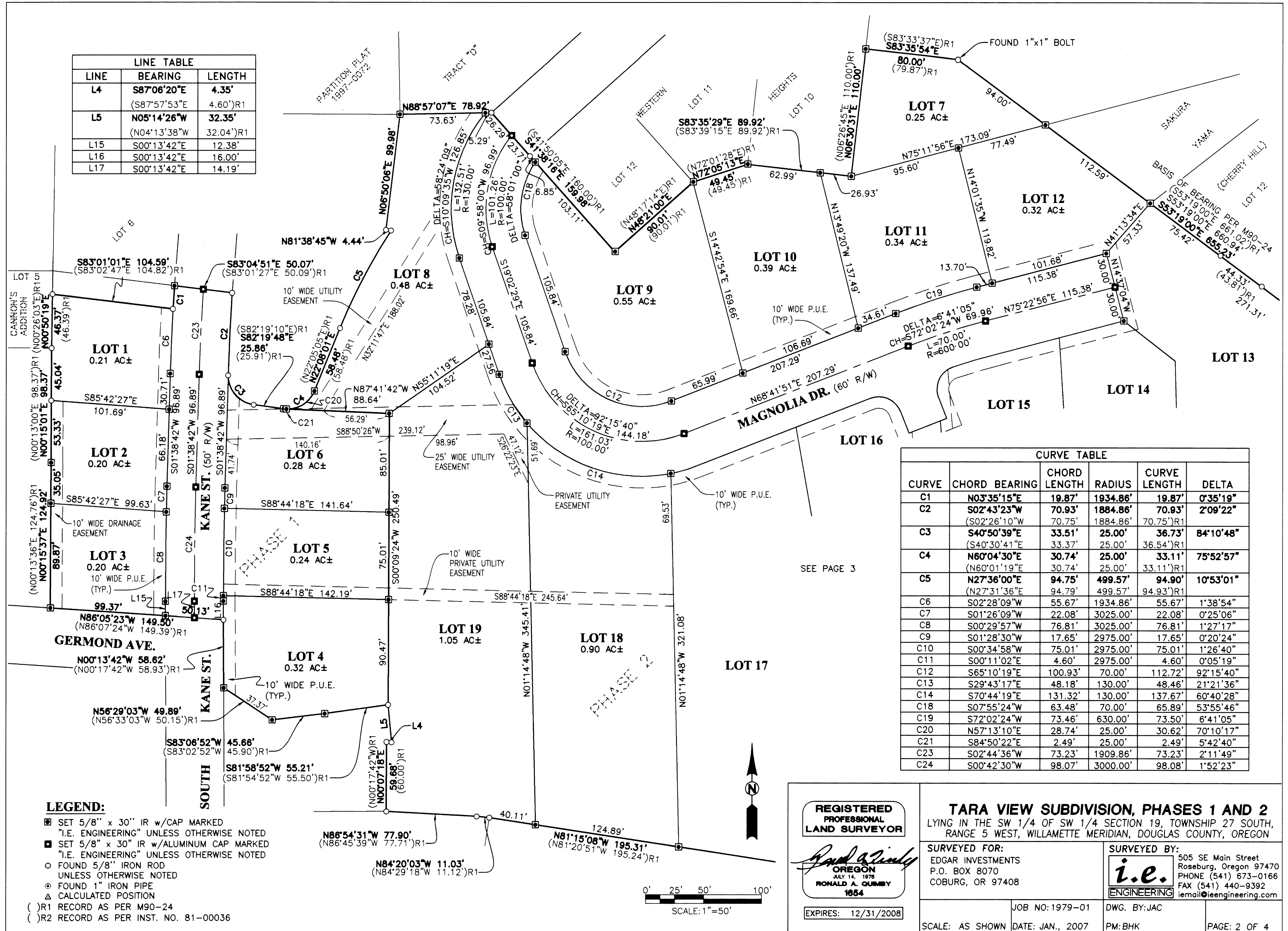


LINE TABLE		
LINE	BEARING	LENGTH
L4	S87°06'20"E (S87°57'53"E 4.60')R1	4.35'
L5	N05°14'26"W (N04°13'38"W 32.04')R1	32.35'
L15	S00°13'42"E	12.38'
L16	S00°13'42"E	16.00'
L17	S00°13'42"E	14.19'



CURVE TABLE					
CURVE	CHORD BEARING	CHORD LENGTH	RADIUS	CURVE LENGTH	DELTA
C1	N03°35'15"E	19.87'	1934.86'	19.87'	0°35'19"
C2	S02°43'23"W (S02°26'10"W 70.75')	70.93'	1884.86'	70.93'	2°09'22"
C3	S40°50'39"E (S40°30'41"E 33.37')	33.51'	25.00'	36.73'	84°10'48"
C4	N60°04'30"E (N60°01'19"E 30.74')	30.74'	25.00'	33.11'	75°52'57"
C5	N27°36'00"E (N27°31'36"E 94.79')	94.75'	499.57'	94.90'	10°53'01"
C6	S02°28'09"W	55.67'	1934.86'	55.67'	1°38'54"
C7	S01°26'09"W	22.08'	3025.00'	22.08'	0°25'06"
C8	S00°29'57"W	76.81'	3025.00'	76.81'	1°27'17"
C9	S01°28'30"W	17.65'	2975.00'	17.65'	0°20'24"
C10	S00°34'58"W	75.01'	2975.00'	75.01'	1°26'40"
C11	S00°11'02"E	4.60'	2975.00'	4.60'	0°05'19"
C12	S65°10'19"E	100.93'	70.00'	112.72'	92°15'40"
C13	S29°43'17"E	48.18'	130.00'	48.46'	21°21'36"
C14	S70°44'19"E	131.32'	130.00'	137.67'	60°40'28"
C18	S07°55'24"W	63.48'	70.00'	65.89'	53°55'46"
C19	S72°02'24"W	73.46'	630.00'	73.50'	6°41'05"
C20	N57°13'10"E	28.74'	25.00'	30.62'	70°10'17"
C21	S84°50'22"E	2.49'	25.00'	2.49'	5°42'40"
C23	S02°44'36"W	73.23'	1909.86'	73.23'	2°11'49"
C24	S00°42'30"W	98.07'	3000.00'	98.08'	1°52'23"

- LEGEND:**
- SET 5/8" x 30" IR w/CAP MARKED "I.E. ENGINEERING" UNLESS OTHERWISE NOTED
 - SET 5/8" x 30" IR w/ALUMINUM CAP MARKED "I.E. ENGINEERING" UNLESS OTHERWISE NOTED
 - FOUND 5/8" IRON ROD UNLESS OTHERWISE NOTED
 - ⊙ FOUND 1" IRON PIPE
 - △ CALCULATED POSITION
 - () R1 RECORD AS PER M90-24
 - () R2 RECORD AS PER INST. NO. 81-00036

REGISTERED PROFESSIONAL LAND SURVEYOR

Ronald A. Gummy

OREGON
JULY 14, 1978
RONALD A. GUMMY
1654

EXPIRES: 12/31/2008

TARA VIEW SUBDIVISION, PHASES 1 AND 2
LYING IN THE SW 1/4 OF SW 1/4 SECTION 19, TOWNSHIP 27 SOUTH, RANGE 5 WEST, WILLAMETTE MERIDIAN, DOUGLAS COUNTY, OREGON

SURVEYED FOR:
EDGAR INVESTMENTS
P.O. BOX 8070
COBURG, OR 97408

SURVEYED BY:
i.e.
ENGINEERING
505 SE Main Street
Roseburg, Oregon 97470
PHONE (541) 673-0166
FAX (541) 440-9392
iemail@engineering.com

JOB NO: 1979-01
DWG. BY: JAC
SCALE: AS SHOWN
DATE: JAN., 2007
PM: BHK
PAGE: 2 OF 4