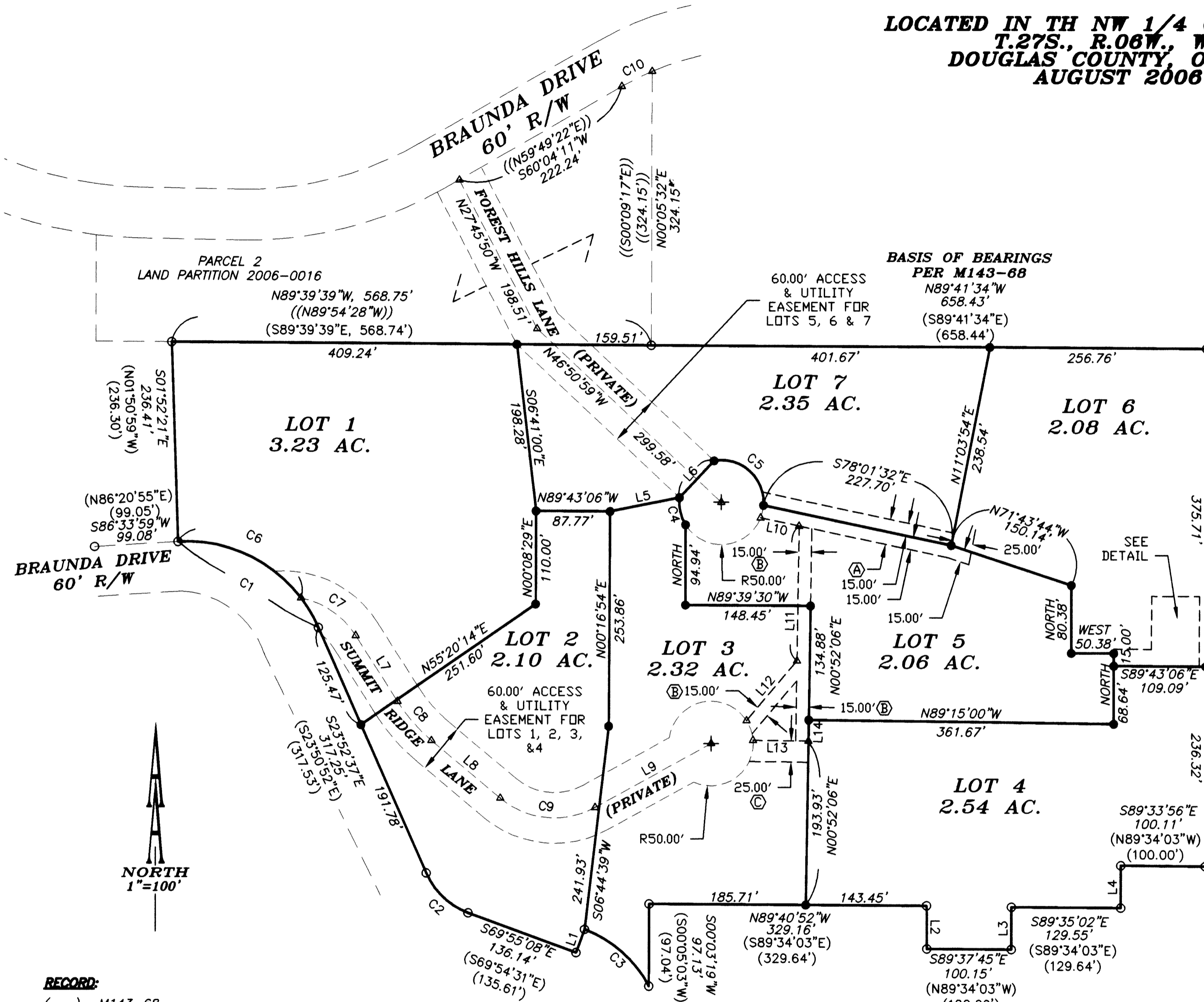


ALTA VIEW SUBDIVISION

LOCATED IN TH NW 1/4 OF SEC. 21,
T.27S., R.08W., W.M.
DOUGLAS COUNTY, OREGON
AUGUST 2008

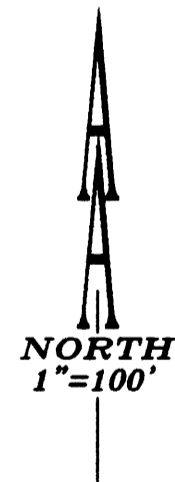


EASEMENTS

- (A) 30-FOOT ACCESS AND UTILITY EASEMENT BENEFITING LOTS 5, 6, & 7.
- (B) 15-FOOT PUBLIC UTILITY EASEMENT
- (C) 25-FOOT ACCESS AND UTILITY EASEMENT BENEFITING LOT 4

LINE TABLE		
LINE	LENGTH	BEARING
L1	29.43' (29.58')	N20°05'05"E (N20°09'16"E)
L2	50.90' (50.00')	S00°20'15"E (S00°10'37"W)
L3	49.98' (50.00')	N00°09'49"E (N00°10'37"E)
L4	50.02' (50.00')	S00°03'09"W (S00°05'26"W)
L5	83.83'	S78°43'55"W
L6	60.00'	N43°09'01"E
L7	92.22'	N32°29'47"W
L8	106.24'	N50°08'40"W
L9	156.94'	S61°06'23"W
L10	46.67'	S78°01'32"E
L11	159.59'	S00°52'06"E
L12	92.52'	S40°11'42"W
L13	65.50'	N89°15'00"W
L14	25.00'	N00°52'06"E

CURVE TABLE				
CURVE	RADIUS	LENGTH	CH. DIR.	CH. DIST.
C1	170.22' (170.22')	207.68' (207.53')	N58°39'50"W (N58°43'27"W)	195.04' (194.91')
C2	88.03' (88.03')	70.26' (70.77')	S46°37'43"E (S46°52'41"E)	68.41' (68.88')
C3	143.12' (143.12')	103.95' (103.95')	N48°42'48"W (N48°36'46"W)	101.68' (101.68')
C4	50.00'	33.31'	S12°48'20"E	32.70'
C5	50.00'	90.76'	N47°58'42"W	78.80'
C6	170.22'	166.90'	N65°31'40"W	160.29'
C7	100.00'	81.09'	N55°43'37"W	78.89'
C8	200.00'	61.60'	S41°19'13"E	61.36'
C9	100.00'	119.99'	S84°31'08"E	112.92'
C10	336.57' ((336.57'))	40.13' ((40.13'))	S63°22'23"W ((S63°07'34"W))	40.10' ((40.10'))

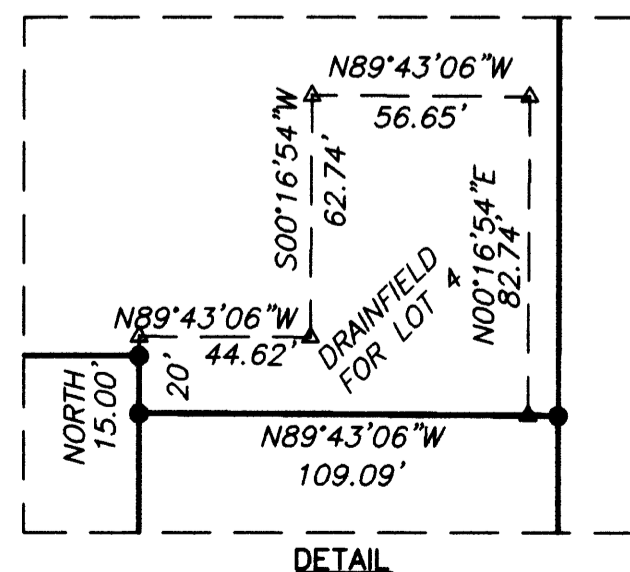


RECORD:

- () M143-68
RECORDS OF DOUGLAS COUNTY, OREGON
- (()) LAND PARTITION 2006-0016
RECORDS OF DOUGLAS COUNTY, OREGON

LEGEND:

- SET 5/8" X 30" IRON ROD WITH YELLOW PLASTIC CAP MARKED "AA SURVEYING INC."
- FOUND 5/8" IRON ROD UNLESS OTHERWISE NOTED.



SHEET 1 OF 2

REGISTERED
PROFESSIONAL
LAND SURVEYOR

Herman A. Pieske

OREGON
JULY 14, 1978
HERMAN A. PIESKE
1851

EXP. DATE: 12-31-06

AA
SURVEYING & ENGINEERING, INC.
ENGINEERING • SURVEYING • PLANNING

3076 NE DIAMOND LAKE BLVD.
ROSEBURG, OREGON 97470
TEL (541)672-2096
FAX (541)672-0611

