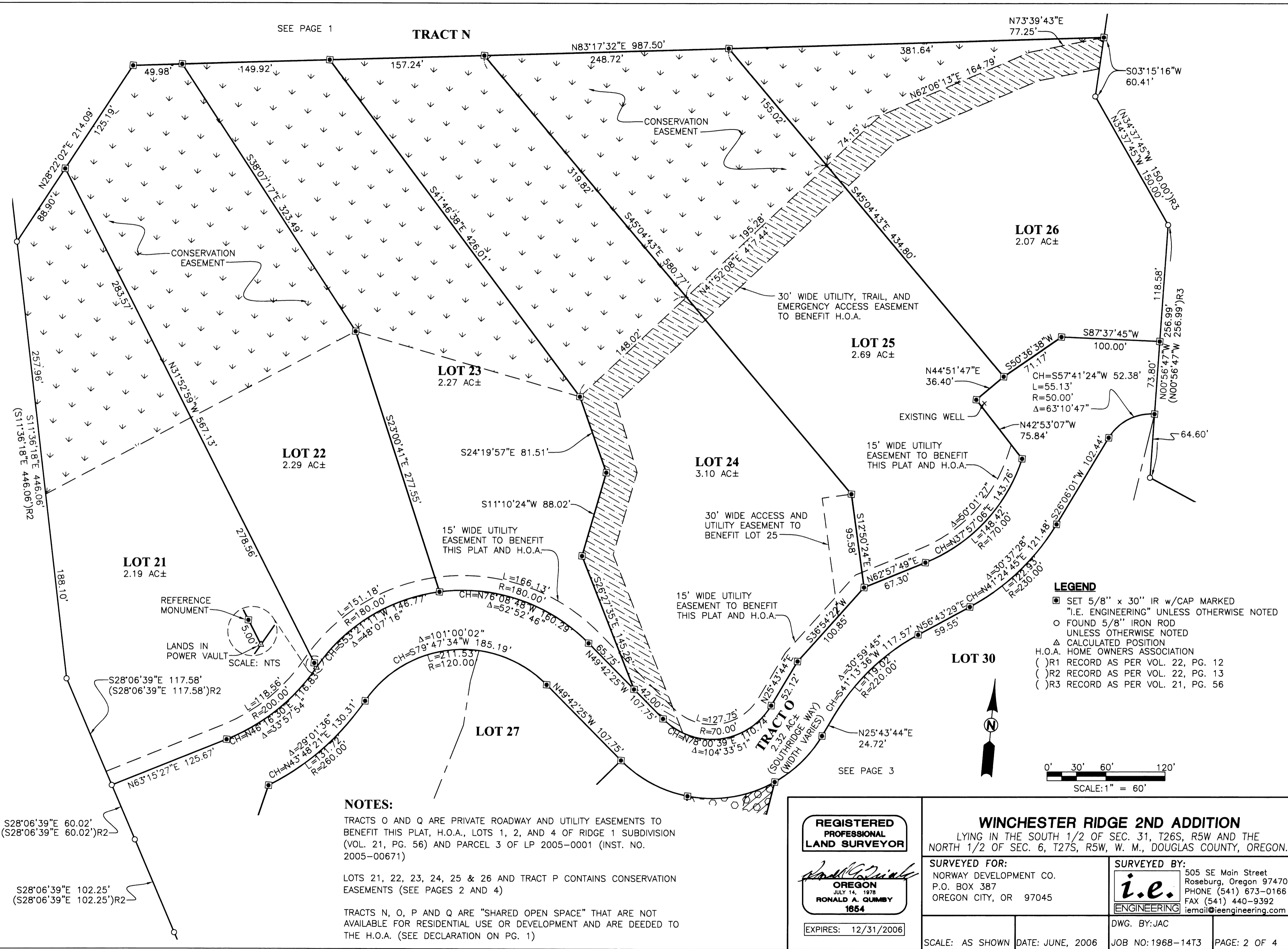


SEE PAGE 1

TRACT N



CONSERVATION EASEMENT

CONSERVATION EASEMENT

30' WIDE UTILITY, TRAIL, AND EMERGENCY ACCESS EASEMENT TO BENEFIT H.O.A.

LOT 25
2.69 AC±

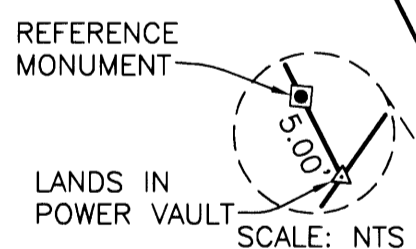
LOT 26
2.07 AC±

LOT 23
2.27 AC±

LOT 22
2.29 AC±

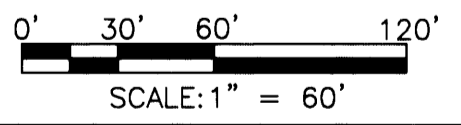
LOT 24
3.10 AC±

LOT 21
2.19 AC±



LANDS IN POWER VAULT

- LEGEND**
- SET 5/8" x 30" IR w/CAP MARKED "I.E. ENGINEERING" UNLESS OTHERWISE NOTED
 - FOUND 5/8" IRON ROD UNLESS OTHERWISE NOTED
 - △ CALCULATED POSITION
 - H.O.A. HOME OWNERS ASSOCIATION
 - () R1 RECORD AS PER VOL. 22, PG. 12
 - () R2 RECORD AS PER VOL. 22, PG. 13
 - () R3 RECORD AS PER VOL. 21, PG. 56



NOTES:

TRACTS O AND Q ARE PRIVATE ROADWAY AND UTILITY EASEMENTS TO BENEFIT THIS PLAT, H.O.A., LOTS 1, 2, AND 4 OF RIDGE 1 SUBDIVISION (VOL. 21, PG. 56) AND PARCEL 3 OF LP 2005-0001 (INST. NO. 2005-00671)

LOTS 21, 22, 23, 24, 25 & 26 AND TRACT P CONTAINS CONSERVATION EASEMENTS (SEE PAGES 2 AND 4)

TRACTS N, O, P AND Q ARE "SHARED OPEN SPACE" THAT ARE NOT AVAILABLE FOR RESIDENTIAL USE OR DEVELOPMENT AND ARE DEEDED TO THE H.O.A. (SEE DECLARATION ON PG. 1)

SEE PAGE 3

REGISTERED PROFESSIONAL LAND SURVEYOR

Ronald A. Gumbay

OREGON
JULY 14, 1978
RONALD A. GUMBAY
1854

EXPIRES: 12/31/2006

WINCHESTER RIDGE 2ND ADDITION
LYING IN THE SOUTH 1/2 OF SEC. 31, T26S, R5W AND THE NORTH 1/2 OF SEC. 6, T27S, R5W, W. M., DOUGLAS COUNTY, OREGON.

SURVEYED FOR: NORWAY DEVELOPMENT CO. P.O. BOX 387 OREGON CITY, OR 97045	SURVEYED BY: i.e. ENGINEERING 505 SE Main Street Roseburg, Oregon 97470 PHONE (541) 673-0166 FAX (541) 440-9392 iemail@ieengineering.com
SCALE: AS SHOWN	DWG. BY: JAC
DATE: JUNE, 2006	JOB NO: 1968-14T3
	PAGE: 2 OF 4