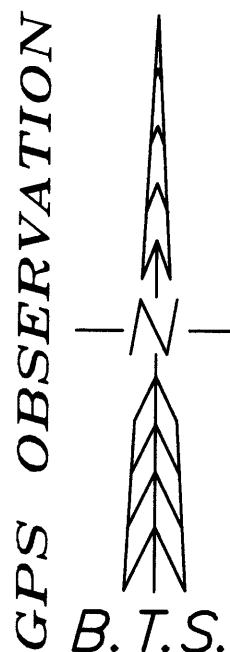


GENTRY ESTATES

LOCATED IN THE NE 1/4,
SECTION 7, T.30S., R.5W., W.M.
DOUGLAS COUNTY, OREGON

DOUGLAS COUNTY OFFICIAL RECORDS
BARBARA E. NIELSEN, COUNTY CLERK
2006-010884
NO FEE
04/28/2006 08:54:29 AM
RECEIPTCOUNTER
This is a no fee document

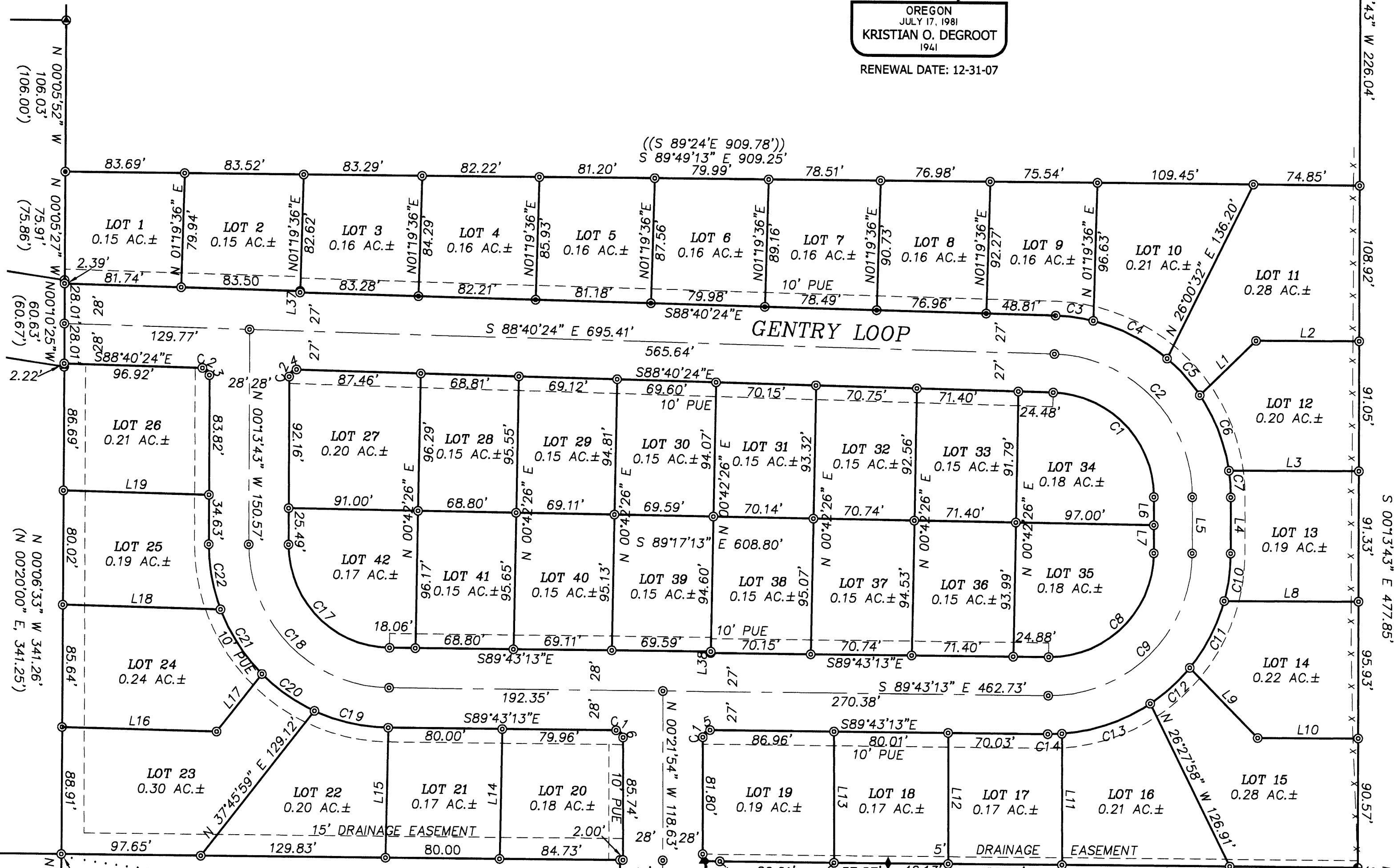
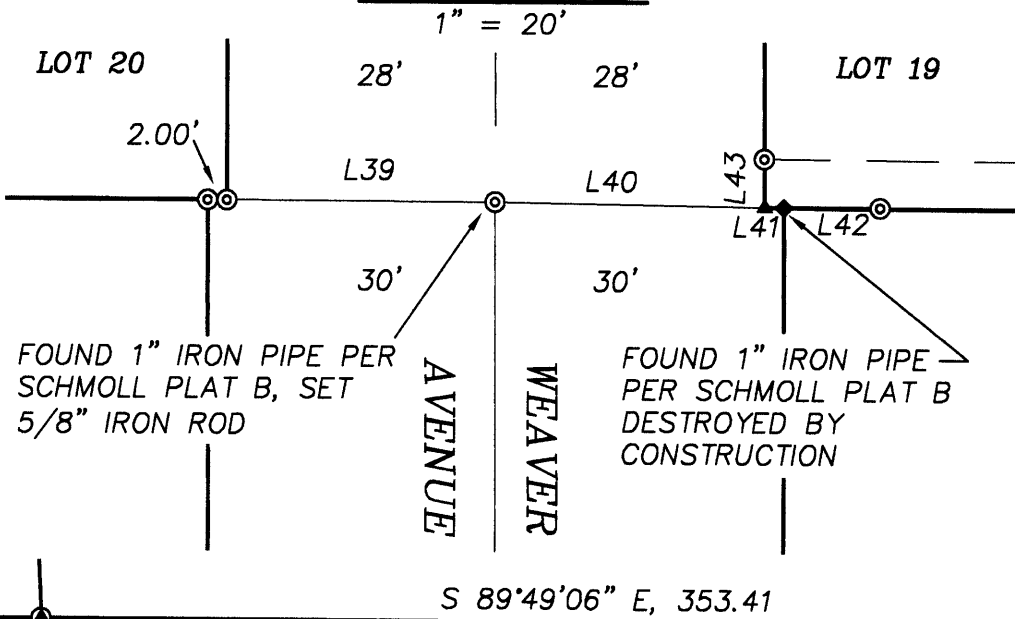
REGISTERED
PROFESSIONAL
LAND SURVEYOR
Kristian O. Degroot
OREGON
JULY 17, 1981
KRISTIAN O. DEGROOT
1941
RENEWAL DATE: 12-31-07



LEGEND:

- ⊙ = SET 5/8" x 30" IRON ROD w/PLASTIC CAP MK'D. "BTS ENG-SURV"
- ⊙ = FOUND 3/4" IRON PIPE PER CS 55/302-3
- ◆ = FOUND 5/8" IRON ROD PER M 100-46
- = FOUND 1" IRON PIPE SCHMOLL PLAT A (VOL.8, PG.32)
- ◆ = FOUND 1" IRON PIPE SCHMOLL PLAT B (VOL.10, PG.5)
- ⊙ = FOUND 2" IRON PIPE, INITIAL POINT, SCHMOLL PLAT A & SCHMOLL PLAT B (VOL. 8, PG. 32) & (VOL.10, PG.5)
- ⊙ = FOUND 1" IRON ROD PER 1994-0113
- = FOUND 1" IRON PIPE PER M 9-75
- ▲ = COMPUTED POINT
- PUE = PUBLIC UTILITY EASEMENT
- () = RECORD PER 1994-0113
- (()) = RECORD PER CS 55/302-3
- x-- = FENCE LINE

DETAIL



NO.	BEARING	DISTANCE	NO.	BEARING	DISTANCE
L1	N45°31'19"E	54.93	L17	N37°45'59"E	51.43
L2	N89°46'17"E	72.63	L18	S88°48'25"E	110.53
L3	N89°46'17"E	91.38	L19	S88°48'25"E	101.96
L4	S00°13'43"E	39.35	L37	S01°19'36"W	1.00
L5	S00°13'43"E	39.36	L38	S00°42'26"W	1.00
L6	S00°13'43"E	19.74	L39	S89°50'18"E	28.00
L7	S00°13'43"E	19.61	L40	S89°13'17"E	28.00
L8	N89°46'17"E	94.44	L41	S89°13'17"E	2.05
L9	S44°31'56"E	68.52	L42	N89°45'54"W	10.00
L10	N89°46'17"E	70.66	L43	N00°21'54"W	5.01
L11	N00°23'12"W	91.84			
L12	N00°23'12"W	91.68			
L13	N00°23'12"W	91.84			
L14	N00°46'58"E	90.86			
L15	N00°46'58"E	91.02			
L16	S88°48'25"E	108.29			

NO.	DELTA	RADIUS	ARC	CHORD BRG.	CHORD
C1	88°26'41"	73.00	112.69	N44°27'03"W	101.83
C2	88°26'41"	100.00	154.37	N44°27'03"W	139.49
C3	12°08'38"	127.00	26.92	N82°36'05"W	26.87
C4	26°28'41"	127.00	58.69	N63°17'25"W	58.17
C5	15°36'25"	127.00	34.59	N42°14'53"W	34.49
C6	25°45'13"	127.00	57.08	N21°34'04"W	56.61
C7	8°27'44"	127.00	18.76	N04°27'35"W	18.74
C8	90°30'30"	73.00	115.32	N45°01'32"E	103.69
C9	90°30'30"	100.00	157.97	N45°01'32"E	142.05
C10	15°11'46"	127.00	33.68	N07°22'10"E	33.58
C11	23°57'27"	127.00	53.10	N26°56'46"E	52.72
C12	16°56'45"	127.00	37.56	N47°23'52"E	37.42
C13	29°54'54"	127.00	66.31	N70°49'41"E	65.56
C14	4°30'18"	127.00	9.99	N88°02'17"E	9.98

C15	90°39'21"	5.00	7.91	S44°57'46"W	7.11
C16	89°21'19"	5.00	7.80	N45°02'34"W	7.03
C17	89°29'30"	72.00	112.46	S44°58'28"E	101.37
C18	89°29'30"	100.00	156.19	S44°58'28"E	140.79
C19	24°00'20"	128.00	53.63	S77°36'30"E	53.24
C20	20°16'51"	128.00	45.31	S55°27'54"E	45.07
C21	24°13'23"	128.00	54.11	S33°12'48"E	53.71
C22	20°52'23"	128.00	46.63	S10°39'55"E	46.37
C23	88°26'41"	5.00	7.72	N44°27'03"W	6.97
C24	91°33'19"	5.00	7.99	S45°32'57"W	7.17

BTS ENGINEERING & SURVEYING, INC.
431 S.E. MAIN ST., ROSEBURG, OR 97470
PHONE (541) 673-0966 FAX (541) 673-0105

SCALE: 1" = 60'	FOR: STULL ENTERPRISES, INC. 633 NE STEPHENS ROSEBURG, OR 97470	JOB #: 05-036
DATE: APRIL 11, 2006		FILE: 05-036GENTRYESTATES.DWG
		SHEET 1 OF 2

