

KOOKEN'S SUBDIVISION

PORTIONS OF LOT 1 AND LOT A, BLOCK 1
 INSTRUMENT NO. 1996-25013
 GLENGARRY FRUIT LANDS
 SW1/4, SEC 13, TWP 28 S, R 6 W, WM

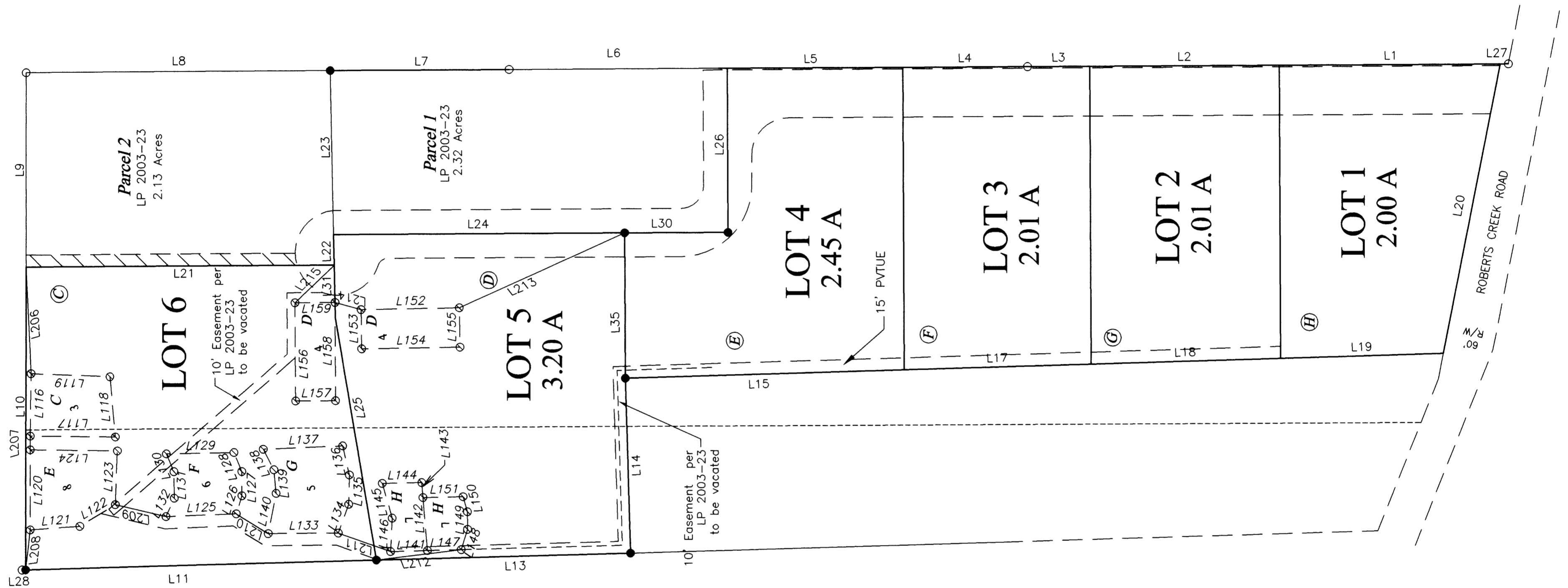
DOUGLAS COUNTY, OREGON

MAY 2004

SCALE 1" = 100'

PARTITIONERS AND OWNERS

JOHN R. & REGINA L. KOOKEN
 PO BOX 682
 ROSEBURG, OR 97470
 PH (541) 679-3477



LINE TABLE FOR SEPTIC DRAIN FIELDS

NO.	DIRECTION	DIST
L100	NOT USED	
L101	NOT USED	
L102	NOT USED	
L103	NOT USED	
L104	NOT USED	
L105	NOT USED	
L106	NOT USED	
L107	NOT USED	
L108	NOT USED	
L109	NOT USED	
L110	NOT USED	
L111	NOT USED	
L112	NOT USED	
L113	NOT USED	
L114	NOT USED	
L115	NOT USED	
L116	N 89°17'39" W	78.07 FT
L117	S 00°38'16" W	106.36 FT
L118	N 84°47'19" E	75.60 FT
L119	N 02°17'56" E	98.61 FT

NO.	DIRECTION	DIST
L120	N 90°00'00" W	100.13 FT
L121	S 04°15'00" E	61.88 FT
L122	S 31°17'36" E	51.98 FT
L123	S 87°45'29" E	67.09 FT
L124	N 00°47'43" E	108.76 FT
L125	S 02°19'10" E	87.65 FT
L126	S 72°32'31" E	23.70 FT
L127	N 89°42'23" E	30.12 FT
L128	N 67°18'21" E	25.74 FT
L129	N 01°07'03" W	84.30 FT
L130	S 66°53'07" W	24.19 FT
L131	S 89°23'04" W	33.03 FT
L132	N 66°14'09" W	25.24 FT
L133	S 00°27'03" E	87.62 FT
L134	S 70°07'55" E	38.09 FT
L135	S 88°41'56" E	36.60 FT
L136	N 76°55'48" E	37.32 FT
L137	N 02°21'40" W	99.38 FT
L138	S 62°33'45" W	29.11 FT
L139	S 84°35'13" W	29.43 FT

NO.	DIRECTION	DIST
L140	N 78°54'15" W	51.18 FT
L141	S 01°36'11" E	46.16 FT
L142	N 85°07'26" E	66.43 FT
L143	N 85°07'26" E	18.66 FT
L144	N 01°01'48" W	49.28 FT
L145	S 73°58'57" W	45.29 FT
L146	N 87°03'56" W	41.71 FT
L147	S 01°36'11" E	42.29 FT
L148	S 72°41'07" E	26.48 FT
L149	N 89°30'08" E	21.97 FT
L150	N 73°33'12" E	19.66 FT
L151	N 01°16'11" W	50.10 FT
L152	N 00°59'28" W	122.76 FT
L153	S 89°00'32" W	49.15 FT
L154	S 00°59'28" E	122.76 FT
L155	N 89°00'32" E	49.15 FT
L156	S 89°32'57" W	122.76 FT
L157	S 00°27'03" E	49.91 FT
L158	N 89°32'57" E	122.76 FT
L159	N 00°27'03" W	49.91 FT

NUMBER	DIRECTION	DISTANCE
L200	NOT USED	
L201	NOT USED	
L202	NOT USED	
L203	NOT USED	
L204	NOT USED	
L205	NOT USED	
L206	S 87°14'46" W	133.48 FT
L207	S 89°32'57" W	17.34 FT
L208	S 83°14'07" E	50.13 FT
L209	S 13°30'02" W	65.32 FT
L210	S 31°46'10" W	46.86 FT
L211	S 19°34'31" W	69.17 FT
L212	N 06°57'51" W	106.93 FT
L213	S 24°21'27" E	226.48 FT
L214	N 15°07'13" E	33.94 FT
L215	N 43°55'26" W	67.94 FT

REGISTERED
 PROFESSIONAL
 LAND SURVEYOR

Maurice E. Farr

OREGON
 SEPT. 23, 1977
 MAURICE E. FARR
 1181

EXPIRES 12-31-05

LEGEND

⊙ SET 5/8" X 30" I.R. WITH PLASTIC CAP
 MARKED
 M.E. FARR
 LS 1181

VOL. 21 PAGE 26 B

VOL. 21 PAGE 26 B