

DOUGLAS COUNTY OFFICIAL RECORDS
 BARBARA E. NIELSEN, COUNTY CLERK
 2005-031882
 NO FEE
 00133859200500318820090095
 12/22/2005 12:11:15 PM
 PLAT-SUB Cnt=1 Stn=1 RECEIPTCOUNTER
 This is a no fee document

EDGEVIEW ESTATES SUBDIVISION

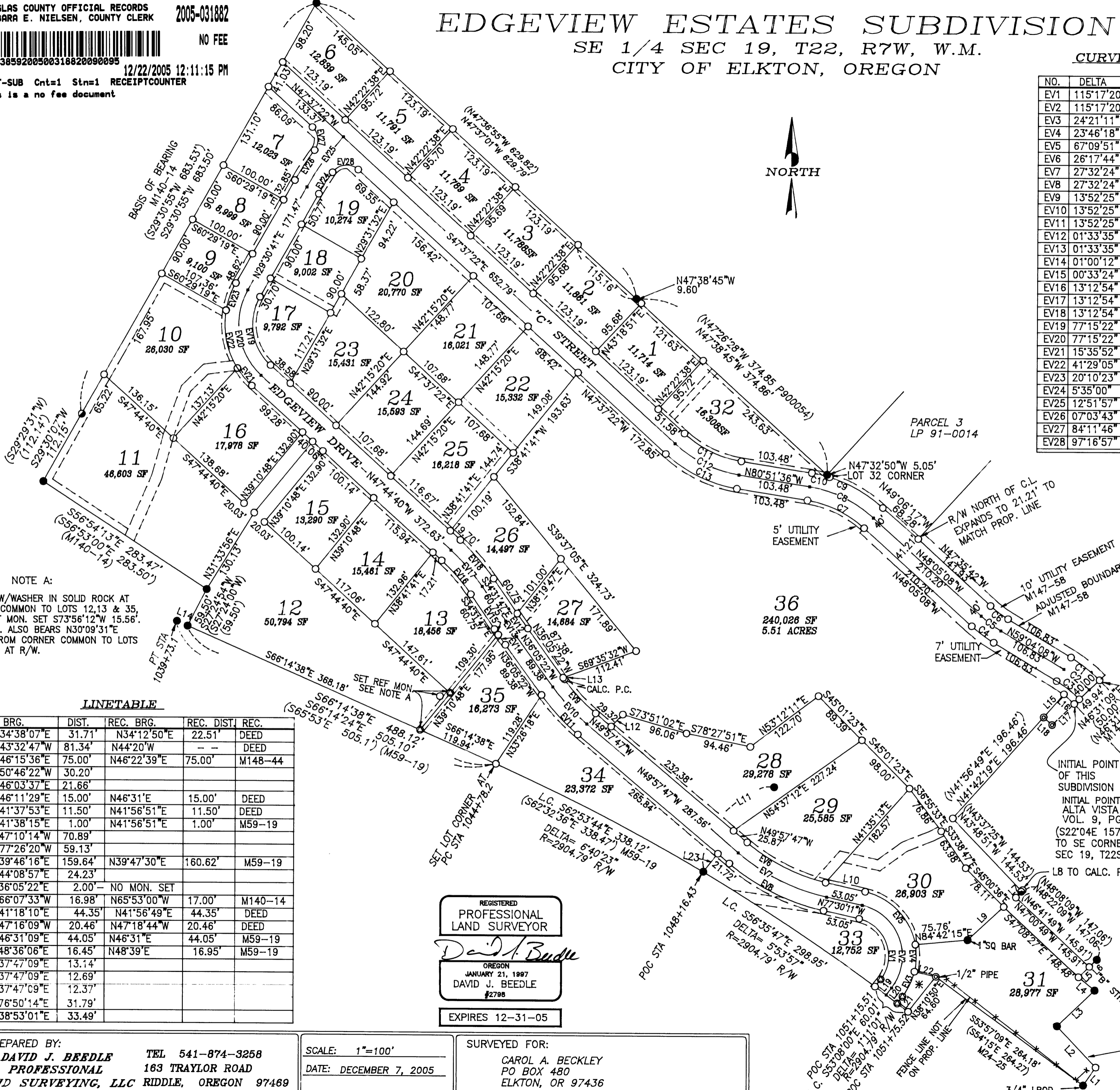
SE 1/4 SEC 19, T22, R7W, W.M.
 CITY OF ELKTON, OREGON

CURVE TABLE EDGEVIEW DRIVE

NO.	DELTA	RADIUS	LENGTH	CHORD BRG	CHORD
EV1	115°17'20"	55'	110.67'	N19°51'31"W	92.92'
EV2	115°17'20"	75'	150.91'	N19°51'31"W	126.71'
EV3	24°21'11"	95'	40.38'	N25°36'34"E	40.08'
EV4	23°46'18"	95'	39.42'	N01°32'49"E	39.13'
EV5	67°09'51"	95'	111.36'	N43°55'15"W	105.09'
EV6	26°17'44"	280'	128.50'	N63°06'39"W	127.38'
EV7	27°32'24"	300'	144.20'	N63°43'59"W	142.81'
EV8	27°32'24"	320'	153.81'	N63°43'59"W	152.34'
EV9	13°52'25"	280'	67.80'	N43°01'34"W	67.63'
EV10	13°52'25"	300'	72.64'	N43°01'34"W	72.46'
EV11	13°52'25"	320'	77.49'	N43°01'34"W	77.30'
EV12	01°33'35"	980'	26.68'	N35°18'34"W	26.68'
EV13	01°33'35"	1000'	27.22'	N35°18'34"W	27.22'
EV14	01°00'12"	1020'	17.86'	N35°44'33"W	17.86'
EV15	00°33'24"	1020'	9.91'	N34°31'46"W	9.91'
EV16	13°12'54"	280'	64.58'	N41°08'14"W	64.44'
EV17	13°12'54"	300'	69.19'	N41°08'14"W	69.04'
EV18	13°12'54"	320'	73.81'	N41°08'14"W	73.64'
EV19	77°15'22"	80'	107.87'	N09°07'00"W	99.88'
EV20	77°15'22"	100'	134.84'	N09°07'00"W	124.85'
EV21	15°35'52"	120'	32.67'	N39°56'44"W	32.57'
EV22	41°29'05"	120'	86.89'	N11°24'15"W	85.00'
EV23	20°10'23"	120'	42.25'	N19°25'30"E	42.03'
EV24	5°35'00"	380'	37.03'	N32°18'11"E	37.02'
EV25	12°51'57"	400'	89.82'	N35°56'40"E	89.63'
EV26	07°03'43"	420'	51.77'	N33°02'33"E	51.73'
EV27	84°11'46"	25'	36.74'	N05°31'29"W	33.52'
EV28	97°16'57"	25'	42.45'	N83°44'10"E	37.53'

CURVE TABLE "C" STREET

NO.	DELTA	RADIUS	LENGTH	CHORD BRG	CHORD
C1	15°01'51"	201.71'	52.91'	N51°33'11"W	52.76'
C2	14°58'10"	181.71'	47.48'	N51°35'02"W	47.34'
C3	14°53'41"	161.71'	42.04'	N51°37'19"W	41.92'
C4	11°26'56"	198.29'	39.62'	N53°20'39"W	39.56'
C5	11°26'56"	178.29'	35.63'	N53°20'39"W	35.57'
C6	11°26'56"	158.29'	31.63'	N53°20'39"W	31.58'
C7	33°14'25"	160'	92.82'	N64°14'24"W	91.53'
C8	33°14'25"	180'	102.97'	N64°14'24"W	102.97'
C9	25°42'43"	200'	89.75'	N60°28'34"W	89.00'
C10	07°31'39"	200'	26.28'	N77°05'47"W	26.26'
C11	33°14'14"	160'	92.82'	N64°14'29"W	91.52'
C12	33°14'14"	180'	104.42'	N64°14'29"W	102.96'
C13	33°14'14"	200'	116.02'	N64°14'29"W	114.40'



NOTE A:
 SET PK W/WASHER IN SOLID ROCK AT CORNER COMMON TO LOTS 12, 13 & 35, WITH REF MON. SET S73°56'12"W 15.56'. REF MON. ALSO BEARS N30°09'31"E 56.57' FROM CORNER COMMON TO LOTS 12 & 35 AT R/W.

LINETABLE

NO.	BRG.	DIST.	REC. BRG.	REC. DIST.	REC.
L1	N34°38'07"E	31.71'	N34°12'50"E	22.51'	DEED
L2	N43°32'47"W	81.34'	N44°20'W	--	DEED
L3	N46°15'36"E	75.00'	N46°22'39"E	75.00'	M148-44
L4	N50°46'22"W	30.20'			
L5	N46°03'37"E	21.66'			
L6	N46°11'29"E	15.00'	N46°31'E	15.00'	DEED
L7	N41°37'53"E	11.50'	N41°56'51"E	11.50'	DEED
L8	N41°38'15"E	1.00'	N41°56'51"E	1.00'	M59-19
L9	S47°10'14"W	70.89'			
L10	N77°26'20"W	59.13'			
L11	N39°46'16"E	159.64'	N39°47'30"E	160.62'	M59-19
L12	N44°08'57"E	24.23'			
L13	S36°05'22"E	2.00'	NO MON. SET		
L14	N66°07'33"W	16.98'	N65°53'00"W	17.00'	M140-14
L15	N41°18'10"E	44.35'	N41°56'49"E	44.35'	DEED
L16	N47°16'09"W	20.46'	N47°18'44"W	20.46'	DEED
L17	N46°31'09"E	44.05'	N46°31'E	44.05'	M59-19
L18	S48°36'06"E	16.45'	N48°39'E	16.95'	M59-19
L19	N37°47'09"E	13.14'			
L20	N37°47'09"E	12.69'			
L21	N37°47'09"E	12.37'			
L22	S76°50'14"E	31.79'			
L23	N38°53'01"E	33.49'			

REGISTERED PROFESSIONAL LAND SURVEYOR
David J. Beedle
 OREGON
 JANUARY 21, 1997
 DAVID J. BEEDLE
 #2798
 EXPIRES 12-31-05

LEGEND
 ○ SET 5/8"X30" IRON ROD W/PC *LS2798*
 ● FOUND 5/8" I. ROD PER M140-14, M59-19, OR AS NOTED
 ⊙ FOUND 1/2" I.ROD PER RECORD DATA
 ⊙ FOUND IRON PIPE PER RECORD DATA
 () RECORD DATA
 ⊙ CALCULATED POSITION, NO MONUMENT SET
 * CALCULATED STREET CENTER LINE POSITION
 x FENCE LINE
 * THIS 1341 SF PORTION IS DEDICATED AS RIGHT OF WAY ALONG WITH EDGEVIEW DRIVE

PREPARED BY:
DAVID J. BEEDLE TEL 541-874-3258
 PROFESSIONAL 163 TRAYLOR ROAD
 LAND SURVEYING, LLC RIDDLE, OREGON 97469

SCALE: 1"=100'
 DATE: DECEMBER 7, 2005

SURVEYED FOR:
 CAROL A. BECKLEY
 PO BOX 480
 ELKTON, OR 97436

VOL. 21 PAGE 68 A

VOL. 21 PAGE 68 A