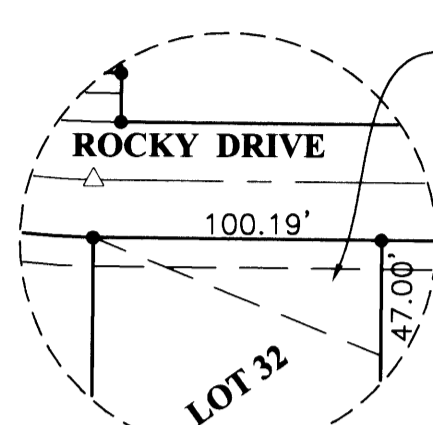
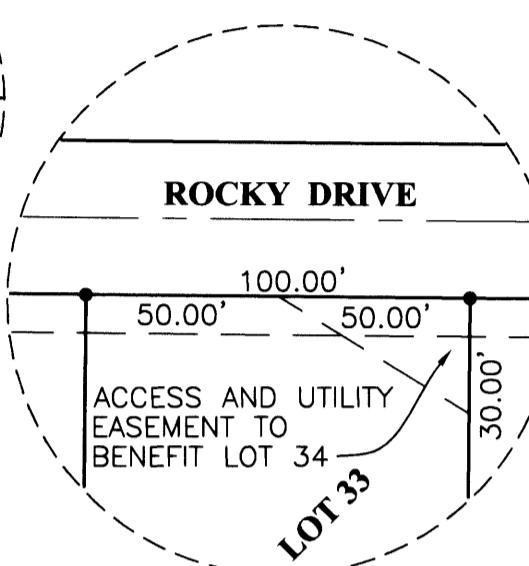


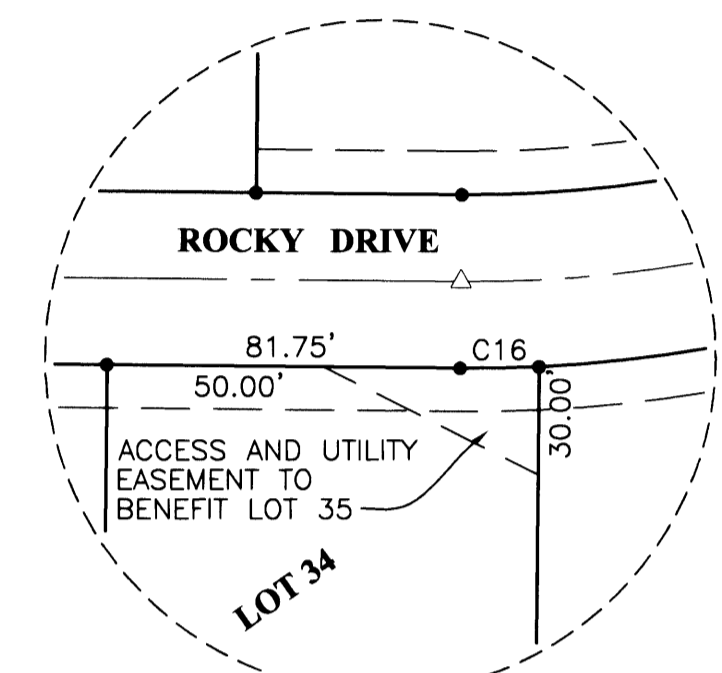
DETAIL A  
SCALE: NTS



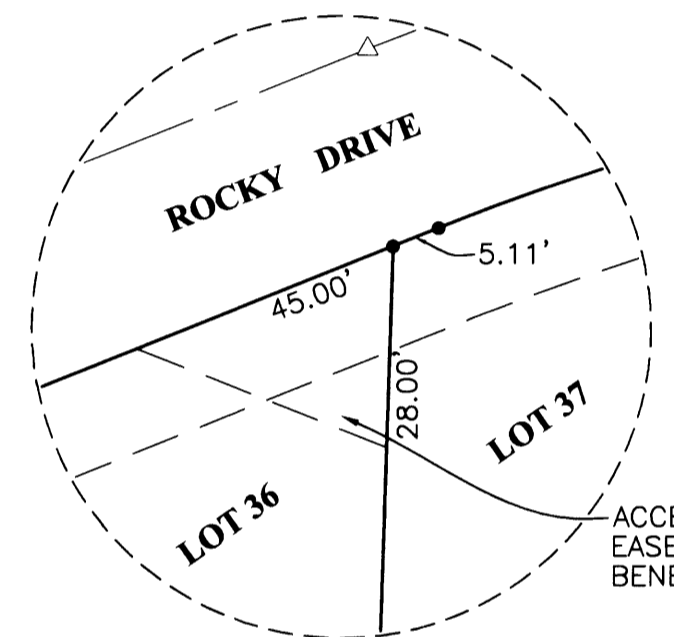
DETAIL B  
SCALE: NTS



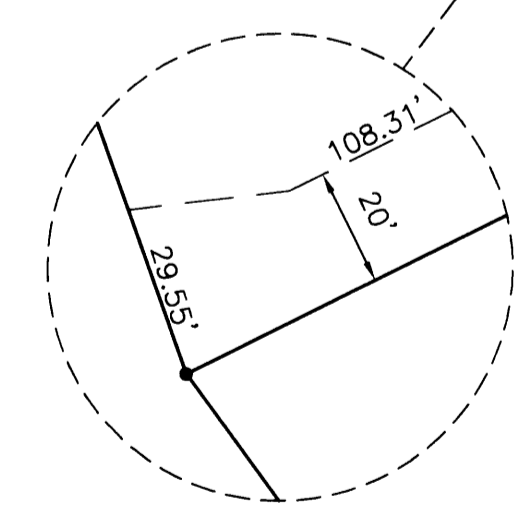
DETAIL C  
SCALE: NTS



DETAIL D  
SCALE: NTS



DETAIL E  
SCALE: NTS



DETAIL  
SCALE: NTS

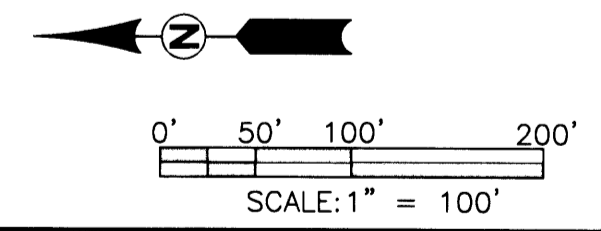
LINE TABLE		
LINE	BEARING	LENGTH
L1	(S04°31'00\"W	39.48')R1
L2	S04°31'00\"W	65.52'
L3	S04°31'00\"W	26.30'
L4	S04°31'00\"W	91.96'
L5	S04°31'00\"W	92.05'
L6	N88°07'20\"W	20.00'
L7	N88°07'20\"W	20.00'
L8	S01°52'40\"W	27.99'
L9	S10°07'26\"W	64.95'
L10	S51°06'35\"W	78.46'

CURVE TABLE				
CURVE	CHORD BEARING	CHORD LENGTH	RADIUS	CURVE LENGTH
C3	N37°01'44\"E	107.50'	100.00'	113.49'
C4	N37°01'44\"E	86.00'	80.00'	90.79'
C5	S60°10'13\"W	71.96'	221.00'	72.29'
C6	S39°49'48\"W	84.11'	221.00'	84.62'
C7	S23°20'51\"W	42.46'	221.00'	42.53'
C8	S09°06'55\"W	67.00'	221.00'	67.26'
C9	S34°58'06\"W	228.11'	201.00'	242.56'
C10	S61°23'03\"W	46.54'	164.00'	46.69'
C11	S26°48'42\"W	145.92'	164.00'	151.22'
C13	S10°45'31\"E	108.33'	280.00'	109.02'
C14	S10°45'31\"E	116.07'	300.00'	116.81'
C16	S01°14'19\"E	18.25'	320.00'	18.25'
C17	S11°31'18\"E	96.24'	320.00'	96.61'
C18	S21°02'30\"E	9.73'	320.00'	9.73'
C19	N10°01'03\"W	115.43'	280.00'	116.26'
C20	N10°01'03\"W	123.67'	300.00'	124.57'
C21	N10°01'03\"W	131.92'	320.00'	132.87'
C22	N66°59'30\"E	12.19'	137.00'	12.19'

**NOTE A:**  
10' P.U.E. (TYP.)  
SEE NOTE ON PG. 2

**NOTE B:**  
ALL OF ROCKY RIDGE DRIVE (A PRIVATE ROADWAY) AND EMERGENCY ACCESS ROAD ARE ALSO A PUBLIC UTILITY AND DRAINAGE EASEMENT.

- LEGEND**
- SET 5/8" x 30" IR w/CAP MARKED "I.E. ENGINEERING" UNLESS OTHERWISE NOTED
  - FOUND 5/8" IRON ROD UNLESS OTHERWISE NOTED
  - △ CALCULATED POSITION
  - ( ) R1 RECORD AS PER VOL. 21 PG. 34
  - ( ) R2 RECORD AS PER VOL. 20 PG. 36



<p><b>REGISTERED PROFESSIONAL LAND SURVEYOR</b></p> <p><i>Ronald A. Qumby</i></p> <p><b>OREGON</b> JULY 14, 1978 <b>RONALD A. QUMBY</b> 1654</p> <p>EXPIRES: 12/31/2006</p>	<p><b>ROCKY RIDGE P.U.D. 2, PHASE 2</b></p> <p>LYING IN THE NE 1/4 AND SE 1/4 OF SEC. 18, T 27 S, RANGE 5 WEST, WILLAMETTE MERIDIAN, DOUGLAS COUNTY, OREGON.</p>			
	<p><b>SURVEYED FOR:</b></p> <p>ROCKY RIDGE VENTURE, LLC 2178 NW ANDREA ST. ROSEBURG, OR 97470</p>	<p><b>SURVEYED BY:</b></p> <p><b>i.e. ENGINEERING</b> 741 SE Jackson Street Roseburg, Oregon 97470 PHONE (541) 673-0166 FAX (541) 440-9392 iemail@ieengineering.com</p>		
<p>SCALE: AS SHOWN</p>	<p>DATE: JAN., 2005</p>	<p>DWG. BY: JAC</p>	<p>JOB NO: 1403-17T12</p>	<p>PAGE: 1 OF 2</p>