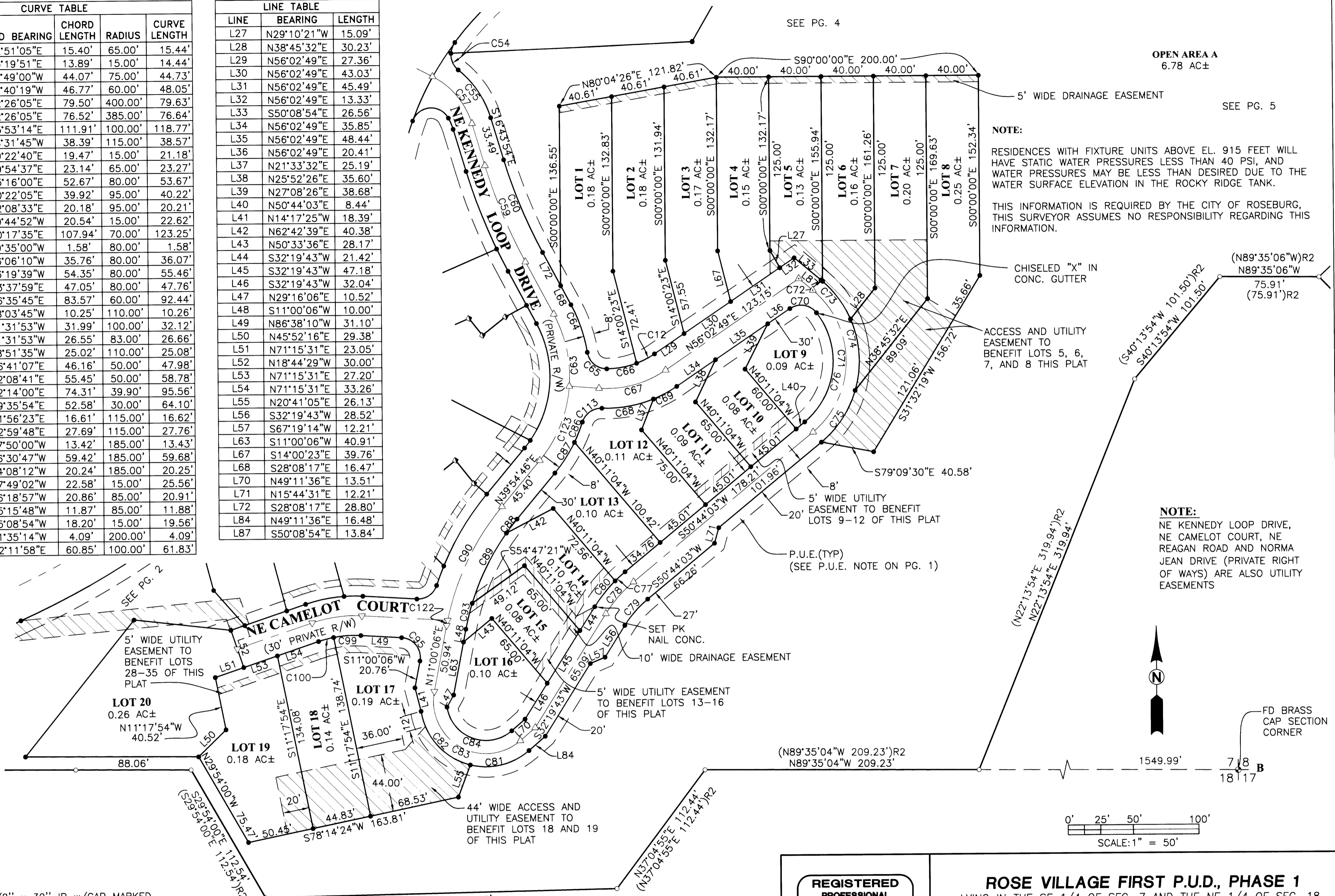


CURVE TABLE				
CURVE	CHORD BEARING	CHORD LENGTH	RADIUS	CURVE LENGTH
C12	N62°51'05"E	15.40'	65.00'	15.44'
C54	S23°19'51"E	13.89'	15.00'	14.44'
C55	N33°49'00"W	44.07'	75.00'	44.73'
C57	N39°40'19"W	46.77'	60.00'	48.05'
C59	S22°26'05"E	79.50'	400.00'	79.63'
C60	S22°26'05"E	76.52'	385.00'	76.64'
C63	N05°53'14"E	111.91'	100.00'	118.77'
C64	N18°31'45"W	38.39'	115.00'	38.57'
C65	S49°22'40"E	19.47'	15.00'	21.18'
C66	N79°54'37"E	23.14'	65.00'	23.27'
C67	N75°16'00"E	52.67'	80.00'	53.67'
C68	N80°22'05"E	39.92'	95.00'	40.22'
C69	N62°08'33"E	20.18'	95.00'	20.21'
C70	N80°44'52"W	20.54'	15.00'	22.62'
C71	N00°17'35"E	107.94'	70.00'	123.25'
C72	N49°35'00"W	1.58'	80.00'	1.58'
C73	N36°06'10"W	35.76'	80.00'	36.07'
C74	N03°19'39"W	54.35'	80.00'	55.46'
C75	N33°37'59"E	47.05'	80.00'	47.76'
C76	N06°35'45"E	83.57'	60.00'	92.44'
C77	S48°03'45"W	10.25'	110.00'	10.26'
C78	S41°31'53"W	31.99'	100.00'	32.12'
C79	S41°31'53"W	26.55'	83.00'	26.66'
C80	S38°51'35"W	25.02'	110.00'	25.08'
C81	N76°41'07"E	46.16'	50.00'	47.98'
C82	S42°08'41"E	55.45'	50.00'	58.78'
C83	S62°14'00"E	74.31'	39.90'	95.56'
C84	S69°35'54"E	52.58'	30.00'	64.10'
C86	N21°56'23"E	16.61'	115.00'	16.62'
C87	N32°59'48"E	27.69'	115.00'	27.76'
C88	S37°50'00"W	13.42'	185.00'	13.43'
C89	S26°30'47"W	59.42'	185.00'	59.68'
C93	S14°08'12"W	20.24'	185.00'	20.25'
C95	N37°49'02"W	22.58'	15.00'	25.56'
C99	S86°18'57"W	20.86'	85.00'	20.91'
C100	S75°15'48"W	11.87'	85.00'	11.88'
C113	S55°08'54"W	18.20'	15.00'	19.56'
C122	S11°35'14"W	4.09'	200.00'	4.09'
C123	N22°11'58"E	60.85'	100.00'	61.83'

LINE TABLE		
LINE	BEARING	LENGTH
L27	N29°10'21"W	15.09'
L28	N38°45'32"E	30.23'
L29	N56°02'49"E	27.36'
L30	N56°02'49"E	43.03'
L31	N56°02'49"E	45.49'
L32	N56°02'49"E	13.33'
L33	S50°08'54"E	26.56'
L34	N56°02'49"E	35.85'
L35	N56°02'49"E	48.44'
L36	N56°02'49"E	20.41'
L37	N21°33'32"E	25.19'
L38	N25°52'29"E	35.60'
L39	N27°08'26"E	38.68'
L40	N50°44'03"E	8.44'
L41	N14°17'25"W	18.39'
L42	N62°42'39"E	40.38'
L43	N50°33'36"E	28.17'
L44	S32°19'43"W	21.42'
L45	S32°19'43"W	47.18'
L46	S32°19'43"W	32.04'
L47	N29°16'06"E	10.52'
L48	S11°00'06"W	10.00'
L49	N86°38'10"W	31.10'
L50	N45°52'16"E	29.38'
L51	N71°15'31"E	23.05'
L52	N18°44'29"W	30.00'
L53	N71°15'31"E	27.20'
L54	N71°15'31"E	33.26'
L55	N20°41'05"E	26.13'
L56	S32°19'43"W	28.52'
L57	S67°19'14"W	12.21'
L63	S11°00'06"W	40.91'
L67	S14°00'23"E	39.76'
L68	S28°08'17"E	16.47'
L70	N49°11'36"E	13.51'
L71	N15°44'31"E	12.21'
L72	S28°08'17"E	28.80'
L84	N49°11'36"E	16.48'
L87	S50°08'54"E	13.84'



- LEGEND**
- SET 5/8" x 30" IR w/CAP MARKED "I.E. ENGINEERING" UNLESS OTHERWISE NOTED
 - FOUND 5/8" IRON ROD UNLESS OTHERWISE NOTED
 - △ CALCULATED POSITION
 - INTERSECTION OF CENTER OF STUD WALL
 - ◆ FOUND BRASS CAP AS NOTED
 - SET 5/8" IRON ROD W/ALUMINUM CAP MARKED "I.E. ENGINEERING"
- ()R1 RECORD AS PER VOL. 21, PG. 8
 ()R2 RECORD AS PER M147-39

REGISTERED PROFESSIONAL LAND SURVEYOR

Ronald A. Gumbly

OREGON
 JULY 14, 1978
 RONALD A. GUMBLY
 1654

EXPIRES: 12/31/2006

ROSE VILLAGE FIRST P.U.D., PHASE 1
 LYING IN THE SE 1/4 OF SEC. 7 AND THE NE 1/4 OF SEC. 18, T 27 S, R 5 W, WILLAMETTE MERIDIAN, DOUGLAS COUNTY, OREGON.

SURVEYED FOR:
 ROSE VILLAGE, LLC
 200 LITTLEBROOK LN
 ROSEBURG, OR 97470

SURVEYED BY:
 741 SE Jackson Street
 Roseburg, Oregon 97470
 PHONE (541) 673-0166
 FAX (541) 440-9392
 iemail@ieengineering.com

DWG. BY: JAC

SCALE: AS SHOWN DATE: MARCH, 2005 JOB NO: 144-08 T7 PAGE: 3 OF 5