

**DETAIL D**  
SCALE: NTS

**DETAIL A**  
SCALE: NTS

**DETAIL E**  
SCALE: NTS

**DETAIL B**  
SCALE: NTS

**LEGEND**

- SET 5/8" x 30" IR w/CAP MARKED "I.E. ENGINEERING" UNLESS OTHERWISE NOTED
  - FOUND 5/8" IRON ROD UNLESS OTHERWISE NOTED
  - △ CALCULATED POSITION
  - INTERSECTION OF CENTER OF STUD WALL
  - ◆ FOUND BRASS CAP AS NOTED
  - SET 5/8" IRON ROD w/ALUMINUM CAP MARKED "IE ENGINEERING"
- ( )R1 RECORD AS PER VOL. 21, PG. 8  
( )R2 RECORD AS PER M147-39

CURVE TABLE				
CURVE	CHORD BEARING	CHORD LENGTH	RADIUS	CURVE LENGTH
C15	N40°37'46"E	16.55'	593.42'	16.55'
C49	S33°25'47"W	49.30'	275.00'	49.37'
C50	S24°51'15"W	32.93'	275.00'	32.95'
C51	S16°05'03"W	114.41'	250.00'	115.43'
C52	S18°01'14"W	32.63'	275.00'	32.65'
C53	S85°43'55"W	27.33'	15.00'	34.38'
C56	N22°40'14"W	9.31'	45.00'	9.33'
C58	S21°06'59"E	63.46'	415.00'	63.52'
C61	S26°49'10"E	19.10'	415.00'	19.10'
C62	N03°26'25"E	89.02'	85.00'	93.69'
C85	N37°27'56"E	7.26'	85.00'	7.26'
C91	S31°22'47"W	63.80'	215.00'	64.04'
C92	S20°44'50"W	15.75'	215.00'	15.76'
C94	N56°00'21"E	18.20'	15.00'	19.56'
C96	S89°46'58"W	14.37'	115.00'	14.38'
C97	S78°43'49"W	29.91'	115.00'	29.99'
C98	S82°18'41"W	38.34'	100.00'	38.58'
C100	S75°15'48"W	11.87'	85.00'	11.88'
C101	S11°27'53"W	67.35'	225.00'	67.61'
C102	S08°44'17"W	56.36'	275.00'	56.46'
C103	N18°54'01"E	95.98'	173.65'	97.25'
C104	N21°20'37"E	141.84'	223.65'	144.33'
C105	N21°20'37"E	125.98'	198.65'	128.19'
C107	N37°23'13"E	14.81'	173.65'	14.81'
C108	N52°58'54"E	292.78'	643.42'	295.36'
C109	N43°11'44"E	36.60'	593.42'	36.60'
C110	N48°11'52"E	66.98'	593.42'	67.02'
C111	N54°25'27"E	61.93'	593.42'	61.96'
C112	N52°58'54"E	281.40'	618.42'	283.89'
C114	N59°07'25"E	35.38'	593.42'	35.38'
C115	N62°34'10"E	35.99'	593.42'	35.99'
C116	N65°13'11"E	18.91'	593.42'	18.91'
C117	S63°42'51"W	27.43'	325.00'	27.43'
C118	S48°13'46"W	169.07'	275.00'	171.86'
C119	S48°07'00"W	185.57'	300.00'	188.66'
C120	S45°41'54"W	174.77'	325.00'	176.95'
C124	S24°27'11"W	37.09'	261.66'	37.12'
C125	S33°27'50"W	30.91'	225.00'	30.93'

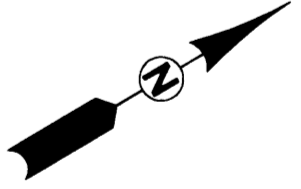
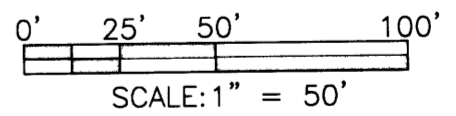
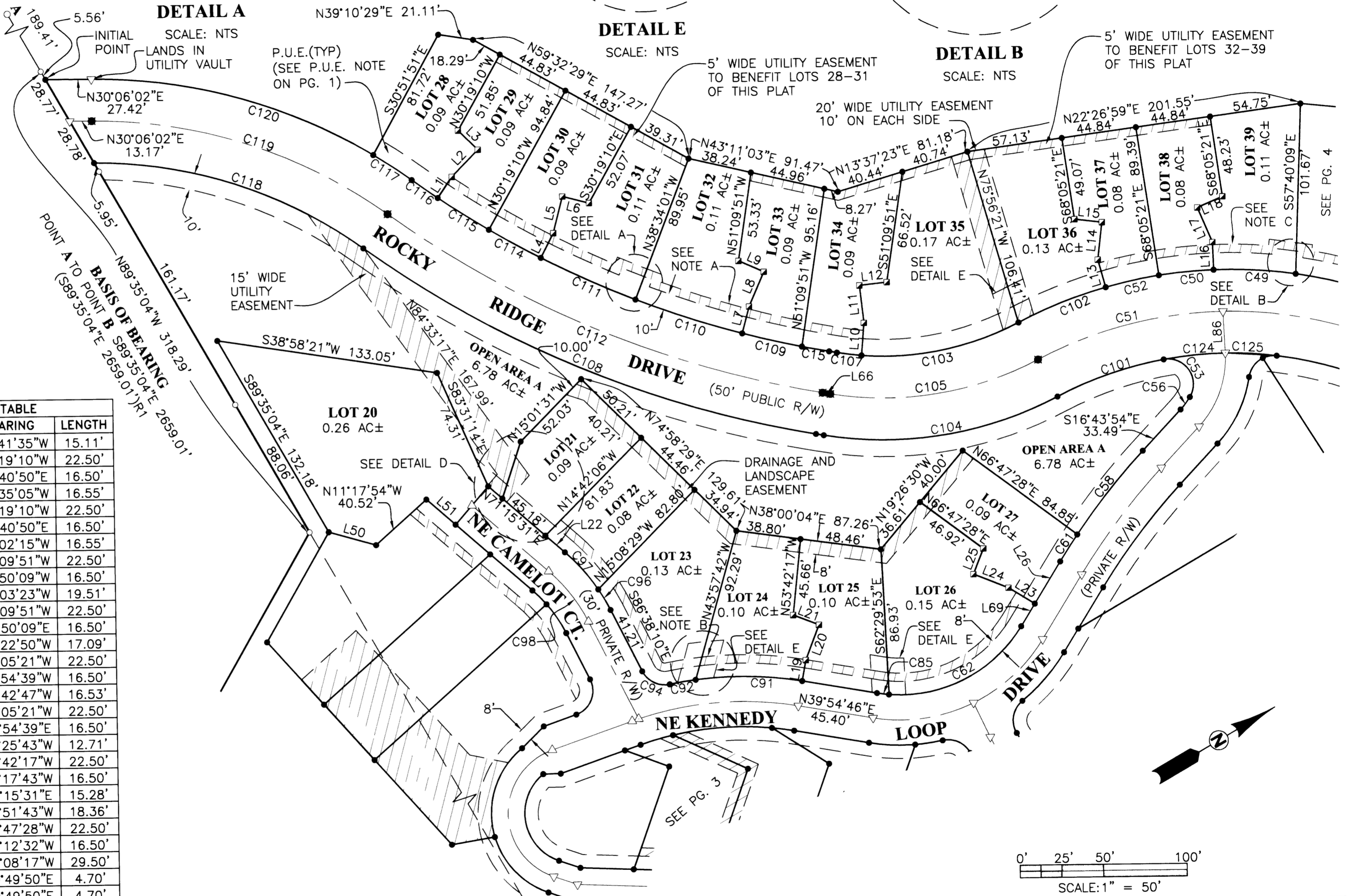
LINE TABLE		
LINE	BEARING	LENGTH
L1	N25°41'35"W	15.11'
L2	N15°19'10"W	22.50'
L3	N74°40'50"E	16.50'
L4	N32°35'05"W	16.55'
L5	N45°19'10"W	22.50'
L6	N44°40'50"E	16.50'
L7	N45°02'15"W	16.55'
L9	S53°50'09"W	16.50'
L10	N55°03'23"W	19.51'
L11	N66°09'51"W	22.50'
L12	N23°50'09"E	16.50'
L13	N75°22'50"W	17.09'
L14	N53°05'21"W	22.50'
L15	S36°54'39"W	16.50'
L16	N61°42'47"W	16.53'
L17	N83°05'21"W	22.50'
L18	N06°54'39"E	16.50'
L19	N49°25'43"W	12.71'
L20	N38°42'17"W	22.50'
L21	S51°17'43"W	16.50'
L22	N71°15'31"E	15.28'
L23	S61°51'43"W	18.36'
L24	S51°47'28"W	22.50'
L25	N38°12'32"W	16.50'
L26	N28°08'17"W	29.50'
L66	N39°49'50"E	4.70'
L67	N39°49'50"E	4.70'
L68	S28°08'17"E	16.47'
L69	S28°08'17"E	15.77'
L86	S62°36'43"E	24.79'

**NOTE A:**  
5' WIDE UTILITY EASEMENT TO BENEFIT LOTS 28 THRU 35 OF THIS PLAT

**NOTE B:**  
5' WIDE UTILITY EASEMENT TO BENEFIT LOTS 21 THRU 27 OF THIS PLAT

**NOTE:**  
NE KENNEDY LOOP DRIVE, NE CAMELOT COURT, NE REAGAN ROAD AND NORMA JEAN DRIVE (PRIVATE RIGHT OF WAYS) ARE ALSO UTILITY EASEMENTS

**NOTE C:**  
5' WIDE UTILITY EASEMENT TO BENEFIT LOTS 36 THRU 45 OF THIS PLAT



<p><b>REGISTERED PROFESSIONAL LAND SURVEYOR</b></p> <p><i>Ronald A. Gummy</i></p> <p><b>OREGON</b> JULY 14, 1978 <b>RONALD A. GUMMY</b> 1854</p> <p>EXPIRES: 12/31/2006</p>	<p><b>ROSE VILLAGE FIRST P.U.D., PHASE 1</b> LYING IN THE SE 1/4 OF SEC. 7 AND THE NE 1/4 OF SEC. 18, T 27 S, R 5 W, WILLAMETTE MERIDIAN, DOUGLAS COUNTY, OREGON.</p>	
	<p><b>SURVEYED FOR:</b> ROSE VILLAGE, LLC 200 LITTLEBROOK LN ROSEBURG, OR 97470</p>	<p><b>SURVEYED BY:</b> <b>i.e.</b> ENGINEERING 741 SE Jackson Street Roseburg, Oregon 97470 PHONE (541) 673-0166 FAX (541) 440-9392 iemail@ieengineering.com</p>
<p>SCALE: AS SHOWN</p>	<p>DATE: MARCH, 2005</p>	<p>JOB NO: 144-08 T7</p>