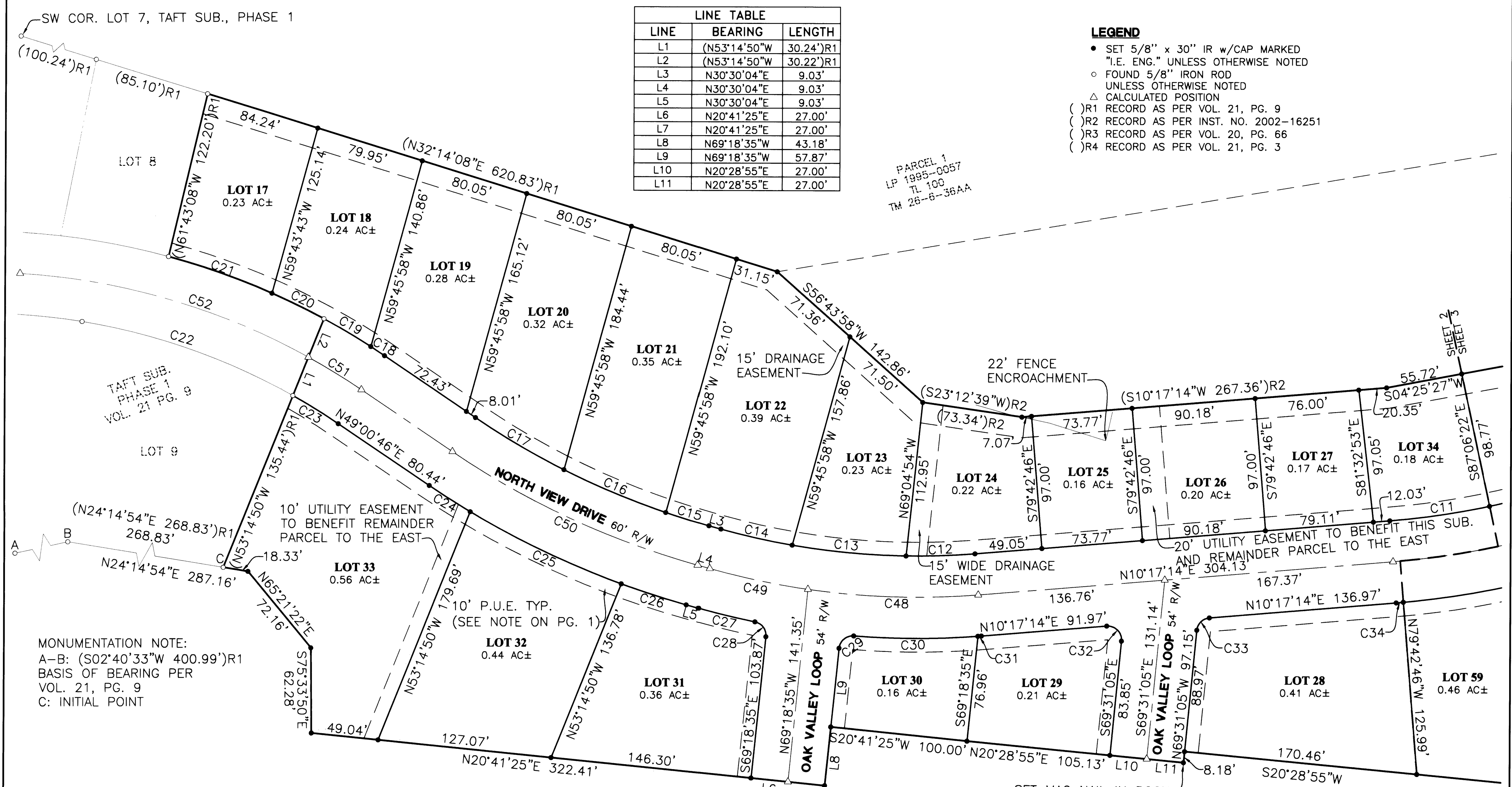


LINE TABLE		
LINE	BEARING	LENGTH
L1	(N53°14'50"W	30.24')R1
L2	(N53°14'50"W	30.22')R1
L3	N30°30'04"E	9.03'
L4	N30°30'04"E	9.03'
L5	N30°30'04"E	9.03'
L6	N20°41'25"E	27.00'
L7	N20°41'25"E	27.00'
L8	N69°18'35"W	43.18'
L9	N69°18'35"W	57.87'
L10	N20°28'55"E	27.00'
L11	N20°28'55"E	27.00'

- LEGEND**
- SET 5/8" x 30" IR w/CAP MARKED "I.E. ENG." UNLESS OTHERWISE NOTED
 - FOUND 5/8" IRON ROD UNLESS OTHERWISE NOTED
 - △ CALCULATED POSITION
 - ()R1 RECORD AS PER VOL. 21, PG. 9
 - ()R2 RECORD AS PER INST. NO. 2002-16251
 - ()R3 RECORD AS PER VOL. 20, PG. 66
 - ()R4 RECORD AS PER VOL. 21, PG. 3

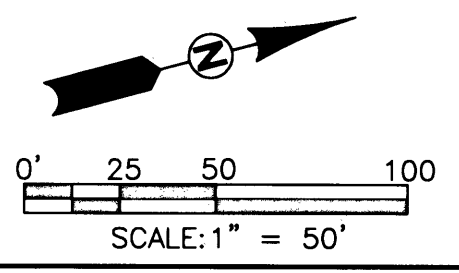
PARCEL 1
LP 1995-0057
TL 100
TM 26-6-36AA



MONUMENTATION NOTE:
A-B: (S02°40'33"W 400.99')R1
BASIS OF BEARING PER
VOL. 21, PG. 9
C: INITIAL POINT

CURVE TABLE				
CURVE	CHORD BEARING	CHORD LENGTH	RADIUS	CURVE LENGTH
C11	N06°35'26"E	73.50'	570.00'	73.55'
C12	N13°00'25"E	50.39'	531.00'	50.41'
C13	N20°14'17"E	83.54'	531.00'	83.62'
C14	N27°37'31"E	53.28'	531.00'	53.30'
C15	N32°06'34"E	32.76'	583.63'	32.76'
C16	N37°40'52"E	80.68'	583.63'	80.74'
C17	N45°19'43"E	75.00'	583.63'	75.06'
C18	S48°21'47"W	12.02'	530.00'	12.02'
C19	S45°33'30"W	39.86'	530.00'	39.87'
C20	S41°06'58"W	42.31'	(530.00')R1	42.32'
C21	S34°29'30"W	80.16'	(530.00')R1	80.24'
C22	(S34°15'49"W	163.12'	470.00'	163.95')R1
C23	S46°38'06"W	39.00'	470.00'	39.01'
C24	N47°25'39"E	35.61'	643.63'	35.62'
C25	N40°23'17"E	122.35'	643.63'	122.54'

CURVE TABLE CON'T				
CURVE	CHORD BEARING	CHORD LENGTH	RADIUS	CURVE LENGTH
C26	N32°43'03"E	49.78'	643.63'	49.80'
C27	N28°27'09"E	42.25'	591.00'	42.26'
C28	S68°32'50"W	13.42'	10.00'	14.71'
C29	S24°59'06"E	13.97'	10.00'	15.47'
C30	N14°56'21"E	90.69'	591.00'	90.78'
C31	N10°24'47"E	2.59'	591.00'	2.59'
C32	S60°23'05"W	15.34'	10.00'	17.49'
C33	S29°36'55"E	12.83'	10.00'	13.93'
C34	N10°03'02"E	5.21'	630.00'	5.21'
C48	N16°39'19"E	124.44'	561.00'	124.70'
C49	N26°45'44"E	73.17'	561.00'	73.22'
C50	N39°45'25"E	197.40'	613.63'	198.26'
C51	S46°24'31"W	45.44'	500.00'	45.45'
C52	(S31°08'36"W	219.18'	500.00'	220.98')R1



<p>REGISTERED PROFESSIONAL LAND SURVEYOR</p> <p><i>Larry E. Monrean</i></p> <p>OREGON JULY 13, 1979 LARRY E. MONREAN 1830</p> <p>EXPIRES: 12/31/2004</p>	<p>TAFT SUBDIVISION, PHASE 2</p> <p>LYING IN THE SE 1/4 OF SECTION 25 AND THE NE 1/4 SEC. 36, T26S, R6W, & THE NW 1/4 SEC. 31 AND SW 1/4 SEC. 30, T26S, R5W, W.M., DOUGLAS COUNTY, OREGON</p>	
	<p>SURVEYED FOR: L & H LUMBER COMPANY 859 W. LOOKINGGLASS RD. ROSEBURG, OREGON 97470</p>	<p>SURVEYED BY: i.e. ENGINEERING 741 SE Jackson Street Roseburg, Oregon 97470 PHONE (541) 673-0166 FAX (541) 440-9392 iemail@ieengineering.com</p>
SCALE: AS SHOWN	DATE: SEPT., 2004	DWG. BY: STH
JOB NO: 140-78		PAGE: 2 OF 4