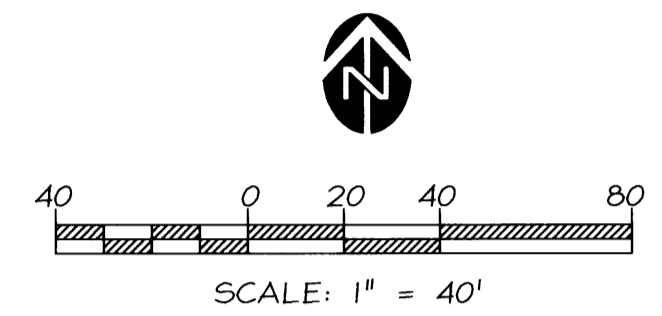
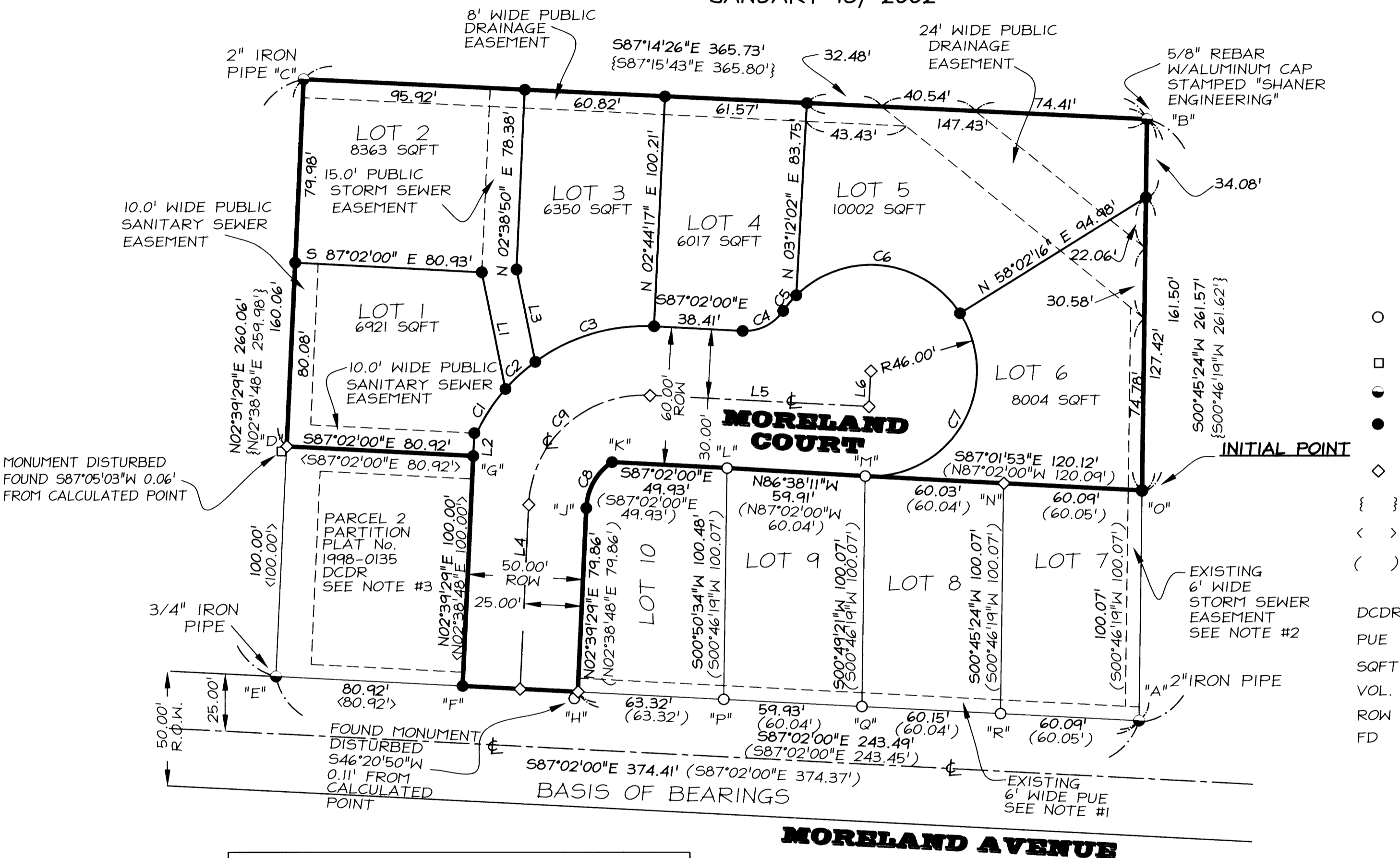


# HEDRICK CREEK ADDITION SUBDIVISION, PHASE II

IN THE N.E. 1/4 OF SEC. 17, T. 22 S., R. 5 W., W.M.,  
DRAIN, DOUGLAS COUNTY, OREGON  
JANUARY 18, 2002



### LEGEND

- FD 5/8" REBAR PER HEDRICK CREEK ADDITION SUBDIVISION VOLUME 20, PAGE 6 DCDR
- FD 5/8" REBAR PER PARTITION 1998-0135 DCDR
- FD MONUMENT AS FOUND ON M 107-54 A#B DCDR
- SET 5/8" X 30" REBAR WITH RED PLASTIC CAP MARKED " GEOMAX INC."
- ◇ CALCULATED POINT NO MONUMENT FOUND OR SET
- { } RECORD PER PARTITION BOOK 10, PAGE 116 DCDR
- < > RECORD PER PARTITION 1998-0135 DCDR
- ( ) RECORD PER HEDRICK CREEK ADDITION SUBDIVISION VOLUME 20, PAGE 6 DCDR
- DCDR DOUGLAS COUNTY DEEDS AND RECORDS
- PUE PUBLIC UTILITY EASEMENT
- SQFT SQUARE FEET
- VOL. VOLUME
- ROW RIGHT-OF-WAY
- FD FOUND

CURVE TABLE					
CURVE	LENGTH	RADIUS	DELTA	CHORD	BEARING
C1	25.90'	80.00'	18°33'05"	25.79'	S31°58'12"W
C2	17.54'	80.00'	12°33'37"	17.50'	S47°31'33"W
C3	54.76'	80.00'	39°13'20"	53.70'	S73°25'02"W
C4	20.45'	20.00'	58°34'44"	19.57'	N63°40'38"E
C5	8.90'	46.00'	11°05'23"	8.89'	S39°55'58"W
C6	81.61'	46.00'	101°39'22"	71.33'	N83°41'40"W
C7	101.06'	46.00'	125°52'45"	81.94'	N30°04'23"E
C8	23.79'	25.00'	54°31'45"	22.91'	S29°08'53"W
C9	78.81'	50.00'	90°18'31"	70.90'	S47°48'44"W

RECORD CURVE DATA HEDRICKS CREEK SUBDIVISION PHASE I VOL. 20, PAGE 6 DCDR					
CURVE	LENGTH	RADIUS	DELTA	CHORD	BEARING
C8	23.32'	25.00'	53°27'00"	22.49'	N29°22'18"E

LINE TABLE		
LINE	LENGTH	BEARING
L1	51.73'	S11°27'17"E
L2	7.42'	N02°39'29"E
L3	40.86'	S11°27'17"E
L4	80.15'	N02°39'29"E
L5	94.98'	S87°02'00"E
L6	15.59'	N02°58'00"E

REGISTERED  
PROFESSIONAL  
LAND SURVEYOR

*Carl J. Wells*  
OREGON  
JULY 25, 1990  
CARL J. WELLS  
2473  
RENEWAL 6-30-02

2002-16812

2002-16812

**Geomax**  
INC.

ENGINEERING, LAND SURVEYING, BUILDING DESIGN  
806 N. NINTH STREET, COTTAGE GROVE, OREGON 97424  
TELEPHONE: (541) 942-0126 FAX: (541) 942-7935  
E-MAIL: geomax@ibm.com