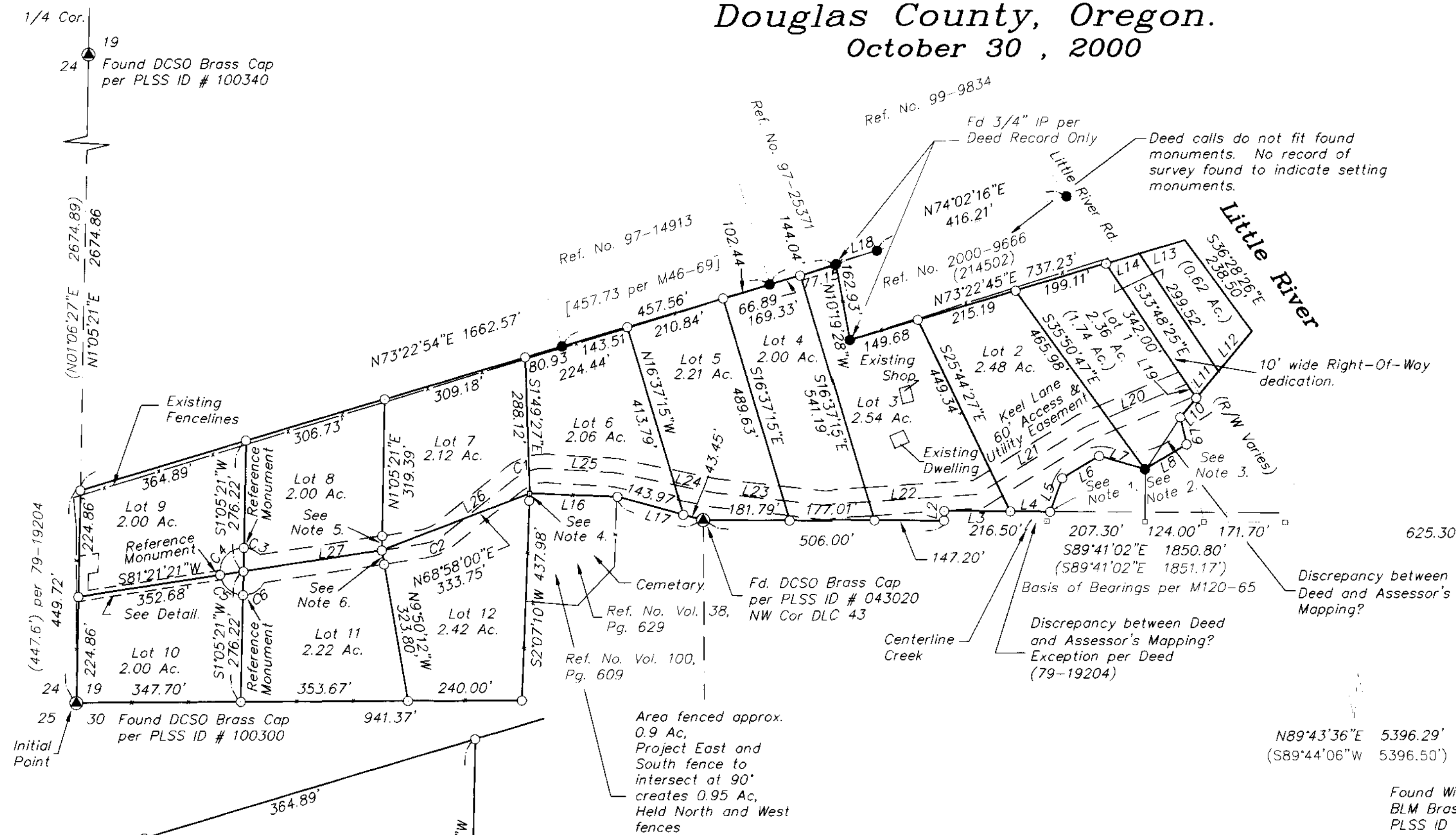


LITTLE RIVER ESTATES SUBDIVISION

Lying in the SW 1/4 Section 19,
Township 26 South, Range 3 West, W.M.
Douglas County, Oregon.
October 30, 2000



BOUNDARY & LOT TABLE

LINE TABLE		
LINE	LENGTH	BEARING
L2	20.00	N00°18'58"E
L3	139.60	S89°41'02"E
L4	84.06	S89°41'02"E
L5	74.76	N19°59'58"E
L6	90.80	N58°59'58"E
L7	100.45	S73°49'57"E
L8	102.18	N58°54'57"E
L9	58.56	N12°46'02"W
L10	52.74	N39°36'58"E
L11	73.04	N39°36'58"E
L12	111.24	N39°36'58"E
L13	99.98	S73°22'45"W
L14	73.27	S73°22'45"W
L16	185.42	N87°56'21"W
L17	187.42	N74°49'49"W
L18	90.94	N71°35'10"E

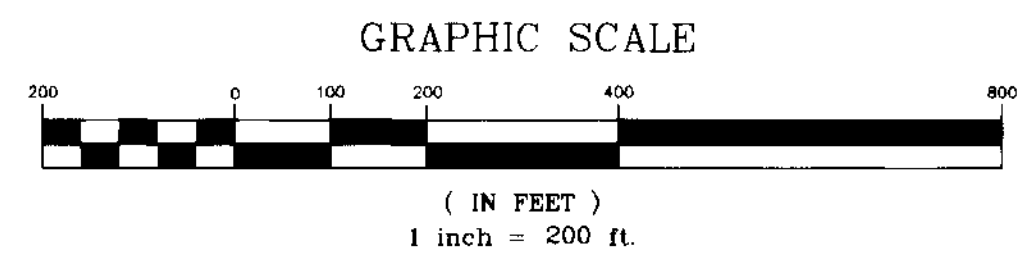
60.00' WIDE KEEL LANE EASEMENT TABLE

CURVE TABLE					LINE TABLE			
CURVE	RADIUS	DELTA	LENGTH	CHORD BEARING	CHORD LENGTH	LINE	LENGTH	BEARING
C1	100.00	42°13'08"	73.69	S72°29'31"W	72.03	L19	35.45	N33°48'25"W
C2	100.00	29°58'23"	52.31	N66°22'09"E	51.72	L20	233.78	S67°04'00"W
C3	50.00	43°23'48"	37.87	N67°12'45"W	36.97	L21	266.27	S57°47'54"W
C4	50.00	99°44'00"	87.03	S41°13'21"W	76.45	L22	322.13	S86°13'53"W
C5	50.00	80°16'00"	70.05	S48°46'39"E	64.46	L23	235.08	N83°33'56"W
C6	50.00	62°51'49"	54.86	N59°39'27"E	52.15	L24	209.61	N78°25'28"W
						L25	146.68	N86°23'55"W
						L26	187.54	S51°22'57"W
						L27	296.47	S81°21'21"W

C/L to Corner Tie

- LEGEND**
- Found 5/8" I.Rod unless otherwise noted.
 - ▲ Found ~~DCSO~~ Brass Cap
 - Calculated Point, No Monumentation.
 - Set 5/8" x 30" reinforcing rod with yellow plastic cap marked "LAND MARK PLS 2287".
- RECORD INFORMATION**
- () M120-65 by Kristian DeGroot
Deed Reference No. 79-19204

- NOTES**
1. Deed Reference No. 193775
 2. Deed Reference No. 179984
 3. Deed Reference No. 200749
 4. Set reference monument S2°07'10"W 5.00' from true corner.
 5. Set reference monument N1°05'21"E 30.44' from true corner.
 6. Set reference monument S9°50'12"E 30.01' from true corner.



SHEET 1 of 2

REGISTERED
PROFESSIONAL
LAND SURVEYOR

Mark A. Heimbürger

OREGON
JULY 16, 1987
MARK A. HEIMBURGER
2287

EXPIRES JUNE 30, 2001

Land Mark
SURVEYING & DEVELOPMENT

3329 N.E. Stephens Street
Roseburg, Oregon 97470
Tel (541) 677-9400
Fax (541) 677-9401

LMSJ Job No. 2000-0082