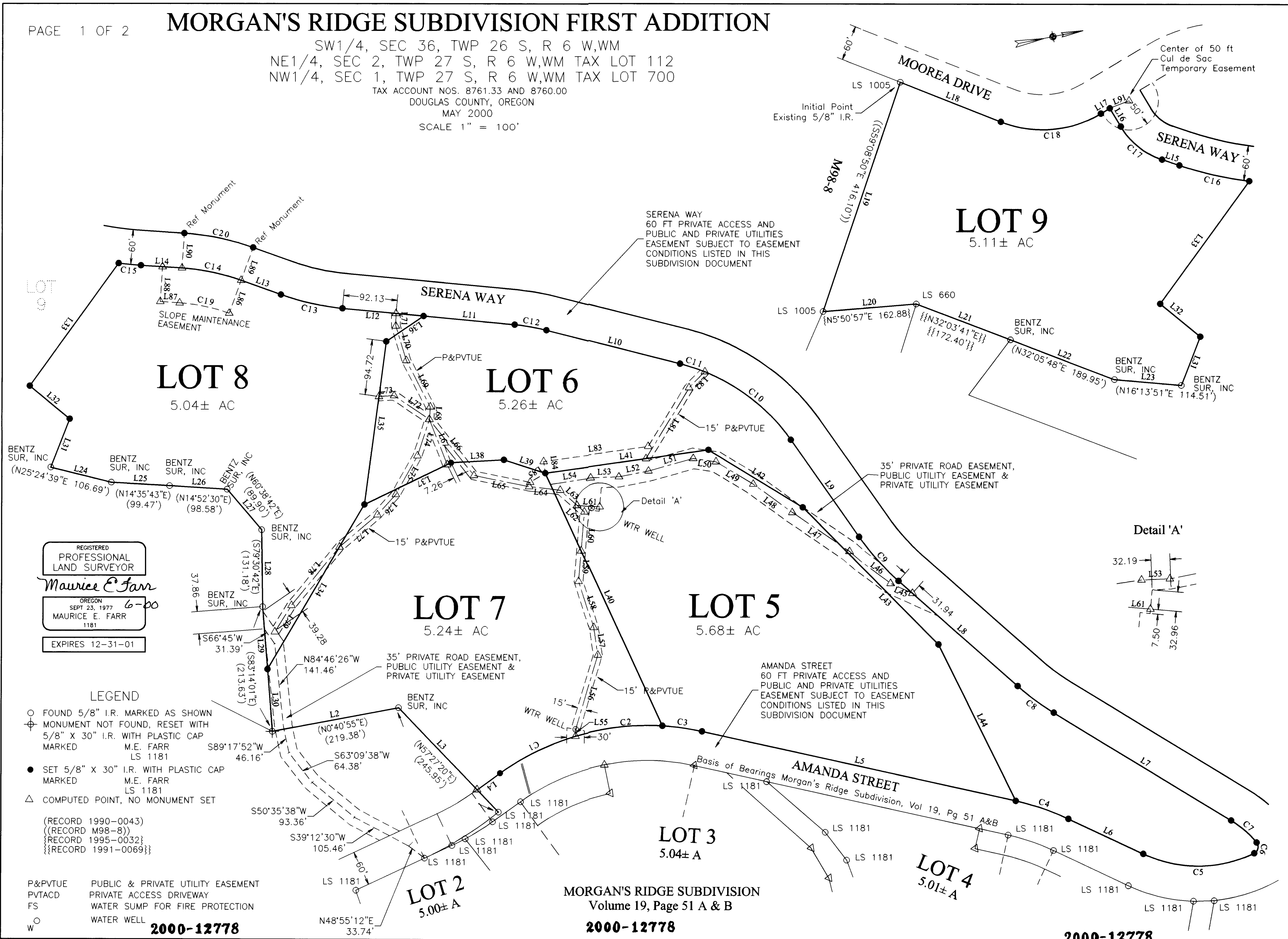


MORGAN'S RIDGE SUBDIVISION FIRST ADDITION

SW1/4, SEC 36, TWP 26 S, R 6 W, WM
 NE1/4, SEC 2, TWP 27 S, R 6 W, WM TAX LOT 112
 NW1/4, SEC 1, TWP 27 S, R 6 W, WM TAX LOT 700
 TAX ACCOUNT NOS. 8761.33 AND 8760.00
 DOUGLAS COUNTY, OREGON
 MAY 2000
 SCALE 1" = 100'



REGISTERED
 PROFESSIONAL
 LAND SURVEYOR
Maurice E. Farr
 OREGON
 SEPT 23, 1977
 MAURICE E. FARR
 1181
 6-00
 EXPIRES 12-31-01

LEGEND

- FOUND 5/8" I.R. MARKED AS SHOWN
- ⊕ MONUMENT NOT FOUND, RESET WITH 5/8" X 30" I.R. WITH PLASTIC CAP MARKED
- SET 5/8" X 30" I.R. WITH PLASTIC CAP MARKED
- △ COMPUTED POINT, NO MONUMENT SET

(RECORD 1990-0043)
 ((RECORD M98-8))
 {{RECORD 1995-0032}}
 {{{RECORD 1991-0069}}}

P&PVTUE PUBLIC & PRIVATE UTILITY EASEMENT
 PVTACD PRIVATE ACCESS DRIVEWAY
 FS WATER SUMP FOR FIRE PROTECTION
 W WATER WELL

2000-12778

MORGAN'S RIDGE SUBDIVISION
 Volume 19, Page 51 A & B
2000-12778

2000-12778