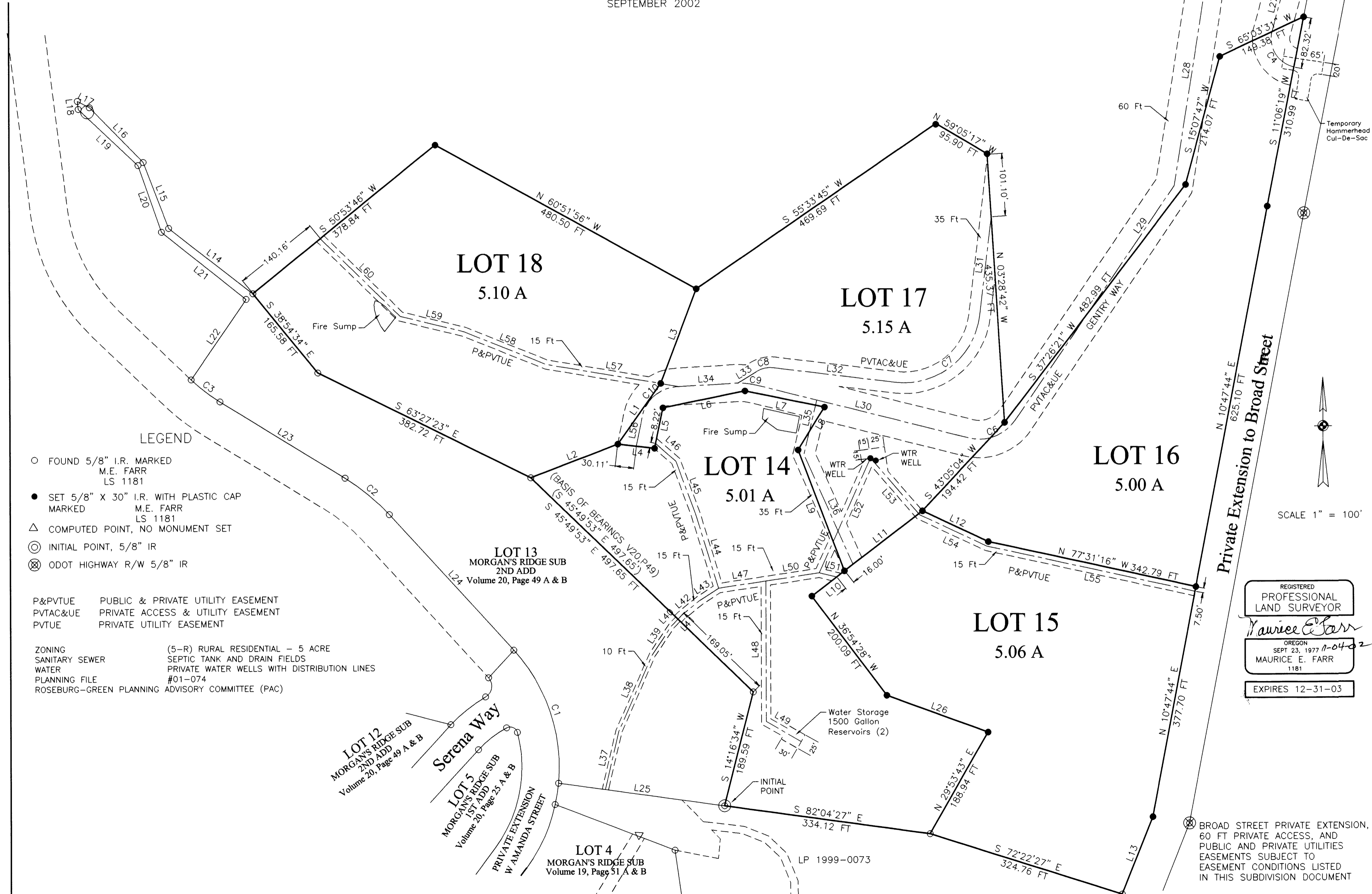


MORGAN'S RIDGE SUBDIVISION THIRD ADDITION

SW1/4, SEC 36, TWP 26 S, R 6 W, WM TAX LOT 309

TAX ACCOUNT NO. R55754
 DOUGLAS COUNTY, OREGON
 SEPTEMBER 2002



LEGEND

- FOUND 5/8" I.R. MARKED
M.E. FARR
LS 1181
- SET 5/8" X 30" I.R. WITH PLASTIC CAP
MARKED M.E. FARR
LS 1181
- △ COMPUTED POINT, NO MONUMENT SET
- ⊙ INITIAL POINT, 5/8" IR
- ⊗ ODOT HIGHWAY R/W 5/8" IR

P&PVTUE PUBLIC & PRIVATE UTILITY EASEMENT
 PVTAC&UE PRIVATE ACCESS & UTILITY EASEMENT
 PVTUE PRIVATE UTILITY EASEMENT

ZONING (5-R) RURAL RESIDENTIAL - 5 ACRE
 SANITARY SEWER SEPTIC TANK AND DRAIN FIELDS
 WATER PRIVATE WATER WELLS WITH DISTRIBUTION LINES
 PLANNING FILE #01-074
 ROSEBURG-GREEN PLANNING ADVISORY COMMITTEE (PAC)

REGISTERED
 PROFESSIONAL
 LAND SURVEYOR
Maurice E. Farr
 OREGON
 SEPT 23, 1977 11-04-02
 MAURICE E. FARR
 1181
 EXPIRES 12-31-03

⊗ BROAD STREET PRIVATE EXTENSION,
 60 FT PRIVATE ACCESS, AND
 PUBLIC AND PRIVATE UTILITIES
 EASEMENTS SUBJECT TO
 EASEMENT CONDITIONS LISTED
 IN THIS SUBDIVISION DOCUMENT