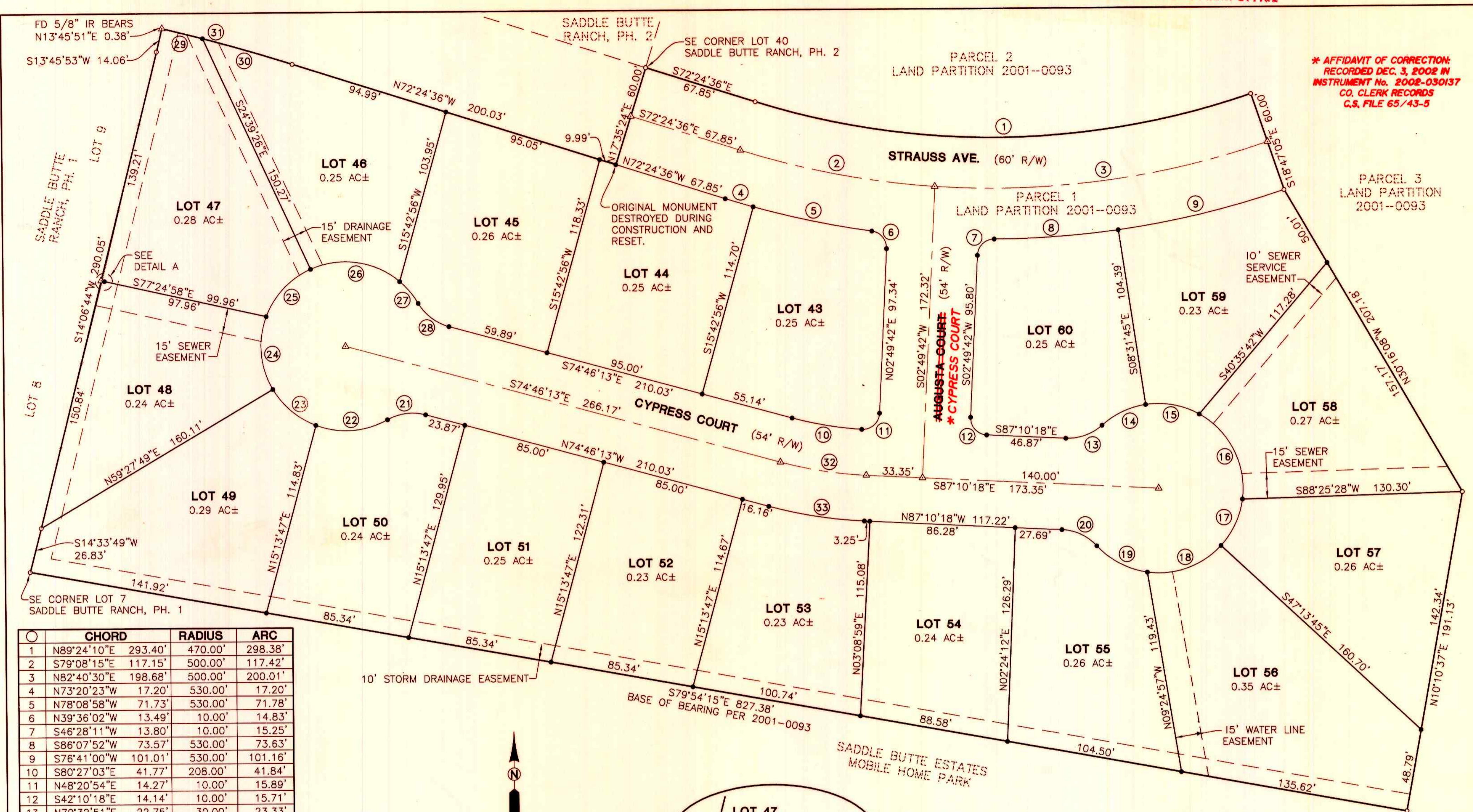
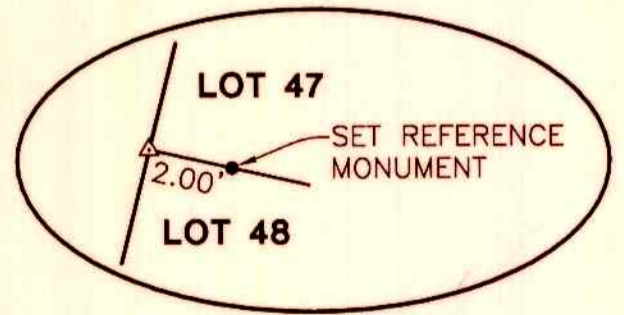


* AFFIDAVIT OF CORRECTION
RECORDED DEC. 3, 2002 IN
INSTRUMENT No. 2002-030137
CO. CLERK RECORDS
C.S. FILE 65/43-5



CHORD	RADIUS	ARC
1 N89°24'10"E 293.40'	470.00'	298.38'
2 S79°08'15"E 117.15'	500.00'	117.42'
3 N82°40'30"E 198.68'	500.00'	200.01'
4 N73°20'23"W 17.20'	530.00'	17.20'
5 N78°08'58"W 71.73'	530.00'	71.78'
6 N39°36'02"W 13.49'	10.00'	14.83'
7 S46°28'11"W 13.80'	10.00'	15.25'
8 S86°07'52"W 73.57'	530.00'	73.63'
9 S76°41'00"W 101.01'	530.00'	101.16'
10 S80°27'03"E 41.77'	208.00'	41.84'
11 N48°20'54"E 14.27'	10.00'	15.89'
12 S42°10'18"E 14.14'	10.00'	15.71'
13 N70°32'51"E 22.75'	30.00'	23.33'
14 N64°52'08"E 28.57'	50.00'	28.98'
15 S79°44'05"E 32.22'	50.00'	32.80'
16 S26°41'56"E 56.27'	50.00'	59.76'
17 S25°09'25"W 30.26'	50.00'	30.74'
18 S70°24'43"W 46.39'	50.00'	48.24'
19 N62°16'43"W 33.66'	50.00'	34.33'
20 N64°53'28"W 22.75'	30.00'	23.33'
21 S82°56'57"W 22.75'	30.00'	23.33'
22 S85°49'08"W 42.50'	50.00'	43.90'
23 N49°42'32"W 33.09'	50.00'	33.72'
24 N04°43'18"W 43.31'	50.00'	44.79'
25 N43°31'13"E 38.39'	50.00'	39.40'
26 S81°48'41"E 53.13'	50.00'	56.01'
27 S39°57'52"E 16.94'	50.00'	17.03'
28 S52°29'22"E 22.75'	30.00'	23.33'
29 N75°52'56"W 24.76'	1100.00'	24.76'
30 N73°48'10"W 55.07'	1100.00'	55.08'
31 S74°26'52"E 79.83'	1100.00'	79.84'
32 S80°58'15"E 51.41'	238.00'	51.51'
33 S80°58'15"E 57.25'	265.00'	57.36'

LEGEND
 • SET 5/8" x 30" IR w/CAP MARKED "I.E. ENG" UNLESS OTHERWISE NOTED
 ○ FOUND 5/8" IRON ROD UNLESS OTHERWISE NOTED
 ▲ CALCULATED POSITION



DETAIL A
SCALE: NTS

NOTE:
ALL BEARINGS AND DISTANCES ARE RECORD PER PARTITION 2001-0093, DOUGLAS COUNTY SURVEY RECORDS

ZONE: R-1
COMP. PLAN: LOW DENSITY RESIDENTIAL
WATER: CITY OF ROSEBURG
SEWER: R.U.S.A.

REGISTERED PROFESSIONAL LAND SURVEYOR OREGON JUNE 30, 1995 JERRY LEE ESTABROOK 2703 EXPIRES: 12/31/2003	SUBDIVISION SADDLE BUTTE RANCH, PHASE 3 LYING IN THE SW 1/4 OF SEC. 30, T26S, R5W, AND SE 1/4 OF SEC. 25, T26S, R6W, W.M., DOUGLAS COUNTY, OREGON	
	SURVEYED FOR: LANCE SHORT P.O. BOX 846 WINCHESTER, OR 97495	SURVEYED BY: DWG. BY: MLJ
SCALE: 1" = 40'	DATE: JUNE 2002	JOB NO: 152-29