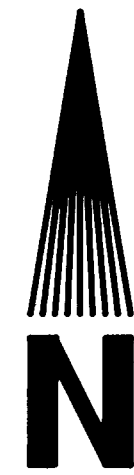


# HEDRICK CREEK ADDITION SUBDIVISION (PHASE 1)

REPLAT OF PARCEL 1, PARTITION PLAT 1998-0135  
NE1/4 SECTION 17, T22S, R5W, W.M.  
CITY OF DRAIN, DOUGLAS COUNTY, OREGON



SCALE: 1" = 30'  
APRIL 1, 1999

### LEGEND

- MONUMENTS FOUND: 5/8" IRON PINS WITH YELLOW PLASTIC CAPS STAMPED "ROBERTS SURV. INC." UNLESS OTHERWISE NOTED
- MONUMENTS SET: 5/8" X 30" IRON PINS WITH YELLOW PLASTIC CAPS STAMPED "ROBERTS SURV. INC."
- △ COMPUTED POINT
- ( ) DATA OF RECORD
- DENOTES LINE NOT TO SCALE

### REFERENCES

- 1) M 107-54A & 54B BY SHANER DATED JAN. 31, 1989
- 2) PARTITION PLAT 1998-0135 BY ROBERTS DATED DECEMBER 3, 1998.
- 3) BASIS OF BEARING - NORTH R/W LINE OF MORELAND AVENUE FROM SURVEY M107-54A

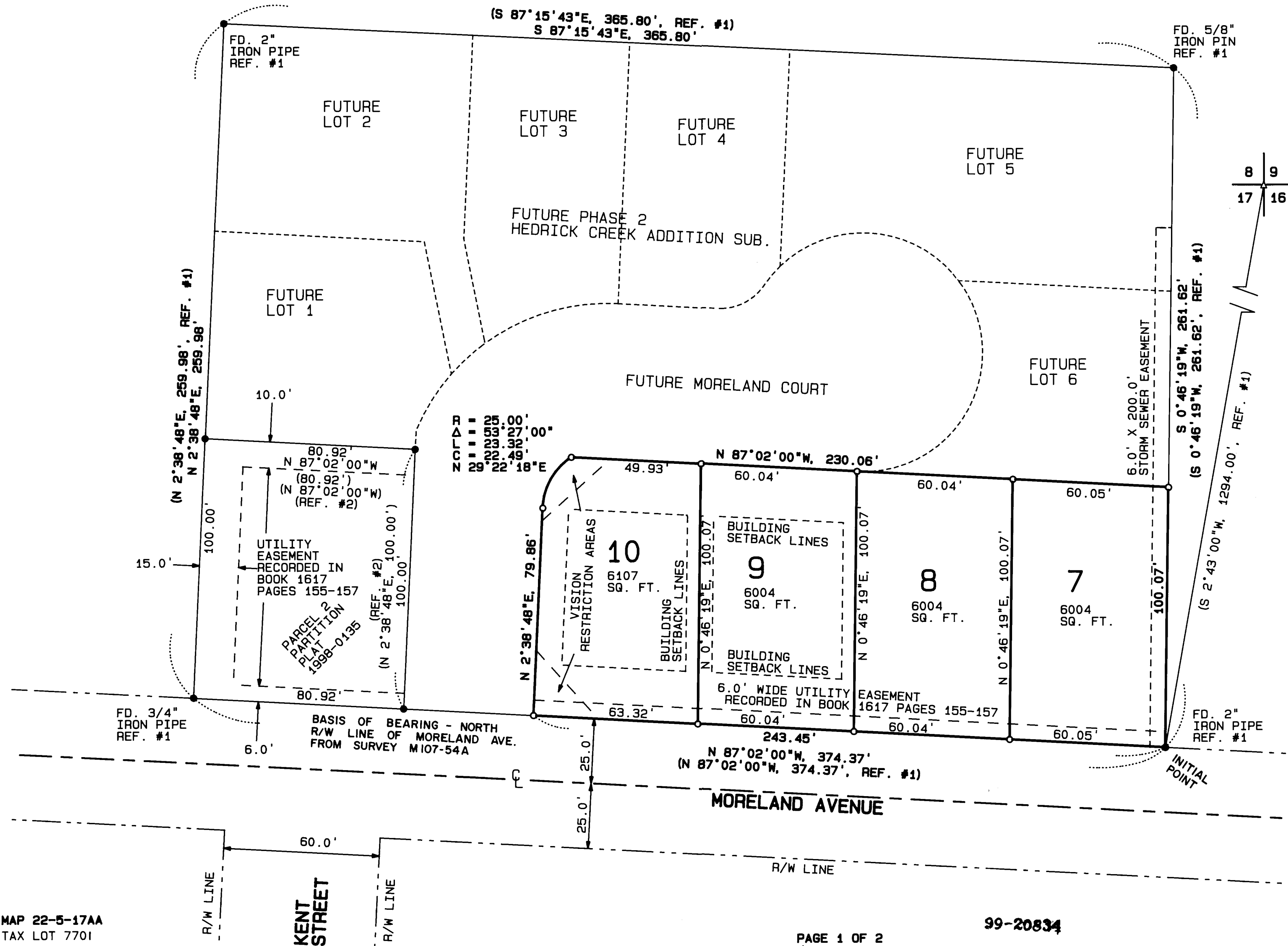
REGISTERED PROFESSIONAL LAND SURVEYOR

*Les Roberts*

OREGON  
AUGUST 22, 1975  
LES ROBERTS  
1039  
EXPIRES 12-31-2000

### NOTES

- 1) ALL EASEMENTS SHOWN ON THIS PLAT ARE DEDICATED TO THE PUBLIC.
- 2) SEE PAGE 2 FOR DETAIL OF VISUAL RESTRICTION AREAS AND BUILDING SETBACK LINES.
- 3) NO BUILDING, STRUCTURE, TREES, SHRUBBERY OR OTHER OBSTRUCTIONS SHALL BE PLACED ON OR IN A PUBLIC UTILITY EASEMENT.



MAP 22-5-17AA  
TAX LOT 7701

99-20834

PAGE 1 OF 2

99-20834

PREPARED BY  
ROBERTS SURVEYING INC.  
P.O. BOX 7155  
EUGENE, OREGON 97401  
PHONE (541) 345-1112

VOL. 20 PAGE 6 A

VOL. 20 PAGE 6 A

