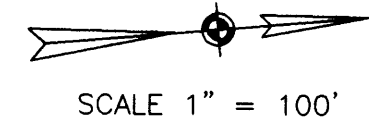
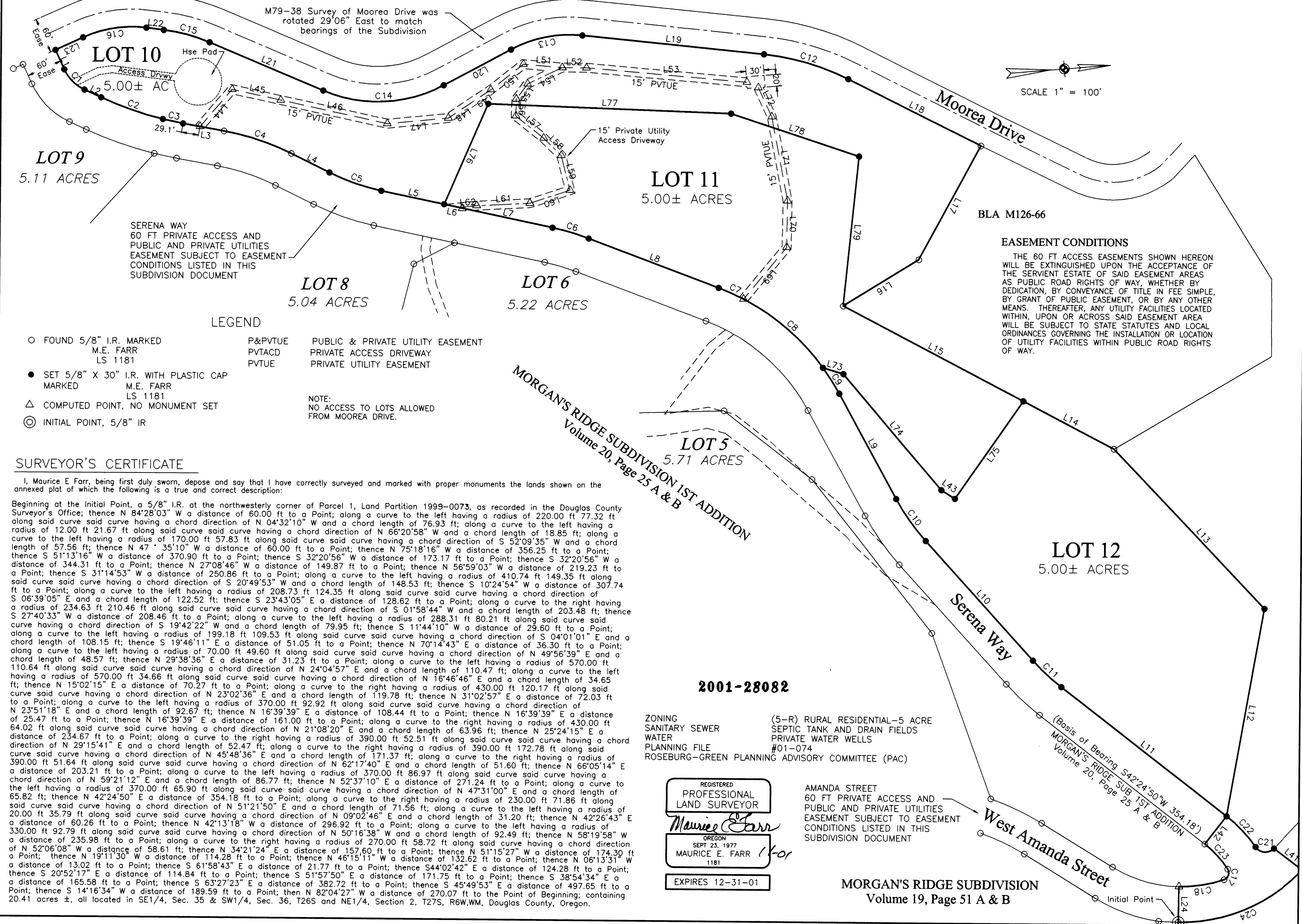


MORGAN'S RIDGE SUBDIVISION SECOND ADDITION



EASEMENT CONDITIONS

THE 60 FT ACCESS EASEMENTS SHOWN HEREON WILL BE EXTINGUISHED UPON THE ACCEPTANCE OF THE SERVIENT ESTATE OF SAID EASEMENT AREAS AS PUBLIC ROAD RIGHTS OF WAY, WHETHER BY DEDICATION, BY CONVEYANCE OF TITLE IN FEE SIMPLE, BY GRANT OF PUBLIC EASEMENT, OR BY ANY OTHER MEANS. THEREAFTER, ANY UTILITY FACILITIES LOCATED WITHIN, UPON OR ACROSS SAID EASEMENT AREA WILL BE SUBJECT TO STATE STATUTES AND LOCAL ORDINANCES GOVERNING THE INSTALLATION OR LOCATION OF UTILITY FACILITIES WITHIN PUBLIC ROAD RIGHTS OF WAY.

LEGEND

- FOUND 5/8" I.R. MARKED
M.E. FARR
LS 1181
 - SET 5/8" X 30" I.R. WITH PLASTIC CAP
MARKED
M.E. FARR
LS 1181
 - △ COMPUTED POINT, NO MONUMENT SET
 - ◎ INITIAL POINT, 5/8" IR
 - P&PVTUE PUBLIC & PRIVATE UTILITY EASEMENT
 - PVTACD PRIVATE ACCESS DRIVEWAY
 - PVTUE PRIVATE UTILITY EASEMENT
- NOTE:
NO ACCESS TO LOTS ALLOWED FROM MOOREA DRIVE.

SURVEYOR'S CERTIFICATE

I, Maurice E Farr, being first duly sworn, depose and say that I have correctly surveyed and marked with proper monuments the lands shown on the annexed plat of which the following is a true and correct description:

Beginning at the Initial Point, a 5/8" I.R. at the northwesterly corner of Parcel 1, Land Partition 1999-0073, as recorded in the Douglas County Surveyor's Office; thence N 84°28'03" W a distance of 60.00 ft to a Point; along a curve to the left having a radius of 220.00 ft 77.32 ft along said curve said curve having a chord direction of N 04°32'10" W and a chord length of 76.93 ft; along a curve to the left having a radius of 12.00 ft 21.67 ft along said curve said curve having a chord direction of N 66°20'58" W and a chord length of 18.85 ft; along a curve to the left having a radius of 170.00 ft 57.83 ft along said curve said curve having a chord direction of S 52°09'35" W and a chord length of 57.56 ft; thence N 47° 35'10" W a distance of 60.00 ft to a Point; thence N 75°18'16" W a distance of 356.25 ft to a Point; thence S 51°13'16" W a distance of 370.90 ft to a Point; thence S 32°20'56" W a distance of 173.17 ft to a Point; thence S 32°20'56" W a distance of 344.31 ft to a Point; thence N 27°08'46" W a distance of 149.87 ft to a Point; thence N 56°59'03" W a distance of 219.23 ft to a Point; thence S 31°14'53" W a distance of 250.86 ft to a Point; along a curve to the left having a radius of 410.74 ft 149.35 ft along said curve said curve having a chord direction of S 20°49'53" W and a chord length of 148.53 ft; thence S 10°24'54" W a distance of 307.74 ft to a Point; along a curve to the left having a radius of 208.73 ft 124.35 ft along said curve said curve having a chord direction of S 06°39'05" E and a chord length of 122.52 ft; thence S 23°43'05" E a distance of 128.62 ft to a Point; along a curve to the right having a radius of 234.63 ft 210.46 ft along said curve said curve having a chord direction of S 01°58'44" W and a chord length of 203.48 ft; thence S 27°40'33" W a distance of 208.46 ft to a Point; along a curve to the left having a radius of 288.31 ft 80.21 ft along said curve said curve having a chord direction of S 19°42'22" W and a chord length of 79.95 ft; thence S 11°44'10" W a distance of 29.60 ft to a Point; along a curve to the left having a radius of 199.18 ft 109.53 ft along said curve said curve having a chord direction of S 04°01'01" E and a chord length of 108.15 ft; thence S 19°46'11" E a distance of 51.05 ft to a Point; thence N 70°14'43" E a distance of 36.30 ft to a Point; along a curve to the left having a radius of 70.00 ft 49.60 ft along said curve said curve having a chord direction of N 49°56'39" E and a chord length of 48.57 ft; thence N 29°38'36" E a distance of 31.23 ft to a Point; along a curve to the left having a radius of 570.00 ft 110.64 ft along said curve said curve having a chord direction of N 24°04'57" E and a chord length of 110.47 ft; along a curve to the left having a radius of 570.00 ft 34.66 ft along said curve said curve having a chord direction of N 16°46'46" E and a chord length of 34.65 ft; thence N 15°02'15" E a distance of 70.27 ft to a Point; along a curve to the right having a radius of 430.00 ft 120.17 ft along said curve said curve having a chord direction of N 23°02'36" E and a chord length of 119.78 ft; thence N 31°02'57" E a distance of 72.03 ft to a Point; along a curve to the left having a radius of 370.00 ft 92.92 ft along said curve said curve having a chord direction of N 23°51'18" E and a chord length of 92.67 ft; thence N 16°39'39" E a distance of 108.44 ft to a Point; thence N 16°39'39" E a distance of 25.47 ft to a Point; thence N 16°39'39" E a distance of 161.00 ft to a Point; along a curve to the right having a radius of 430.00 ft 64.02 ft along said curve said curve having a chord direction of N 21°08'20" E and a chord length of 63.96 ft; thence N 25°24'15" E a distance of 234.67 ft to a Point; along a curve to the right having a radius of 390.00 ft 52.51 ft along said curve said curve having a chord direction of N 29°15'41" E and a chord length of 52.47 ft; along a curve to the right having a radius of 390.00 ft 172.78 ft along said curve said curve having a chord direction of N 45°48'36" E and a chord length of 171.37 ft; along a curve to the right having a radius of 390.00 ft 51.64 ft along said curve said curve having a chord direction of N 62°17'40" E and a chord length of 51.60 ft; thence N 66°05'14" E a distance of 203.21 ft to a Point; along a curve to the left having a radius of 370.00 ft 86.97 ft along said curve said curve having a chord direction of N 59°21'12" E and a chord length of 86.77 ft; thence N 52°37'10" E a distance of 271.24 ft to a Point; along a curve to the left having a radius of 370.00 ft 65.90 ft along said curve said curve having a chord direction of N 47°31'00" E and a chord length of 65.82 ft; thence N 42°24'50" E a distance of 354.18 ft to a Point; along a curve to the right having a radius of 230.00 ft 71.86 ft along said curve said curve having a chord direction of N 51°21'50" E and a chord length of 71.56 ft; along a curve to the left having a radius of 20.00 ft 35.79 ft along said curve said curve having a chord direction of N 09°02'46" E and a chord length of 31.20 ft; thence N 42°26'43" E a distance of 60.26 ft to a Point; thence N 42°13'18" W a distance of 296.92 ft to a Point; along a curve to the left having a radius of 330.00 ft 92.79 ft along said curve said curve having a chord direction of N 50°16'38" W and a chord length of 92.49 ft; thence N 58°19'58" W a distance of 235.98 ft to a Point; along a curve to the right having a radius of 270.00 ft 58.72 ft along said curve having a chord direction of N 52°06'08" W a distance of 58.61 ft; thence N 34°21'24" E a distance of 157.60 ft to a Point; thence N 51°15'27" W a distance of 174.30 ft to a Point; thence N 19°11'30" W a distance of 114.28 ft to a Point; thence N 46°15'11" W a distance of 132.62 ft to a Point; thence N 06°13'31" W a distance of 13.02 ft to a Point; thence S 61°58'43" E a distance of 21.77 ft to a Point; thence S44°02'42" E a distance of 124.28 ft to a Point; thence S 20°52'17" E a distance of 114.84 ft to a Point; thence S 51°57'50" E a distance of 171.75 ft to a Point; thence S 38°54'34" E a distance of 165.58 ft to a Point; thence S 63°27'23" E a distance of 382.72 ft to a Point; thence S 45°49'53" E a distance of 497.65 ft to a Point; thence S 14°16'34" W a distance of 189.59 ft to a Point; then N 82°04'27" W a distance of 270.07 ft to the Point of Beginning; containing 20.41 acres ±, all located in SE1/4, Sec. 35 & SW1/4, Sec. 36, T26S and NE1/4, Section 2, T27S, R6W,WM, Douglas County, Oregon.

MORGAN'S RIDGE SUBDIVISION 1ST ADDITION
Volume 20, Page 25 A & B

2001-28082

ZONING (5-R) RURAL RESIDENTIAL-5 ACRE
SANITARY SEWER SEPTIC TANK AND DRAIN FIELDS
WATER PRIVATE WATER WELLS
PLANNING FILE #01-074
ROSEBURG-GREEN PLANNING ADVISORY COMMITTEE (PAC)

REGISTERED PROFESSIONAL LAND SURVEYOR
Maurice E Farr
OREGON
SEPT 23, 1977
MAURICE E. FARR
1181
EXPIRES 12-31-01

AMANDA STREET
60 FT PRIVATE ACCESS AND PUBLIC AND PRIVATE UTILITIES EASEMENT SUBJECT TO EASEMENT CONDITIONS LISTED IN THIS SUBDIVISION DOCUMENT

MORGAN'S RIDGE SUBDIVISION
Volume 19, Page 51 A & B

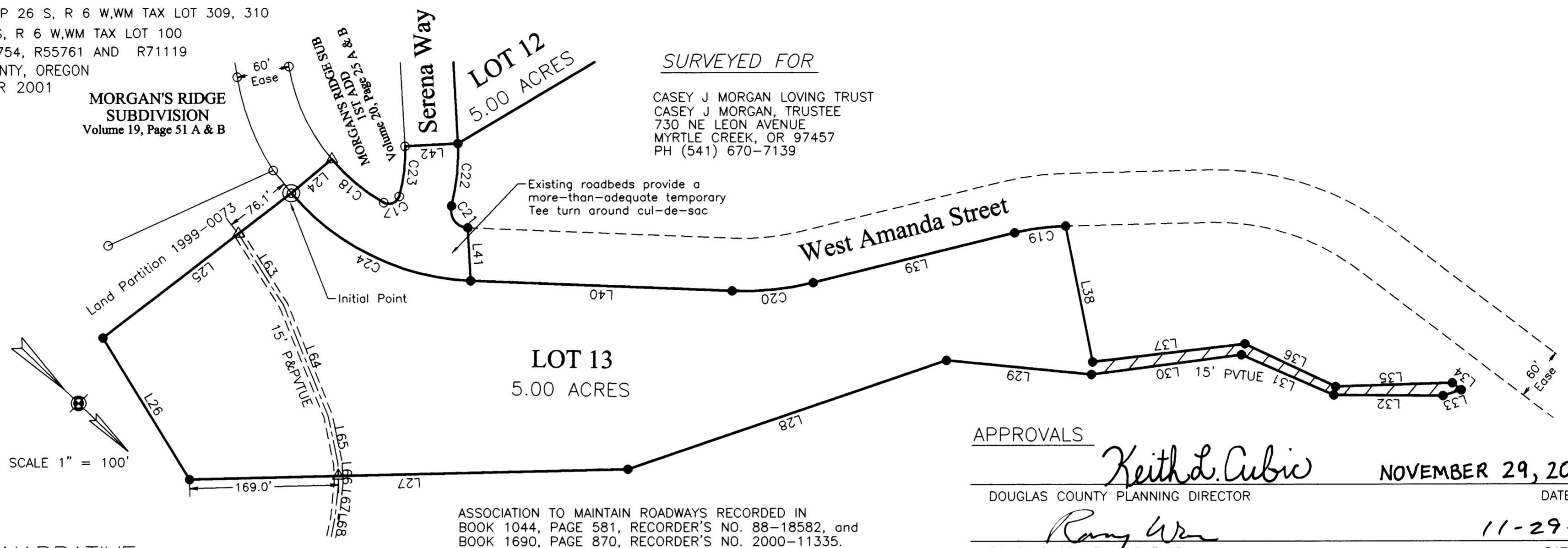
MORGAN'S RIDGE SUBDIVISION SECOND ADDITION

SHEET 2 OF 2

SE1/4, SEC 35 & SW1/4, SEC 36, TWP 26 S, R 6 W, WM TAX LOT 309, 310
 NE1/4, SEC 2, TWP 27 S, R 6 W, WM TAX LOT 100
 TAX ACCOUNT NOS. R55754, R55761 AND R71119
 DOUGLAS COUNTY, OREGON
 NOVEMBER 2001

NO.	DIRECTION	DIST
L1	S 70°14'43" W	36.30'
L2	S 29°38'36" W	31.23'
L3	S 15°02'15" W	70.27'
L4	S 31°02'57" W	72.03'
L5	S 16°39'39" W	108.44'
L6	S 16°39'39" W	25.47'
L7	S 16°39'39" W	161.00'
L8	S 25°24'15" W	234.67'
L9	S 66°05'14" W	203.21'
L10	S 52°37'10" W	271.24'
L11	S 42°24'50" W	354.18'
L12	N 75°18'16" W	356.25'
L13	S 51°13'16" W	370.90'
L14	N 32°20'56" E	173.17'
L15	N 32°20'56" E	344.31'
L16	S 27°08'46" E	149.87'
L17	S 56°59'03" E	219.23'
L18	N 31°14'53" E	250.86'
L19	N 10°24'54" E	307.74'
L20	N 23°43'05" W	128.62'
L21	N 27°40'33" E	208.46'
L22	N 11°44'10" E	29.60'
L23	N 19°46'11" W	51.05'
L24	N 84°28'03" W	60.00'
L25	S 82°04'27" E	270.07'
L26	N 14°16'34" E	189.59'
L27	N 45°49'53" W	497.65'
L28	N 63°27'23" W	382.72'
L29	N 38°54'34" W	165.58'
L30	N 51°57'50" W	171.75'
L31	N 20°52'17" W	114.84'
L32	N 44°02'42" W	124.28'
L33	N 61°58'43" W	21.77'
L34	S 06°13'31" E	13.02'
L35	S 46°15'11" E	132.62'
L36	S 19°11'30" E	114.28'
L37	S 51°15'27" E	174.30'
L38	S 34°21'24" W	157.60'
L39	S 58°19'58" E	235.98'
L40	S 42°13'18" E	296.92'
L41	N 42°26'43" E	60.26'
L42	S 47°35'10" E	60.00'
L43	N 37°12'21" E	27.00'
L44	N 44°54'52" W	83.12'
L45	N 16°58'51" E	83.95'
L46	N 17°03'36" E	184.22'
L47	N 00°48'49" W	103.33'
L48	N 29°37'11" W	47.08'
L49	N 28°54'59" W	39.06'
L50	N 33°56'51" W	70.07'
L51	N 09°32'57" E	65.73'
L52	N 04°53'44" E	40.93'
L53	N 09°40'33" E	271.45'
L54	S 20°51'41" E	64.68'
L55	S 49°23'36" E	32.17'
L56	S 83°57'14" E	28.33'
L57	N 43°08'43" E	60.07'
L58	N 49°31'57" E	41.94'
L59	N 80°27'57" E	60.30'
L60	S 13°33'07" E	71.07'
L61	S 01°45'55" W	89.77'
L62	S 01°08'37" E	29.77'
L63	N 13°16'28" E	96.86'
L64	N 23°40'08" E	134.85'
L65	N 33°51'01" E	56.32'
L66	N 44°02'56" E	22.42'
L67	N 51°00'31" E	38.51'
L68	N 56°56'15" E	22.87'
L69	N 45°55'23" W	114.07'

MORGAN'S RIDGE SUBDIVISION
 Volume 19, Page 51 A & B



SURVEYED FOR
 CASEY J MORGAN LOVING TRUST
 CASEY J MORGAN, TRUSTEE
 730 NE LEON AVENUE
 MYRTLE CREEK, OR 97457
 PH (541) 670-7139

ASSOCIATION TO MAINTAIN ROADWAYS RECORDED IN
 BOOK 1044, PAGE 581, RECORDER'S NO. 88-18582, and
 BOOK 1690, PAGE 870, RECORDER'S NO. 2000-11335.

NARRATIVE:

THIS IS A SURVEY TO CREATE A FOUR LOT SUBDIVISION FROM A PORTION OF THAT PROPERTY DESCRIBED IN INSTRUMENT #84-08706, AS RECORDED IN THE DEED RECORDS OF DOUGLAS COUNTY, OREGON. WE USED FOUND MONUMENTS FROM SURVEYS M79-38 AND M126-66 TO CONTROL THE WESTERLY BOUNDARY AND FOUND MONUMENTS FROM LAND PARTITION 1999-0073 AND MORGAN'S RIDGE SUBDIVISION, 1ST ADDITION, V20,P25 TO CONTROL THE EASTERLY BOUNDARY.

THE SURVEY WAS COMPLETED BY MAURICE E FARR, RICHARD M GARZA, JR AND KIP MORGAN USING A NIKON DTM-520 TOTAL STATION. COMPUTATIONS AND DRAFTING WAS PERFORMED BY MAURICE E FARR.

L70	N 84°29'00" W	78.53'
L71	S 83°50'11" W	144.86'
L72	S 69°47'13" W	54.23'
L73	N 21°34'05" E	36.23'
L74	N 54°21'15" E	257.08'
L75	N 50°37'20" W	201.69'
L76	N 61°53'02" W	185.54'
L77	N 06°47'08" E	409.60'
L78	N 23°03'05" E	228.07'
L79	S 79°28'58" E	254.37'

REGISTERED
 PROFESSIONAL
 LAND SURVEYOR

Maurice E Farr
 OREGON
 SEPT 23, 1977
 MAURICE E. FARR
 1181

EXPIRES 12-31-01

SURVEYED BY

Maurice E Farr
 MAURICE E. FARR
 PROFESSIONAL LAND SURVEYOR
 395 NE KIRBY AVENUE
 ROSEBURG, OR 97470
 PH (541) 957-9442

STATE OF OREGON }
 COUNTY OF DOUGLAS } ss
 I, DOYLE SHAVER JR., COUNTY CLERK AND
 RECORDER OF CONVEYANCES, DO HEREBY CERTIFY
 THAT THIS INSTRUMENT WAS RECORDED

01 DEC -4 AM 8:20

DOYLE SHAVER JR.
 DOUGLAS COUNTY CLERK
 IN THE OFFICIAL RECORDS OF DOUGLAS COUNTY

ACKNOWLEDGMENT

STATE OF OREGON }
 COUNTY OF DOUGLAS } ss

KNOW ALL PEOPLE BY THESE PRESENTS, ON THIS 26 DAY
 OF November 2001, BEFORE ME, A NOTARY PUBLIC IN
 AND FOR SAID STATE AND COUNTY, PERSONALLY APPEARED CASEY
 J MORGAN, TRUSTEE, CASEY J MORGAN LOVING TRUST, WHO DID
 SAY THAT HE IS THE IDENTICAL PERSON NAMED IN THE FOREGOING
 INSTRUMENT AND THAT HE EXECUTED SAID INSTRUMENT FREELY
 AND VOLUNTARILY.

IN TESTIMONY WHEREOF, I HAVE HEREUNTO SET MY HAND AND
 AFFIXED MY OFFICIAL SEAL THIS DAY AND YEAR FIRST ABOVE
 WRITTEN.

Nancy A. Winchell
 NOTARY PUBLIC OF OREGON
 MY COMMISSION EXPIRES:



2001-28082

APPROVALS

Keith L. Cubic NOVEMBER 29, 2001
 DOUGLAS COUNTY PLANNING DIRECTOR DATE

Randy Wren 11-29-01
 DOUGLAS COUNTY SURVEYOR DATE

Ken Northrup 12-03-01
 DOUGLAS COUNTY ASSESSOR DATE

Casey Morgan 12/3/01
 DOUGLAS COUNTY COMMISSIONER DATE

Doug Peterson 12-3-01
 DOUGLAS COUNTY COMMISSIONER DATE

Sandra K. Coress 12/3/01
 DOUGLAS COUNTY TAX COLLECTOR DATE

FILED THIS 4th DAY OF December, 2001, 8:20 O'CLOCK AM



DOYLE SHAVER JR.,
 DOUGLAS COUNTY CLERK
Ray Carlenges, Deputy

DECLARATION

KNOW ALL MEN BY THESE PRESENTS, THAT I, CASEY J. MORGAN, TRUSTEE FOR
 CASEY J MORGAN LOVING TRUST WHICH IS THE OWNER OF THE LAND REPRESENTED
 HEREON AND MORE PARTICULARLY DESCRIBED HEREIN AND HAVE CAUSED THE SAME
 TO BE SURVEYED AND SUBDIVIDED INTO LOTS AS SHOWN ON THIS MAP, AND HEREBY
 CREATE THE EASEMENTS AND PUBLIC UTILITY EASEMENTS SHOWN HEREON.

Casey J. Morgan
 CASEY J MORGAN, TRUSTEE

2001-28082

VOL. 20 PAGE 49 B

VOL. 20 PAGE 49 B