

Basis of bearings is south line of subdivision.

Well

Assembly of God of Roseburg Property  
Inst. No. 99-14153  
N42°54'13"E, 1,024.48  
(Record, N43°00'00"E, 1,024.45)  
(Urban Growth Boundary Line)

Broad Street & Curve A  
Δ = 17°35'57" (Record, 17°33'35")  
D = 11°27'33"  
R = 500.00  
L = 153.58 (Record, 153.24)  
LC = N11°04'20"E, 152.98  
(Record, N11°08'45"E, 152.64)

I-5 R/W Curve  
Δ = 2°46'01"  
D = 0°29'29"  
R = 11,659.16  
L = 563.09 (Record, 561.91)  
LC = S4°02'50"W, 563.00  
(Record, S4°08'27"W, 561.86)

LEGEND

- Corner found, 5/8" iron rod ○
- Corner set, 5/8"x30" iron rod with aluminum cap mkd. "Shaner Engr. RLS 430" ●
- Corner computed, not set ◦
- 10.0 ft. wide well pipeline easement —W—

REGISTERED PROFESSIONAL LAND SURVEYOR

*Bruce A. Shaner*

OREGON  
OCT. 4, 1957  
BRUCE A. SHANER  
430

Renews June 30, 2000

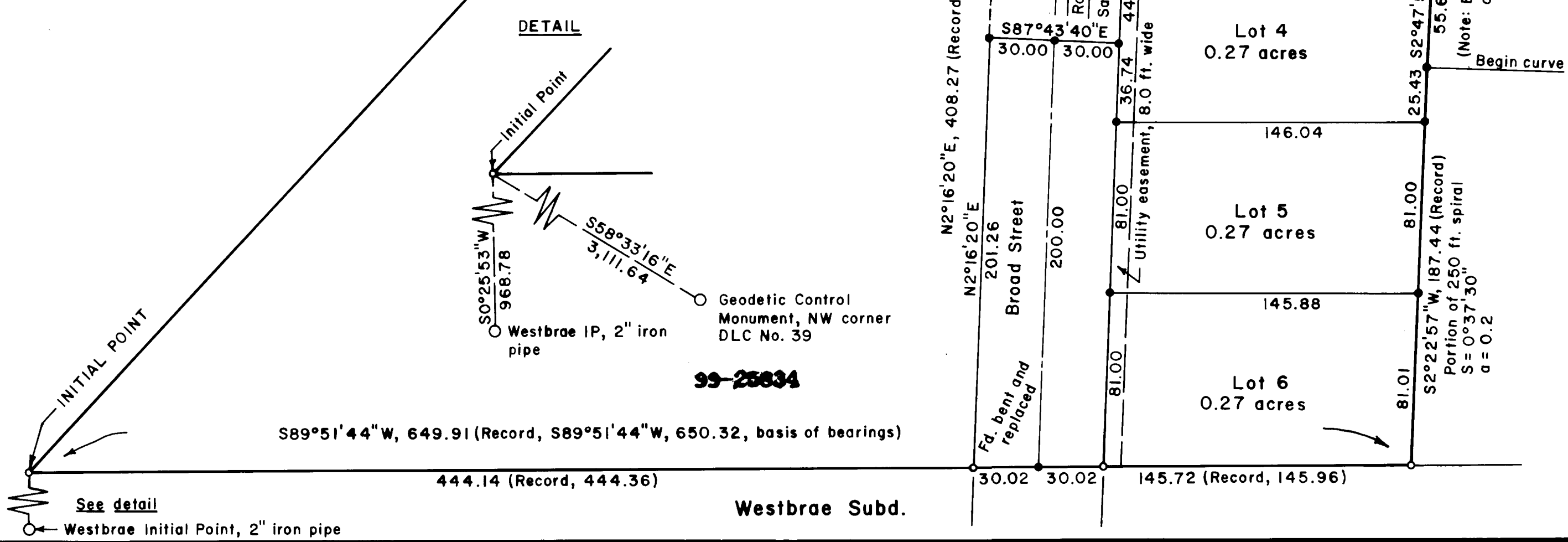
99-25834

GRACE & PEACE SUBDIVISION  
in the NW 1/4 of Section 1, T27S, R6W, W.M.,  
Douglas County, Oregon

For: Roseburg Assembly of God  
518 NE Nash Street  
Roseburg, Oregon 97470

By: Shaner Engineering, Inc.  
P.O. Box 1430  
Roseburg, Oregon 97470

September 27, 1999



S89°51'44"W, 649.91 (Record, S89°51'44"W, 650.32, basis of bearings)

444.14 (Record, 444.36)

Westbrae Subd.

N2°16'20"E, 408.27 (Record, N2°22'00"E, 407.73)

N2°16'20"E, 201.26

30.02 30.02

145.72 (Record, 145.96)

Private road  
Road easement for Lots 2 & 3 (25.0 ft.)  
San. sewer easement (15.0 ft.)

81.00 81.00

36.74 44.26

81.00 81.00

35.74 44.26

81.00 81.00

35.74 44.26

81.00 81.00

35.74 44.26

81.00 81.00

35.74 44.26

81.00 81.00

35.74 44.26

81.00 81.00

35.74 44.26

81.00 81.00

35.74 44.26

81.00 81.00

35.74 44.26

81.00 81.00

35.74 44.26

81.00 81.00

35.74 44.26

81.00 81.00

35.74 44.26