

SEE SHEET 7

LOT 40

N33°05'55"E
9.40'

N13°05'E
12.06'

N35°45'23"E
64.52'

N53°33'12"E
103.60'

35' WIDE ACCESS
AND UTILITY EASEMENT
TO BENEFIT WATER TANK LOT
& LOT 37 - ALSO REPLACES
ROADWAY EASEMENT DESCRIBED
IN INST. NO. 72-8509,
DEED RECORDS

10' WIDE
UTILITY EASEMENT
TO BENEFIT LOT 40

EASEMENT TO BENEFIT
UMPQUA BASIN WATER ASSOC.
FOR PLACEMENT OF ANTENNA &
OTHER IMPROVEMENTS

GEM DRIVE
(ROADWAY AND UTILITY EASEMENT)

LOT 34

SEE SHEET 10

EAGLE DRIVE

559°35'50"W 157.89'

S24°4'E
20.00'

S24°4'E
20.00'

S24°4'E
20.00'

S24°4'E
20.00'

S24°4'E
20.00'

S24°4'E
20.00'

S24°4'E
20.00'

S24°4'E
20.00'

S24°4'E
20.00'

S24°4'E
20.00'

S24°4'E
20.00'

S24°4'E
20.00'

S24°4'E
20.00'

S24°4'E
20.00'

S24°4'E
20.00'

S24°4'E
20.00'

S24°4'E
20.00'

S24°4'E
20.00'

S24°4'E
20.00'

S24°4'E
20.00'

S24°4'E
20.00'

S24°4'E
20.00'

S24°4'E
20.00'

S24°4'E
20.00'

S24°4'E
20.00'

S24°4'E
20.00'

S24°4'E
20.00'

S24°4'E
20.00'

S24°4'E
20.00'

S24°4'E
20.00'

S24°4'E
20.00'

S24°4'E
20.00'

S24°4'E
20.00'

S24°4'E
20.00'

S24°4'E
20.00'

S24°4'E
20.00'

S24°4'E
20.00'

S24°4'E
20.00'

S24°4'E
20.00'

S24°4'E
20.00'

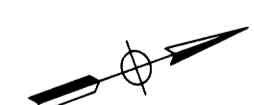
S24°4'E
20.00'

S24°4'E
20.00'

LEGEND:
● SET 3/8" x 30" I.R.
w/CAP MKD "i.e. ENG."
○ FD 3/8" I.R.
UNLESS OTHERWISE NOTED

--- LINES REPRESENT
AREA OF SEPTIC
DRAINFIELD FOR LOT
OCCUPIED UNLESS NOTED
OTHERWISE

COUNTY SURVEYORS FILE DATA
DO NOT REMOVE FROM OFFICE



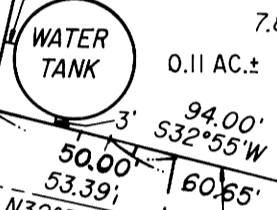
SEE SHEET 7

15' WIDE
UTILITY EASEMENT

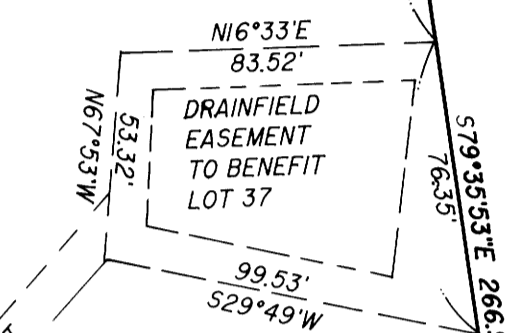
EXISTING 15' WIDE
UTILITY EASEMENT
(UNRECORDED)

LOT 37
5.42 AC.±

UMPQUA BASIN WATER
ASSOC. TANK SITE
(TO CORRECT DEED DESCRIPTION
RECORDED IN BOOK 495, PAGE 978)
(INST. NO. 72-8509)
EXISTING WATER TANK
LOCATION USED TO
ESTABLISH ADJUSTED
PERIMETER w/AGREEMENT
FROM UMPQUA BASIN WATER ASSOC.



LOT 35



15' WIDE
UTILITY EASEMENT

REGISTERED
OREGON
LAND SURVEYOR

JULY 12, 1968
DONALD A. BENTZ
839

EXPIRES 12-31-97

DIAMOND HEIGHTS SUBDIVISION
5th ADDITION
IN THE SE1/4 OF SEC. 20, NW1/4 OF SEC. 28
AND THE NE1/4 & NW1/4 OF SEC. 29, T29S, R6W, W.M.,
DOUGLAS COUNTY, OREGON

SURVEYED FOR:
CHARLES A. BASS
P.O. BOX 2058
ROSEBURG, OREGON 97470

SURVEYED BY:
i.e.
ENGINEERING
548 S.E. Jackson Suite 3
Roseburg, Oregon 97470
PHONE (503) 673-0166
FAX (503) 440-9392

SCALE: 1" = 50'

DATE: JUNE 1996

105-05

PAGE: 9 OF 11