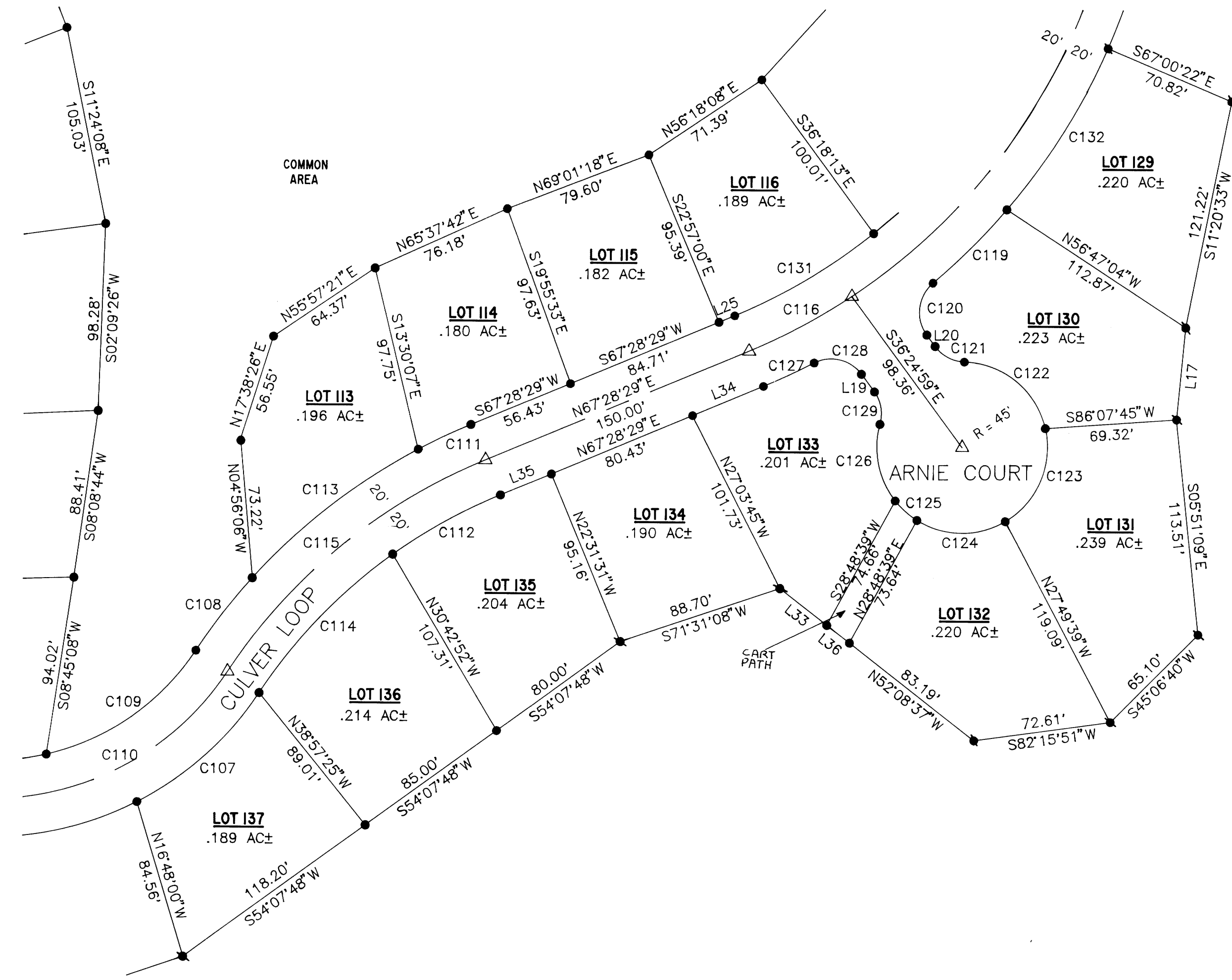


COUNTY SURVEYORS FILE DATA
DO NOT REMOVE FROM OFFICE



LEGEND:

- SET 5/8" I.R. w/ YELLOW PLASTIC CAP INSCRIBED "I.E. ENG." TO BE SET WITHIN TIME SPECIFIED IN THE SURVEYOR'S CERTIFICATE SET ON 3/2/98
- 1/4 CORNER AS NOTED
- CENTER LINE POINT CALCULATED BUT NOT SET
- FD AS NOTED
- ◎ GEODETIC CONTROL MONUMENT AS NOTED
- SET 5/8" x 30" I.R. w/ CAP MKD "I.E. ENG."

CURVE	RAIUS	CHORD	ARC
C107	170.00'	N48°10'09"E 86.25'	87.20'
C108	320.00'	S37°48'16"W 48.32'	48.36'
C109	130.00'	N54°54'13"E 94.99'	97.24'
C110	150.00'	N61°28'29"E 140.84'	146.61'
C111	320.00'	S64°43'48"W 30.65'	30.66'
C112	280.00'	S60°52'15"W 64.40'	64.55'
C113	320.00'	S52°03'35"W 110.32'	110.87'
C114	280.00'	S43°52'15"W 101.05'	101.61'
C115	300.00'	S50°28'29"W 175.42'	178.02'
C116	320.00'	N61°58'29"E 61.34'	61.44'
C117	320.00'	N30°58'29"E 275.53'	284.84'
C119	340.00'	N45°09'26"E 54.84'	54.90'
C120	20.00'	S6°41'01"W 27.33'	30.09'
C121	20.00'	S62°25'35"E 17.54'	18.16'
C122	45.00'	N50°42'49"W 55.07'	59.25'
C123	45.00'	N23°13'52"E 53.18'	56.90'
C124	45.00'	S89°23'46"E 46.56'	48.93'
C125	45.00'	S48°24'18"E 15.38'	15.46'
C126	45.00'	S11°28'50"E 40.98'	42.54'
C127	340.00'	N65°00'54"E 29.18'	29.19'
C128	20.00'	N76°55'50"W 25.99'	28.28'
C129	20.00'	N10°24'23"W 17.54'	18.16'
C131	300.00'	N59°18'57"E 85.15'	85.44'
C132	340.00'	N32°04'46"E 99.94'	100.31'

LINE	DIRECTION	DISTANCE
L17	S 05°33'42" W	48.57'
L19	S 36°24'59" E	11.12'
L20	N 36°24'59" W	7.51'
L25	S 67°28'29" W	8.86'
L33	N 52°08'37" W	31.36'
L34	N 67°28'29" E	40.42'
L35	N 67°28'29" E	29.15'
L36	N 52°08'37" W	15.19'

REGISTERED OREGON LAND SURVEYOR

Donald A. Bentz

JULY 12, 1968
DONALD A. BENTZ
839

EXPIRES 12-31-97

KNOLLS ESTATES P.U.D. PHASE 2

LYING IN THE EAST 1/2 SECTION 13, TOWNSHIP 25 SOUTH, RANGE 6 W,
& IN THE WEST 1/2 SECTION 18, TOWNSHIP 25 SOUTH, RANGE 5 W
WILLAMETTE MERIDIAN, DOUGLAS COUNTY, OREGON

<p>SURVEYED FOR:</p> <p>ALASKA SUTHERLAND CORPORATION PO BOX 860 SUTHERLIN, OREGON 97479</p>	<p>SURVEYED BY:</p> <p>i.e. ENGINEERING</p> <p>548 S.E. Jackson Suite 3 Roseburg, Oregon 97470 PHONE (541) 673-0166 FAX (541) 440-9392</p>
---	--

SCALE: 1"=50' DATE: JULY 8, 1996 824-02 PAGE: 7 OF 8