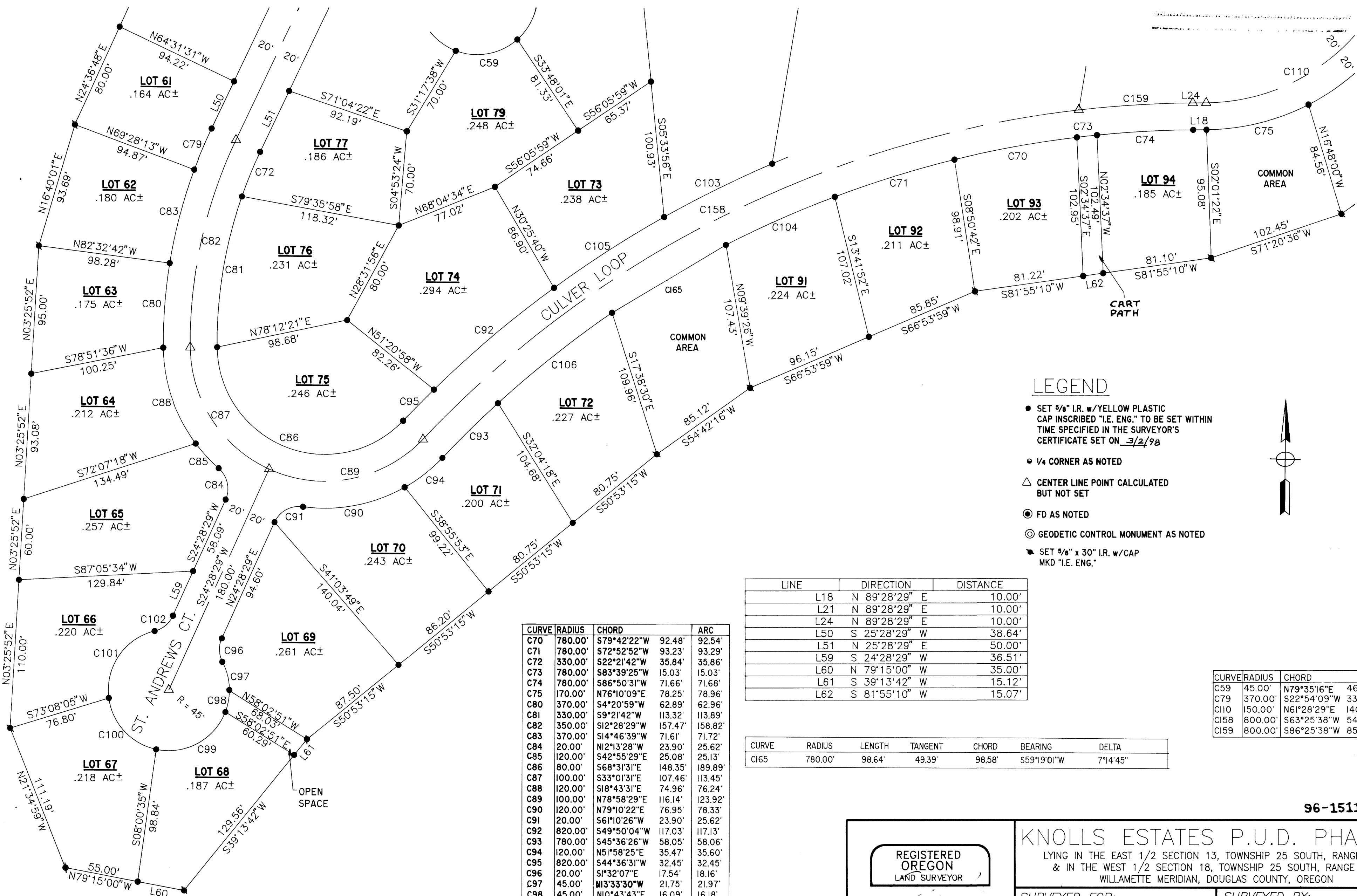
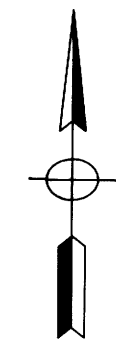


COUNTY SURVEYORS FILE DATA
DO NOT REMOVE FROM OFFICE



- LEGEND**
- SET 5/8" I.R. w/ YELLOW PLASTIC CAP INSCRIBED "I.E. ENG." TO BE SET WITHIN TIME SPECIFIED IN THE SURVEYOR'S CERTIFICATE SET ON 3/2/98
 - 1/4 CORNER AS NOTED
 - △ CENTER LINE POINT CALCULATED BUT NOT SET
 - FD AS NOTED
 - ◎ GEODETIC CONTROL MONUMENT AS NOTED
 - SET 5/8" x 30" I.R. w/ CAP MKD "I.E. ENG."



LINE	DIRECTION	DISTANCE
L18	N 89°28'29" E	10.00'
L21	N 89°28'29" E	10.00'
L24	N 89°28'29" E	10.00'
L50	S 25°28'29" W	38.64'
L51	N 25°28'29" E	50.00'
L59	S 24°28'29" W	36.51'
L60	N 79°15'00" W	35.00'
L61	S 39°13'42" W	15.12'
L62	S 81°55'10" W	15.07'

CURVE	RADIUS	CHORD	ARC
C59	45.00'	N79°35'16"E 46.61'	49.00'
C79	370.00'	S22°54'09"W 33.21'	33.22'
C110	150.00'	N61°28'29"E 140.84'	146.61'
C158	800.00'	S63°25'38"W 545.98'	557.18'
C159	800.00'	S86°25'38"W 85.06'	85.10'

CURVE	RADIUS	LENGTH	TANGENT	CHORD	BEARING	DELTA
C165	780.00'	98.64'	49.39'	98.58'	S59°19'01"W	7°14'45"

CURVE	RADIUS	CHORD	ARC
C70	780.00'	S79°42'22"W 92.48'	92.54'
C71	780.00'	S72°52'52"W 93.23'	93.29'
C72	330.00'	S22°21'42"W 35.84'	35.86'
C73	780.00'	S83°39'25"W 15.03'	15.03'
C74	780.00'	S86°50'31"W 71.66'	71.68'
C75	170.00'	N76°10'09"E 78.25'	78.96'
C80	370.00'	S4°20'59"W 62.89'	62.96'
C81	330.00'	S9°21'42"W 113.32'	113.89'
C82	350.00'	S12°28'29"W 157.47'	158.82'
C83	370.00'	S14°46'39"W 71.61'	71.72'
C84	20.00'	N12°13'28"W 23.90'	25.62'
C85	120.00'	S42°55'29"E 25.08'	25.13'
C86	80.00'	S68°31'31"E 148.35'	189.89'
C87	100.00'	S33°01'31"E 107.46'	113.45'
C88	120.00'	S18°43'31"E 74.96'	76.24'
C89	100.00'	N78°58'29"E 116.14'	123.92'
C90	120.00'	N79°10'22"E 76.95'	78.33'
C91	20.00'	S61°10'26"W 23.90'	25.62'
C92	820.00'	S49°50'04"W 117.03'	117.13'
C93	780.00'	S45°36'26"W 58.05'	58.06'
C94	120.00'	N51°58'25"E 35.47'	35.60'
C95	820.00'	S44°36'31"W 32.45'	32.45'
C96	20.00'	S1°32'07"E 17.54'	18.16'
C97	45.00'	N13°33'30"W 21.75'	21.97'
C98	45.00'	N10°43'43"E 16.09'	16.18'
C99	45.00'	N61°32'19"E 58.46'	63.63'
C100	45.00'	S42°46'42"E 51.84'	55.25'
C101	45.00'	S34°26'40"W 60.28'	66.05'
C102	20.00'	N50°29'05"E 17.54'	18.16'
C103	820.00'	S63°50'13"W 88.68'	88.73'
C104	780.00'	S66°11'48"W 88.66'	88.71'
C105	820.00'	S57°19'55"W 97.41'	97.47'
C106	780.00'	S51°42'59"W 108.18'	108.26'

REGISTERED OREGON LAND SURVEYOR

Donald A. Bentz

JULY 12, 1968
DONALD A. BENTZ
839

EXPIRES 12-31-97

KNOLLS ESTATES P.U.D. PHASE 2
LYING IN THE EAST 1/2 SECTION 13, TOWNSHIP 25 SOUTH, RANGE 6 W,
& IN THE WEST 1/2 SECTION 18, TOWNSHIP 25 SOUTH, RANGE 5 W
WILLAMETTE MERIDIAN, DOUGLAS COUNTY, OREGON

SURVEYED FOR:
ALASKA SUTHERLAND CORPORATION
PO BOX 860
SUTHERLIN, OREGON 97479

SURVEYED BY:
i.e.
ENGINEERING
548 S.E. Jackson Suite 3
Roseburg, Oregon 97470
PHONE (541) 673-0166
FAX (541) 440-9392

SCALE: 1" = 50' DATE: JULY 8, 1996 824-02 PAGE: 5 OF 8