

LAKEVIEW ESTATES

IN THE SW 1/4 OF SEC. 4, & THE SE 1/4 SEC. 5, T25S, R5W, W.M.

CITY OF OAKLAND, DOUGLAS COUNTY STATE OF OREGON

SHEET 3 OF 3
OCTOBER 1998

CURVE TABLE

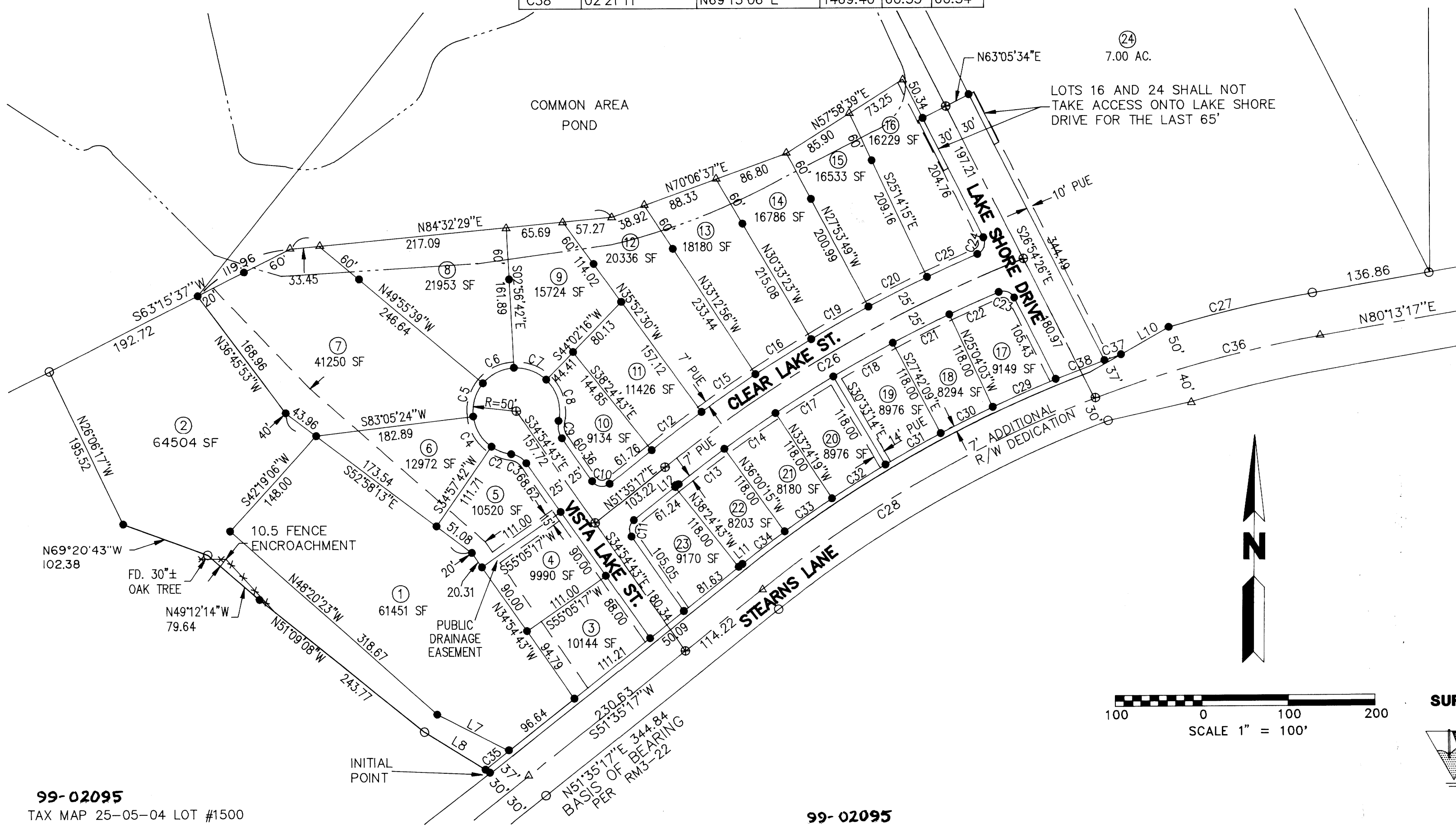
NUMBER	DELTA	CHORD	R'	L'	LC'
C2	28°03'48"	S69°04'12"E	50.00	24.49	24.25
C3	48°11'23"	S59°00'27"E	25.00	21.03	20.41
C4	48°07'42"	S30°58'27"E	50.00	42.00	40.78
C5	46°58'57"	N16°34'52"E	50.00	41.00	39.86
C6	46°58'57"	N63°33'50"E	50.00	41.00	39.86
C7	46°58'57"	S69°27'13"E	50.00	41.00	39.86
C8	59°14'24"	S16°20'32"E	50.00	51.70	49.42
C9	48°11'23"	S10°49'02"E	25.00	21.03	20.41
C10	93°30'00"	N81°39'43"W	14.00	22.85	20.39
C11	86°30'00"	S08°20'17"W	14.00	21.14	19.19
C12	02°32'13"	S52°51'23"W	1637.40	72.50	72.49
C13	02°24'28"	N52°47'30"E	1587.40	66.71	66.71
C14	02°35'56"	N55°17'43"E	1587.40	72.00	71.99
C15	02°39'34"	S55°27'17"W	1637.40	76.00	75.99
C16	02°39'34"	S58°06'51"W	1637.40	76.00	75.99
C17	02°51'05"	N58°01'14"E	1587.40	79.00	78.99
C18	02°51'05"	N60°52'19"E	1587.40	79.00	78.99

CURVE TABLE

NUMBER	DELTA	CHORD	R'	L'	LC'
C19	02°39'34"	S60°46'24"W	1637.40	76.00	75.99
C20	02°39'34"	S63°25'58"W	1637.40	76.00	75.99
C21	02°38'06"	N63°36'54"E	1587.40	73.00	72.99
C22	02°16'13"	N66°04'03"E	1587.40	62.90	62.89
C23	85°53'24"	S69°51'08"E	14.00	20.99	19.08
C24	93°54'56"	S20°03'02"W	14.00	22.95	20.46
C25	02°14'45"	S65°53'07"W	1637.40	64.18	64.18
C27	06°37'18"	N76°54'37"E	1482.40	171.32	171.22
C28	28°38'00"	S65°54'17"W	1432.40	715.84	708.41
C29	03°06'34"	N66°29'14"E	1469.40	79.74	79.73
C30	02°38'06"	N63°36'54"E	1469.40	67.58	67.57
C31	02°51'05"	N60°52'19"E	1469.40	73.13	73.12
C32	02°51'05"	N58°01'13"E	1469.40	73.13	73.12
C33	02°35'56"	N55°17'43"E	1469.40	66.65	66.64
C34	02°24'28"	N52°47'32"E	1469.40	61.75	61.75
C35	01°24'49"	S52°17'42"W	1395.40	34.43	34.43
C36	10°50'44"	N74°47'55"E	1432.40	271.14	270.73
C37	00°47'18"	N70°49'21"E	1469.40	20.22	20.22
C38	02°21'11"	N69°13'06"E	1469.40	60.35	60.34

LINE TABLE

NUMBER	BEARING	DISTANCE
L7	N62°53'53"W	92.72
L8	N58°27'03"W	82.25
L10	N60°35'34"E	63.57
L11	N51°35'17"E	5.29
L12	N51°35'17"E	5.29



REGISTERED
PROFESSIONAL
LAND SURVEYOR

OREGON
JULY 21, 1992
DAVID J. COLLIER
2552
RENEWAL 12-31-99

LEGEND

- SET 5/8"x30" IRON ROD W/PLASTIC CAP STAMPED "LS 2552"
- ⊕ SET 2- 1/2"x1/4" PK NAIL W/BRASS WASHER STAMPED "LS 2552"
- △ CALCULATED POINT
- FOUND 5/8" IRON ROD OR AS NOTED

SURVEY BY:

EGR & Associates, Inc.

99-02095
2535B PRAIRIE ROAD (541) 688-8322
EUGENE, OREGON 97402 FAX (541) 688-8087

99-02095
TAX MAP 25-05-04 LOT #1500

99-02095

**COUNTY SURVEYORS FILE DATA
DO NOT REMOVE FROM OFFICE**