

LAKEVIEW ESTATES

IN THE SW 1/4 OF SEC. 4, & THE SE 1/4 SEC. 5, T25S, R5W, W.M.
CITY OF OAKLAND, DOUGLAS COUNTY
STATE OF OREGON

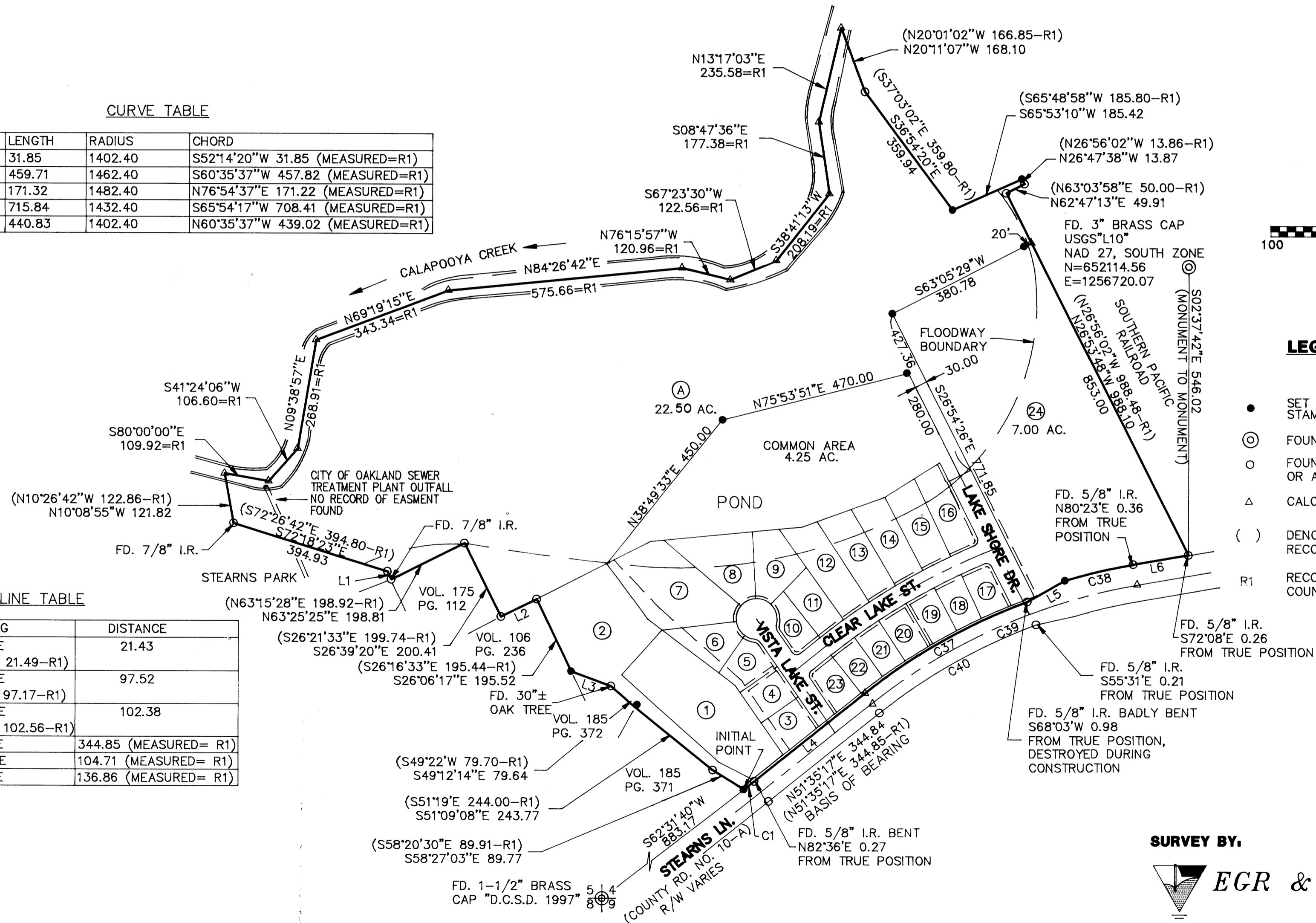
SHEET 2 OF 3
OCTOBER 1998

CURVE TABLE

CURVE	DELTA	LENGTH	RADIUS	CHORD
C1	01°18'05"	31.85	1402.40	S52°14'20"W 31.85 (MEASURED=R1)
C37	18°00'40"	459.71	1462.40	S60°35'37"E 457.82 (MEASURED=R1)
C38	06°37'18"	171.32	1482.40	N76°54'37"E 171.22 (MEASURED=R1)
C39	28°38'00"	715.84	1432.40	S65°54'17"W 708.41 (MEASURED=R1)
C40	18°00'40"	440.83	1402.40	N60°35'37"W 439.02 (MEASURED=R1)

LINE TABLE

LINE	BEARING	DISTANCE
L1	S26°28'10"E (N26°44'08"W 21.49-R1)	21.43
L2	N63°47'18"E (N63°15'28"E 97.17-R1)	97.52
L3	S69°20'43"E (S69°29'02"E 102.56-R1)	102.38
L4	N51°35'17"E	344.85 (MEASURED= R1)
L5	N60°35'44"E	104.71 (MEASURED= R1)
L6	N80°13'17"E	136.86 (MEASURED= R1)



LEGEND

- SET 5/8" x 30" IRON ROD W/PLASTIC CAP STAMPED "LS 2552"
- ⊙ FOUND BRASS CAP AS NOTED
- FOUND 5/8" IRON ROD OR AS NOTED
- △ CALCULATED POINT
- () DENOTES RECORD DATA SEE RECORD NO. BELOW
- R1 RECORD INFORMATION PER COUNTY SURVEY RM3-22.

REGISTERED
PROFESSIONAL
LAND SURVEYOR

David J. Collier

OREGON
JULY 21, 1992
DAVID J. COLLIER
2552
RENEWAL 12-31-99

SURVEY BY:

EGR & Associates, Inc.

2535B PRAIRIE ROAD
EUGENE, OREGON 97402

99-02095
(541) 688-8322
Fax (541) 688-8087

99-02095

TAX MAP 25-05-04 LOT #1500

99-02095

COUNTY SURVEYORS FILE DATA
DO NOT REMOVE FROM OFFICE