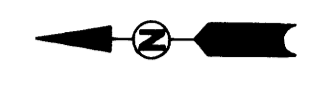


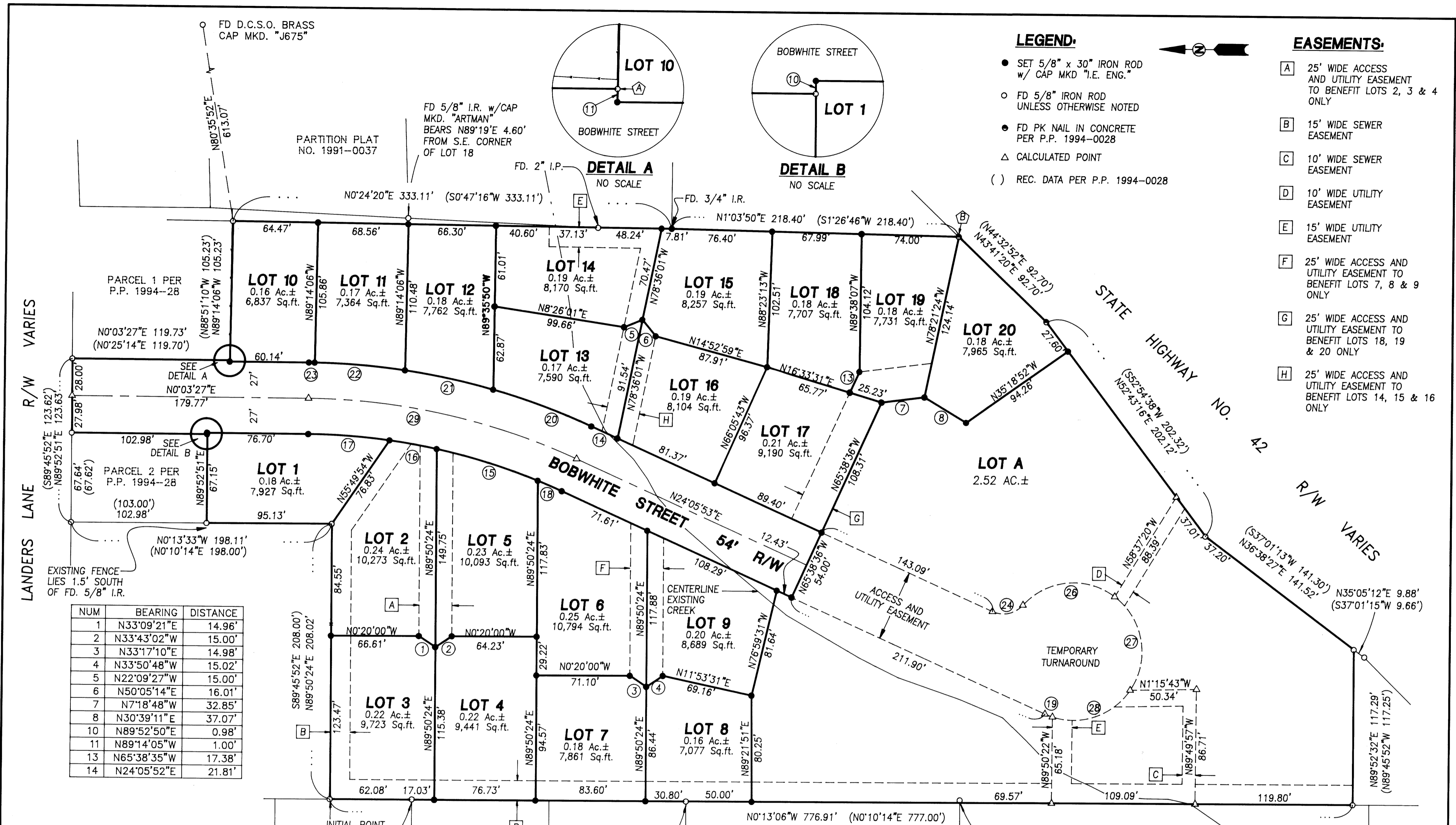
LEGEND:

- SET 5/8" x 30" IRON ROD w/ CAP MKD "I.E. ENG."
- FD 5/8" IRON ROD UNLESS OTHERWISE NOTED
- FD PK NAIL IN CONCRETE PER P.P. 1994-0028
- △ CALCULATED POINT
- () REC. DATA PER P.P. 1994-0028



EASEMENTS:

- [A] 25' WIDE ACCESS AND UTILITY EASEMENT TO BENEFIT LOTS 2, 3 & 4 ONLY
- [B] 15' WIDE SEWER EASEMENT
- [C] 10' WIDE SEWER EASEMENT
- [D] 10' WIDE UTILITY EASEMENT
- [E] 15' WIDE UTILITY EASEMENT
- [F] 25' WIDE ACCESS AND UTILITY EASEMENT TO BENEFIT LOTS 7, 8 & 9 ONLY
- [G] 25' WIDE ACCESS AND UTILITY EASEMENT TO BENEFIT LOTS 18, 19 & 20 ONLY
- [H] 25' WIDE ACCESS AND UTILITY EASEMENT TO BENEFIT LOTS 14, 15 & 16 ONLY

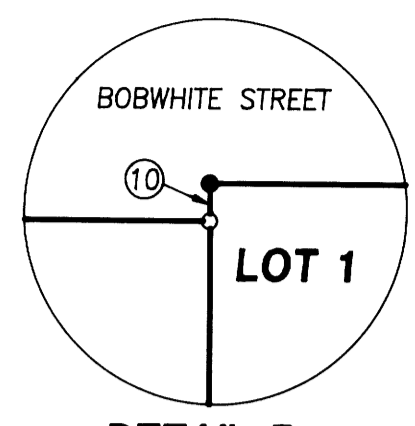
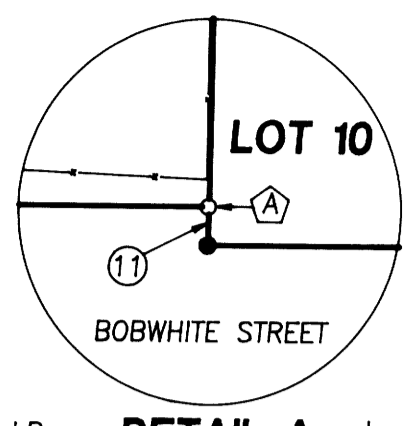


NUM	BEARING	DISTANCE
1	N33°09'21"E	14.96'
2	N33°43'02"W	15.00'
3	N33°17'10"E	14.98'
4	N33°50'48"W	15.02'
5	N22°09'27"W	15.00'
6	N50°05'14"E	16.01'
7	N7°18'48"W	32.85'
8	N30°39'11"E	37.07'
10	N89°52'50"E	0.98'
11	N89°14'05"W	1.00'
13	N65°38'35"W	17.38'
14	N24°05'52"E	21.81'

NUM	RADIUS	ARC	BEARING	CHORD
15	473.00'	80.33'	N16°49'21"E	80.23'
16	473.00'	36.34'	N9°45'24"E	36.33'
17	473.00'	61.90'	N3°48'24"E	61.86'
18	473.00'	19.90'	N22°53'34"E	19.90'
20	527.00'	79.68'	N19°46'01"E	79.61'
21	527.00'	68.38'	N11°43'07"E	68.33'
22	527.00'	68.73'	N4°15'56"E	68.70'
23	527.00'	4.34'	N0°17'36"E	4.34'
24	20.00'	25.21'	N12°00'22"W	23.57'
26	52.00'	76.78'	N5°48'45"W	69.99'
27	52.00'	79.08'	N80°03'06"E	71.68'
28	52.00'	66.94'	N19°30'07"W	62.42'
29	500.00'	209.79'	S12°04'40"W	208.26'

PARTITION PLAT NO. 1991-0037

FD 5/8" I.R. w/CAP MKD. "ARTMAN" BEARS N89°19'E 4.60' FROM S.E. CORNER OF LOT 18



DETAIL A NO SCALE

DETAIL B NO SCALE

COUNTY SURVEYORS FILE DATA DO NOT REMOVE FROM OFFICE

FD 5/8" I.R. w/ CAP MKD. "BENTZ" BEARS EAST 0.37' FROM TRUE POINT AND N9°33'18"W 804.19' FROM D.C.S.O. BRASS CAP MKD. "JACKIE 1978", USED AS BASIS OF BEARING

FD 3/4" I.P. BEARS EAST 0.26' FROM TRUE POINT

FD 3/4" I.P. BEARS N89°47'E 1.97' FROM TRUE POINT

PARTITION PLAT NO. 1990-0081

REGISTERED PROFESSIONAL LAND SURVEYOR

OREGON JULY 12, 1988 DONALD A. BENTZ 639

EXPIRES: 12/31/99

QUAIL HOLLOW SUBDIVISION

IN THE SE 1/4 OF SEC. 10 & THE NE 1/4 OF SEC. 15, T28S, R6W, W.M., DOUGLAS COUNTY, OREGON

SURVEYED FOR: DON BARROWS 5153 S. MYRTLE RD. MYRTLE CREEK, OR 97457 (541)863-6057

SURVEYED BY: i.e. ENGINEERING 741 S.E. Jackson Street Roseburg, Oregon 97470 PHONE (541) 673-0166 FAX (541) 440-9392

98-24365

98-24365