

MORGAN'S RIDGE SUBDIVISION

SEC 36, TWP 26 S, R 6 W, WM TAX LOT 309
SEC 1, TWP 27 S, R 6 W, WM TAX LOT 212
TAX ACCOUNT NOS. 7542.04 AND 8760.17
DOUGLAS COUNTY, OREGON
SEPTEMBER 1998
SCALE 1" = 100'

- LEGEND**
- Q FOUND I.R. MARKED AS SHOWN
 - ⊕ MONUMENT NOT FOUND, RESET WITH 5/8" X 30" I.R. WITH PLASTIC CAP MARKED M.E. FARR LS 1181
 - SET 5/8" X 30" I.R. WITH PLASTIC CAP MARKED M.E. FARR LS 1181
 - △ COMPUTED POINT, NO MONUMENT SET
 - ⊙ 2" IRON PIPE, INITIAL POINT WEST BRAE SUBDIVISION
 - PP O POWER POLE
 - PUE PUBLIC UTILITY EASEMENT
 - PVTUE PRIVATE UTILITY EASEMENT
 - FS WATER SUMP FOR FIRE PROTECTION
 - WATER WELL

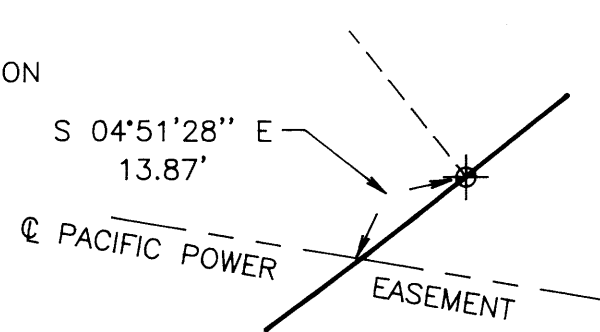
REGISTERED PROFESSIONAL LAND SURVEYOR

Maurice E. Farr

OREGON
SEPT 23, 1977
MAURICE E. FARR
1181

EXPIRES 12-31-99

DETAIL B
TIE TO EASEMENT
SCALE: 1" = 20'



PARCEL 1
1990-0043

35' PRIVATE ROAD EASEMENT,
PUBLIC UTILITY EASEMENT &
PRIVATE UTILITY EASEMENT

SEE DETAIL B

PARCEL 1
1990-0011

LOT 1
5.00 A

LOT 2
5.00 A

LOT 3
5.04 A

LOT 4
5.01 A

CURVE DATA

NUMBER	DELTA	CHORD BEARING	T'	R'	L'	LC'
C1	01°23'46"	N 70°14'48" W	3.10	254.19	6.19	6.19
C2	77°42'20"	N 30°41'45" W	201.38	250.00	339.05	313.66
C3	02°13'13"	N 07°02'49" E	20.93	1080.00	41.85	41.85
C4	11°27'23"	N 00°12'30" E	60.19	600.00	119.97	119.77
C5	08°19'48"	N 09°41'06" W	58.26	800.00	116.31	116.21
C6	03°20'57"	N 15°31'29" W	12.57	430.00	25.14	25.13
C7	07°20'28"	N 20°52'11" W	27.59	430.00	55.10	55.06
C8	48°10'29"	N 00°27'11" W	165.41	370.00	311.10	302.02
C9	12°41'28"	N 29°58'48" E	41.15	370.00	81.96	81.79
C10	23°33'07"	N 24°32'59" E	58.37	280.00	115.10	114.29
C11	03°28'36"	N 03°46'54" W	19.27	635.00	38.53	38.52
C12	08°20'02"	N 09°41'05" W	60.84	835.00	121.46	121.35
C13	14°13'00"	N 20°57'30" W	74.82	600.00	148.88	148.49
C14	06°36'04"	N 21°14'24" W	26.82	465.00	53.57	53.54
C15	24°13'47"	N 12°25'32" W	68.69	320.00	135.32	134.32
C16	32°05'30"	S 07°53'20" E	34.51	120.00	67.21	66.34
C17	20°54'15"	S 80°00'03" E	57.96	314.19	114.63	114.00
C18	19°30'27"	N 80°41'56" W	43.70	254.19	86.54	86.13

LINE DATA

NUMBER	DIRECTION	DISTANCE
L31	S 15°37'49" E	28.12'
L32	S 34°43'27" W	34.36'
L33	S 67°51'45" W	34.21'
L34	S 07°39'07" W	58.74'
L35	S 08°09'25" W	222.60'
L36	N 43°16'35" E	20.12'
L37	S 69°43'39" E	178.54'
L38	N 00°27'10" W	60.00'
L39	N 89°32'50" E	59.09'
L40	N 00°24'48" E	60.00'
L41	S 89°32'50" W	60.00'
L42	S 89°32'50" W	37.35'
L43	N 63°47'00" E	59.97'
L44	N 52°55'03" E	193.87'
L45	N 70°15'23" E	59.71'
L46	N 87°26'56" E	104.05'
L47	S 47°22'05" E	31.81'

LINE DATA

NUMBER	DIRECTION	DISTANCE
L1	N 69°32'55" W	20.95'
L2	N 08°09'25" E	7.53'
L3	N 24°32'26" W	58.89'
L4	S 02°55'40" E	81.66'
L5	N 87°57'24" E	35.00'
L6	N 05°30'34" W	206.36'
L7	N 13°51'06" W	84.25'
L8	N 13°51'06" W	50.54'
L9	N 26°51'39" E	111.90'
L10	N 65°57'57" E	110.63'
L11	N 75°16'44" E	117.89'
L12	N 14°43'16" W	35.00'
L13	S 75°16'44" W	120.74'
L14	S 65°57'57" W	216.94'
L15	N 25°36'22" W	59.50'
L16	N 24°32'26" W	58.89'
L17	N 22°19'40" W	190.27'
L18	N 25°28'53" E	485.58'
L19	N 12°28'40" E	412.85'
L20	N 31°21'50" E	127.56'
L21	N 31°21'50" E	10.66'
L22	N 63°03'07" E	35.47'
L23	N 36°34'14" E	42.09'
L24	S 63°06'55" E	61.22'
L25	S 34°36'41" W	62.67'
L26	N 30°43'19" E	89.20'
L27	N 01°07'44" W	24.02'
L28	N 87°23'35" W	55.14'
L29	N 86°42'33" W	53.00'
L30	S 55°04'46" E	25.45'

DETAIL A
TIE TO EASEMENT
SCALE: 1" = 10'

