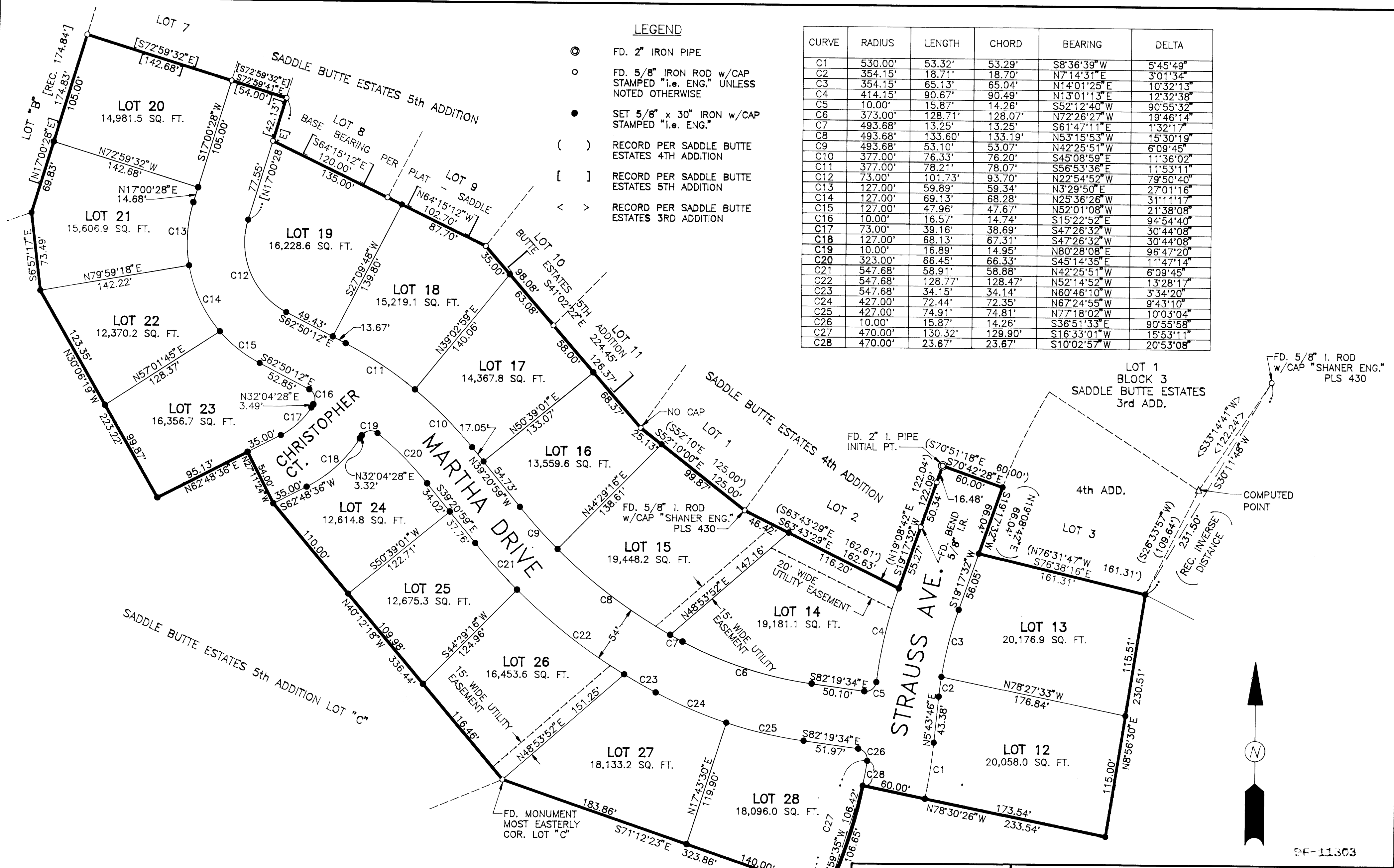


LEGEND

- ⊙ FD. 2" IRON PIPE
- FD. 5/8" IRON ROD w/CAP STAMPED "i.e. ENG." UNLESS NOTED OTHERWISE
- SET 5/8" x 30" IRON w/CAP STAMPED "i.e. ENG."
- () RECORD PER SADDLE BUTTE ESTATES 4TH ADDITION
- [] RECORD PER SADDLE BUTTE ESTATES 5TH ADDITION
- < > RECORD PER SADDLE BUTTE ESTATES 3RD ADDITION

CURVE	RADIUS	LENGTH	CHORD	BEARING	DELTA
C1	530.00'	53.32'	53.29'	S8°36'39"W	5°45'49"
C2	354.15'	18.71'	18.70'	N7°14'31"E	3°01'34"
C3	354.15'	65.13'	65.04'	N14°01'25"E	10°32'13"
C4	414.15'	90.67'	90.49'	N13°01'13"E	12°32'38"
C5	10.00'	15.87'	14.26'	S52°12'40"W	90°55'32"
C6	373.00'	128.71'	128.07'	N72°26'27"W	19°46'14"
C7	493.68'	13.25'	13.25'	S61°47'11"E	1°32'17"
C8	493.68'	133.60'	133.19'	N53°15'53"W	15°30'19"
C9	493.68'	53.10'	53.07'	N42°25'51"W	6°09'45"
C10	377.00'	76.33'	76.20'	S45°08'59"E	11°36'02"
C11	377.00'	78.21'	78.07'	S56°53'36"E	11°53'11"
C12	73.00'	101.73'	93.70'	N22°54'52"W	79°50'40"
C13	127.00'	59.89'	59.34'	N3°29'50"E	27°01'16"
C14	127.00'	69.13'	68.28'	N25°36'26"W	31°11'17"
C15	127.00'	47.96'	47.67'	N52°01'08"W	21°38'08"
C16	10.00'	16.57'	14.74'	S15°22'52"E	9°45'40"
C17	73.00'	39.16'	38.69'	S47°26'32"W	30°44'08"
C18	127.00'	68.13'	67.31'	S47°26'32"W	30°44'08"
C19	10.00'	16.89'	14.95'	N80°28'08"E	96°47'20"
C20	323.00'	66.45'	66.33'	S45°14'35"E	11°47'14"
C21	547.68'	58.91'	58.88'	N42°25'51"W	6°09'45"
C22	547.68'	128.77'	128.47'	N52°14'52"W	3°28'17"
C23	547.68'	34.15'	34.14'	N60°46'10"W	3°34'20"
C24	427.00'	72.44'	72.35'	N67°24'55"W	9°43'10"
C25	427.00'	74.91'	74.81'	N77°18'02"W	10°03'04"
C26	10.00'	15.87'	14.26'	S36°51'33"E	90°55'58"
C27	470.00'	130.32'	129.90'	S16°33'01"W	15°53'11"
C28	470.00'	23.67'	23.67'	S10°02'57"W	20°53'08"



COUNTY SURVEYORS FILE DATA
DO NOT REMOVE FROM OFFICE

REGISTERED PROFESSIONAL LAND SURVEYOR
Donald A. Bentz
OREGON
JULY 12, 1988
DONALD A. BENTZ
839
EXPIRES 12-31-97

SADDLE BUTTE ESTATES SIXTH ADDITION
IN THE SW 1/4 OF SEC. 30, T26S, R5W
AND THE SE & NE 1/4 OF SEC. 25, T26S, R6W
WILLAMETTE MERIDIAN, DOUGLAS COUNTY, OREGON

SURVEYED FOR: L&H LUMBER COMPANY 859 W. LOOKINGGLASS RD. ROSEBURG, OR. 97470 (541) 672-4883	SURVEYED BY: 548 S.E. Jackson Suite 3 Roseburg, Oregon 97470 PHONE (503) 673-0166 FAX (503) 440-9392 i.e. ENGINEERING
---	--

SCALE: 1" = 60' DATE: JAN. 1996 140-14 PAGE: 2 OF 2

96-11303