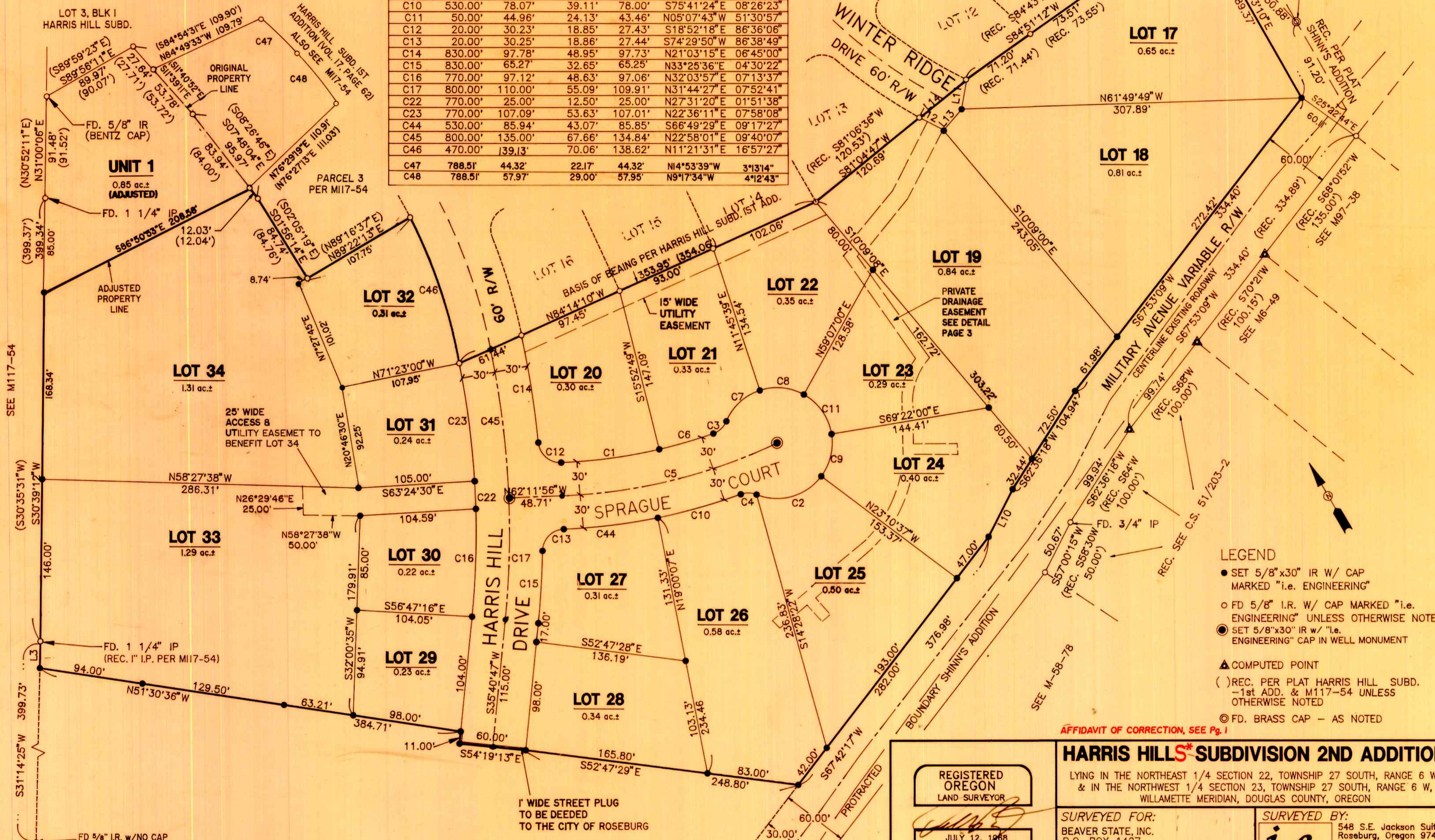


LINE	DIRECTION	DISTANCE
L3	N31°14'25"E	24.13'
L10	N57°00'15"E	48.02'
L11	S38°34'10"W	26.88'
L12	S31°48'00"E	25.00'
L13	N69°59'28"E	25.33'
L14	N81°04'47"E	54.39' (54.30')

CURVE	RADIUS	LENGTH	TANGENT	CHORD	BEARING	DELTA
C1	470.00'	89.82'	45.05'	89.68'	S67°38'58"E	10°56'58"
C2	50.00'	65.51'	38.41'	60.92'	S75°38'44"E	75°04'09"
C3	20.00'	16.56'	8.79'	16.10'	N76°55'45"E	47°27'13"
C4	20.00'	14.59'	7.64'	14.27'	N59°00'33"W	41°48'06"
C5	500.00'	201.29'	102.03'	199.93'	S73°43'53"E	23°03'57"
C6	470.00'	51.03'	25.54'	51.00'	S76°14'03"E	06°13'13"
C7	50.00'	42.38'	22.55'	41.12'	S77°28'30"W	48°33'31"
C8	50.00'	41.32'	21.92'	40.16'	N54°33'41"W	47°21'10"
C9	50.00'	40.31'	21.32'	39.23'	N43°44'12"E	46°11'37"
C10	530.00'	78.07'	39.11'	78.00'	S75°41'24"E	08°26'23"
C11	50.00'	44.96'	24.13'	43.46'	N05°07'43"W	51°30'57"
C12	20.00'	30.23'	18.85'	27.43'	S18°52'18"E	86°36'06"
C13	20.00'	30.25'	18.86'	27.44'	S74°29'50"W	86°38'49"
C14	830.00'	97.78'	48.95'	97.73'	N21°03'15"E	06°45'00"
C15	830.00'	65.27'	32.65'	65.25'	N33°25'36"E	04°30'22"
C16	770.00'	97.12'	48.63'	97.06'	N32°03'57"E	07°13'37"
C17	800.00'	110.00'	55.09'	109.91'	N31°44'27"E	07°52'41"
C22	770.00'	25.00'	12.50'	25.00'	N27°31'20"E	01°51'38"
C23	770.00'	107.09'	53.63'	107.01'	N22°36'11"E	07°58'08"
C44	530.00'	85.94'	43.07'	85.85'	S66°49'29"E	09°17'27"
C45	800.00'	135.00'	67.66'	134.84'	N22°58'01"E	09°40'07"
C46	470.00'	39.13'	22.17'	44.32'	N11°21'31"E	16°57'27"
C47	788.51'	44.32'	22.17'	44.32'	N4°53'39"W	3°13'14"
C48	788.51'	57.97'	29.00'	57.95'	N9°17'34"W	4°12'43"



- LEGEND**
- SET 5/8"x30" IR W/ CAP MARKED "i.e. ENGINEERING"
  - FD 5/8" I.R. W/ CAP MARKED "i.e. ENGINEERING" UNLESS OTHERWISE NOTED
  - SET 5/8"x30" IR W/ "i.e. ENGINEERING" CAP IN WELL MONUMENT
  - ▲ COMPUTED POINT
  - ( ) REC. PER PLAT HARRIS HILL SUBD. - 1st ADD. & M117-54 UNLESS OTHERWISE NOTED
  - ◎ FD. BRASS CAP - AS NOTED

AFFIDAVIT OF CORRECTION, SEE Pg. 1

**HARRIS HILLS\* SUBDIVISION 2ND ADDITION**

LYING IN THE NORTHEAST 1/4 SECTION 22, TOWNSHIP 27 SOUTH, RANGE 6 W, & IN THE NORTHWEST 1/4 SECTION 23, TOWNSHIP 27 SOUTH, RANGE 6 W, WILLAMETTE MERIDIAN, DOUGLAS COUNTY, OREGON

SURVEYED FOR:  
BEAVER STATE, INC.  
P.O. BOX 1427  
ROSEBURG, OREGON 97470  
(503) 679-6744

SURVEYED BY:  
**i.e.**  
ENGINEERING  
548 S.E. Jackson Suite 3  
Roseburg, Oregon 97470  
PHONE (503) 673-0166  
FAX (503) 440-9392

REGISTERED  
OREGON  
LAND SURVEYOR  
*Donald A. Bentz*  
JULY 12, 1968  
DONALD A. BENTZ  
839  
EXPIRES 12-31-97

SCALE: 1"=60'      DATE: MAY 1997      280-04      PAGE: 2 OF 3