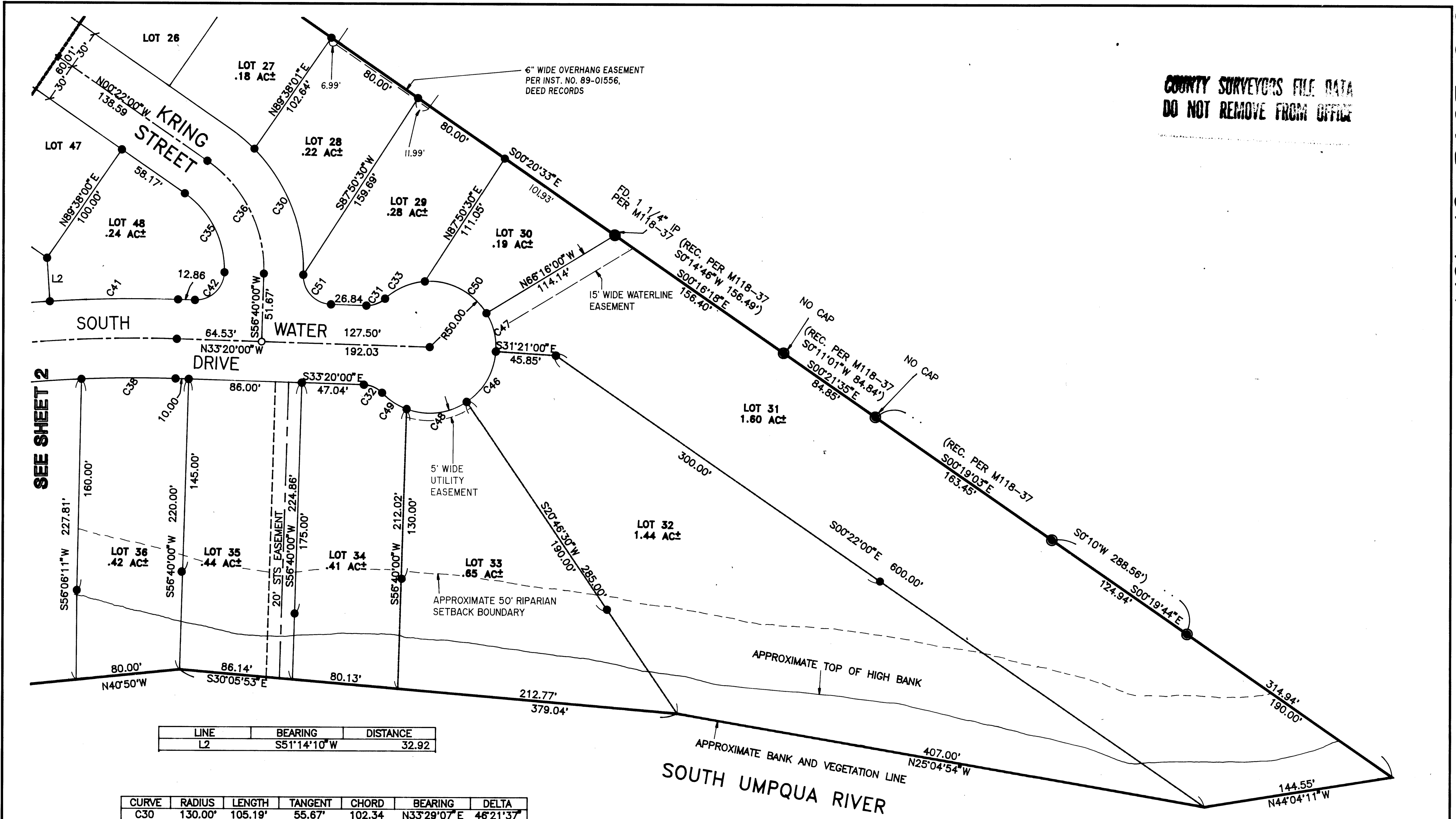


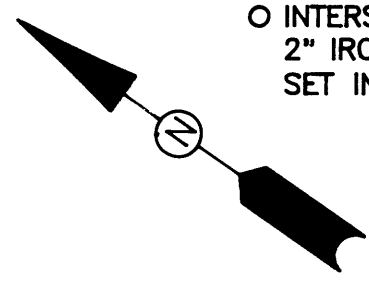
COUNTY SURVEYOR'S FILE DATA
DO NOT REMOVE FROM OFFICE



LINE	BEARING	DISTANCE
L2	S51°14'10\"/>	

CURVE	RADIUS	LENGTH	TANGENT	CHORD	BEARING	DELTA
C30	130.00'	105.19'	55.67'	102.34'	N33°29'07\"/>	
C31	20.00'	15.51'	8.16'	15.12'	S55°32'28\"/>	
C32	20.00'	15.51'	8.16'	15.12'	N11°07'32\"/>	
C33	50.00'	33.53'	17.42'	32.91'	N58°32'15\"/>	
C34	130.00'	24.21'	12.14'	24.18'	N04°58'06\"/>	
C35	70.00'	69.67'	38.03'	66.83'	N28°09'00\"/>	
C36	100.00'	99.54'	54.33'	95.48'	N28°09'00\"/>	
C38	970.00'	71.63'	35.83'	71.61'	N35°28'55\"/>	
C41	1030.00'	97.63'	48.85'	97.59'	N36°02'58\"/>	
C42	21.67'	34.04'	21.67'	30.65'	S78°19'39\"/>	
C46	50.00'	45.49'	24.46'	43.94'	N84°42'41\"/>	
C47	50.00'	30.47'	15.72'	30.00'	N41°11'28\"/>	
C48	50.00'	47.64'	25.81'	45.86'	S41°55'38\"/>	
C49	50.00'	22.44'	11.41'	22.25'	S01°46'24\"/>	
C50	50.00'	55.03'	30.68'	52.29'	N07°47'48\"/>	
C51	21.67'	34.04'	21.67'	30.65'	S11°40'00\"/>	

- LEGEND:**
- SET 5/8" x 30" I.R. w/CAP MKD "I.E. ENG."
 - FD 5/8" I.R. w/CAP MKD "I.E. ENG." UNLESS OTHERWISE NOTED
 - △ CALCULATED POINT
 - INTERSECTION MONUMENT BOX 2" IRON PIPE w/BRASS CAP SET IN CONCRETE



REGISTERED OREGON LAND SURVEYOR

Donald A. Bentz

JULY 12, 1986
DONALD A. BENTZ
839

EXPIRES 12-31-97

ORCHARD ESTATES PHASE 3
AND BOUNDARY LINE ADJUSTMENT
LYING IN THE SE. AND SW. 1/4 SECTION 14, TOWNSHIP 27 SOUTH, RANGE 6 W, WILLAMETTE MERIDIAN, DOUGLAS COUNTY, OREGON

96-11302

SURVEYED FOR:
ORCHARD ESTATES PARTNERSHIP
P.O. BOX 1203
ROSEBURG, OREGON 97470
(503) 672-4786

SURVEYED BY:
i.e.
ENGINEERING
548 S.E. Jackson Suite 3
Roseburg, Oregon 97470
PHONE (503) 873-0166
FAX (503) 440-9392