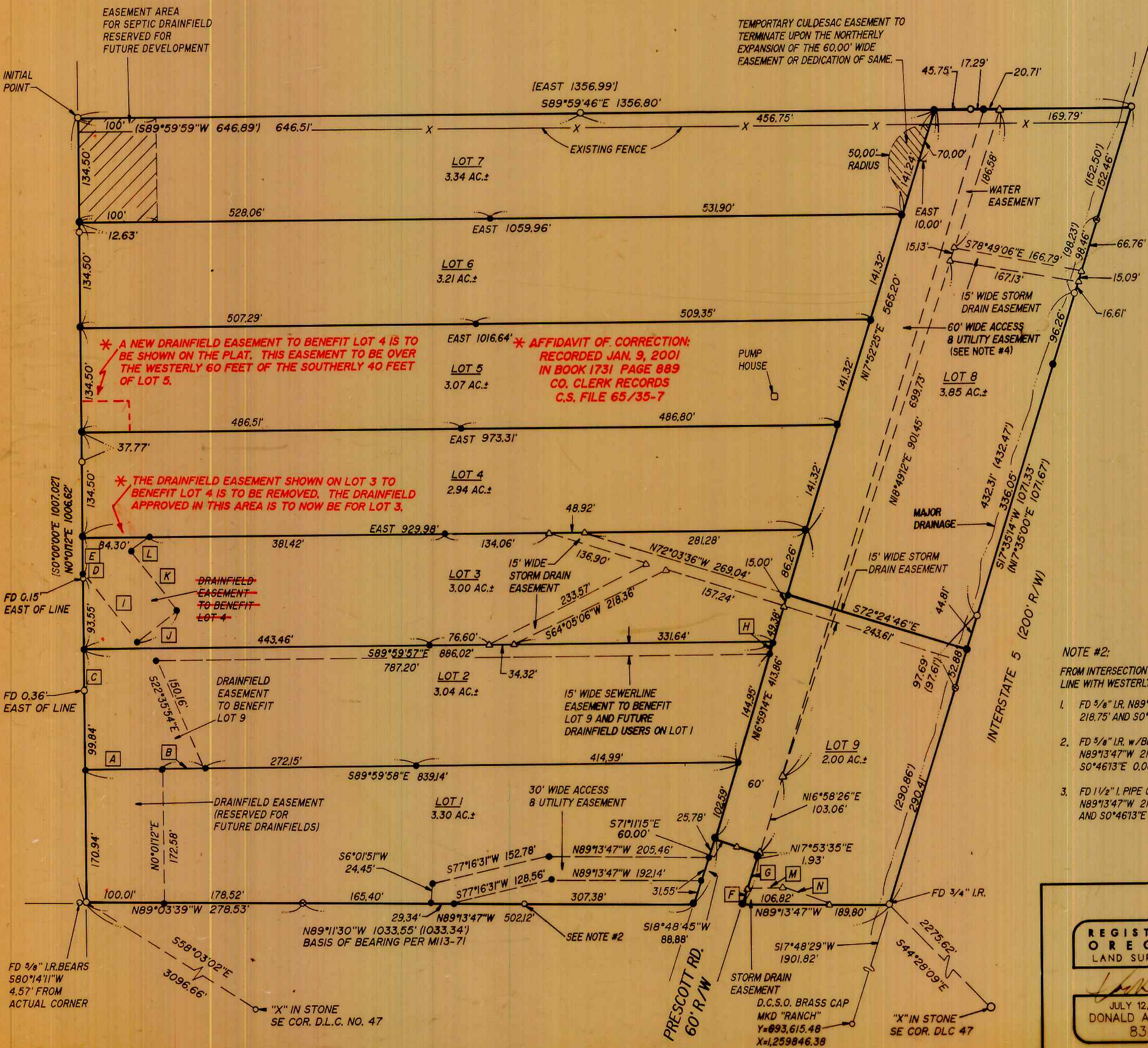


COUNTY SURVEYORS FILE DATA  
DO NOT REMOVE FROM OFFICE

NOTE #3:  
PINS FROM M 113-71 WERE  
REMOVED BY OWNER TO  
ELIMINATE CONFUSION.

NOTE #4:  
EASEMENT SHOWN ON PREVIOUS SURVEYS OF THIS  
PROPERTY WERE NEVER DEEDED, THEREFORE  
EASEMENTS SHOWN HEREON WILL TAKE  
PRECEDENCE.



LEGEND:

- SET 5/8" x 30" I.R. w/CAP MKD "i.e. ENG."
○ FD 5/8" I.R. w/CAP MKD "BENTZ SURV. INC." UNLESS OTHERWISE NOTED
⊗ FD 5/8" I.R. NO CAP
△ CALCULATED POINT
( ) RECORD DATA PER M113-71
[ ] RECORD DATA PER RM3-71

NOTE #1:  
NO GEODETIC MONUMENTS ARE  
INTERVISIBLE WITH THOSE SHOWN  
HEREON.

Table with 3 columns: BEARING, DIST., and a grid of points A through L with their respective coordinates.

NOTE #2:  
FROM INTERSECTION OF SOUTH  
LINE WITH WESTERLY R/W PRESCOTT RD.  
1. FD 5/8" I.R. N89°15'47"W  
218.75' AND S0°40'13"E 0.10'  
2. FD 5/8" I.R. w/BENTZ CAP  
N89°13'47"W 219.08' AND  
S0°46'13"E 0.08'  
3. FD 1 1/2" I. PIPE OVER 3/4" I. PIPE  
N89°13'47"W 219.00'  
AND S0°46'13"E 0.03'

96-11171

RICE HILL WEST SUBDIVISION  
IN THE NE 1/4 OF SEC. 28, T23S, R5W, W.M.,  
DOUGLAS COUNTY, OREGON

REGISTERED  
OREGON  
LAND SURVEYOR

JULY 12, 1995  
DONALD A. BENTZ  
839

EXPIRES 12-31-97

SURVEYED FOR:  
DAN WEBB  
P.O. BOX 188  
YONCALLA, OREGON 97499

SURVEYED BY:  
i.e. ENGINEERING  
548 S.E. Jackson Suite 3  
Roseburg, Oregon 97470  
PHONE (503) 673-0166  
FAX (503) 440-9392

SCALE: 1" = 100' DATE: AUG. 1995 197-08 PAGE: 1 OF 2