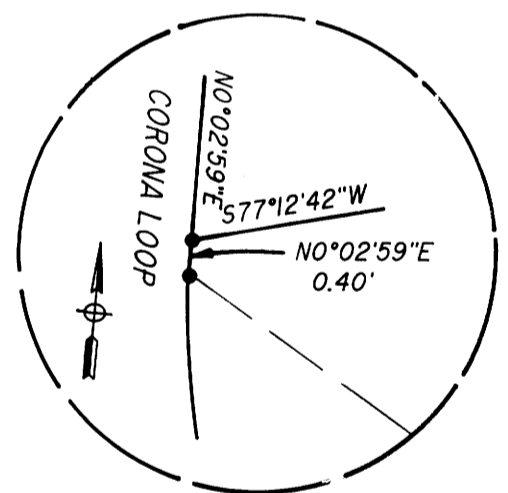
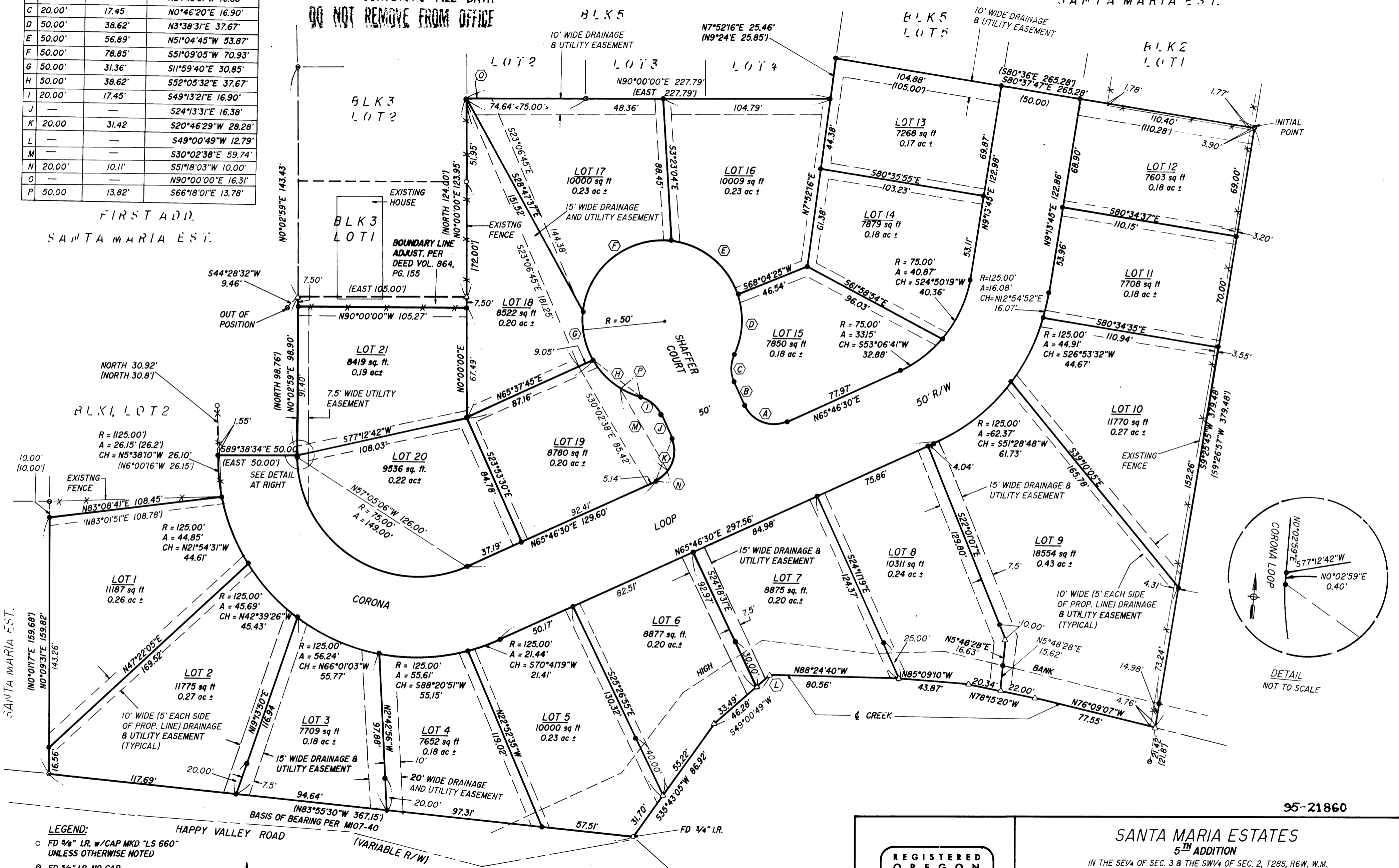


RADIUS	ARC	CHORD/ BRG.-DIST.
A	20.00'	31.42' N69°13'31"W 28.28'
B	—	— N24°13'31"W 16.38'
C	20.00'	17.45' N0°46'20"E 16.90'
D	50.00'	38.62' N3°38'31"E 37.67'
E	50.00'	56.89' N51°04'45"W 53.87'
F	50.00'	78.85' S51°09'05"W 70.93'
G	50.00'	31.36' S11°59'40"E 30.85'
H	50.00'	38.62' S52°05'32"E 37.67'
I	20.00'	17.45' S49°13'21"E 16.90'
J	—	— S24°13'31"E 16.38'
K	20.00'	31.42' S20°46'29"W 28.28'
L	—	— S49°00'49"W 12.79'
M	—	— S30°02'38"E 59.74'
N	20.00'	10.11' S51°18'03"W 10.00'
O	—	— N90°00'00"E 16.31'
P	50.00'	13.82' S66°18'01"E 13.78'

COUNTY SURVEYORS FILE DATA
DO NOT REMOVE FROM OFFICE

SANTA MARIA EST.

THIRD ADD.
SANTA MARIA EST.



DETAIL
NOT TO SCALE

- LEGEND:**
- FD 3/8" I.R. w/CAP MKD "LS 660" UNLESS OTHERWISE NOTED
 - FD 3/8" I.R. NO CAP
 - SET 3/8" x 30" I.R. w/CAP MKD "L.E. ENG."
 - △ CALCULATED POINT
 - () RECORD DATA PER M107-40
 - || RECORD DATA PER VOL. 16, PG. 72
 - <-> RECORD DATA PER VOL. 16, PG. 58



NOTE:
ACCESS TO LOTS 2, 3, 4, & 5 FROM
HAPPY VALLEY ROAD IS RESTRICTED.

95-21860

<p>REGISTERED OREGON LAND SURVEYOR</p> <p>JULY 12, 1968 DONALD A. BENTZ 839</p> <p>EXPIRES 12-31-95</p>		<p>SANTA MARIA ESTATES 5TH ADDITION</p> <p>IN THE SE 1/4 OF SEC. 3 & THE SW 1/4 OF SEC. 2, T28S, R6W, W.M., DOUGLAS COUNTY, OREGON</p>	
<p>SURVEYED FOR: BURDETTE HOMES INC. 325 SE TERRACE DR. ROSEBURG, OREGON 97470</p>		<p>SURVEYED BY: i.e. ENGINEERING</p> <p>548 S.E. Jackson Suite 3 Roseburg, Oregon 97470 PHONE (503) 673-0166 FAX (503) 440-9392</p>	
SCALE: 1" = 40'	DATE: MARCH 1995	108-14	PAGE: 1 OF 2