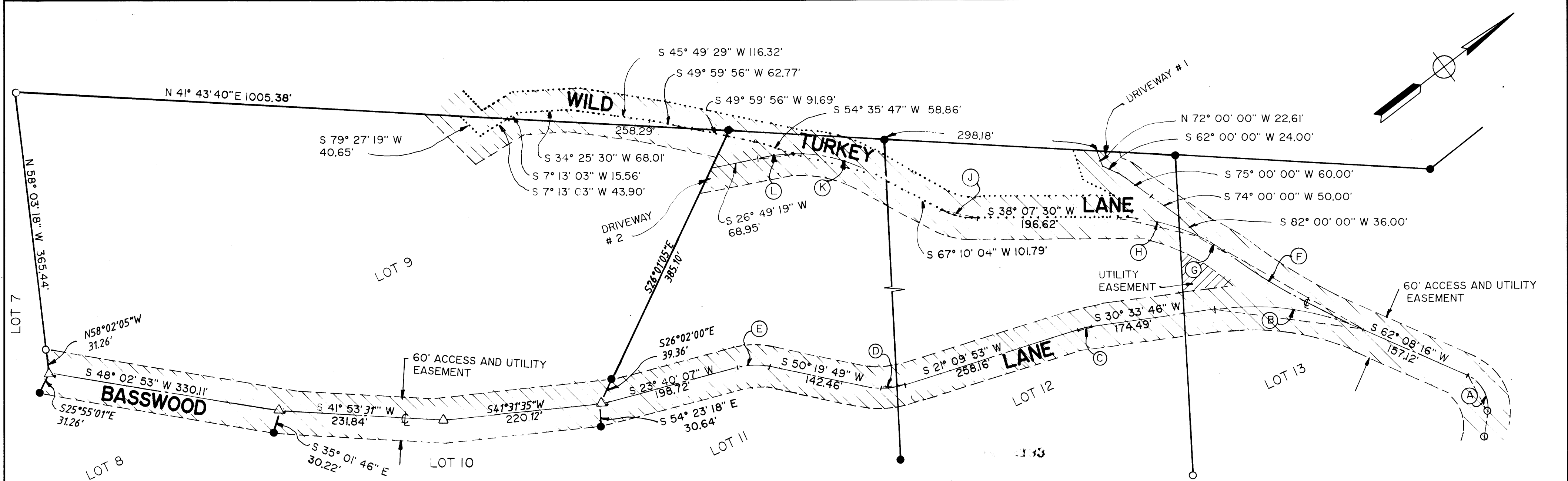


- (A) CH = S 78° 46' 16" W 212.55'  
R = 2019.86' L = 212.65' Δ = 6° 01' 55"
- (B) CH = S 68° 52' 33" W 120.00'  
R = 2024.86' L = 120.02' Δ = 3° 23' 46"
- (C) CH = S 50° 21' 16" W 1160.51'  
R = 2004.86' L = 1177.35' Δ = 33° 38' 49"

- ① S 89° 45' 50" W 141.12'
- ② S 74° 11' 19" W 217.21'
- ③ N 14° 14' 46" W 20.00'
- ④ S 68° 29' 54" W 184.29'
- ⑤ S 22° 49' 20" E 20.00'
- ⑥ S 32° 42' 54" W 35.47'
- ⑦ S 49° 18' 15" W 203.89'
- ⑧ S 66° 34' 36" W 188.68'
- ⑨ S 71° 48' 55" W 179.56'
- ⑩ N 88° 54' 58" W 234.32'



- (A) CH = N 80° 25' 12" W 60.80'  
R = 50.00' L = 65.35' Δ = 74° 53' 24"
- (B) CH = S 46° 21' 01" W 216.37'  
R = 397.64' L = 219.13' Δ = 31° 34' 29"
- (C) CH = S 25° 51' 50" W 16.38'  
R = 100.00' L = 16.40' Δ = 9° 23' 44"
- (D) CH = S 35° 44' 51" W 50.36'  
R = 100.00' L = 50.91' Δ = 29° 10' 05"
- (E) CH = S 36° 59' 58" W 46.12'  
R = 100.00' L = 46.54' Δ = 26° 39' 59"
- (F) CH = S 68° 03' 50" W 223.66'  
R = 1083.14' L = 224.06' Δ = 11° 51' 08"
- (G) CH = S 69° 14' 50" W 44.70'  
R = 262.96' L = 44.12' Δ = 9° 36' 49"
- (H) CH = S 51° 18' 54" W 121.63'  
R = 266.52' L = 122.71' Δ = 26° 22' 48"
- (J) CH = S 52° 38' 47" W 50.15'  
R = 100.00' L = 50.69' Δ = 29° 02' 38"
- (K) CH = S 53° 26' 12" W 120.89'  
R = 244.52' L = 122.40' Δ = 31° 14' 08"
- (L) CH = S 31° 22' 35" W 50.80'  
R = 224.52' L = 50.49' Δ = 12° 53' 01"

COUNTY SURVEYORS FILE DATA  
DO NOT REMOVE FROM OFFICE

SCALE: 1" = 100'

<p>REGISTERED OREGON LAND SURVEYOR</p> <p>JULY 12, 1968 DONALD A. BENTZ 839</p> <p>EXPIRES 12-31-93</p>	<p><b>DIAMOND HEIGHTS SUBDIVISION</b> 3rd ADDITION</p> <p>LYING IN THE NORTHWEST 1/4, AND SOUTHWEST 1/4, SECTION 29, TOWNSHIP 27 SOUTH, RANGE 6 WEST, W.M., DOUGLAS COUNTY, OREGON</p>	
	<p>SURVEYED FOR: CHARLES A. BASS 4233 OLD HIGHWAY 99 ROSEBURG, OREGON 97470</p>	<p>SURVEYED BY: <b>i.e.</b> ENGINEERING</p> <p>1205 S.E. Court Street Roseburg, Oregon 97470 PHONE (503) 673-0166 FAX (503) 440-9392</p>
SCALE: AS NOTED	DATE: MAR, 1993	PAGE: 2 OF 3