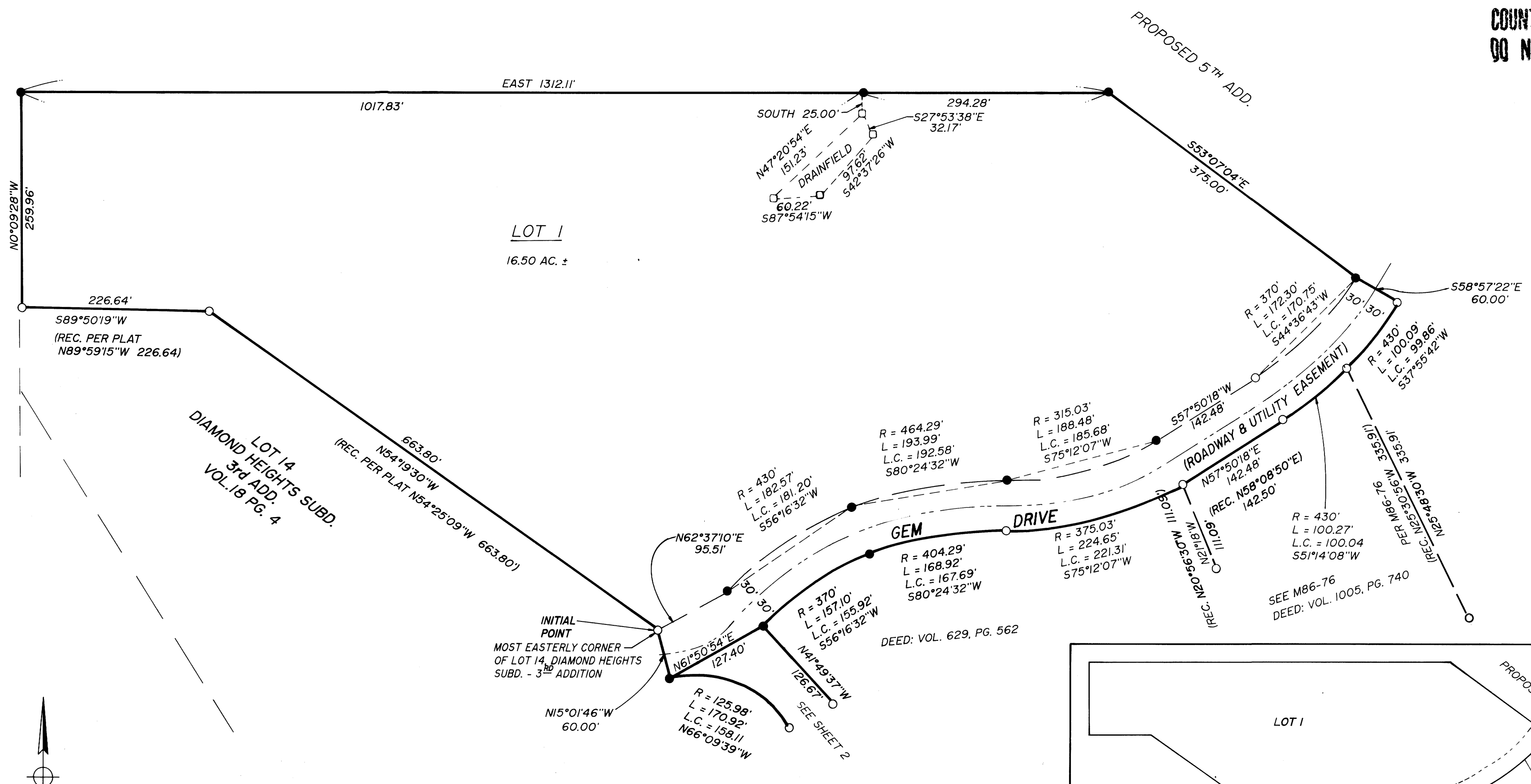
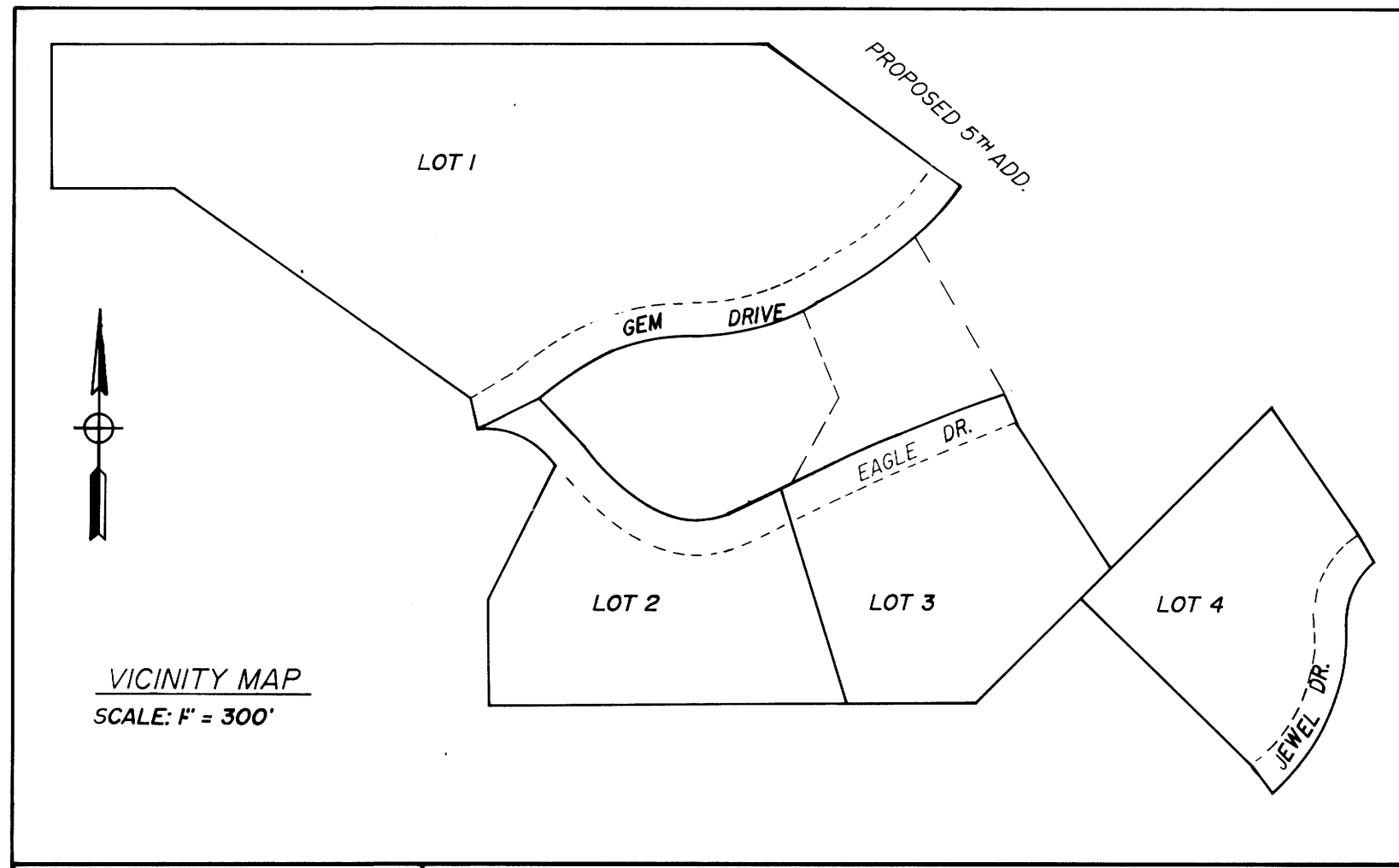


COUNTY SURVEYORS FILE DATA
DO NOT REMOVE FROM OFFICE



NOTE:
 FROM THE INITIAL POINT THE 1/4 CORNER COMMON TO SECTION 21 & 28,
 T27S, R6W, W.M. BEARS N79°29'26\"/>

- LEGEND:
- FD 5/8\"/>



95-18978

REGISTERED
 OREGON
 LAND SURVEYOR

JULY 12, 1968
 DONALD A. BENTZ
 839

EXPIRES 12-31-95

DIAMOND HEIGHTS SUBDIVISION
 4th ADDITION

IN THE NE 1/4 & THE NW 1/4 OF SEC. 29, T27S, R6W, W.M.
 DOUGLAS COUNTY, OREGON

SURVEYED FOR:
 CHARLES A. BASS
 4233 OLD HIGHWAY 99
 ROSEBURG, OREGON 97470

SURVEYED BY:
 i.e.
 ENGINEERING
 548 S.E. Jackson Suite 3
 Roseburg, Oregon 97470
 PHONE (503) 673-0166
 FAX (503) 440-9392

SCALE: 1" = 100' DATE: JAN. 1995 105-05 PAGE: 1 OF 3