

LEGEND:

- FD. 5/8" I.R. UNLESS OTHERWISE NOTED.
- SET 5/8" x 30" I.R. W/ CAP MARKED "i.e. ENGINEERING."
- △ COMPUTED POINT
- [] M 90-8
- () M 90-7
- { } LOOKINGGLASS ROAD PLANS
- TEST HOLE

WATER: UMPQUA BASIN WATER DISTRICT
 SEWER: SEPTIC
 ZONED: R-5
 COMP. PLAN: RC-5
 PLANNING FILE NO.: 91-138

CENTERLINE OF A 10' WIDE UTILITY EASEMENT (5 FEET ON EITHER SIDE OF CENTERLINE) AS DESCRIBED IN INSTRUMENT NUMBER 72-13597 IN THE DEED RECORDS OF DOUGLAS COUNTY, OREGON.

NOTE:
 TIED 5/8" IRON ROD WITH STATE PLANE CONTROL ROSEBURG, CBL 1440, USING GPS. COORDINATES AND ELEVATION FOR #1440 ARE Y=588,428.14, X=1,239,725.38 AND ELEVATION 535.73. COORDINATES COMPUTED FOR THE 5/8" IRON ROD ARE: Y=571,153.77, X=1,221,156.95 AND ELEVATION 777.29 USED GPS POINTS FOR BASIS OF BEARING USING A CONVERGENCE CORRECTION OF -1'59'48".

NARRATIVE:

[1] SET OUT 60.00' AT 90° FROM EXISTING MONUMENT ACROSS THE STREET.

JADE STREET PINS WERE HARD TO FIT, BUT WE FIRST DETERMINED THE NORTH LINE, THEN ESTABLISHED THE SOUTH LINE 60.00 FEET AT RIGHT ANGLES WHERE APPROPRIATE. LOOKINGGLASS R.O.W. PER COUNTY ROAD PLANS.

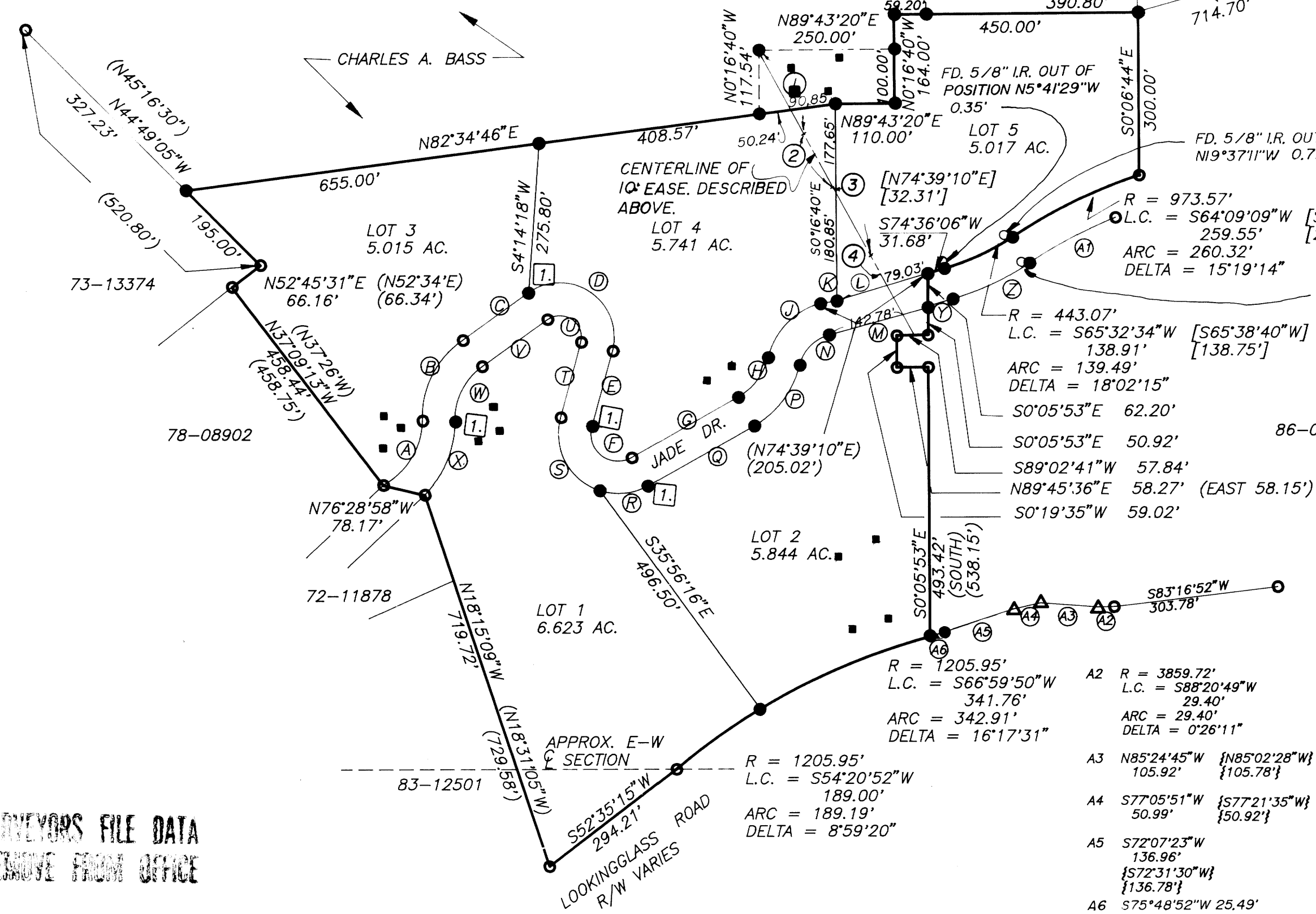
THE EAST LINE OF LOT 2 WAS ESTABLISHED BY THE SECTION CORNER COMMON TO 20, 21, 28, & 29, AND THE EXISTING MONUMENTS FOUND ON THE EAST LINE OF LOT 27.

PERIMETER PINS WERE SET ON LINE WITH EXISTING MONUMENTS.

FIELD CREW: M. HOLT, N. HIBBS
 COMPUTATIONS: A. TEITZEL
 CADD: M. CHAMPLAIN

CENTERLINE OF 10' EASEMENT:

- ① N29°32'00"W 172.00'
- ② N28°06'00"W 119.00'
- ③ N30°26'00"W 149.00'
- ④ N31°05'00"E 160.70'



A	R = 139.62' L.C. = S31°23'55"W (S31°15'50W) 138.77' (139.62') ARC = 145.23' DELTA = 59°35'51"	M	S74°36'06"W (N74°39'10"E) 188.54' (188.28')
B	R = 171.00' L.C. = S26°45'16"W (N26°50'15"E) 165.79' (156.53') ARC = 173.09' DELTA = 57°59'51"	N	R = 77.45' L.C. = S44°15'46"W (N44°18'57"E) 78.11' (78.24') ARC = 81.87' DELTA = 60°34'08"
C	S54°14'33"W (N54°04'30"E) 148.54' (148.92')	P	R = 175.73' L.C. = S37°15'41"W (N37°19'05"E) 139.01' (139.24') ARC = 142.91' DELTA = 46°35'46"
D	R = 100.00' L.C. = N55°17'01"W (S55°07'40"E) 188.65' (188.87') ARC = 246.46' DELTA = 141°12'35"	Q	S60°35'42"W (N60°39'25"E) 225.32' (225.40')
E	N15°36'54"E (S15°40'10"W) 142.89' (144.44')	R	R = 110.00' L.C. = S84°34'47"W 88.60' ARC = 91.19' DELTA = 47°29'51"
F	R = 50.00' L.C. = N51°02'18"W (S51°49'00"E) 92.81' (92.39') ARC = 118.93' DELTA = 136°16'43"	S	R = 110.00' L.C. = N27°44'37"W (S51°49'00"E) 152.63' (203.26') ARC = 168.67' DELTA = 87°51'21"
G	S60°35'42"W (N60°39'25"E) 225.04' (225.40')	T	N15°25'53"E (S15°40'10"W) 143.24' (144.44')
H	R = 115.73' L.C. = S37°15'27"W (N37°19'05") 91.56' (91.70') ARC = 94.13' DELTA = 46°36'14"	U	R = 40.00' L.C. = N55°35'24"W (S55°07'40"E) 74.91' (75.55') ARC = 96.97' DELTA = 138°54'06"
J	R = 137.45' L.C. = S44°15'46"W (N44°18'57"E) 138.63' (138.85') ARC = 145.30' DELTA = 60°34'08"	V	S54°13'05"W (S54°04'30") 148.45' (148.92')
K	S74°36'06"W 31.30'	W	R = 121.26' L.C. = S26°15'32"W (S26°50'15"W) 112.67' (121.26') ARC = 117.18' DELTA = 55°22'00"
L	S74°36'06"W 173.72'	X	R = 192.99' L.C. = S22°37'10"W (S22°17'36"W) 146.30' (148.91') ARC = 150.05' DELTA = 44°32'51"
A1	R = 913.57' L.C. = S64°04'03"W [61°57'22"E] 169.51' [169.41'] ARC = 169.75' DELTA = 10°48'37"	Y	S74°36'06"W [N74°39'10"E] 48.13' [48.78']
	R = 443.07' L.C. = S65°32'34"W [S65°38'40"W] 138.91' [138.75'] ARC = 139.49' DELTA = 18°02'15"	Z	R = 503.07' L.C. = S65°32'34"W [N65°38'40"E] 157.72' [157.54'] ARC = 158.37' DELTA = 18°02'15"

DIAMOND HEIGHTS SUBDIVISION 2nd ADDITION
 SE 1/4 & NE 1/4 OF SECTION 29 & NW 1/4 OF SECTION 28
 TOWNSHIP 27 SOUTH, RANGE 6 WEST, WILLAMETTE MERIDIAN,
 DOUGLAS COUNTY, OREGON

SURVEYED FOR :
 CHARLES A. BASS
 4233 HWY. 99 SOUTH
 ROSEBURG, OREGON

SURVEYED BY :
 i.e. ENGINEERING
 1205 S.E. COURT STREET
 ROSEBURG, OREGON 97470
 (503)673-0166

DATE: APR. 1993

SCALE: 1" = 200'

C.N. 105
 J.N. 01

PAGE 1 of 2

EXPIRES 12-31-93

COUNTY SURVEYORS FILE DATA
 DO NOT REMOVE FROM OFFICE