

LEGEND

- SET 5/8" x 30" I.R. w/CAP MARKED "I.e. ENGINEERING" UNLESS NOTED OTHERWISE
- FD 5/8" I.R. UNLESS NOTED OTHERWISE
- ▭ CURBS & PAVED ROADS
- ▨ PUBLIC UTILITY EASEMENT (PUE)

RICHARD H. BLOCK  
LINCOLN WARE  
RICHARD ANDERSON  
ACCT #s 10317.09  
10317.10

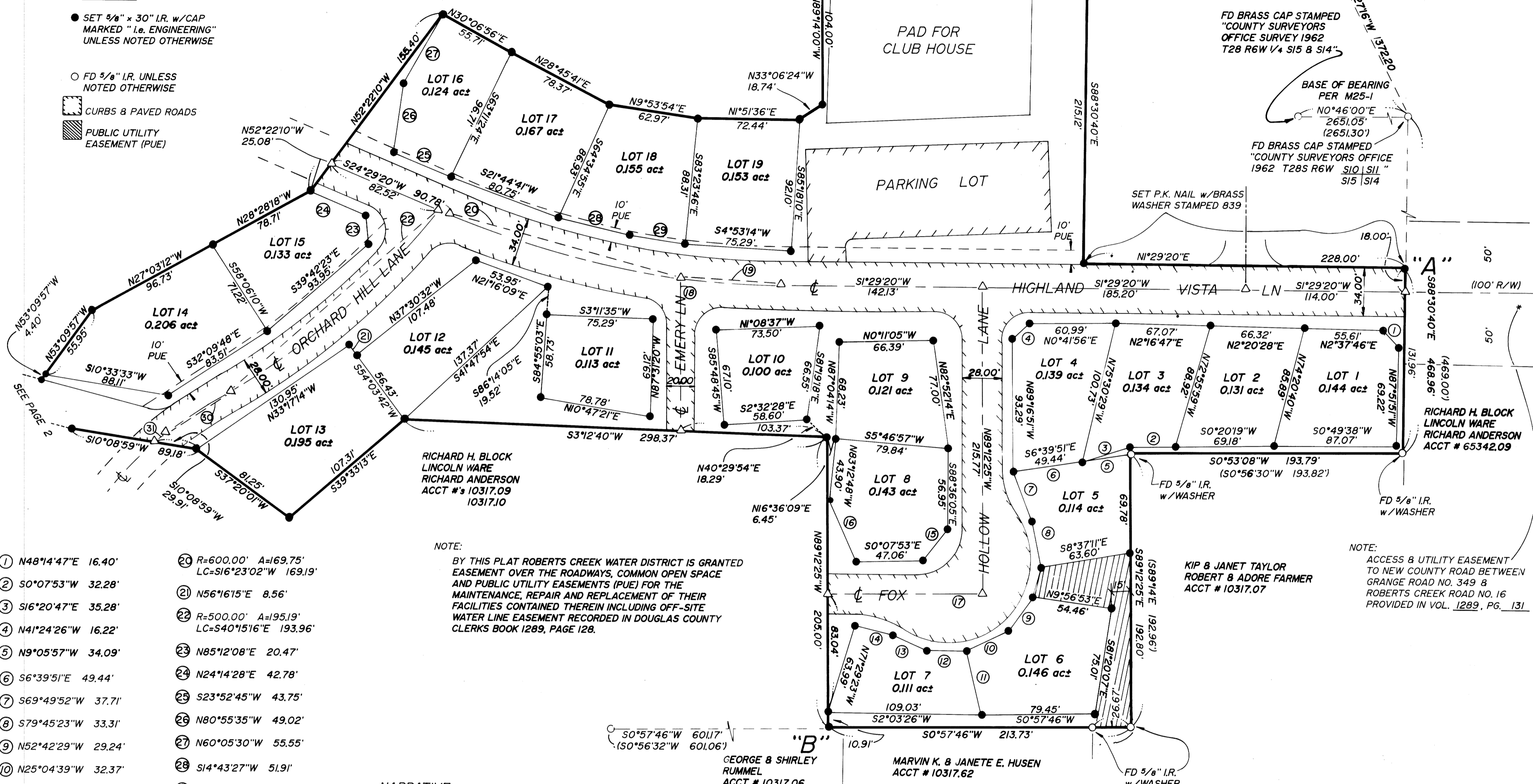
FD D.C.S.O. DISK  
"GARRETT 1972"  
FD D.C.S.O. DISK  
"JACKIE 1978"  
Δ = 82°10'18"

FD BRASS CAP STAMPED  
"COUNTY SURVEYORS  
OFFICE SURVEY 1962  
T28 R6W 1/4 S15 & S14"

BASE OF BEARING  
PER M25-1  
N0°46'00"E  
2651.05'  
(2651.30')

FD BRASS CAP STAMPED  
"COUNTY SURVEYORS OFFICE  
1962 T28S R6W S10 S11"  
S15 S14

SET P.K. NAIL w/BRASS  
WASHER STAMPED 839



- ① N48°14'47"E 16.40'
- ② S0°07'53"W 32.28'
- ③ S16°20'47"E 35.28'
- ④ N41°24'26"W 16.22'
- ⑤ N9°05'57"W 34.09'
- ⑥ S6°39'51"E 49.44'
- ⑦ S69°49'52"W 37.71'
- ⑧ S79°45'23"W 33.31'
- ⑨ N52°42'29"W 29.24'
- ⑩ N25°04'39"W 32.37'
- ⑪ S77°37'31"W 46.32'
- ⑫ N1°31'39"E 28.25'
- ⑬ N25°48'09"E 26.21'
- ⑭ N14°58'05"E 27.83'
- ⑮ S50°30'04"E 28.12'
- ⑯ S67°03'59"W 46.90'
- ⑰ N0°57'46"E 109.72'
- ⑱ S89°12'25"E 106.88'
- ⑲ R=600.00' A=71.10'  
LC=S4°53'01"W 71.06'
- ⑳ R=600.00' A=169.75'  
LC=S16°23'02"W 169.19'
- ㉑ N56°16'15"E 8.56'
- ㉒ R=500.00' A=195.19'  
LC=S40°15'16"E 193.96'
- ㉓ N85°12'08"E 20.47'
- ㉔ N24°14'28"E 42.78'
- ㉕ S23°52'45"W 43.75'
- ㉖ N80°55'35"W 49.02'
- ㉗ N60°05'30"W 55.55'
- ㉘ S14°43'27"W 51.91'
- ㉙ S9°56'40"W 39.57'
- ㉚ R=500.00' A=55.44'  
LC=S32°14'48"E 55.41'
- ㉛ R=500.00' A=10.18'  
LC=S36°00'23"E 10.18'

NOTE:  
BY THIS PLAT ROBERTS CREEK WATER DISTRICT IS GRANTED EASEMENT OVER THE ROADWAYS, COMMON OPEN SPACE AND PUBLIC UTILITY EASEMENTS (PUE) FOR THE MAINTENANCE, REPAIR AND REPLACEMENT OF THEIR FACILITIES CONTAINED THEREIN INCLUDING OFF-SITE WATER LINE EASEMENT RECORDED IN DOUGLAS COUNTY CLERKS BOOK 1289, PAGE 128.

NARRATIVE:  
SURVEY TO SUBDIVIDE AND MONUMENT "HIGHLAND AT VISTA RIDGE PHASE I, PLANNED COMMUNITY (P.U.D.)" AS SHOWN HEREON. THE NORTH AND EAST LINES FROM POINT "A" TO POINT "B" WERE CONTROLLED BY FOUND PINS FROM M98-40. THE EAST LINES FROM POINT "B" TO POINT "C" WERE CREATED AS SHOWN. THE REST OF THE EAST LINES AND THE SOUTH LINE FROM POINT "C" TO POINT "D" WERE CONTROLLED BY DEED DESCRIPTION IN DOUGLAS COUNTY CLERKS INST. NO. 93-03064. THE WEST LINES FROM POINT "D" BACK TO POINT "A" WERE CREATED AS SHOWN.

FIELD CREW: MARC HOLT & NEIL HIBBS  
EQUIPMENT: LEITZ SET-4  
OFFICE: TOM BIXBY  
DRAFTING: BETH MORGAN

COUNTY SURVEYORS FILE DATA  
DO NOT REMOVE FROM OFFICE

94-16782

<b>REGISTERED OREGON LAND SURVEYOR</b>		<b>HIGHLANDS AT VISTA RIDGE PHASE I PLANNED COMMUNITY (P.U.D.)</b> IN: NW 1/4 OF SEC 14, T28S, R6W, W.M., DOUGLAS COUNTY, OR	
JULY 12, 1968 DONALD A. BENTZ 839		SURVEYED FOR: Richard H. Block, Lincoln Ware, Richard K. Anderson 9 SW MT Jefferson TR Lake Oswego, OR 97035	
EXPIRES 12-31-95		SURVEYED BY: <b>i.e.</b> ENGINEERING 1205 S.E. Court Street Roseburg, Oregon 97470 PHONE (503) 673-0166 FAX (503) 440-9392	
SCALE: 1" = 50'	DATE: JAN 1994	206-02	PAGE: 1 OF 2