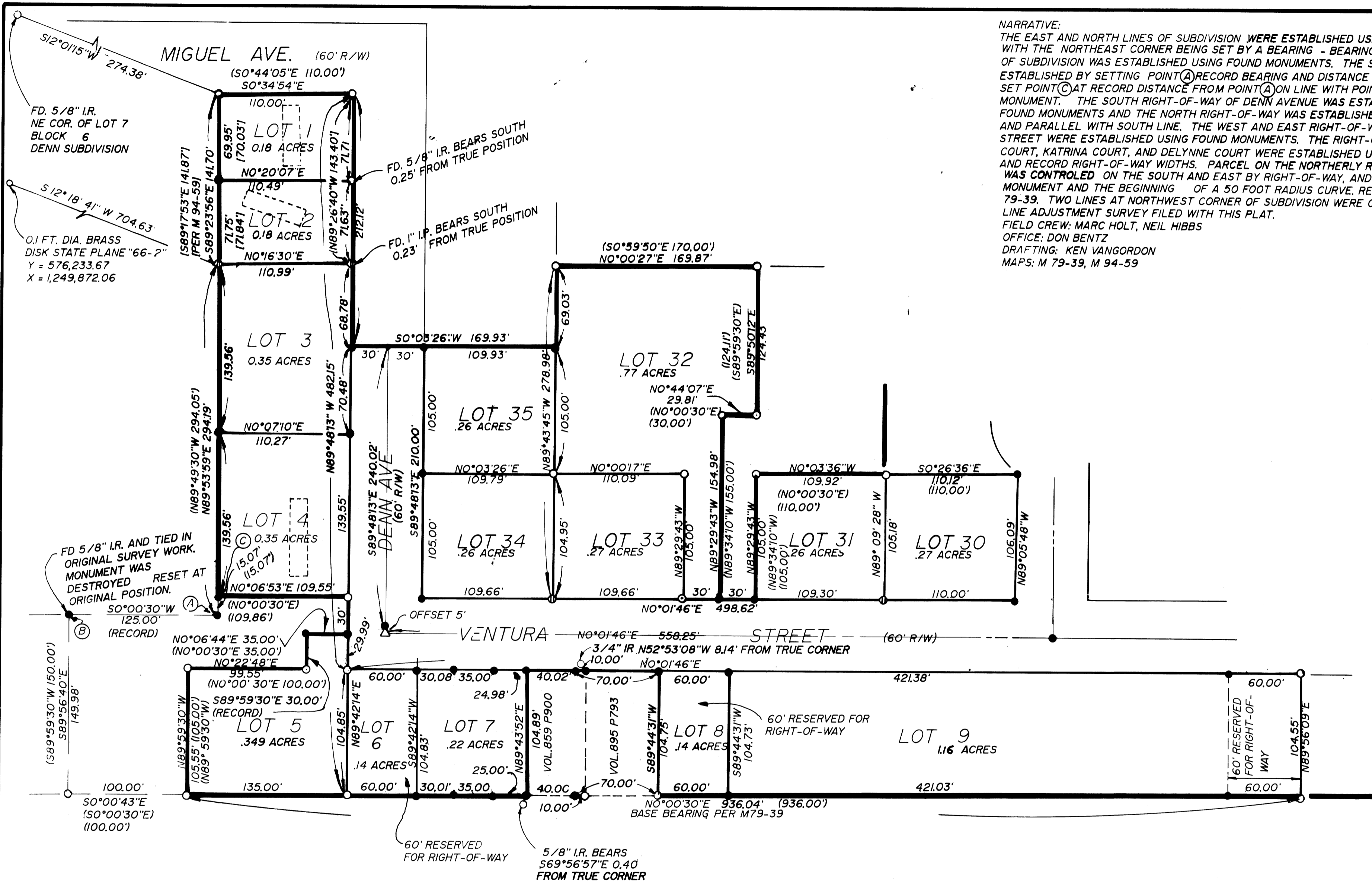


NARRATIVE:
 THE EAST AND NORTH LINES OF SUBDIVISION WERE ESTABLISHED USING FOUND MONUMENTS WITH THE NORTHEAST CORNER BEING SET BY A BEARING - BEARING INTERSECT, WEST LINE OF SUBDIVISION WAS ESTABLISHED USING FOUND MONUMENTS. THE SOUTH LINE WAS ESTABLISHED BY SETTING POINT (A) RECORD BEARING AND DISTANCE FROM POINT (B) THEN SET POINT (C) AT RECORD DISTANCE FROM POINT (A) ON LINE WITH POINT (A) AND FOUND MONUMENT. THE SOUTH RIGHT-OF-WAY OF DENN AVENUE WAS ESTABLISHED USING FOUND MONUMENTS AND THE NORTH RIGHT-OF-WAY WAS ESTABLISHED 60 FEET NORTH AND PARALLEL WITH SOUTH LINE. THE WEST AND EAST RIGHT-OF-WAY LINE OF VENTURA STREET WERE ESTABLISHED USING FOUND MONUMENTS. THE RIGHT-OF-WAYS FOR PRIVADO COURT, KATRINA COURT, AND DELYNNE COURT WERE ESTABLISHED USING FOUND MONUMENTS AND RECORD RIGHT-OF-WAY WIDTHS. PARCEL ON THE NORTHERLY RIGHT OF WAY OF DELYNNE WAS CONTROLLED ON THE SOUTH AND EAST BY RIGHT-OF-WAY, AND ON THE WEST BY FOUND MONUMENT AND THE BEGINNING OF A 50 FOOT RADIUS CURVE. REFERENCE 91-13541 AND M 79-39. TWO LINES AT NORTHWEST CORNER OF SUBDIVISION WERE CONTROLLED BY PROPERTY LINE ADJUSTMENT SURVEY FILED WITH THIS PLAT.
 FIELD CREW: MARC HOLT, NEIL HIBBS
 OFFICE: DON BENTZ
 DRAFTING: KEN VANGORDON
 MAPS: M 79-39, M 94-59

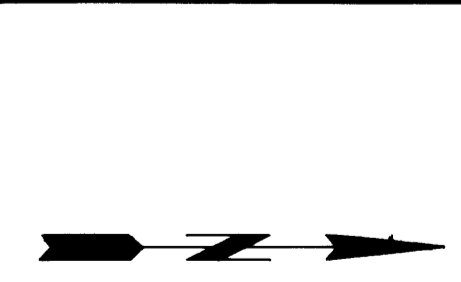


SUBJECT TO PROTECTIVE COVENANTS AS FILED HERewith, DOUGLAS CO. CLERK'S RECORDING NUMBER 93-10159

COUNTY SURVEYORS FILE DATA DO NOT REMOVE FROM OFFICE

STEREOTYPED SURVEY
 [Signature]

EXPIRES 12-31-93



BROOKSIDE HILLS ESTATES PHASE I IN BLOCK 6 & 7 OF 2nd, BROOKSIDE ADDITION OF THE SW & SE 1/4 OF SEC. 17, T27S, R5W, W.M., DOUGLAS COUNTY, OREGON			
SURVEYED FOR: CITY OF ROSEBURG 900 SE DOUGLAS ROSEBURG, OR. 97470		SURVEYED BY: i.e. ENGINEERING 1205 SE COURT ROSEBURG, OR. 97470 (503) 673-0166	
SCALE: 1"=60'	DATE: APR, 1993	CN: 0149 JN: 01	PAGE: 3 OF 6

93-10160