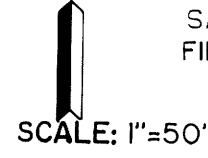
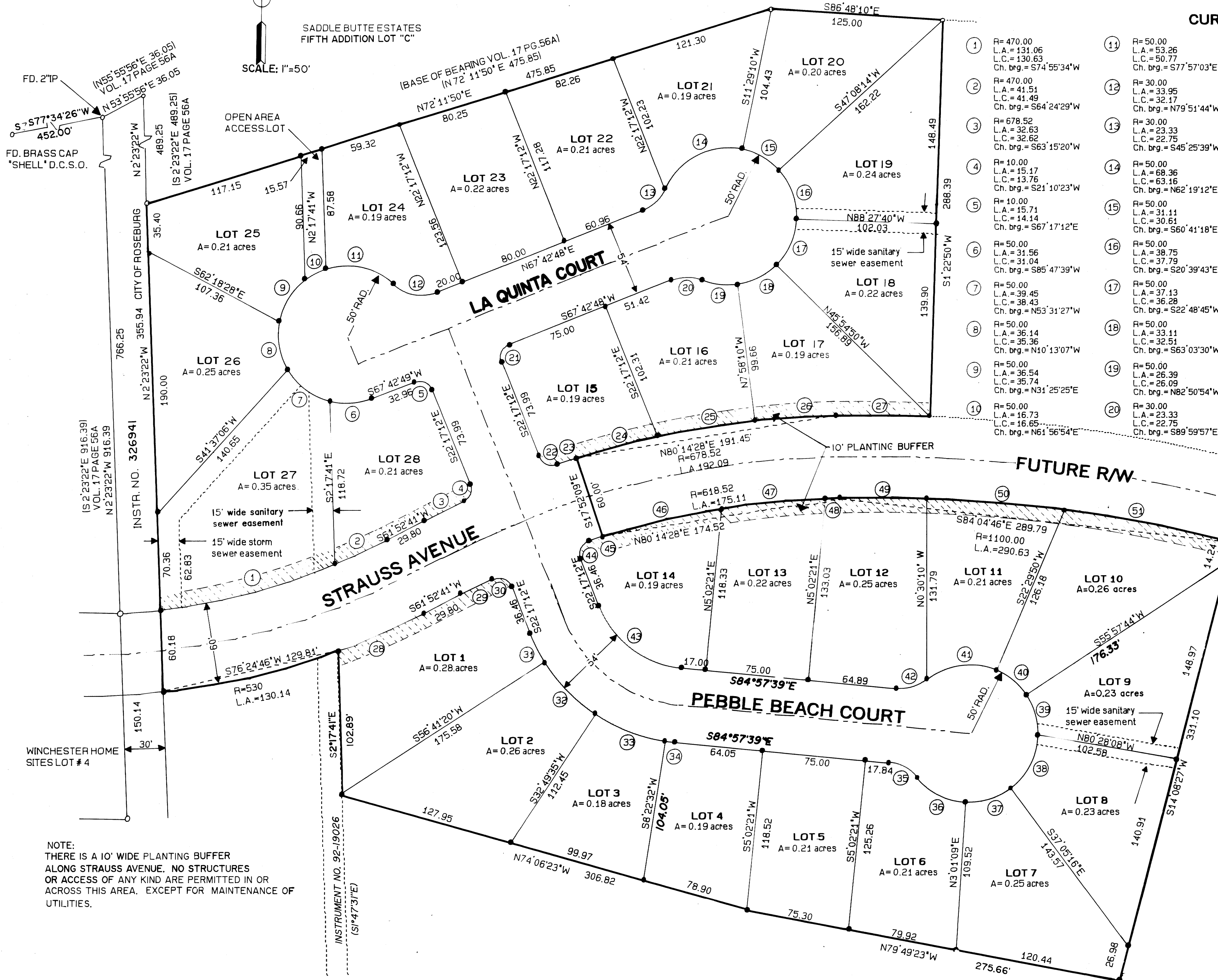


SADDLE BUTTE RANCH SUBDIVISION PHASE 1

(IN THE SE. 1/4 OF SEC. 25, T26S, R6W, W.M., DOUGLAS COUNTY, OREGON)



SADDLE BUTTE ESTATES
FIFTH ADDITION LOT "C"

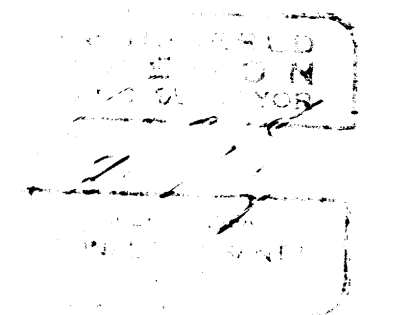


CURVE DATA

1	R=470.00 L.A.=131.06 L.C.=130.63 Ch. brg.=S74°55'34"W	11	R=50.00 L.A.=53.26 L.C.=50.77 Ch. brg.=S77°57'03"E	21	R=10.00 L.A.=15.71 L.C.=14.14 Ch. brg.=N22°42'48"E	37	R=50.00 L.A.=35.00 L.C.=34.29 Ch. brg.=S72°57'57"W
2	R=470.00 L.A.=41.51 L.C.=41.49 Ch. brg.=S64°24'29"W	12	R=30.00 L.A.=33.95 L.C.=32.17 Ch. brg.=N79°51'44"W	22	R=10.00 L.A.=15.17 L.C.=13.76 Ch. brg.=N65°44'48"W	38	R=50.00 L.A.=45.38 L.C.=43.84 Ch. brg.=S26°54'31"W
3	R=678.52 L.A.=32.63 L.C.=32.62 Ch. brg.=S63°15'20"W	13	R=30.00 L.A.=23.33 L.C.=22.75 Ch. brg.=S45°25'39"W	23	R=678.52 L.A.=15.83 L.C.=15.83 Ch. brg.=N71°27'44"E	39	R=50.00 L.A.=30.49 L.C.=30.02 Ch. brg.=S16°33'59"E
4	R=10.00 L.A.=15.17 L.C.=13.76 Ch. brg.=S21°10'23"W	14	R=50.00 L.A.=68.36 L.C.=63.16 Ch. brg.=N62°19'12"E	24	R=678.52 L.A.=60.20 L.C.=60.18 Ch. brg.=N74°40'21"E	40	R=50.00 L.A.=29.20 L.C.=28.79 Ch. brg.=S50°46'13"E
5	R=10.00 L.A.=15.71 L.C.=14.14 Ch. brg.=S67°17'12"E	15	R=50.00 L.A.=31.11 L.C.=30.61 Ch. brg.=S60°41'18"E	25	R=678.52 L.A.=72.30 L.C.=72.27 Ch. brg.=N80°16'01"E	41	R=50.00 L.A.=54.12 L.C.=51.52 Ch. brg.=N81°29'19"E
6	R=50.00 L.A.=31.56 L.C.=31.04 Ch. brg.=S85°47'39"W	16	R=50.00 L.A.=38.75 L.C.=37.79 Ch. brg.=S20°39'43"E	26	R=678.52 L.A.=59.59 L.C.=59.57 Ch. brg.=N85°50'08"E	42	R=30.00 L.A.=23.33 L.C.=22.75 Ch. brg.=S72°45'12"W
7	R=50.00 L.A.=39.45 L.C.=38.43 Ch. brg.=N53°31'27"W	17	R=50.00 L.A.=37.13 L.C.=36.28 Ch. brg.=S22°48'45"W	27	R=1160.00 L.A.=68.46 L.C.=68.45 Ch. brg.=S89°57'28"E	43	R=70.00 L.A.=79.85 L.C.=75.93 Ch. brg.=N53°37'26"W
8	R=50.00 L.A.=36.14 L.C.=35.36 Ch. brg.=N10°13'07"W	18	R=50.00 L.A.=33.11 L.C.=32.51 Ch. brg.=S63°03'30"W	28	R=530.00 L.A.=69.38 L.C.=69.33 Ch. brg.=S65°37'42"W	44	R=10.00 L.A.=16.32 L.C.=14.57 Ch. brg.=N24°27'23"E
9	R=50.00 L.A.=36.54 L.C.=35.74 Ch. brg.=N31°25'25"E	19	R=50.00 L.A.=26.39 L.C.=26.09 Ch. brg.=N82°50'54"W	29	R=618.52 L.A.=25.36 L.C.=25.36 Ch. brg.=S63°03'09"W	45	R=618.52 L.A.=10.06 L.C.=10.06 Ch. brg.=N71°40'02"E
10	R=50.00 L.A.=16.73 L.C.=16.65 Ch. brg.=N61°56'54"E	20	R=30.00 L.A.=23.33 L.C.=22.75 Ch. brg.=S89°59'57"E	30	R=10.00 L.A.=16.32 L.C.=14.57 Ch. brg.=S89°01'47"E	46	R=618.52 L.A.=89.34 L.C.=89.27 Ch. brg.=N76°16'08"E
				31	R=127.00 L.A.=24.44 L.C.=24.40 Ch. brg.=N27°47'56"W	47	R=618.52 L.A.=76.48 L.C.=76.43 Ch. brg.=N83°56'57"E
				32	R=127.00 L.A.=52.89 L.C.=52.51 Ch. brg.=N45°14'33"W	48	R=618.52 L.A.=9.29 L.C.=9.29 Ch. brg.=S87°55'17"W
				33	R=127.00 L.A.=54.20 L.C.=53.79 Ch. brg.=N69°23'57"W	49	R=1100.00 L.A.=64.25 L.C.=64.24 Ch. brg.=S89°58'31"E
				34	R=127.00 L.A.=7.40 L.C.=7.39 Ch. brg.=N83°17'34"W	50	R=1100.00 L.A.=100.71 L.C.=100.67 Ch. brg.=S85°40'45"E
				35	R=30.00 L.A.=23.33 L.C.=22.75 Ch. brg.=S62°40'30"E	51	R=1100.00 L.A.=125.68 L.C.=125.61 Ch. brg.=S79°46'59"E
				36	R=50.00 L.A.=40.65 L.C.=39.54 Ch. brg.=N63°41'28"W		

LEGEND

- FD 5/8" I.R. UNLESS OTHERWISE NOTED
- SET 5/8" X 30" I.R. W/CAP MARKED "i.e. ENGINEERING"



NOTE:
THERE IS A 10' WIDE PLANTING BUFFER
ALONG STRAUSS AVENUE. NO STRUCTURES
OR ACCESS OF ANY KIND ARE PERMITTED IN OR
ACROSS THIS AREA, EXCEPT FOR MAINTENANCE OF
UTILITIES.

COUNTY SURVEYORS FILE DATA
DO NOT REMOVE FROM OFFICE

VOL. 17 PAGE 61A

VOL. 17 PAGE 61A