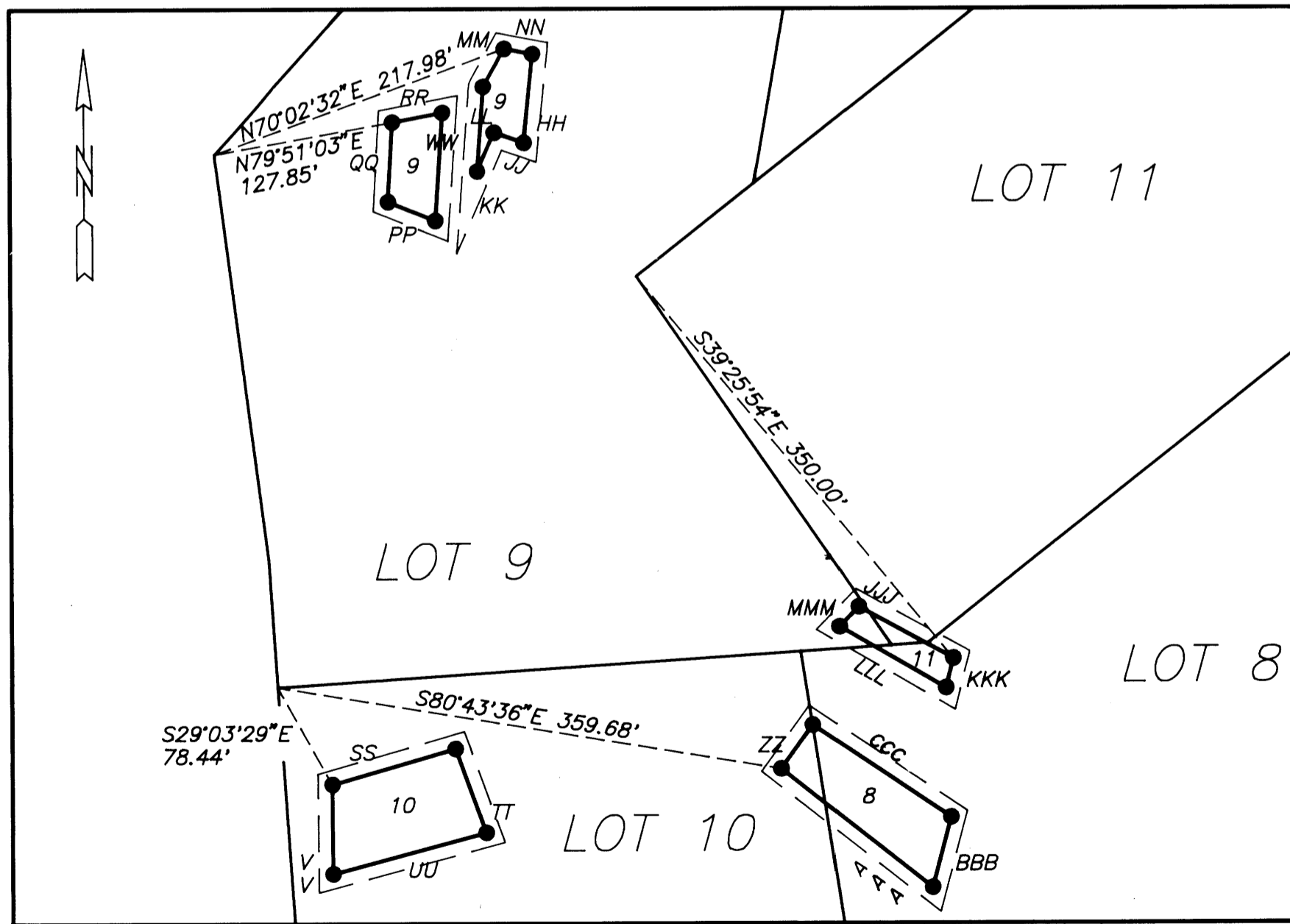
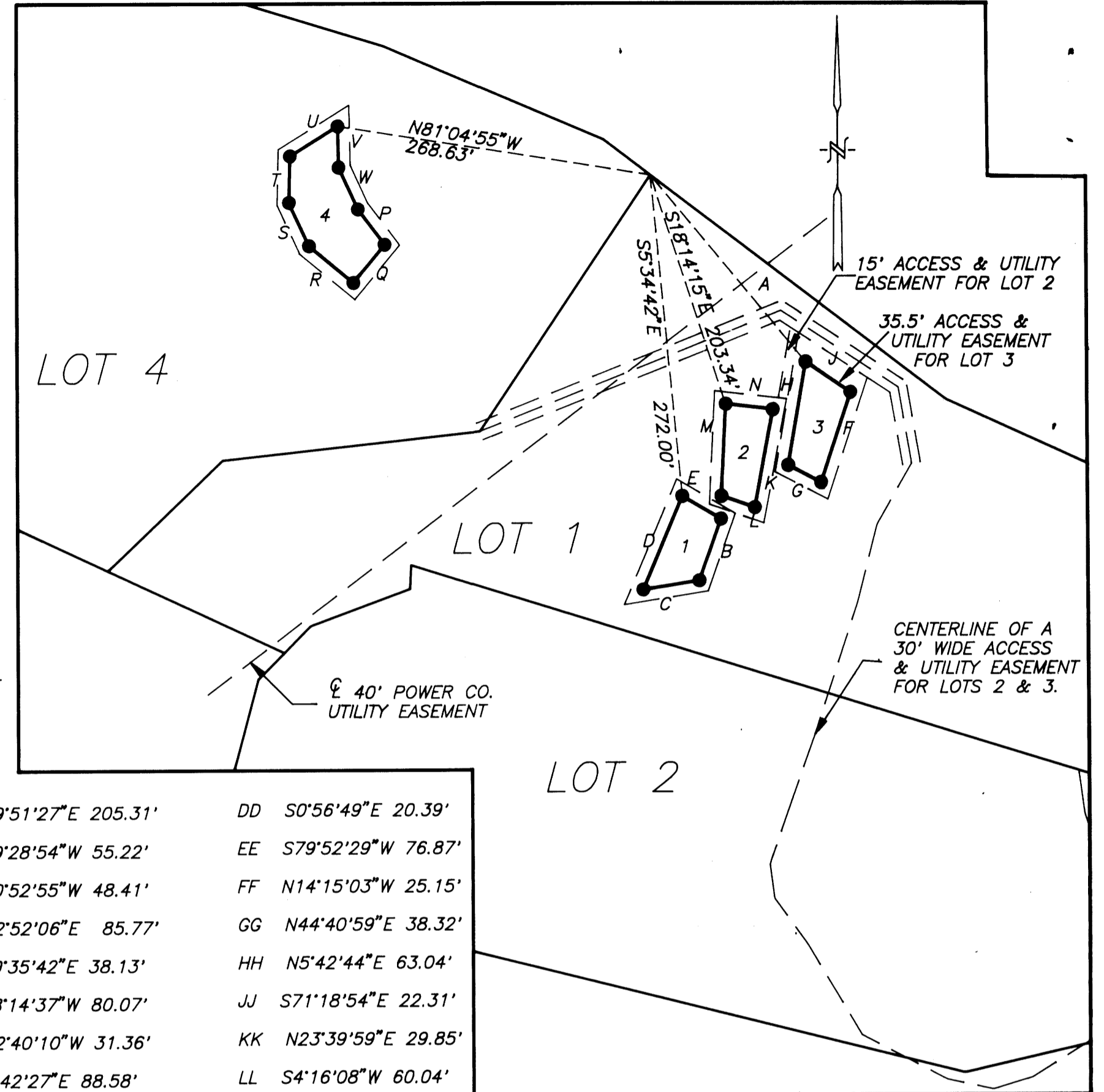


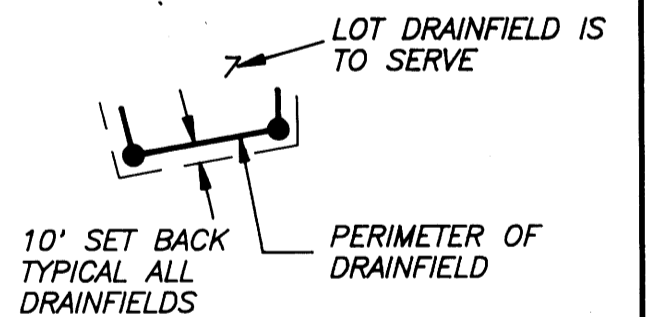
SHOWN HEREON ARE DRAINFIELD SITES AND APPROPRIATE EASEMENTS. EACH DRAINFIELD IS NUMBERED TO REPRESENT EACH LOT BENEFITTED. ALL DRAINFIELDS OFF RESPECTIVE LOT ARE HEREON DEDICATED AS EASEMENTS TO THE BENEFITTED LOT.



NOTE:
COURSES SHOWN DEFINE PERIMETER OF DRAINFIELD SETBACK.

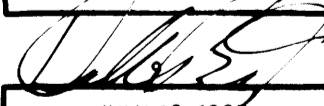
Vol 17 Pa 57
A-B
92-17797

- A S39°51'27"E 205.31'
- B S19°28'54"W 55.22'
- C S80°52'55"W 48.41'
- D N22°52'06"E 85.77'
- E S59°35'42"E 38.13'
- F S18°14'37"W 80.07'
- G N62°40'10"W 31.36'
- H N9°42'27"E 88.58'
- J S55°57'56"E 45.84'
- K N9°58'11"E 80.97'
- L S76°38'08"E 30.49'
- M S2°47'42"W 77.51'
- N S83°15'44"E 40.18'
- P S37°04'59"E 37.57'
- Q S39°39'57"W 41.57'
- R N50°38'03"W 48.71'
- S N24°46'08"W 40.47'
- T N1°19'05"E 39.18'
- U N58°09'50"E 47.74'
- V S1°13'46"E 34.79'
- W S24°48'12"E 38.83'
- X S39°02'28"E 78.84'
- Y N70°44'38"W 83.81'
- Z N63°44'43"W 78.61'
- AA S89°19'18"E 99.98'
- BB N76°04'25"E 86.35'
- CC S37°12'04"W 48.34'
- DD S0°56'49"E 20.39'
- EE S79°52'29"W 76.87'
- FF N14°15'03"W 25.15'
- GG N44°40'59"E 38.32'
- HH N5°42'44"E 63.04'
- JJ S71°18'54"E 22.31'
- KK N23°39'59"E 29.85'
- LL S4°16'08"W 60.04'
- MM S28°55'41"W 30.60'
- NN N79°28'42"W 20.46'
- PP N68°16'01"W 35.87'
- QQ N3°15'37"E 56.28'
- RR N79°18'55"E 35.99'
- SS N73°59'27"E 90.54'
- TT S19°59'46"E 63.03'
- UU S75°00'34"W 112.02'
- VV N0°20'24"W 63.23'
- WW S3°56'36"W 76.33'
- DD S0°56'49"E 20.39'
- EE S79°52'29"W 76.87'
- FF N14°15'03"W 25.15'
- GG N44°40'59"E 38.32'
- HH N5°42'44"E 63.04'
- JJ S71°18'54"E 22.31'
- KK N23°39'59"E 29.85'
- LL S4°16'08"W 60.04'
- MM S28°55'41"W 30.60'
- NN N79°28'42"W 20.46'
- PP N68°16'01"W 35.87'
- QQ N3°15'37"E 56.28'
- RR N79°18'55"E 35.99'
- SS N73°59'27"E 90.54'
- TT S19°59'46"E 63.03'
- UU S75°00'34"W 112.02'
- VV N0°20'24"W 63.23'
- WW S3°56'36"W 76.33'
- ZZ N33°49'09"E 37.18'
- AAA S51°43'54"E 135.67'
- BBB N14°53'04"E 51.48'
- CCC N56°39'21"W 118.56'
- EEE N89°11'19"E 80.56'
- FFF S3°28'34"W 36.10'
- GGG S86°23'40"W 78.66'
- HHH N0°11'29"E 39.84'
- JJJ S61°23'30"E 76.11'
- KKK S14°01'42"W 21.61'
- LLL N59°57'10"W 86.71'
- MMM N43°55'12"E 19.43'



LEGEND:
 ○ FD. 5/8" I.R. UNLESS OTHERWISE NOTED.
 ● SET 5/8" x 30" I.R. W/ CAP MARKED "i.e. ENGINEERING."

92-17797

WILLINDA RIDGE SUBDIVISION IN THE NE 1/4 AND SE 1/4 OF SECTION 2, TOWNSHIP 27 SOUTH, RANGE 6 WEST, WILLAMETTE MERIDIAN, DOUGLAS COUNTY, OREGON			
REGISTERED OREGON LAND SURVEYOR  JULY 12, 1968 DONALD A. BENTZ 839	SURVEYED FOR : DR. WILLIAM I. & LINDA K. CALHOUN 799 MOOREA DRIVE ROSEBURG, OREGON	SURVEYED BY : i.e. ENGINEERING INC. 1205 S.E. COURT STREET ROSEBURG, OREGON 97470 (503)673-0166	
DATE: FEB., 1992	SCALE: 1" = 100'	C.N. 289 J.N. 01	PAGE 3 OF 3

COUNTY SURVEYORS FILE DATA
DO NOT REMOVE FROM OFFICE