

SOUTH FORK RANCH SUBDIVISION

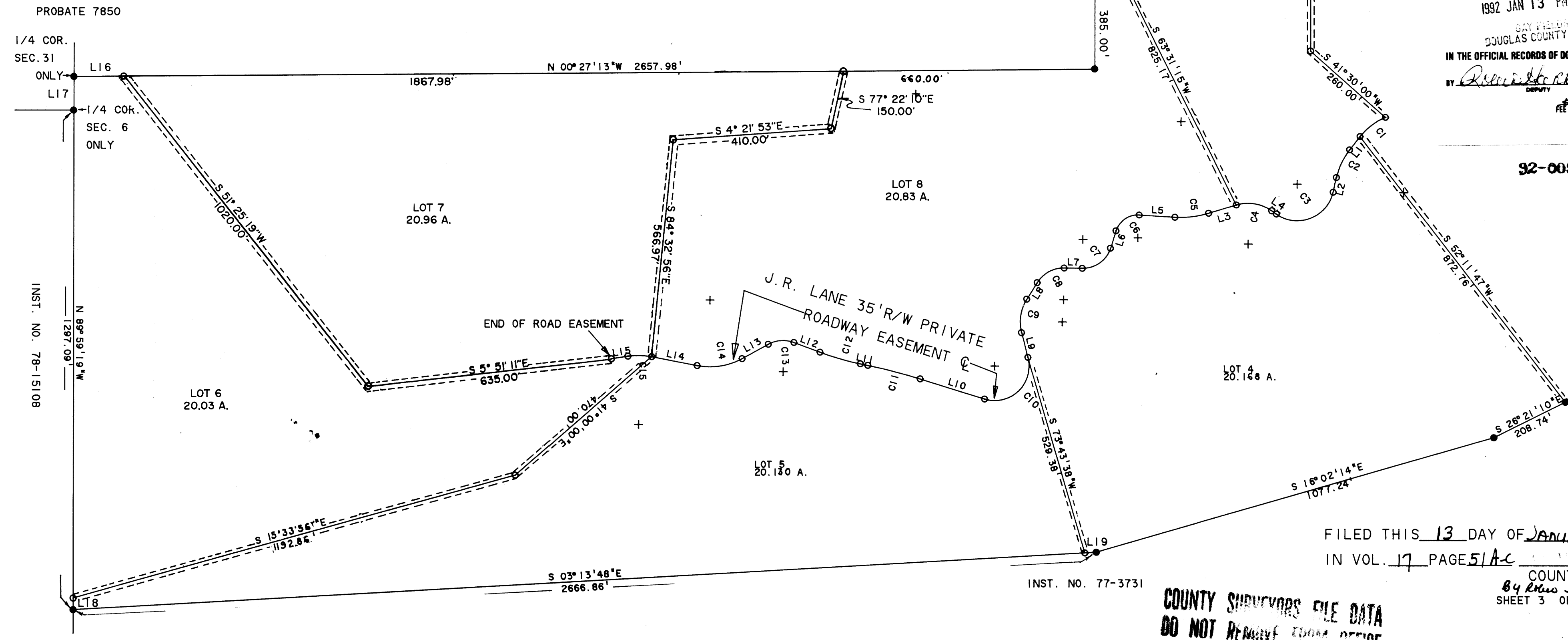
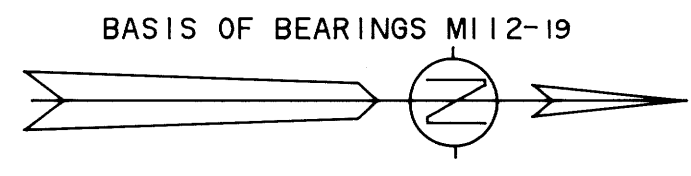
IN THE N.W., N.E. & S.E. 1/4'S OF SECTION 31 AND THE
S.W. 1/4 OF SECTION 30, T. 27S., R. 5W., W.M.

JANUARY 1991 SCALE 1" = 200'

LINE	BEARING	DISTANCE
L 1	S 51° 36' 26" E	43.83'
L 2	S 77° 26' 08" E	38.88'
L 3	S 16° 41' 57" E	75.41'
L 4	S 35° 21' 12" W	14.70'
L 5	S 03° 37' 48" W	93.21'
L 6	S 72° 10' 33" E	47.41'
L 7	S 01° 04' 53" W	47.48'
L 8	S 57° 24' 26" E	50.57'
L 9	N 75° 26' 54" E	66.43'
L 10	S 17° 17' 07" W	175.68'
L 11	S 11° 39' 18" W	19.82'
L 12	S 20° 25' 36" W	72.60'
L 13	S 28° 43' 48" E	77.95'
L 14	S 11° 04' 23" W	120.73'
L 15	S 08° 50' 48" E	43.30'
L 16	N 00° 27' 13" W	130.00'
L 17	N 89° 15' 45" W	87.52'
L 18	N 89° 59' 19" W	30.00'
L 19	S 03° 13' 48" E	30.00'

LEGEND:
 ○ = SET 5/8" X 30" I.R. W/PL CAP MK'D BAUGHMAN TECH SERV
 ● = FD. MONUMENTS AS PER M112-19
 NOTE: ALL EXTERIOR CALLS ARE RECORD OF M112-19
 NOTE: ALL INTERIOR LOT LINES ARE CENTERED ON A 20 FT. UTILITY EASEMENT

CURVE	DELTA ANGLE	RADIUS	ARC	TANGENT	CHORD	CHORD BEARING
C 1	29° 20' 02"	163.70'	83.81'	42.85'	82.90'	S 36° 56' 25" E
C 2	25° 49' 41"	179.05'	80.71'	41.05'	80.03'	S 64° 31' 17" E
C 3	112° 47' 20"	95.49'	187.98'	143.70'	159.07'	N 21° 02' 28" W
C 4	52° 03' 10"	106.10'	96.39'	51.81'	93.11'	S 09° 19' 37" W
C 5	20° 19' 46"	249.11'	88.39'	44.66'	87.93'	S 06° 32' 04" E
C 6	75° 48' 21"	59.68'	78.96'	46.47'	73.33'	S 34° 16' 23" E
C 7	73° 15' 28"	75.39'	96.39'	56.05'	89.96'	S 35° 32' 49" E
C 8	58° 29' 20"	81.85'	83.56'	45.83'	79.97'	S 28° 09' 45" E
C 9	47° 08' 41"	110.18'	90.66'	48.07'	88.13'	S 80° 58' 46" E
C 10	121° 50' 12"	89.53'	190.37'	160.97'	156.48'	S 43° 38' 00" E
C 11	05° 37' 44"	1432.39'	140.72'	70.42'	140.67'	S 14° 28' 15" W
C 12	08° 46' 14"	716.20'	109.63'	54.92'	109.52'	S 16° 02' 29" W
C 13	49° 09' 24"	80.70'	69.23'	36.91'	67.13'	S 04° 09' 06" E
C 14	39° 48' 11"	173.62'	120.62'	62.86'	118.20'	S 08° 49' 42" E
C 15	19° 55' 11"	179.05'	62.25'	31.44'	61.94'	S 01° 06' 47" W



INST. NO. 82-12907

N 00° 02' 50" W 749.83'

562.24'

N 89° 56' 23" W 1047.20'

1432.20'

LOT 11
20.914 A.

N 89° 56' 23" W
1386.10'

REGISTERED PROFESSIONAL LAND SURVEYOR
Glenn S. Baughman
 OREGON
 JULY 14, 1981
 GLENN S. BAUGHMAN
 536

STATE OF OREGON)
 COUNTY OF DOUGLAS) SS.
 I, GAY FIELDS, COUNTY CLERK AND RECORDER
 OF CONVEYANCES, DO HEREBY CERTIFY THAT
 THIS INSTRUMENT WAS RECORDED
 1992 JAN 13 PM 2:35
 GAY FIELDS
 DOUGLAS COUNTY CLERK
 IN THE OFFICIAL RECORDS OF DOUGLAS COUNTY
 BY *Glenn S. Baughman*
 DEPUTY
 #20 *pl*

92-00566

FILED THIS 13 DAY OF JANUARY 1992
 IN VOL. 17 PAGE 51A-C

**COUNTY SURVEYORS FILE DATA
 DO NOT REMOVE FROM RECORD**

COUNTY CLERK
 Gay Fields
 SHEET 3 OF 3