

SOUTH FORK RANCH SUBDIVISION  
IN THE NE, NW, & SE 1/4'S OF SEC. 31  
& THE SW 1/4 OF SEC. 30, T.27S, R.5W., W.M.

JANUARY, 1991 SCALE 1"=200'

LEGEND:

- = SET 5/8"X30' I.R. W/PL CAP MK'D BAUGHMAN TECH. SERV.
  - = FD. MONUMENTS AS PER M112-19
  - ⊕ = POINT CALCULATED NOT SET
- NOTE: ALL EXTERIOR CALLS ARE RECORD AS PER M112-19

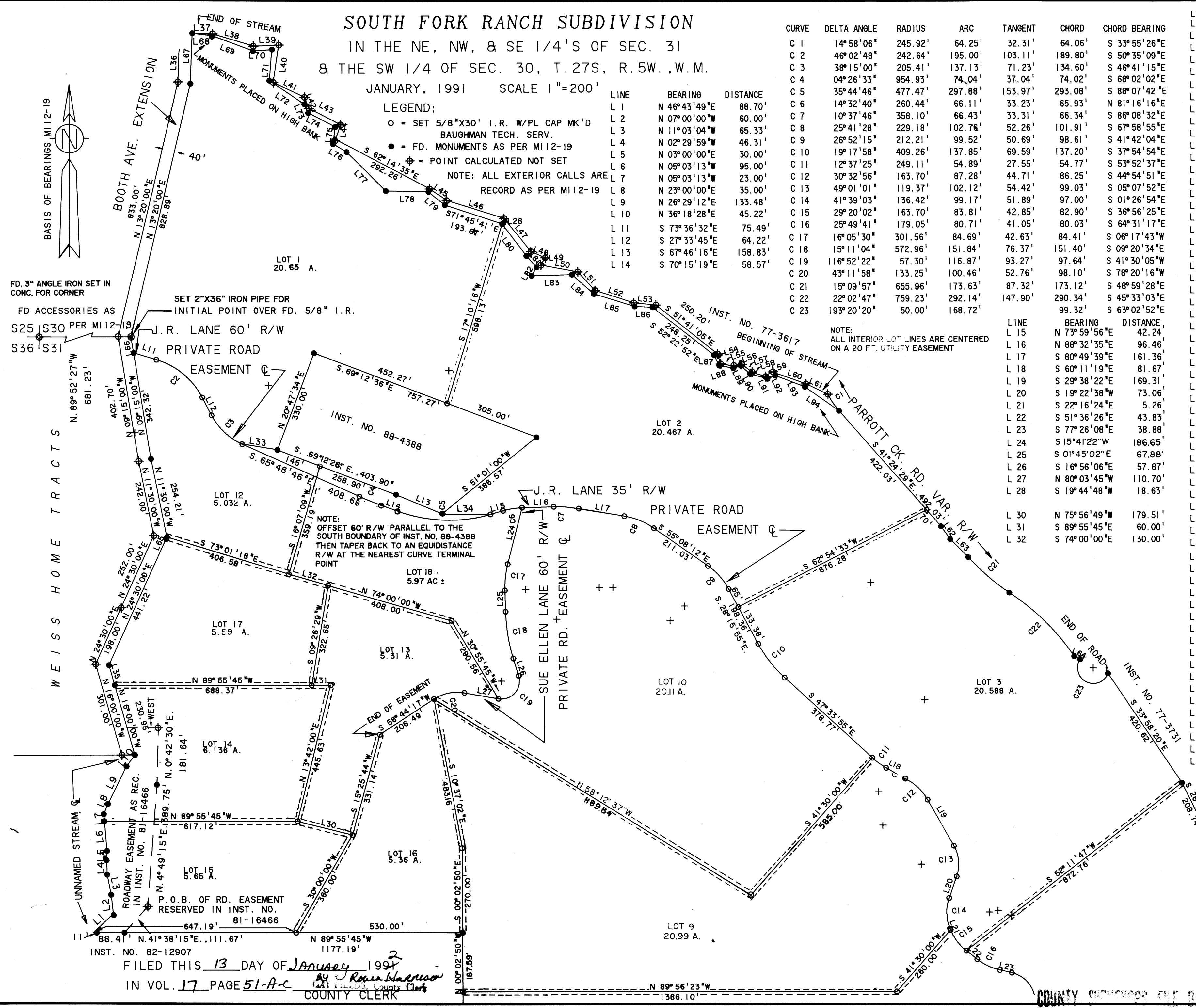
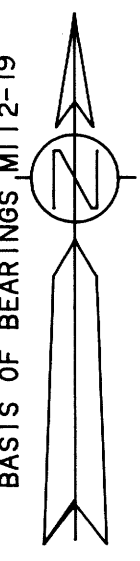
LINE	BEARING	DISTANCE
L 1	N 46°43'49"E	88.70'
L 2	N 07°00'00"W	60.00'
L 3	N 11°03'04"W	65.33'
L 4	N 02°29'59"W	46.31'
L 5	N 03°00'00"E	30.00'
L 6	N 05°03'13"W	95.00'
L 7	N 05°03'13"W	23.00'
L 8	N 23°00'00"E	35.00'
L 9	N 26°29'12"E	133.48'
L 10	N 36°18'28"E	45.22'
L 11	S 73°36'32"E	75.49'
L 12	S 27°33'45"E	64.22'
L 13	S 67°46'16"E	158.83'
L 14	S 70°15'19"E	58.57'

CURVE	DELTA ANGLE	RADIUS	ARC	TANGENT	CHORD	CHORD BEARING
C 1	14°58'06"	245.92'	64.25'	32.31'	64.06'	S 33°55'26"E
C 2	46°02'48"	242.64'	195.00'	103.11'	189.80'	S 50°35'09"E
C 3	38°15'00"	205.41'	137.13'	71.23'	134.60'	S 46°41'15"E
C 4	04°26'33"	954.93'	74.04'	37.04'	74.02'	S 68°02'02"E
C 5	35°44'46"	477.47'	297.88'	153.97'	293.08'	S 88°07'42"E
C 6	14°32'40"	260.44'	66.11'	33.23'	65.93'	N 81°16'16"E
C 7	10°37'46"	358.10'	66.43'	33.31'	66.34'	S 86°08'32"E
C 8	25°41'28"	229.18'	102.76'	52.26'	101.91'	S 67°58'55"E
C 9	26°52'15"	212.21'	99.52'	50.69'	98.61'	S 41°42'04"E
C 10	19°17'58"	409.26'	137.85'	69.59'	137.20'	S 37°54'54"E
C 11	12°37'25"	249.11'	54.89'	27.55'	54.77'	S 53°52'37"E
C 12	30°32'56"	163.70'	87.28'	44.71'	86.25'	S 44°54'51"E
C 13	49°01'01"	119.37'	102.12'	54.42'	99.03'	S 05°07'52"E
C 14	41°39'03"	136.42'	99.17'	51.89'	97.00'	S 01°26'54"E
C 15	29°20'02"	163.70'	83.81'	42.85'	82.90'	S 36°56'25"E
C 16	25°49'41"	179.05'	80.71'	41.05'	80.03'	S 64°31'17"E
C 17	16°05'30"	301.56'	84.69'	42.63'	84.41'	S 06°17'43"W
C 18	15°11'04"	572.96'	151.84'	76.37'	151.40'	S 09°20'34"E
C 19	116°52'22"	57.30'	116.87'	93.27'	97.64'	S 41°30'05"W
C 20	43°11'58"	133.25'	100.46'	52.76'	98.10'	S 78°20'16"W
C 21	15°09'57"	655.96'	173.63'	87.32'	173.12'	S 48°59'28"E
C 22	22°02'47"	759.23'	292.14'	147.90'	290.34'	S 45°33'03"E
C 23	193°20'20"	50.00'	168.72'		99.32'	S 63°02'52"E

LINE	BEARING	DISTANCE
L 33	N 80°49'32"W	113.48'
L 34	N 88°54'02"W	152.89'
L 35	N 16°00'00"W	66.77'
L 36	N 02°15'00"E	104.56'
L 37	S 88°10'30"E	64.75'
L 38	S 73°07'36"E	135.97'
L 39	N 87°32'20"E	81.03'
L 40	S 08°35'35"W	120.71'
L 41	S 64°34'13"E	110.67'
L 42	S 21°56'13"E	37.67'
L 43	S 38°37'14"E	132.03'
L 44	S 68°10'44"E	46.05'
L 45	S 55°19'52"E	65.32'
L 46	S 72°34'12"E	191.97'
L 47	S 38°51'00"E	136.09'
L 48	S 66°44'18"E	49.37'
L 49	S 29°56'48"W	27.31'
L 50	S 79°38'28"E	120.14'
L 51	S 42°35'58"E	80.85'
L 52	S 72°18'59"E	130.25'
L 53	S 84°12'46"E	71.13'
L 54	S 17°50'44"E	33.52'
L 55	S 78°47'07"E	38.71'
L 56	N 80°23'52"E	30.02'
L 57	S 53°05'27"E	44.68'
L 58	S 73°19'22"E	42.08'
L 59	N 48°16'24"E	23.37'
L 60	S 70°34'44"E	117.64'
L 61	S 64°38'39"E	77.41'
L 62	S 35°41'51"E	50.25'
L 63	S 44°56'38"E	81.07'
L 64	S 62°49'49"E	21.09'
L 65	N 24°30'00"E	7.02'
L 66	N 09°15'00"W	51.91'
L 67	N 02°15'00"E	161.07'
L 68	S 82°33'12"E	65.09'
L 69	S 69°23'59"E	137.50'
L 70	S 16°56'06"E	57.87'
L 71	N 80°03'45"W	110.70'
L 72	S 56°01'37"E	134.78'
L 73	S 23°43'28"E	30.26'
L 74	S 62°30'00"E	96.40'
L 75	S 07°36'41"W	54.34'
L 76	S 59°20'58"E	50.83'
L 77	S 45°09'15"E	175.69'
L 78	S 88°56'06"E	135.48'
L 79	S 50°15'33"E	66.69'
L 80	S 37°06'47"E	127.82'
L 81	S 41°46'30"E	49.10'
L 82	S 30°59'48"W	31.36'
L 83	N 88°21'20"E	129.06'
L 84	S 48°26'20"E	93.15'
L 85	S 72°49'07"E	136.50'
L 86	S 87°07'02"E	57.12'
L 87	S 26°29'42"E	37.98'
L 88	S 79°23'26"E	45.21'
L 89	N 71°10'15"E	24.90'
L 90	S 48°54'21"E	40.53'
L 91	S 74°25'23"E	56.74'
L 92	N 67°33'20"E	27.12'
L 93	S 69°01'40"E	101.47'
L 94	S 54°52'53"E	133.43'

NOTE: ALL INTERIOR LOT LINES ARE CENTERED ON A 20 FT. UTILITY EASEMENT

LINE	BEARING	DISTANCE
L 15	N 73°59'56"E	42.24'
L 16	N 88°32'35"E	96.46'
L 17	S 80°49'39"E	161.36'
L 18	S 60°11'19"E	81.67'
L 19	S 29°38'22"E	169.31'
L 20	S 19°22'38"W	73.06'
L 21	S 22°16'24"E	5.26'
L 22	S 51°36'26"E	43.83'
L 23	S 77°26'08"E	38.88'
L 24	S 15°41'22"W	186.65'
L 25	S 01°45'02"E	67.88'
L 26	S 16°56'06"E	57.87'
L 27	S 19°44'48"W	18.63'
L 30	N 75°56'49"W	179.51'
L 31	S 89°55'45"E	60.00'
L 32	S 74°00'00"E	130.00'



FILED THIS 13 DAY OF January 1991  
IN VOL. 17 PAGE 51-A-C  
BY J. Ross Blarsson  
COUNTY CLERK

REGISTERED PROFESSIONAL LAND SURVEYOR  
*Glenn S. Baughman*  
 OREGON  
 JULY 14, 1981  
 GLENN S. BAUGHMAN  
 536

COUNTY SURVEYOR FILE DATA  
DO NOT REMOVE FROM OFFICE