

SOUTH FORK RANCH SUBDIVISION

IN THE NE, NW, & SE 1/4'S OF SEC. 31
& THE SW 1/4 OF SEC. 30, T.27S, R.5W., W.M.

JANUARY, 1991 SCALE 1"=200'

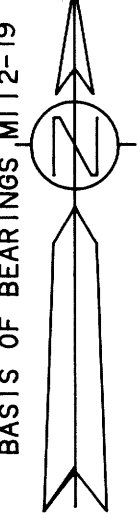
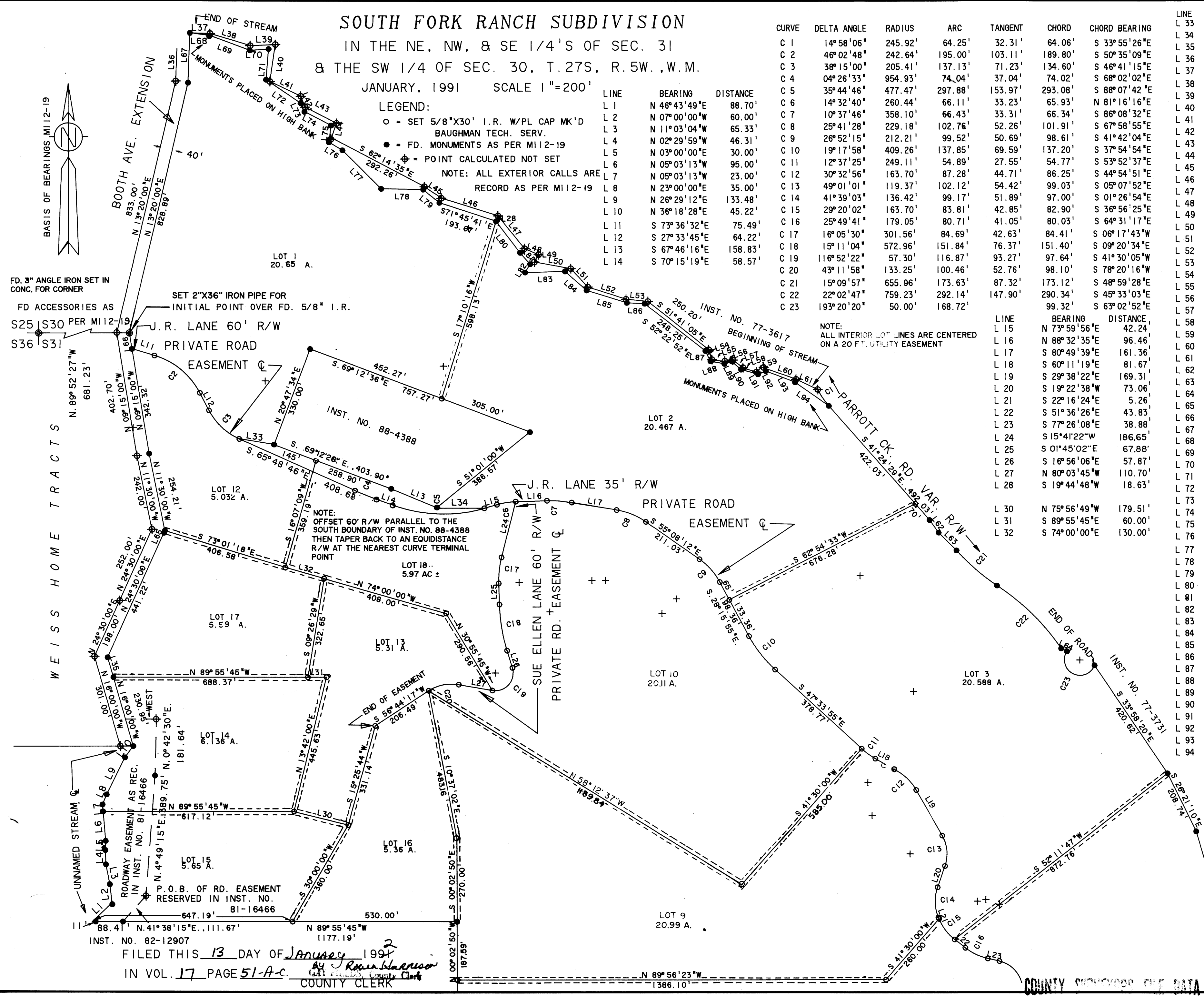
LEGEND:
○ = SET 5/8"X30' I.R. W/PL CAP MK'D
BAUGHMAN TECH. SERV.
● = FD. MONUMENTS AS PER M112-19
⊕ = POINT CALCULATED NOT SET
NOTE: ALL EXTERIOR CALLS ARE
RECORD AS PER M112-19

LINE	BEARING	DISTANCE
L 1	N 46°43'49"E	88.70'
L 2	N 07°00'00"W	60.00'
L 3	N 11°03'04"W	65.33'
L 4	N 02°29'59"W	46.31'
L 5	N 03°00'00"E	30.00'
L 6	N 05°03'13"W	95.00'
L 7	N 05°03'13"W	23.00'
L 8	N 23°00'00"E	35.00'
L 9	N 26°29'12"E	133.48'
L 10	N 36°18'28"E	45.22'
L 11	S 73°36'32"E	75.49'
L 12	S 27°33'45"E	64.22'
L 13	S 67°46'16"E	158.83'
L 14	S 70°15'19"E	58.57'

CURVE	DELTA ANGLE	RADIUS	ARC	TANGENT	CHORD	CHORD BEARING
C 1	14°58'06"	245.92'	64.25'	32.31'	64.06'	S 33°55'26"E
C 2	46°02'48"	242.64'	195.00'	103.11'	189.80'	S 50°35'09"E
C 3	38°15'00"	205.41'	137.13'	71.23'	134.60'	S 46°41'15"E
C 4	04°26'33"	954.93'	74.04'	37.04'	74.02'	S 68°02'02"E
C 5	35°44'46"	477.47'	297.88'	153.97'	293.08'	S 88°07'42"E
C 6	14°32'40"	260.44'	66.11'	33.23'	65.93'	N 81°16'16"E
C 7	10°37'46"	358.10'	66.43'	33.31'	66.34'	S 86°08'32"E
C 8	25°41'28"	229.18'	102.76'	52.26'	101.91'	S 67°58'55"E
C 9	26°52'15"	212.21'	99.52'	50.69'	98.61'	S 41°42'04"E
C 10	19°17'58"	409.26'	137.85'	69.59'	137.20'	S 37°54'54"E
C 11	12°37'25"	249.11'	54.89'	27.55'	54.77'	S 53°52'37"E
C 12	30°32'56"	163.70'	87.28'	44.71'	86.25'	S 44°54'51"E
C 13	49°01'01"	119.37'	102.12'	54.42'	99.03'	S 05°07'52"E
C 14	41°39'03"	136.42'	99.17'	51.89'	97.00'	S 01°26'54"E
C 15	29°20'02"	163.70'	83.81'	42.85'	82.90'	S 36°56'25"E
C 16	25°49'41"	179.05'	80.71'	41.05'	80.03'	S 64°31'17"E
C 17	16°05'30"	301.56'	84.69'	42.63'	84.41'	S 06°17'43"W
C 18	15°11'04"	572.96'	151.84'	76.37'	151.40'	S 09°20'34"E
C 19	116°52'22"	57.30'	116.87'	93.27'	97.64'	S 41°30'05"W
C 20	43°11'58"	133.25'	100.46'	52.76'	98.10'	S 78°20'16"W
C 21	15°09'57"	655.96'	173.63'	87.32'	173.12'	S 48°59'28"E
C 22	22°02'47"	759.23'	292.14'	147.90'	290.34'	S 45°33'03"E
C 23	193°20'20"	50.00'	168.72'	99.32'	99.32'	S 63°02'52"E

LINE	BEARING	DISTANCE
L 33	N 80°49'32"W	113.48'
L 34	N 88°54'02"W	152.89'
L 35	N 16°00'00"W	66.77'
L 36	N 02°15'00"E	104.56'
L 37	S 88°10'30"E	64.75'
L 38	S 73°07'36"E	135.97'
L 39	N 87°32'20"E	81.03'
L 40	S 08°35'35"W	120.71'
L 41	S 64°34'13"E	110.67'
L 42	S 21°56'13"E	37.67'
L 43	S 38°37'14"E	132.03'
L 44	S 68°10'44"E	46.05'
L 45	S 55°19'52"E	65.32'
L 46	S 72°34'12"E	191.97'
L 47	S 38°51'00"E	136.09'
L 48	S 66°44'18"E	49.37'
L 49	S 29°56'48"W	27.31'
L 50	S 79°38'28"E	120.14'
L 51	S 42°35'58"E	80.85'
L 52	S 72°18'59"E	130.25'
L 53	S 84°12'46"E	71.13'
L 54	S 17°50'44"E	33.52'
L 55	S 78°47'07"E	38.71'
L 56	N 80°23'52"E	30.02'
L 57	S 53°05'27"E	44.68'
L 58	S 73°19'22"E	42.08'
L 59	N 48°16'24"E	23.37'
L 60	S 70°34'44"E	117.64'
L 61	S 64°38'39"E	77.41'
L 62	S 35°41'51"E	50.25'
L 63	S 44°56'38"E	81.07'
L 64	S 62°49'49"E	21.09'
L 65	N 24°30'00"E	7.02'
L 66	N 09°15'00"W	51.91'
L 67	N 02°15'00"E	161.07'
L 68	S 82°33'12"E	65.09'
L 69	S 69°23'59"E	137.50'
L 70	S 16°56'06"E	57.87'
L 71	N 80°03'45"W	110.70'
L 72	S 56°01'37"E	134.78'
L 73	S 23°43'28"E	30.26'
L 74	S 62°30'00"E	96.40'
L 75	S 07°36'41"W	54.34'
L 76	S 59°20'58"E	50.83'
L 77	S 45°09'15"E	175.69'
L 78	S 88°56'06"E	135.48'
L 79	S 50°15'33"E	66.69'
L 80	S 37°06'47"E	127.82'
L 81	S 41°46'30"E	49.10'
L 82	S 30°59'48"W	31.36'
L 83	N 88°21'20"E	129.06'
L 84	S 48°26'20"E	93.15'
L 85	S 72°49'07"E	136.50'
L 86	S 87°07'02"E	57.12'
L 87	S 26°29'42"E	37.98'
L 88	S 79°23'26"E	45.21'
L 89	N 71°10'15"E	24.90'
L 90	S 48°54'21"E	40.53'
L 91	S 74°25'23"E	56.74'
L 92	N 67°33'20"E	27.12'
L 93	S 69°01'40"E	101.47'
L 94	S 54°52'53"E	133.43'

NOTE: ALL INTERIOR LOT LINES ARE CENTERED ON A 20 FT. UTILITY EASEMENT



FILED THIS 13 DAY OF January 1991
IN VOL. 17 PAGE 51-A-C
BY J. Ross Blarsson
COUNTY CLERK

REGISTERED PROFESSIONAL LAND SURVEYOR
Glenn S. Baughman
OREGON
JULY 14, 1981
GLENN S. BAUGHMAN
536

COUNTY SURVEYOR FILE DATA
DO NOT REMOVE FROM OFFICE

SOUTH FORK RANCH SUBDIVISION

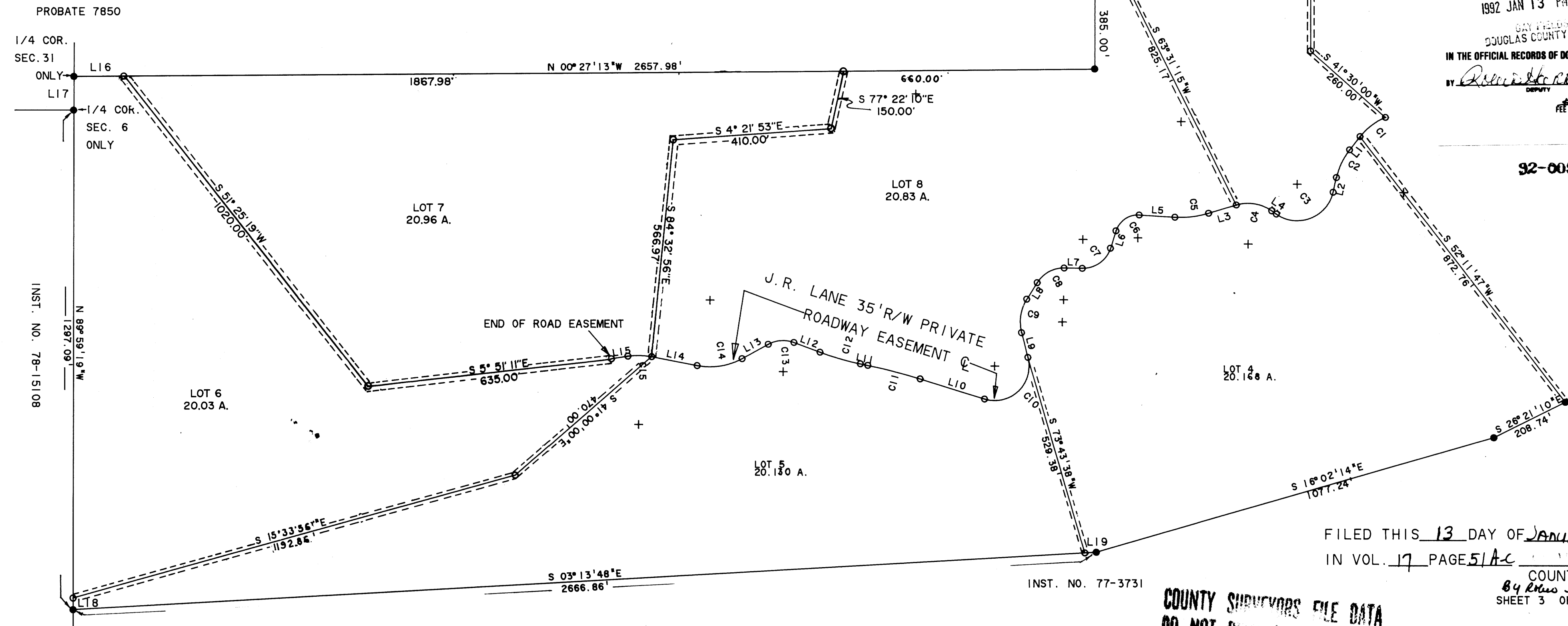
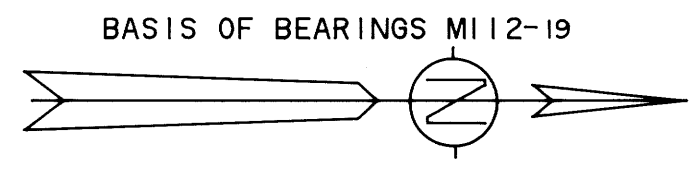
IN THE N.W., N.E. & S.E. 1/4'S OF SECTION 31 AND THE
S.W. 1/4 OF SECTION 30, T. 27S., R. 5W., W.M.

JANUARY 1991 SCALE 1" = 200'

LINE	BEARING	DISTANCE
L 1	S 51° 36' 26" E	43.83'
L 2	S 77° 26' 08" E	38.88'
L 3	S 16° 41' 57" E	75.41'
L 4	S 35° 21' 12" W	14.70'
L 5	S 03° 37' 48" W	93.21'
L 6	S 72° 10' 33" E	47.41'
L 7	S 01° 04' 53" W	47.48'
L 8	S 57° 24' 26" E	50.57'
L 9	N 75° 26' 54" E	66.43'
L 10	S 17° 17' 07" W	175.68'
L 11	S 11° 39' 18" W	19.82'
L 12	S 20° 25' 36" W	72.60'
L 13	S 28° 43' 48" E	77.95'
L 14	S 11° 04' 23" W	120.73'
L 15	S 08° 50' 48" E	43.30'
L 16	N 00° 27' 13" W	130.00'
L 17	N 89° 15' 45" W	87.52'
L 18	N 89° 59' 19" W	30.00'
L 19	S 03° 13' 48" E	30.00'

LEGEND:
 ○ = SET 5/8" X 30" I.R. W/PL CAP MK'D BAUGHMAN TECH SERV
 ● = FD. MONUMENTS AS PER M112-19
 NOTE: ALL EXTERIOR CALLS ARE RECORD OF M112-19
 NOTE: ALL INTERIOR LOT LINES ARE CENTERED ON A 20 FT. UTILITY EASEMENT

CURVE	DELTA ANGLE	RADIUS	ARC	TANGENT	CHORD	CHORD BEARING
C 1	29° 20' 02"	163.70'	83.81'	42.85'	82.90'	S 36° 56' 25" E
C 2	25° 49' 41"	179.05'	80.71'	41.05'	80.03'	S 64° 31' 17" E
C 3	112° 47' 20"	95.49'	187.98'	143.70'	159.07'	N 21° 02' 28" W
C 4	52° 03' 10"	106.10'	96.39'	51.81'	93.11'	S 09° 19' 37" W
C 5	20° 19' 46"	249.11'	88.39'	44.66'	87.93'	S 06° 32' 04" E
C 6	75° 48' 21"	59.68'	59.68'	46.47'	73.33'	S 34° 16' 23" E
C 7	73° 15' 28"	75.39'	96.39'	56.05'	89.96'	S 35° 32' 49" E
C 8	58° 29' 20"	81.85'	83.56'	45.83'	79.97'	S 28° 09' 45" E
C 9	47° 08' 41"	110.18'	90.66'	48.07'	88.13'	S 80° 58' 46" E
C 10	121° 50' 12"	89.53'	190.37'	160.97'	156.48'	S 43° 38' 00" E
C 11	05° 37' 44"	1432.39'	140.72'	70.42'	140.67'	S 14° 28' 15" W
C 12	08° 46' 14"	716.20'	109.63'	54.92'	109.52'	S 16° 02' 29" W
C 13	49° 09' 24"	80.70'	69.23'	36.91'	67.13'	S 04° 09' 06" E
C 14	39° 48' 11"	173.62'	120.62'	62.86'	118.20'	S 08° 49' 42" E
C 15	19° 55' 11"	179.05'	62.25'	31.44'	61.94'	S 01° 06' 47" W



INST. NO. 82-12907

N 00° 02' 50" W 749.83'

562.24'

N 89° 56' 23" W 1047.20'

1432.20'

385.00'

LOT 11
20.914 A.

N 89° 56' 23" W
1386.10'

**REGISTERED
PROFESSIONAL
LAND SURVEYOR**
Glenn S. Baughman
OREGON
 JULY 14, 1981
 GLENN S. BAUGHMAN
 536

STATE OF OREGON)
 COUNTY OF DOUGLAS) ss.
 I, GAY FIELDS, COUNTY CLERK AND RECORDER
 OF CONVEYANCES, DO HEREBY CERTIFY THAT
 THIS INSTRUMENT WAS RECORDED
 1992 JAN 13 PM 2:35
 GAY FIELDS
 DOUGLAS COUNTY CLERK
 IN THE OFFICIAL RECORDS OF DOUGLAS COUNTY
 BY *Glenn S. Baughman*
 DEPUTY
 #20 *pl*

92-00566

FILED THIS 13 DAY OF January 1992
 IN VOL. 17 PAGE 51A-C

**COUNTY SURVEYORS FILE DATA
DO NOT REMOVE FROM RECORD**

COUNTY CLERK
Gay Fields
 SHEET 3 OF 3