

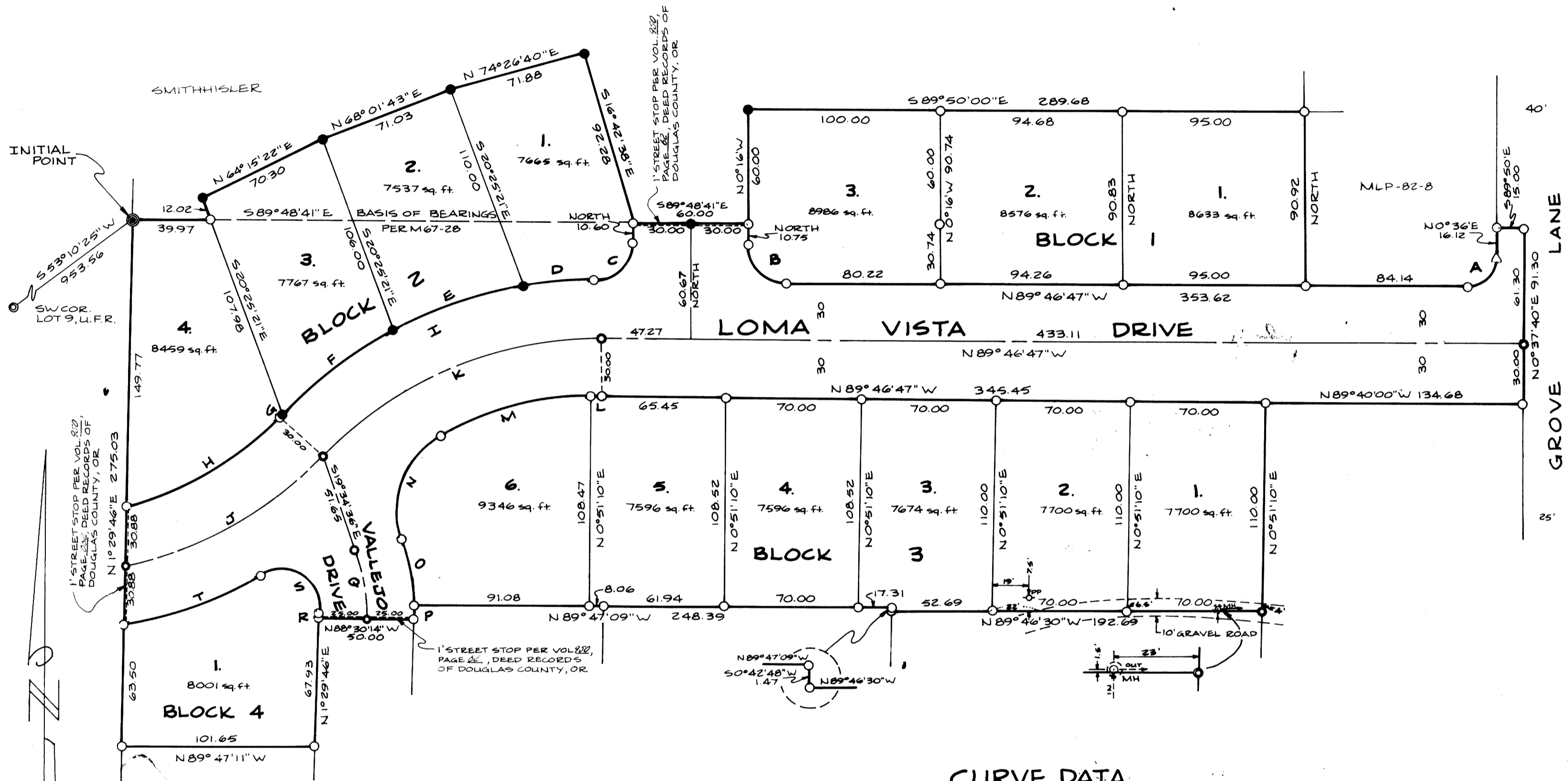
LOMA VISTA SUBDIVISION PHASE I

ADDITION TO THE CITY OF ROSEBURG

IN THE NE 1/4 SECTION 15, TOWNSHIP 27 SOUTH, RANGE 6 WEST, W.M.

APRIL 1986

SCALE: 1" = 50'



CURVE DATA

| | Δ | R | L | Chord | |
|---|------------|---------|---------|---------------|---------|
| A | 89°37'13" | 15.00' | 23.46' | N 45°25'26" E | 21.14' |
| B | 89°46'47" | 20.00' | 31.34' | N 44°53'23" W | 28.23' |
| C | 89°33'04" | 20.00' | 31.26' | S 44°46'32" W | 28.17' |
| D | 9°24'28" | 229.89' | 37.75' | N 84°50'46" E | 37.71' |
| E | 17°46'27" | 229.89' | 71.32' | N 71°15'18" E | 71.03' |
| F | 18°15'18" | 229.89' | 73.25' | N 53°14'16" E | 72.94' |
| G | 0°25'35" | 229.89' | 1.71' | N 43°53'57" E | 1.71' |
| H | 31°49'01" | 170.00' | 94.40' | N 59°35'40" E | 93.19' |
| I | 45°26'20" | 229.89' | 182.32' | S 66°49'54" W | 177.58' |
| J | 34°15'58" | 200.00' | 119.61' | N 60°49'08" E | 117.84' |
| K | 46°32'04" | 199.89' | 162.35' | N 66°57'11" E | 157.92' |
| L | 1°32'12" | 169.89' | 4.56' | S 89°27'07" W | 4.56' |
| M | 27°27'38" | 169.89' | 81.42' | N 74°57'12" E | 80.65' |
| N | 79°35'35" | 45.00' | 62.51' | N 21°26'12" E | 57.61' |
| O | 15°41'39" | 125.00' | 34.24' | N 10°30'46" W | 34.13' |
| P | 4°10'16" | 125.00' | 9.10' | S 0°35'22" E | 9.10' |
| Q | 21°04'22" | 100.00' | 36.78' | S 9°02'25" E | 36.57' |
| R | 2°00'33" | 75.00' | 2.63' | S 0°29'29" W | 2.63' |
| S | 124°49'13" | 20.00' | 43.57' | S 57°00'29" E | 35.45' |
| T | 19°09'52" | 230.00' | 76.93' | N 70°09'50" E | 76.57' |

LEGEND

- FOUND 3/8" I.R. PER M92-51
- ⊙ FOUND 3/4" I.R. PER M92-51
- ⊕ FOUND 2" I.P. PER M92-51
- SET 3/8" x 30" I.R. W/ PLASTIC CAP MKD. "AA SURVEYLING INC.
- SET BRASS CAP FOR STREET MON.
- △ PK NAIL - SET
- ⊖ PP POWER POLE
- ⊕ MH MANHOLE

BENCHMARK: SET BRASS DISK IN TOP OF CONCRETE CURB ON SE CORNER OF LOMA VISTA DRIVE AND VALLEJO DRIVE STAMPED "LV-1" ELEV. = 515.73 ELEVATION BASED ON B.M. "17-1" ELEV. = 458.81 (BRASS DISK AT SE CORNER, TROOST, CALKINS)

Notary Public section with signature of Virginia A. Laugen, Notary Public - Oregon. Includes a circular seal for Lois L. Wadsworth, County Clerk of Douglas County, Oregon, State of Oregon.

COUNTY SURVEYORS FILE DATA
DO NOT REMOVE FROM OFFICE