

# SADDLE BUTTE ESTATES, THIRD ADDITION

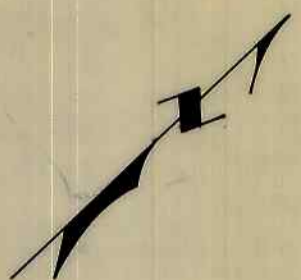
In the John Akin Donation Land Claim No. 51  
& in the SW 1/4 NW 1/4 and the NW 1/4 SW 1/4 of Section 30,  
T 26 S, R 5 W, W. M., Douglas County, Oregon

May 22, 1990

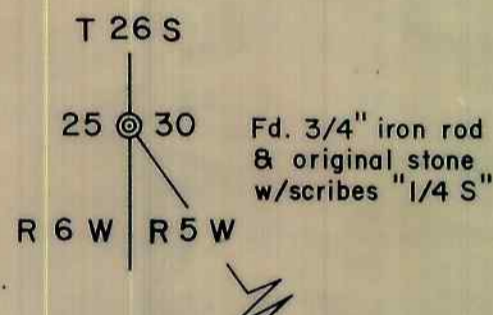
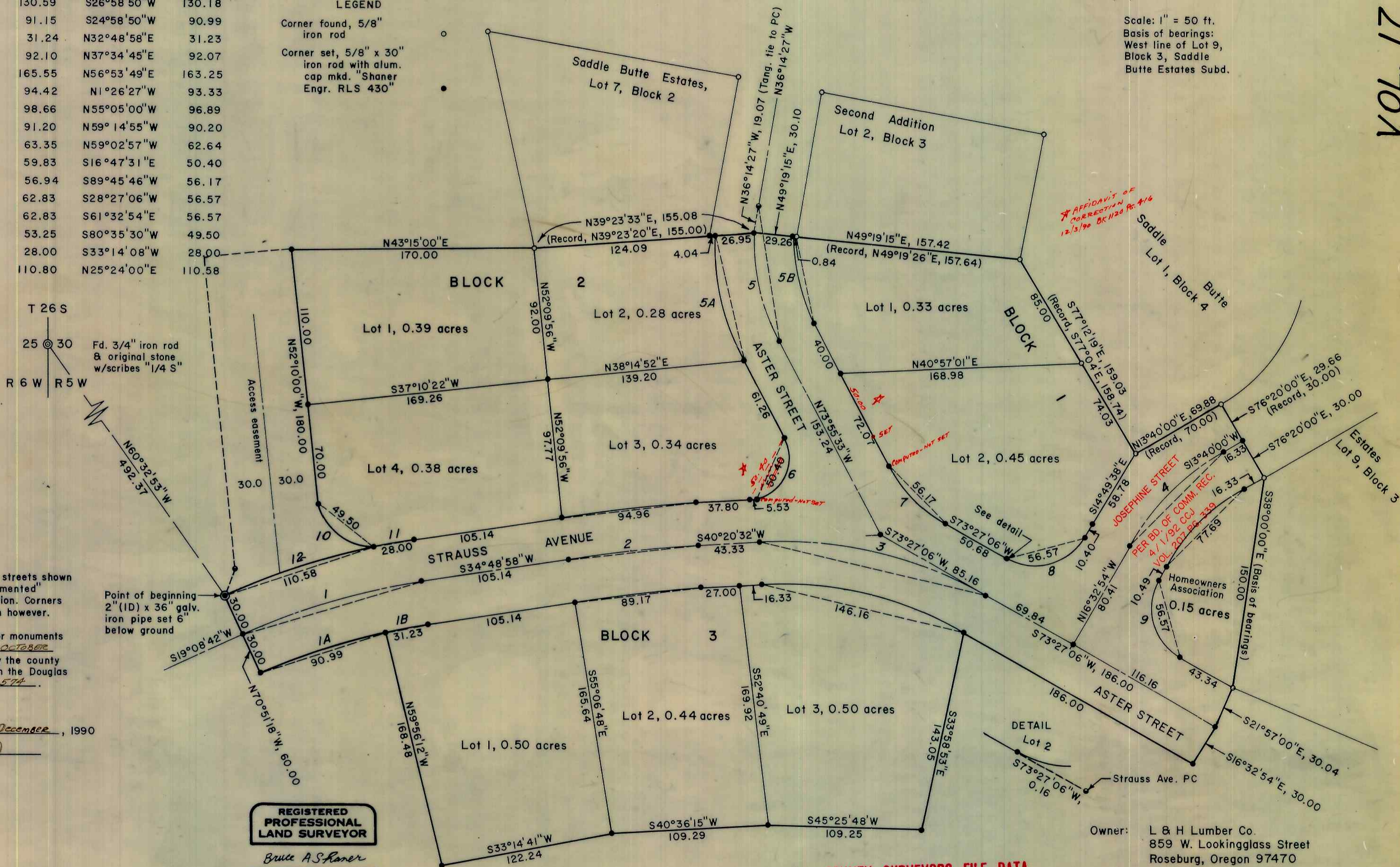
CENTERLINE CURVE DATA				LONG CHORD	
No.	Δ	Radius	Length	Bearing	Distance
1	15°40'16"	477.46	130.59	S26°58'50"W	130.18
1A	11°40'16"	447.46	91.15	S24°58'50"W	90.99
1B	4°00'00"	447.46	31.24	N32°48'58"E	31.23
2	5°31'34"	954.93	92.10	N37°34'45"E	92.07
3	33°06'34"	286.48	165.55	N56°53'49"E	163.25
4	30°12'54"	179.05	94.42	N1°26'27"W	93.33
5	37°41'06"	150.00	98.66	N55°05'00"W	96.89
5A	29°21'17"	178.00	91.20	N59°14'55"W	90.20
5B	29°45'11"	122.00	63.35	N59°02'57"W	62.64
6	114°16'05"	30.00	59.83	S16°47'31"E	50.40
7	32°37'21"	100.00	56.94	S89°45'46"W	56.17
8	90°00'00"	40.00	62.83	S28°27'06"W	56.57
9	90°00'00"	40.00	62.83	S61°32'54"E	56.57
10	76°27'00"	40.00	53.25	S80°35'30"W	49.50
11	3°09'41"	507.46	28.00	S33°14'08"W	28.00
12	12°30'35"	507.46	110.80	N25°24'00"E	110.58

### LEGEND

- Corner found, 5/8" iron rod
- Corner set, 5/8" x 30" iron rod with alum. cap mkd. "Shaner Engr. RLS 430"



Scale: 1" = 50 ft.  
Basis of bearings:  
West line of Lot 9,  
Block 3, Saddle  
Butte Estates Subd.



### Post Monumentation Note:

All monuments on subdivision streets shown as "corner set" will be "post monumented" immediately after street construction. Corners of Lot 1, Block 2 are set as shown however.

Post monumentation of interior monuments was completed the 25<sup>th</sup> day of OCTOBER 1990 as indicated and certified by the county surveyor on a plat copy filed with the Douglas County Clerk, Book 1120 page 574.

Filed this 4<sup>th</sup> day of December, 1990

(By HELEN PYLE, Deputy)  
Douglas County Clerk

REGISTERED  
PROFESSIONAL  
LAND SURVEYOR

*Bruce A. Shaner*

OREGON  
OCT. 4, 1957  
BRUCE A. SHANER  
430

COUNTY SURVEYORS FILE DATA  
DO NOT REMOVE FROM OFFICE

Owner: L & H Lumber Co.  
859 W. Lookingglass Street  
Roseburg, Oregon 97470

Surveyor: Shaner Engineering, Inc.  
P. O. Box 1430  
Roseburg, Oregon 97470