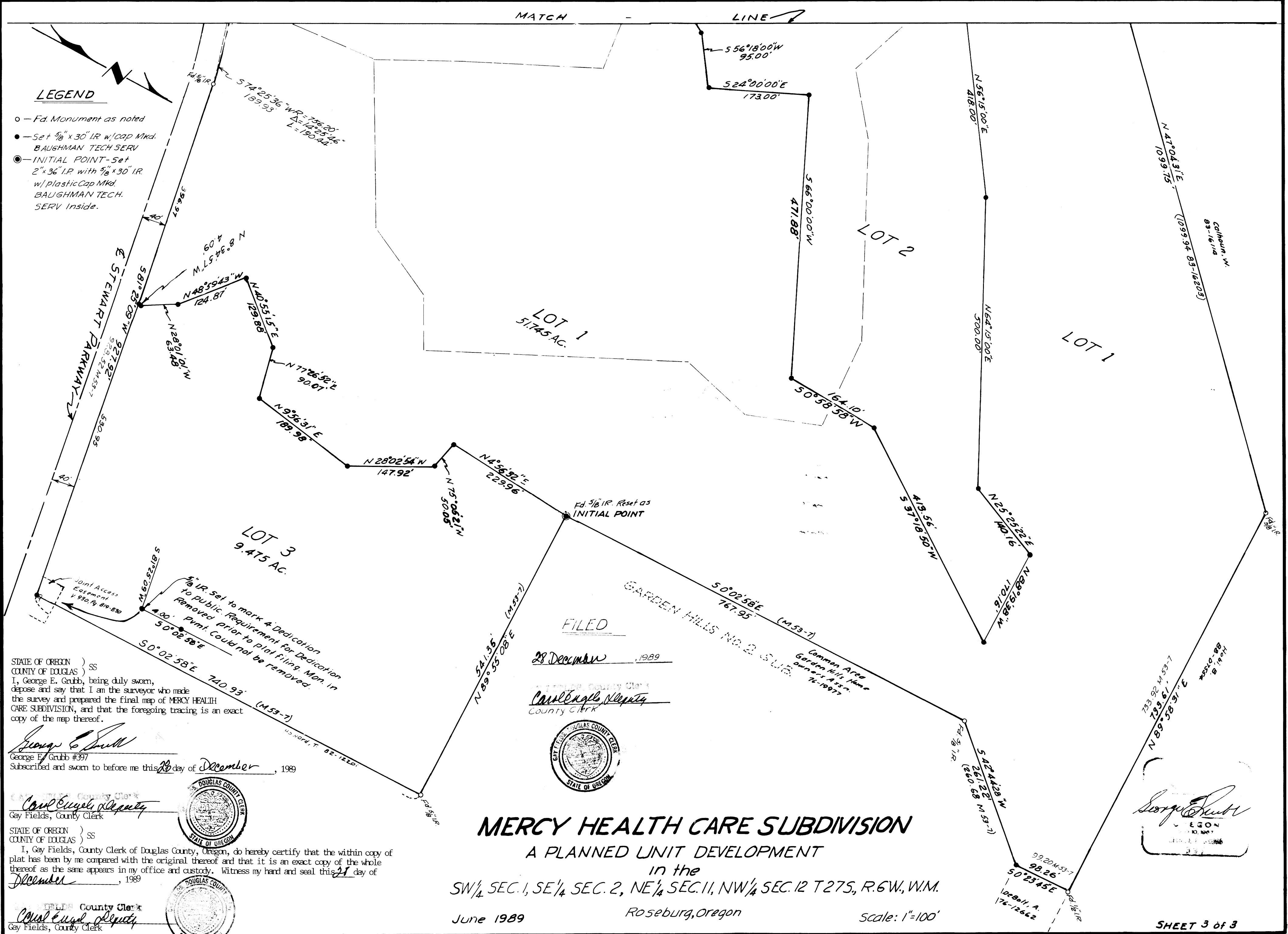


LEGEND

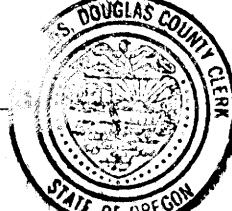
- o - Fd. Monument as noted
- - Set 3/8" x 30" IR w/cap Mkd. BAUGHMAN TECH SERV
- - INITIAL POINT - Set 2" x 36" I.P. with 5/8" x 30" IR w/plastic Cap Mkd. BAUGHMAN TECH. SERV Inside.



STATE OF OREGON) SS
 COUNTY OF DOUGLAS)
 I, George E. Grubb, being duly sworn,
 depose and say that I am the surveyor who made
 the survey and prepared the final map of MERCY HEALTH
 CARE SUBDIVISION, and that the foregoing tracing is an exact
 copy of the map thereof.

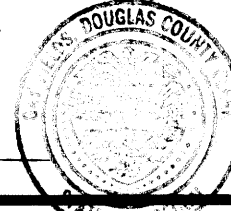
George E. Grubb
 George E. Grubb #397
 Subscribed and sworn to before me this 28 day of December, 1989

County Clerk
Carol Evelyn Deputy
 Gay Fields, County Clerk



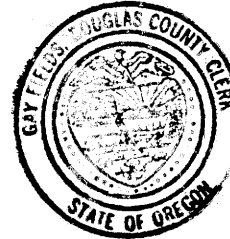
STATE OF OREGON) SS
 COUNTY OF DOUGLAS)
 I, Gay Fields, County Clerk of Douglas County, Oregon, do hereby certify that the within copy of
 plat has been by me compared with the original thereof and that it is an exact copy of the whole
 thereof as the same appears in my office and custody. Witness my hand and seal this 21 day of
December, 1989

County Clerk
Carol Evelyn Deputy
 Gay Fields, County Clerk



FILED
 28 December 1989

County Clerk
Carol Evelyn Deputy
 County Clerk



MERCY HEALTH CARE SUBDIVISION
 A PLANNED UNIT DEVELOPMENT

in the
 SW 1/4 SEC. 1, SE 1/4 SEC. 2, NE 1/4 SEC. 11, NW 1/4 SEC. 12 T27S, R.6W, W.M.

June 1989

Roseburg, Oregon

Scale: 1" = 100'

George E. Grubb
 Surveyor
 1989

SHEET 3 of 3

COUNTY SURVEYORS FILE DATA
 DO NOT REMOVE FROM OFFICE